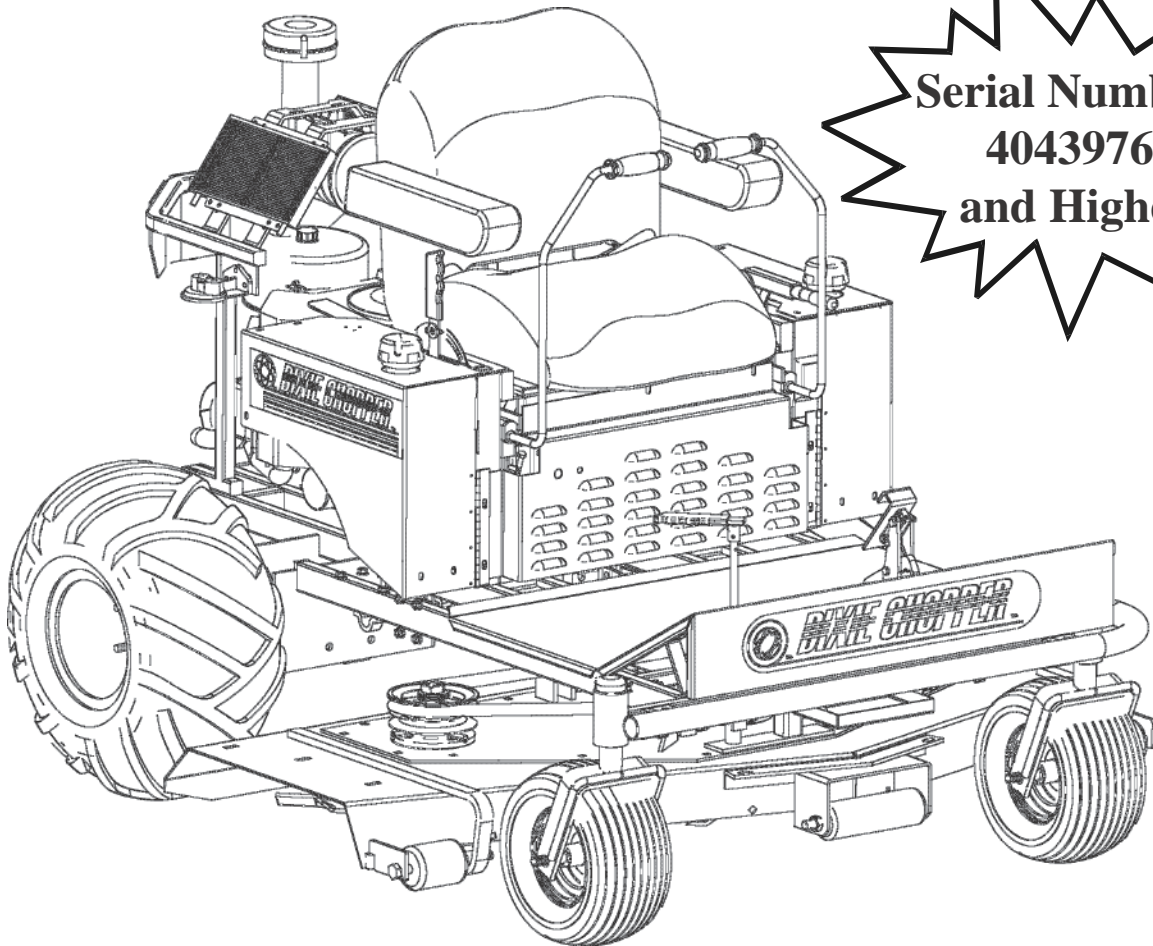


DIXIE CHOPPER

The World's Fastest Lawn Mower



**Serial Numbers
4043976
and Higher**

Model # _____

Engine Model # _____

Serial # _____

Engine Serial # _____

Date Purchased _____

Engine Spec. # _____

**X,XW,SP,XT-60 PARTS MANUAL
REV. 2**

DIXIE CHOPPER

Congratulations on your purchase of a **DIXIE CHOPPER** lawn mower. We believe you have exercised excellent judgement, and are most appreciative of your patronage.

**Your DIXIE CHOPPER Dealer is your #1 SOURCE for
DIXIE CHOPPER parts and service !**

Please call or visit your nearest authorized Dixie Chopper Dealer for additional service information.

AUTHORIZED DEALER

Let us know how you are getting along with your new CHOPPER!
www.dixiechopper.com

Dixie Chopper reserves the right to make changes or add improvements to its products at any time without incurring any obligation to make such changes to products previously manufactured. Neither Dixie Chopper, nor its dealers, accept responsibility for variations which may be evident in the actual specifications of its products and the statements and descriptions contained in this publication.

CONTENTS

Quick Reference Parts	1
Decals	3
Decal Placement	6
Frame	7
Wheels & Tires	11
Foot Pedal	12
Deck Lift System	13
OCDC	14
Deck	15
Hubs & Belts	17
Transmission Frame	18
Transmission & Drive	21
Wheel Motor	23
Hydraulic Hose Diagram	25
Throttle	30
Body	31
Fuel System	37
Brake Assembly	39
Engine - Kohler 20Hp	41
Engine - Kohler 25Hp	42
Engine - Kawasaki 25Hp	43
Engine - Kohler 27Hp & 28Hp	44
Kohler 27Hp & 28Hp Engine Oil Routing	45
Engine - 32Hp, 30Hp, & 27Hp Generac	46
Generac 32Hp Engine Oil Routing	47
Electrical Diagram - Kohler	48
Electrical Diagram - Kawasaki	49
Electrical Diagram - Kohler EFI	50
Electrical Diagram - Generac	51

DIXIE CHOPPER

X, XK, XG MODEL QUICK REFERENCE PARTS

MODEL	X2001	X2503	XK2503	XG2703
Engine	Kohler 20Hp	Kohler 23Hp	Kaw. 25Hp	Generac 27 Hp
Deck	60"	60"	60"	60"
Rear Tires	400114	400114	400114	400114
Rear Rims	400118	400118	400118	400118
Front Tires	97165	97165	97165	97165
Front Rims	10239	10239	10239	10239

Belts				
Engine-Transmission	9907B41	9907B41	9907B41	9907B41
Engine-Deck	9907B85	9907B85	9907B85	9907B85
Deck	9907B130	9907B130	9907B130	9907B130

Filters				
Fuel Filter	24-050-02	97392	49019-7001	97392
Kohler Air Filter	47-083-03			
Kohler Foam Filter	24-083-02			
Nelson Air Filter Primary		25-083-01		
Nelson Air Filter Secondary		25-083-04		
Kaw. Foam Air Filter			11013-7009	
Kaw. Air Filter			11013-7024	
Donaldson Air Filter (Primary)				0E3557
Donaldson Air Filter (Secondary)				0E3656
Amsoil Oil Filter				
Zinga-Hydro Filter	68140	68140	68140	68140

Blades				
Standard	30227-60H	30227-60H	30227-60H	30227-60H
Heavy-Duty	30227-60N	30227-60N	30227-60N	30227-60N

DIXIE CHOPPER

XWF, XT, SP

QUICK REFERENCE PARTS

MODEL	XWF2700	SP2800EFI	XT3000	XT3200	
Engine	Kohler 27Hp	Kohler 28Hp	Generac 30 Hp	Generac 32Hp	
Deck	60"	60"	60"	60"	
Rear Tires	97200	97200	97200	97200	
Rear Rims	400014	400014	400014	400014	
Front Tires	97165	400070	400070	400070	
Front Rims	10239	400071	400071	400071	
Belts					
Engine-Transmission	9907B41	9907B41	9907B41	9907B41	
Engine-Deck	9907B85	9907B85	9907B85	9907B85	
Deck	9907B130	9907B130	9907B130	9907B130	
Filters					
Fuel Filter	97392	97392	97392	97392	
Nelson Air Filter Primary	25-083-01	25-083-01			
Nelson Air Filter Secondary	25-083-04	25-083-04			
Donaldson Air Filter (Primary)			0E3557	0E3557	
Donaldson Air Filter (Secondary)			0E3656	0E3656	
Amsoil Oil Filter	60119	60119	60119	60119	
Zinga-Hydro Filter (2)	68140	68140	68140	68140	
Blades					
Standard	30227-60H	30227-60H	30227-60H	30227-60H	
Heavy-Duty	30227-60N	30227-60N	30227-60N	30227-60N	
Various Parts ALL MODELS					
Fiber Washer	W-101				
Spindle Bearing	30218				
Deck Roller (Ctr)	30240-O				
Choke Control	20248				
Throttle Cable	68249				
Brake Cable	65246 (Left)				65247 (Right)
Brake Cable (Single)	89991210001				
Parking Brake Band	65244				
Fuel Cap	600035				
Control Lever Grip	20257				

DIXIE CHOPPER

DECALS



1



2



3



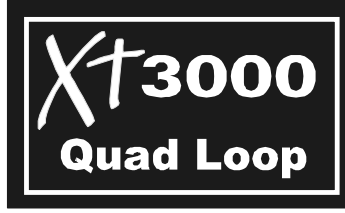
4



5



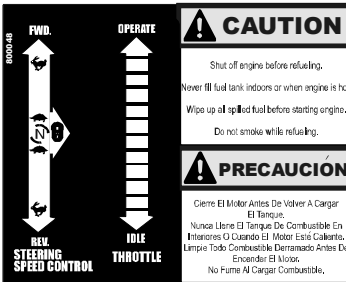
6



7



8



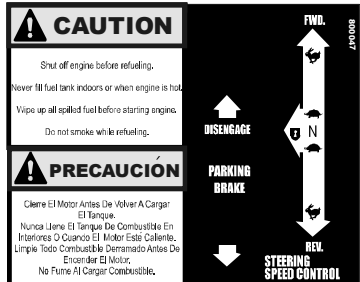
TO AVOID INJURY, READ OWNER'S MANUAL

NEVER MOW SIDE HILL OVER 15°
NEVER MOW UP HILL OVER 10°
NEVER MOW SLOPE OVER 15°

PELIGRO LEA EL MANUAL DEL USUARIO PARA EVITAR LESIONES.

NOTICE
 For best performance, minimum engine RPM should be 3750 under no load. Continuous operation below 3500 RPM will result in engine over-heating and an unacceptable quality cut. RPM may be reduced for trimming and/or other light load duties. If the engine cannot maintain 3500 RPM, under a load, operator should reduce ground speed, consult manual, and/or contact your dealer for any questions or necessary adjustments.

13



TO AVOID INJURY, READ OWNER'S MANUAL

NEVER MOW SIDE HILL OVER 15°
NEVER MOW UP HILL OVER 10°
NEVER MOW SLOPE OVER 15°

PELIGRO LEA EL MANUAL DEL USUARIO PARA EVITAR LESIONES.

NOTICE
 WARRANTY TO BE USED ONLY TO COVER CORRECTION OF MANUFACTURING DEFECTS. IT WILL NOT BE USED TO COVER LACK OF MAINTENANCE, OPERATOR MIS-USE, NORMAL WEAR, ACCIDENTS, CUSTOMER DIS-SATISFACTION OR TRANSPORTATION CHARGES TO AND FROM THE SERVICING DEALER.

14



9



10



11



TO AVOID INJURY, READ OWNER'S MANUAL

NEVER MOW SIDE HILL OVER 15°
NEVER MOW UP HILL OVER 10°
NEVER MOW SLOPE OVER 15°

PELIGRO LEA EL MANUAL DEL USUARIO PARA EVITAR LESIONES.

NOTICE
 For best performance, minimum engine RPM should be 3750 under no load. Continuous operation below 3500 RPM will result in engine over-heating and an unacceptable quality cut. RPM may be reduced for trimming and/or other light load duties. If the engine cannot maintain 3500 RPM, under a load, operator should reduce ground speed, consult manual, and/or contact your dealer for any questions or necessary adjustments.

15



12



16

REF #	PART #	DESCRIPTION	QTY.
1	65415	X2001 Front Panel	1
2	97068	X2503 Front Panel	1
3	800027	XK2503 Front Panel	1
4	800031	XWF2700 Front Panel	1
5	800055	XG2703 Front Panel	1
6	800044	SP2800 Front Panel	1
7	800024	XT3000 Front Panel	1
8	800053	XT3200 Front Panel	1

REF #	PART #	DESCRIPTION	QTY.
9	65413	Patent Pending (T-Box)	1
10	800014	Ignition	1
11	800015	Choke	1
12	97514	Horn Warning	1
13	800048	Decal - Right Fender	1
14	800047	Decal - Left Fender	1
15	800050	Decal - Right Fender Combo F/Cooler	1
16	800010	Flex-Deck Ready Decal	1

DIXIE CHOPPER

DECALS (CONT'D)



17



18



19



20



22

MODEL	ENG-TRANS	ENG-DECK	DECK SPINDLE	CLUTCH-DRIVE
42"	B-41	B-81	A-89	
50"	B-41	B-84	B-112	
60"	B-41	B-85	B-130	
60" SERVO	B-41	B-85	B-130	
72" SERVO	B-41	B-85	B-162	
CITY	B-41	B-81	B-162	
TWIN	B-40	B-82	B-162	B-38

800042

23

CAUTION: VTC OIL ONLY!
 If it becomes necessary to add oil and VTC oil is not available, add 20W40 or 20W50 motor oil. DO NOT add automatic transmission fluid, Hytran, or multi-vis oils with less than 20W40 viscosity. Oil change intervals should be every 1000 hours or immediately if moisture is present.
CHECK FLUID LEVEL EVERY 50 HOURS

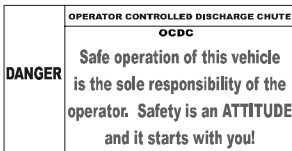
21



24



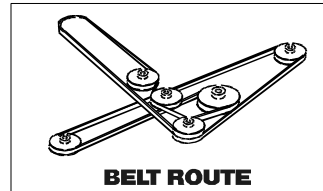
25



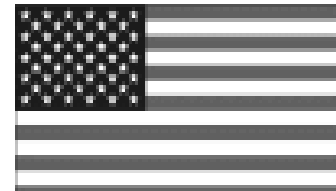
26



27



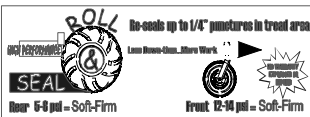
28



29



32



30



31

REF #	PART #	DESCRIPTION	QTY.
17	264000200210	VTC	1
18	30586	Tractor Buster (Rear Left Fender)	1
19	30590	USA Decal (Rear Right Fender)	1
20	30229	Deck Danger Decal	2
21	97013	VTC Only (Oil Tank)	1
22	65409	60 Inch Cut	2
23	800042	Belt Information	1
24	800018	Docu-Tube Decal	1

REF #	PART #	DESCRIPTION	QTY.
25	800008	Hp + 1 Decal	1
26	97072	OCDC Safety Decal	1
27	800017	Big Wheel Flatlander Decal	1
28	65422	Belt Route Decal	1
29	800020	American Flag (Side Left Fender)	1
30	800019	Roll & Seal Decal	1
31	800022	Xtreme Mowchine	1
32	800043	Throttle Start Decal F/XT3000, XT3200	1

DIXIE CHOPPER

DECALS (CONT'D)



33



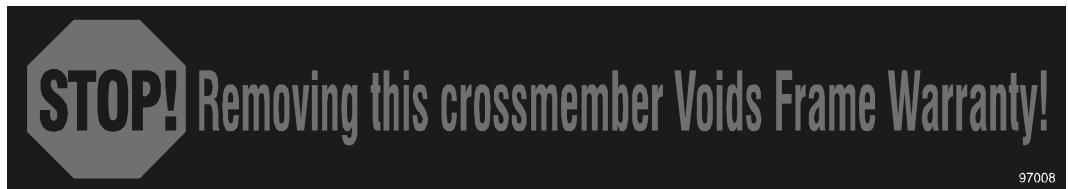
34



37



35



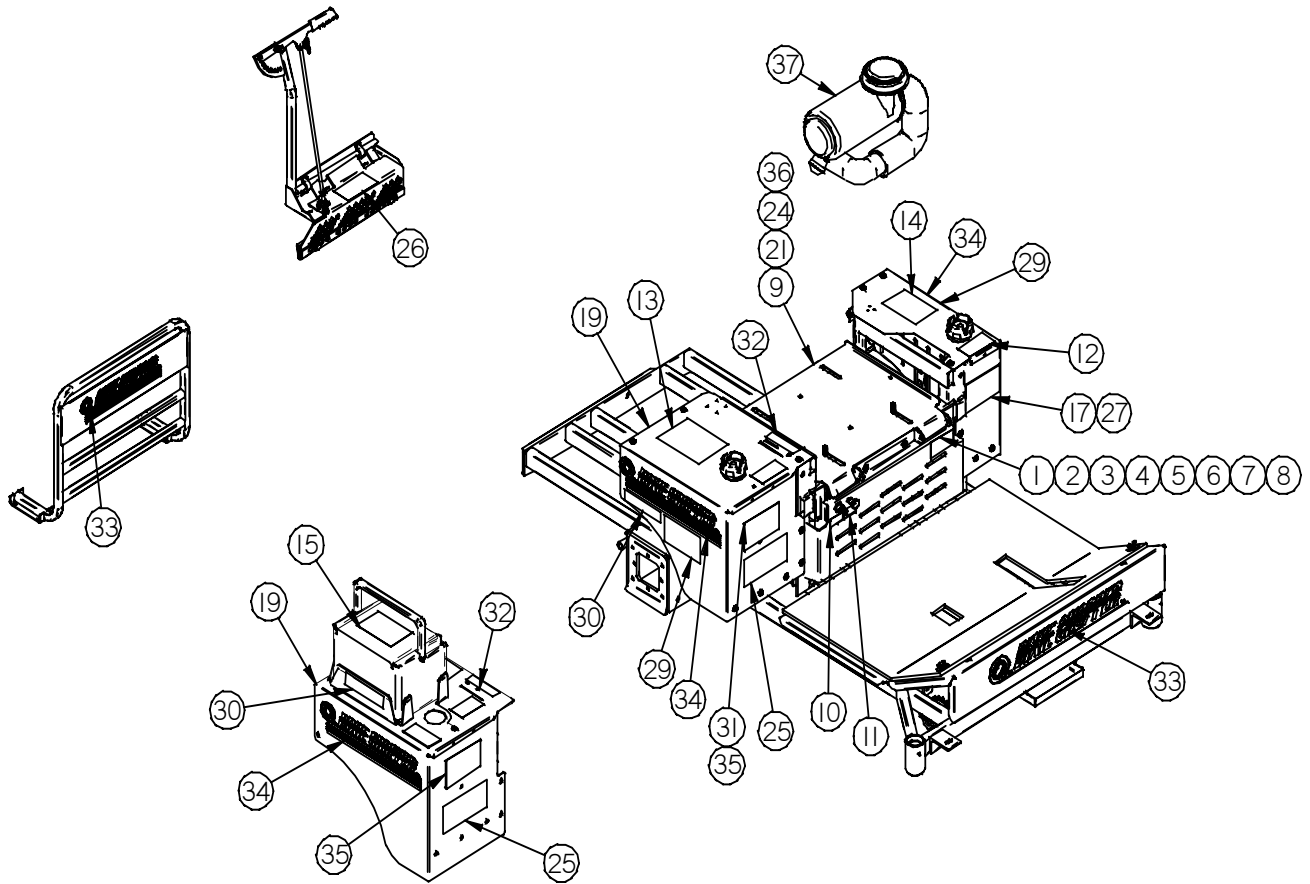
97008

36

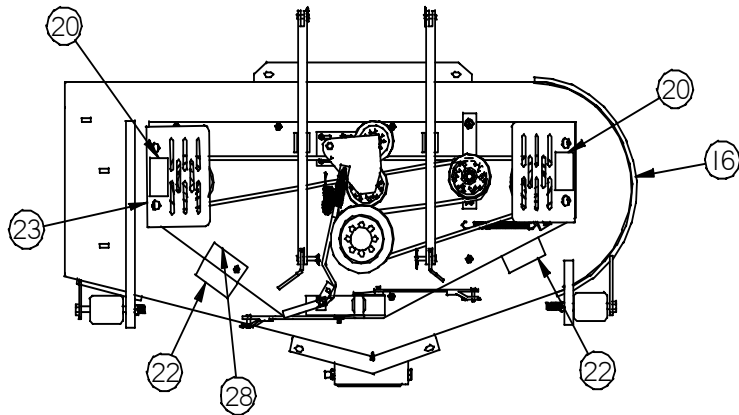
REF #	PART #	DESCRIPTION	QTY.
33	800033	Floor Pan Decal F/ XT, SP	2
	30573	Floor Pan Decal F/ All other	2
34	800032	Fender Decal F/ XT, SP	2
	30571	Fender Decal F/ All other	2
35	800046	Supreme Mowchine Decal	2
36	97008	Cross Member Decal	1
37	800059	Dixie Power - Torque Decal (XG2703, XT3000, XT3200 Only)	1

DIXIE CHOPPER

DECAL PLACEMENT



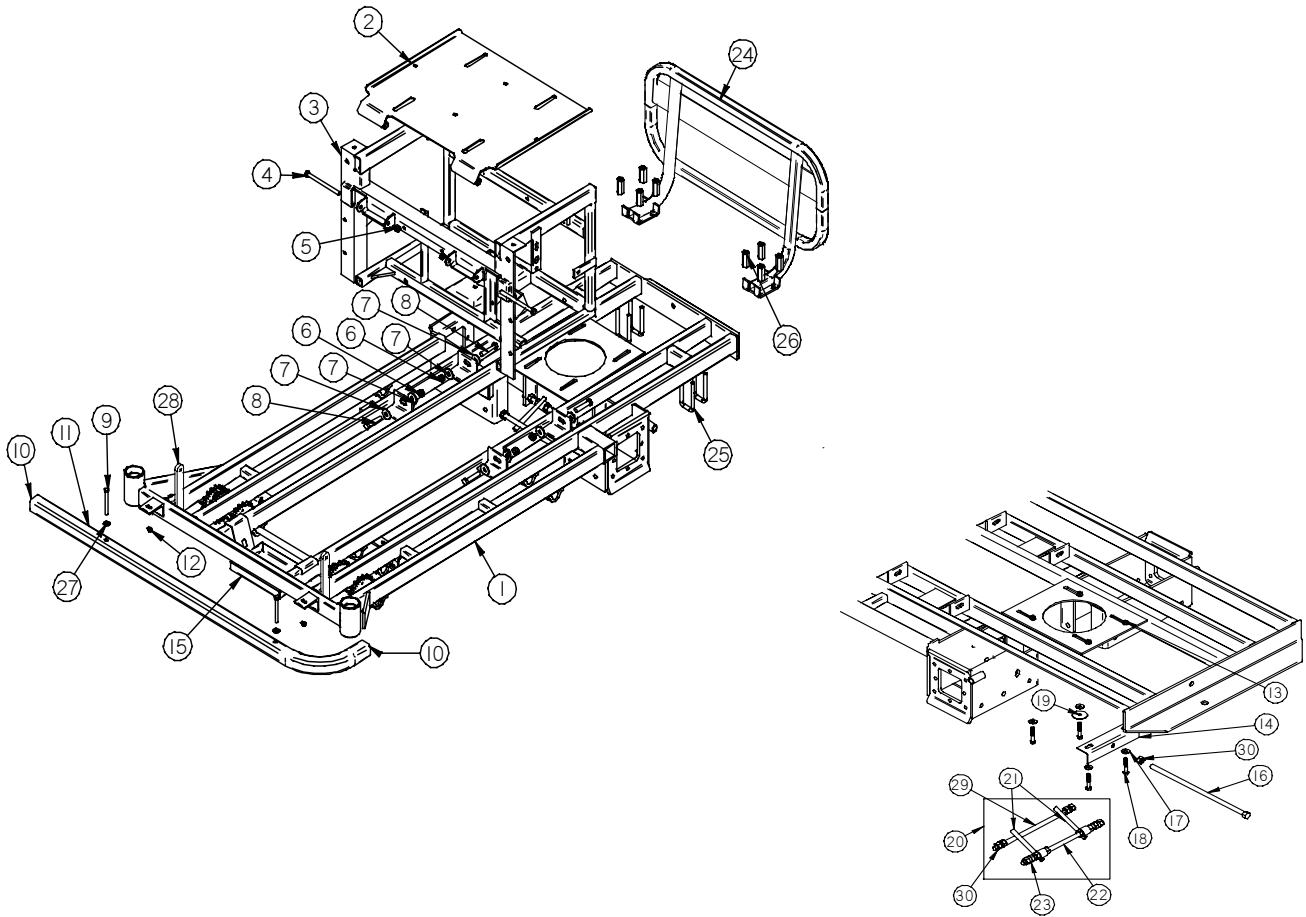
Note:
Decal Placement For
XT Right Fender



DIXIE CHOPPER

X2001, XK2503, X2503, XG2703

FRAME



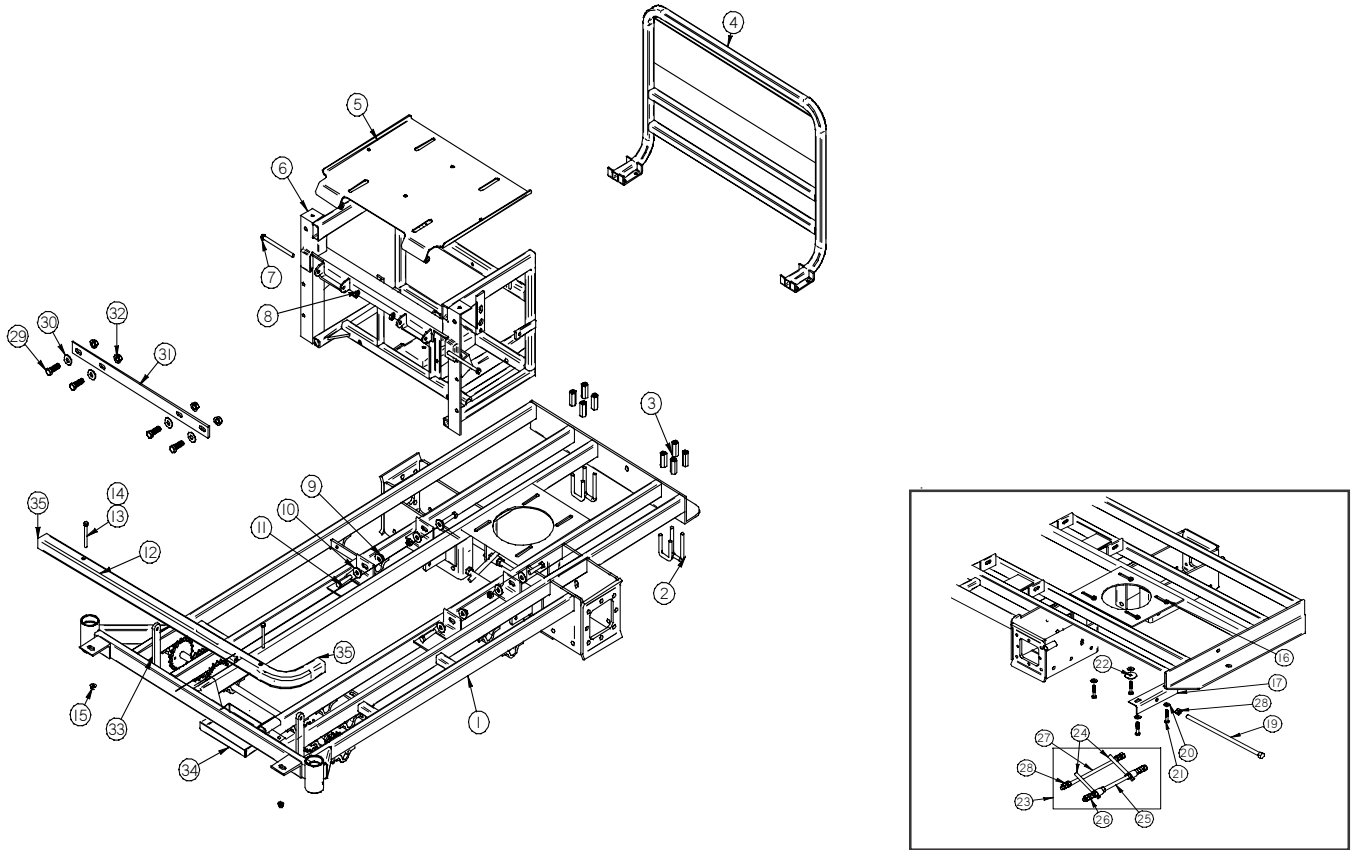
REF #	PART #	DESCRIPTION	QTY.
1	100025	Weldment - 50/60 Frame	1
2	400026	Weldment - Low Ride Seat Pan w/ Hinge	1
3	100007	Weldment - Low Ride Transmission Frame	1
4	B-229	3/8"-16 x 5" Bolt	2
5	N-107	3/8"-16 Nyloc Nut	2
6	N-135	7/16"-20 Nyloc Nut	4
7	W-168	7/16" Hardened Flat Washer	8
8	B-199	7/16"-20 x 2" Bolt	4
9	B-179	3/8"-16x2 1/2" Bolt	2
10	97169	Plastic Cap	2
11	10100-ST 67045-60S	Bumper - Square Bumper - 60" Solid (Optional)	1
12	N-108	3/8"-16 Whiz Flange Nut	2
13	N-103-W	5/16"-18 Whiz Flange Nut	4
14	72216	Pull Stop Weldment	1

REF #	PART #	DESCRIPTION	QTY.
15	400065	Tray - Standard Battery Box	1
	B-190	3/8"-16x1 1/2" Carriage Bolt	2
	N-108	3/8"-16 Whiz Flange Nut	2
16	B-280	1/2"-13x14" Engine Adjustment Bolt	1
17	W-113	5/16" Standard Flat Washer	4
18	B-156	5/16"-18x2" Bolt	4
19	W-107	Shark-Tooth Belleville Washer	1
20	72220	Belt Guide Assembly (Include 21,22,23)	
21	72217	Belt Guide Weldment	2
22	72222	All Thread	1
23	N-110	1/2"-13 Nut	6
24	400047	25Hp Kawasaki Crash Guard (XK2503)	1
	400074	23Hp Kohler Crash Guard (X2503, XG2703)	1
25	B-204	3/8"-16 U-Bolt	4
26	N-160	3/8"-16 Coupling Nut	8
27	W-160	10MM Flat Washer	2
28	400008	Mount - Floor Pan Hinge Frame	2
29	72222	All Thread	1
30	N-110	1/2"-13 Nut	7

DIXIE CHOPPER

XWF2700, SP2800EFI

FRAME

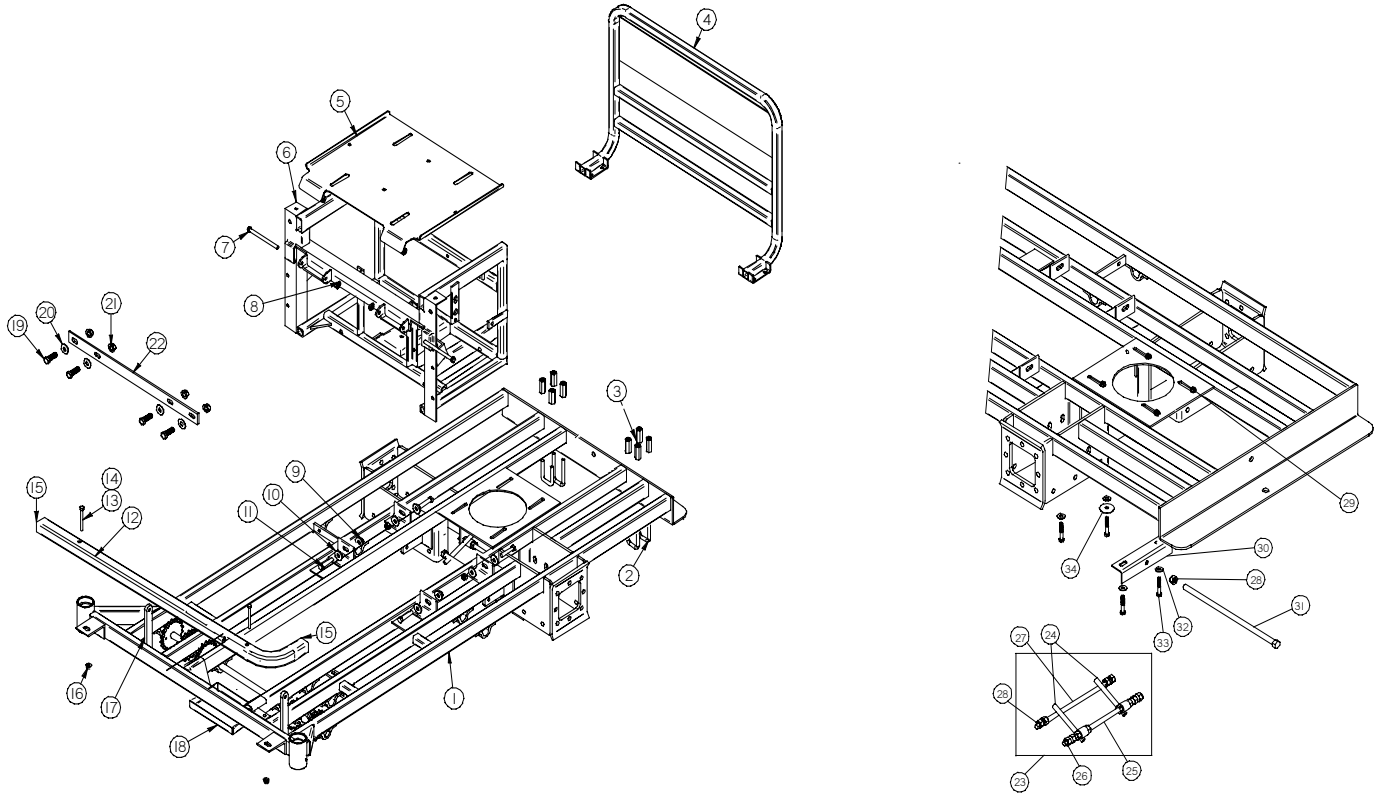


REF #	PART #	DESCRIPTION	QTY.
1	100018	Weldment - 6 Rail 60" Frame	1
2	B-204	3/8"-16 U-Bolt	4
3	N-160	3/8"-16 Coupling Nut	8
4	400027	H style Rear Guard	1
5	400026	Weldment - Low Ride Seat Pan w/ Hinge	1
6	100007	Weldment - Low Ride Transmission Frame	1
7	B-229	3/8"-16 x 5" Bolt	2
8	N-107	3/8"-16 Nyloc Nut	2
9	N-135	7/16"-20 Nyloc Nut	4
10	W-168	7/16" Standard Flat Washer	8
11	B-199	7/16"-20 x 2" Bolt	4
12	10100-ST	Bumper - XW/XF	1
13	W-160	10mm Flat Washer	2
14	B-179	3/8 - 16 X 2 1/2	2
15	N-108	3/8"-16 Whiz Flange Nut	2
16	N-103-W	5/16"-18 Whiz Flange Nut	4
17	72216	Pull Stop Weldment	1

REF #	PART #	DESCRIPTION	QTY.
19	B-280	1/2"-13x14" Engine Adjustment Bolt	1
20	W-113	5/16" Standard Flat Washer	4
21	B-156	5/16"-18 x 2" Bolt	4
22	W-107	Shark-Tooth Belleville Washer	1
23	72220	Belt Guide Assembly (Include 24,25,26)	
24	72217	Belt Guide Weldment	2
25	72222	All Thread	1
26	N-110	Nut 1/2"-13	6
27	72222	All Thread	1
28	N-110	Nut 1/2"-13	7
29	B-123	1/2"-13x1 1/2" Bolt	4
30	W-109	1/2" Flat Washer	4
31	97124	60" Crossmember	1
32	N-157	1/2"-13 Whiz Flange Nut	4
33	400008	Mount - Floor Pan Hinge Frame	2
34	400065	Standard Bolt-in Battery Box	1
	B-190	3/8"-16x1 1/2" Carriage Bolt	2
	N-108	3/8"-16 Whiz Flange Nut	2
35	97169	Plastic Plug	2

DIXIE CHOPPER

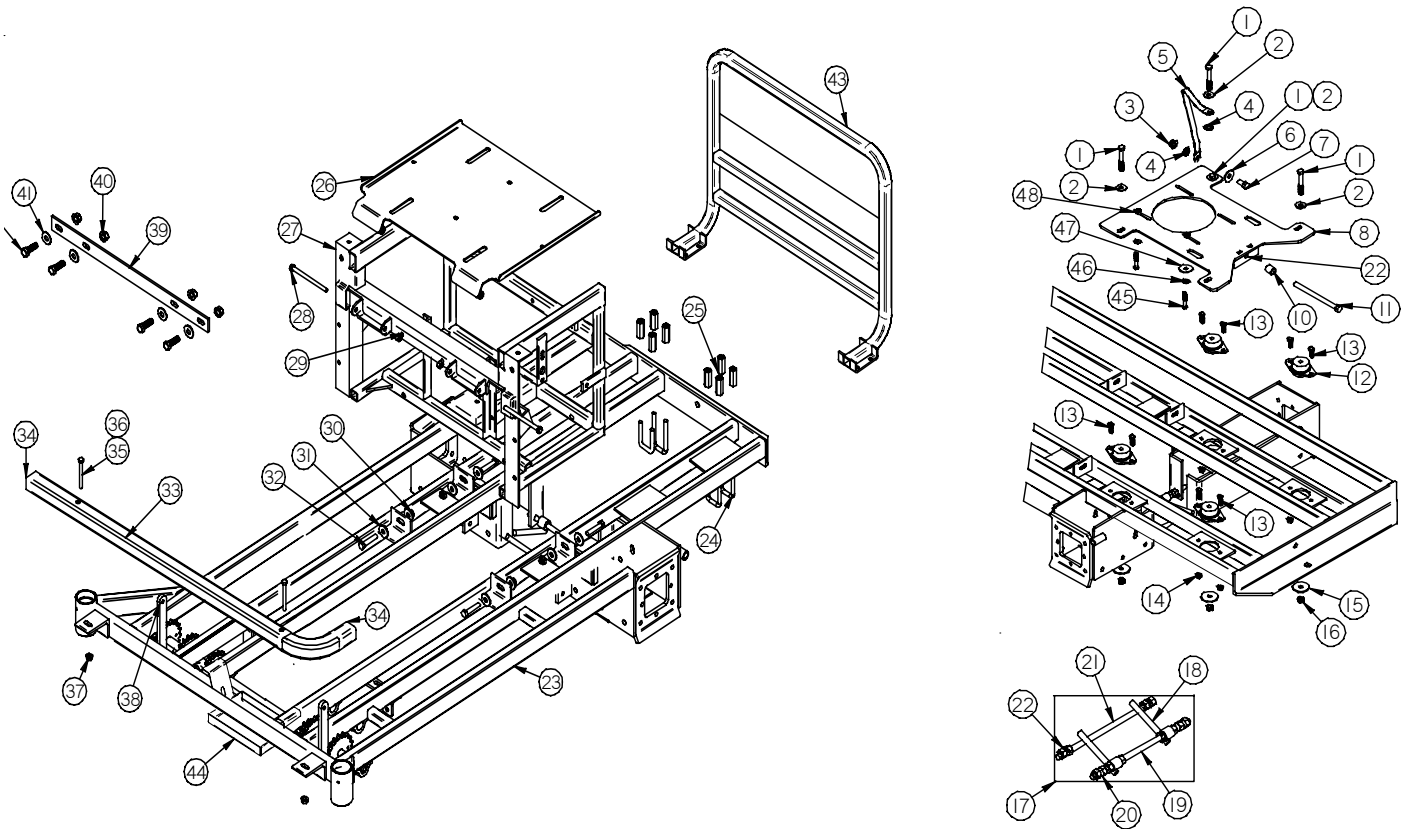
XT3000, XT3200 FRAME SERIAL # 4045778 & HIGHER



REF #	PART #	DESCRIPTION	QTY.	REF #	PART #	DESCRIPTION	QTY.
1	100069	Frame - Generac 60"	1	18	97145	Diesel Battery Box	1
2	B-204	3/8"-16 U-Bolts	4		B-190	3/8"-16x1 1/2" Carriage Bolt	2
3	N-160	3/8"-16 Coupling Nut	8		N-108	3/8"-16 Whiz Flange Nut	2
4	400111	Crash Guard	1	19	B-123	1/2"-13x1 1/2" Bolt	4
5	400026	Weldment - Low Ride Seat Pan w/Hinge	1	20	W-109	1/2" Flat Washer	4
6	100007	Weldment - Low Ride Transmission Frame	1	21	N-157	1/2"-13 Whiz Flange Nut	4
7	B-229	3/8"-16x5" Bolt	2	22	97124	60" Crossmember	1
8	N-107	3/8"-16 Nyloc Nut	2	23	72220	Belt Guide Assembly Incl. #24-#26	1
9	N-135	7/16"-20 Nyloc Nut	4	24	72217	Belt Guide Weldment	2
10	W-168	7/16" Standard Flat Washer	8	25	72222	All Thread	1
11	B-199	7/16"-20x2" Bolt	4	26	N-110	1/2"-13 Nut	6
12	10100-ST 67045-60S	Bumper Solid Bumper (Optional)	1	27	72222	All Thread	1
13	W-160	10mm Flat Washer	2	28	N-110	1/2"-13 Nut	7
14	B-179	3/8"-16x2 1/2" Bolt	2	29	N-103-W	5/16"-18 Whiz Flange Nut	4
15	97169	Plastic Plug	2	30	72216	Pull Stop Weldment	1
16	N-108	3/8"-16 Whiz Flange Nut	2	31	B-280	1/2"-13x14" Engine Adjustment Bolt	1
17	400008	Mount - Floor Pan Hinge Frame	2	32	W-113	5/16" Standard Flat Washer	4
				33	B-156	5/16"-18x2" Bolt	4
				34	W-107	Shark-Tooth Belleville washer	1

DIXIE CHOPPER

XT3000, XT3200 FRAME

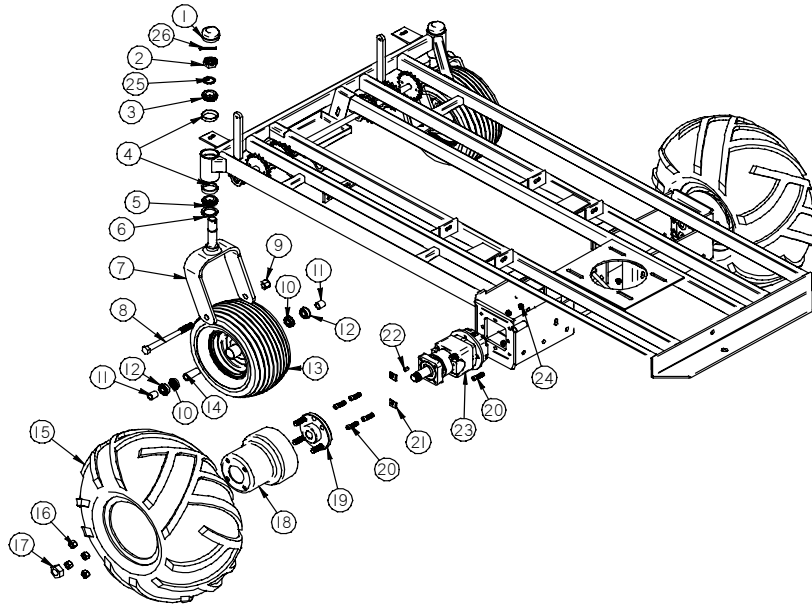


REF #	PART #	DESCRIPTION	QTY.
1	B-227	7/16"-14x3" Bolt	4
2	W-166	7/16" Flat Washer	4
3	N-157	1/2"-13 Whiz Flange Nut	1
4	W-157	1/2" Star Tooth Washer	2
5	97382	Ground Strap	1
6	W-128	1/2" Flat Washer	1
7	B-138	1/2"-13x1" Bolt	1
8	100047	Weldment - Motor Mount Generac Plate w/Tensioning Tab	1
10	10203	Bushing	1
11	B-202	1/2"-13x7" Tap Bolt	1
12	100048	Mount - rubber motor	4
13	B-108	3/8"16x1" Bolt	8
14	N-108	3/8"-16 Whiz Flange Nut	8
15	W-159	7/16" ID x 2" OD Flat Washer	4
16	N-123	7/16"-14 Nyloc Nut	4
17	72220	Belt Guide Assembly (Incl Ref # 18,19,20)	1
18	72217	Belt Guide Weldment	2
19	72222	All Thread	1
20	N-110	1/2"-13 Nut	6
21	72222	All Thread	1
22	N-110	1/2"-13 Nut	7
23	100044	Frame - Generac 60"	1
24	B-204	3/8"-16 U-Bolts	4
25	N-160	3/8"-16 Coupling Nut	8
26	400026	Weldment - Low Ride Seat Pan w/Hinge	1

REF #	PART #	DESCRIPTION	QTY.
27	100007	Weldment - Low Ride Transmission Frame	1
28	B-229	3/8"-16x5" Bolt	2
29	N-107	3/8"-16 Nyloc Nut	2
30	N-135	7/16"-20 Nyloc Nut	4
31	W-168	7/16" Standard Flat Washer	8
32	B-199	7/16"-20x2" Bolt	4
33	10100-ST	Bumper	1
34	97169	Plastic Plug	2
35	W-160	10mm Flat Washer	2
36	B-179	3/8"-16x2 1/2" Bolt	2
37	N-108	3/8"-16 Whiz Flange Nut	2
38	400008	Mount - Floor Pan Hinge Frame	2
39	97124	60" Crossmember	1
40	N-157	1/2"-13 Whiz Flange Nut	4
41	W-109	1/2" Flat Washer	4
42	B-123	1/2"-13x1 1/2" Bolt	4
43	400027	Crash Guard	1
44	97145	Diesel Battery Box	1
	B-190	3/8"-16x1 1/2" Carriage Bolt	2
	N-108	3/8"-16 Whiz Flange Nut	2
45	B-156	5/16"-18x2" Bolt	4
46	W-113	5/16" Standard Washer	4
47	W-107	3/8"ID x 1 5/8" Beveled Washer	1
48	N-103-W	5/16"-18 Whiz Flange Nut	4

DIXIE CHOPPER

WHEELS & TIRES

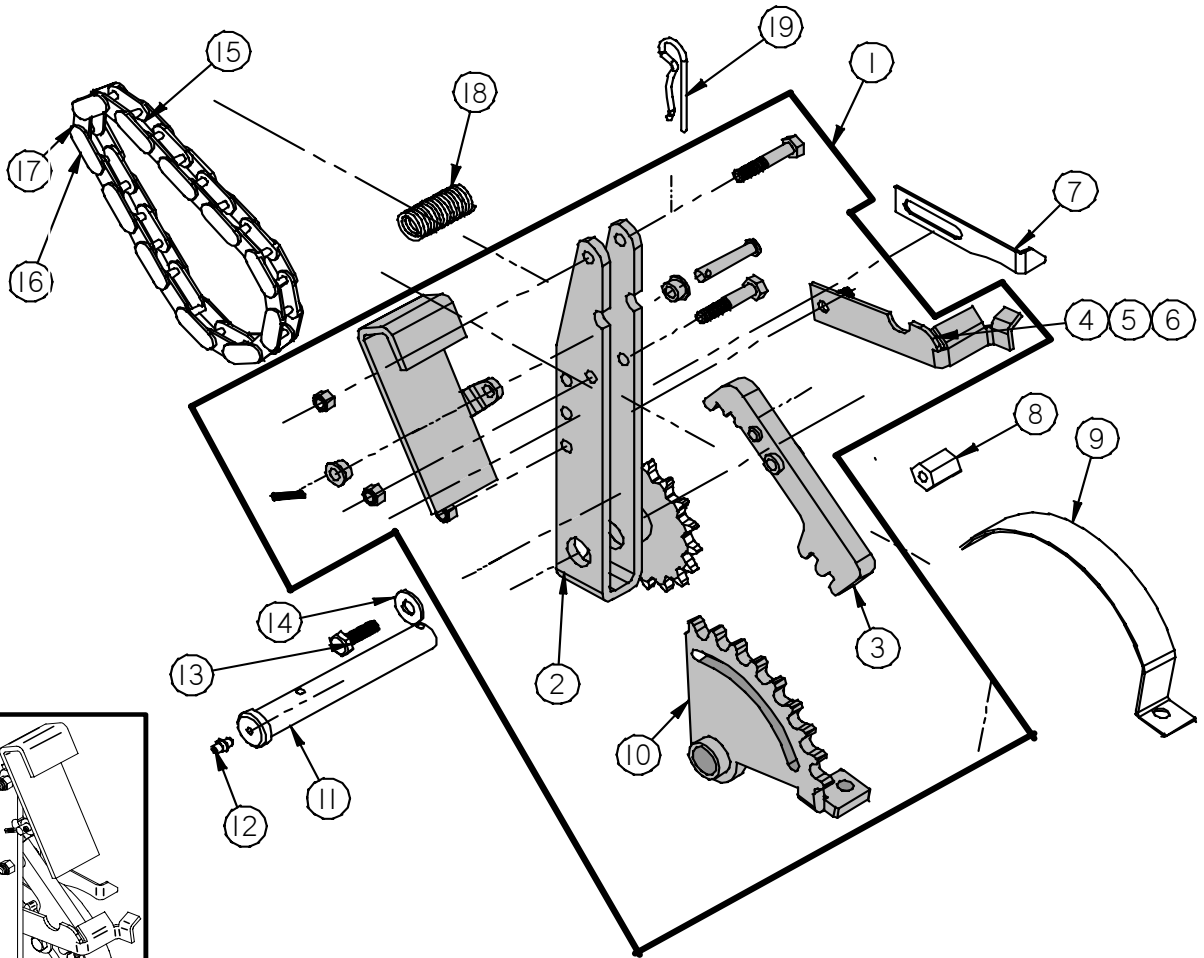


REF #	PART #	DESCRIPTION	QTY.
1	10220	Dust Cap	2
2	N-142	Castle Nut	2
3	10207	Top Bearing	2
4	10206	Outer Bearing Race	4
5	97171	Bottom Bearing	2
6	10208	Seal	2
7	100023	Standard Front Fork (X2001, XK2503, X2503, XWF2700, XG2703)	2
	100019	Heavy Duty Front Fork (SP2800EFI, XT3000, XT3200)	2
8	B-122	Standard - 5/8"-11x7 1/2" Bolt	2
	B-235	Heavy Duty - 5/8"-11x9" Bolt	2
9	N-115	Nut - 5/8"-11 Nyloc	2
10	67205	Inner Front Wheel Bearing	4
11	10203	Outer Front Wheel Spacer (for standard Forks)	4
	400052	Outer Front Wheel Spacer (for Heavy Duty Forks)	4
12	10205	Outer Front Wheel Bearing	4
13	97166	Front Tire Assembly (X2001, X2503, XK2503, XWF2700, XG2703)	2
	97165	Front Tire 13x6.50x6	
	10239	Rim	
	10127-S	Valve Stem	
	400053	Front Tire Assembly (SP2800EFI, XT3000, XT3200)	2
	400070	Front Tire - 15x600-6	
	400071	Rim - 4.5"x6"x3.5" (Only)	
	10127-S	Valve Stem	
14	67204	Inner Front Wheel Spacer	2

REF #	PART #	DESCRIPTION	QTY.
15	400019	Left Tire Assembly (XWF2700, SP2800, XT3000, XT3200)	1
	97200	Turf Boss III Tire	
	400014	Rim	
	10127-S	Valve Stem	
	400020	Right Tire Assembly (XWF2700, SP2800, XT3000, XT3200)	1
	97200	Turf Boss III Tire	
	400014	Rim	
	10127-S	Valve Stem	
	400115	24x10.5x10 All Trail Tire w/Rim (X2001, X25203, XK2503, XG2703)	2
	400114	All Trail Tire (Only)	
	400118	Rim	
	10127-S	Valve Stem	
16	N-113	Lug Nut	8
17	PB339303P	Wheel Motor Axle Nut	
	PW72693	Wheel Motor Axle Nut (XT3200 Only)	
18	67266	Brake Drum (X2001, X2503, XK2503, XG2703) (XWF2700, XT3000, SP2800EFI)	
19	67002	Wheel Flange w/studs	2
20	B-183	Wheel Motor Bolt - 1 1/4" x 3/8" Allen Head	8
	B-123	Wheel Motor Bolt (XT3200 Only) - 1/2"-13x1 1/2"	14
21	W-138	Wheel Motor Square Washer (14 Cu. In. Wheel Motor Only)	4
22	PW72546	1/4" Key (X2001, X2503, XK2503, XWF2700, SP2800EFI, XG2703)	
	300339102	Key (XT3200)	
23	67114	Wheel Motor 14Cu.In. (X2001, X2503, XK2503, XG2703, XWF2700, SP2800)	
	200018	Wheel Motor 18Cu.In. w/Brake (XT3200)	
24	N-127	Wheel Motor Nut - 3/8"-24 Lock Nut	8
	N-146	Wheel Motor Nut (XT3200) - 1/2"-13 Lock Nut Stover	14
25	W-131	1" ID x 1 1/2" OD x 1/8" Thick Washer	2
26	P-108	3/32" x 1 1/2" Cotter Pin	2

DIXIE CHOPPER

FOOT PEDAL ASSEMBLY

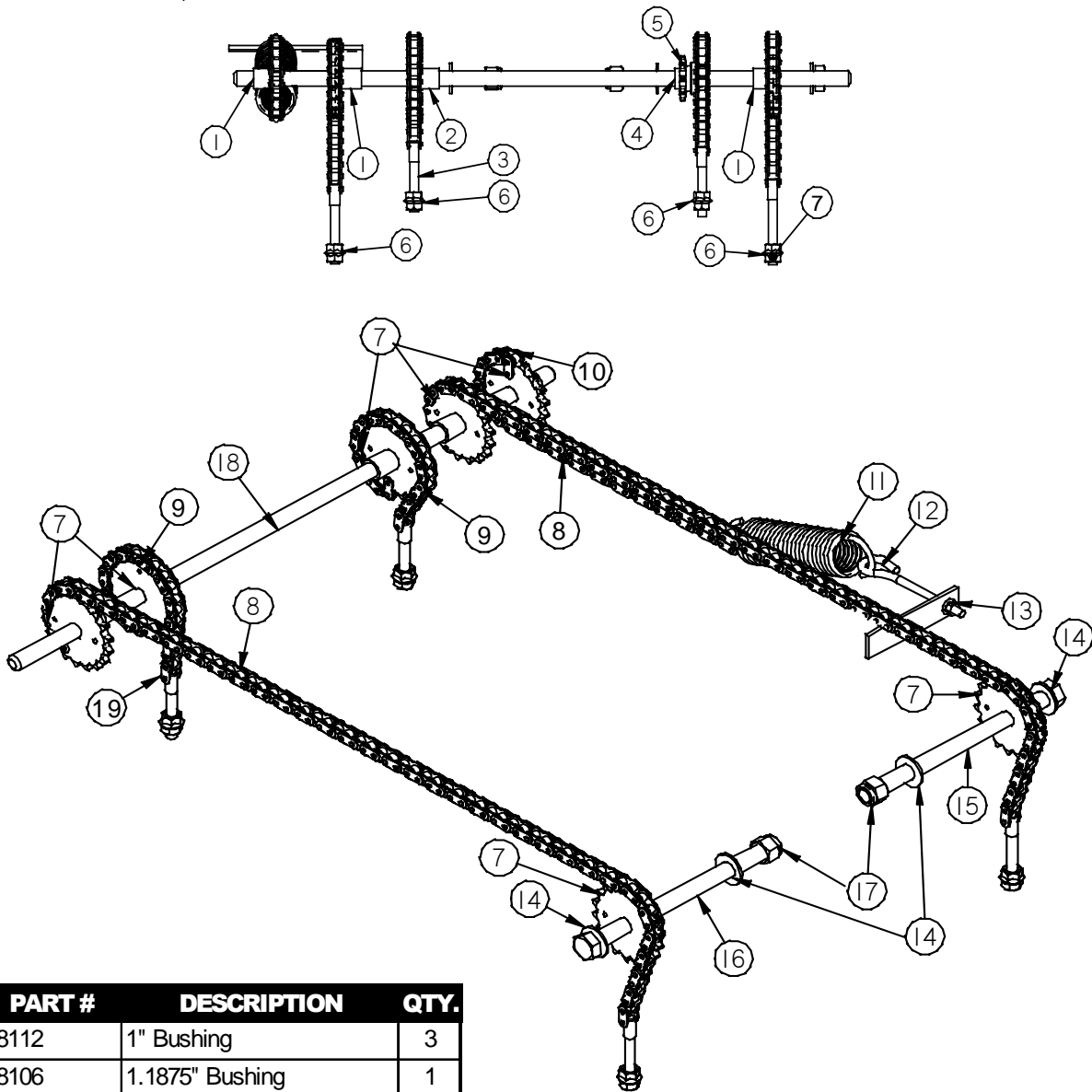


REF #	PART #	DESCRIPTION	QTY.
1	10107-1/2	Kit - Foot Pedal	1
2	10225-2	Weldment - #50 Foot Lift Arm	1
3	10224-1	Pawl	1
4	990735020	Foot Pedal Lock (Incl. #5 - #6)	1
5	W-164	Washer - 5/16" Spring Wafer	
6	N-144	Nut - 5/16"-18 Nylon Jam	
7	300008	Deck Height Pointer	1
8	N-130	Coupling Nut - 5/16"-18x1 3/4"	1
9	300007	Deck Height Indicator	1
10	10226-1	Lift Sprocket	1

REF #	PART #	DESCRIPTION	QTY.
11	10228-1	Pin	1
12	F-100	Grease Fitting	1
13	B-131	Bolt - 5/16"-18x1"	1
14	W-113	Washer - 5/16" Flat	1
15	68219	#50 Chain (Include Ref #16)	1
16	10233	#50 Half Link	
17	10232	#50 Master Link	1
18	20217-25	Spring	1
19	30213	Cotter Pin	1

DIXIE CHOPPER

60" DECK LIFT SYSTEM

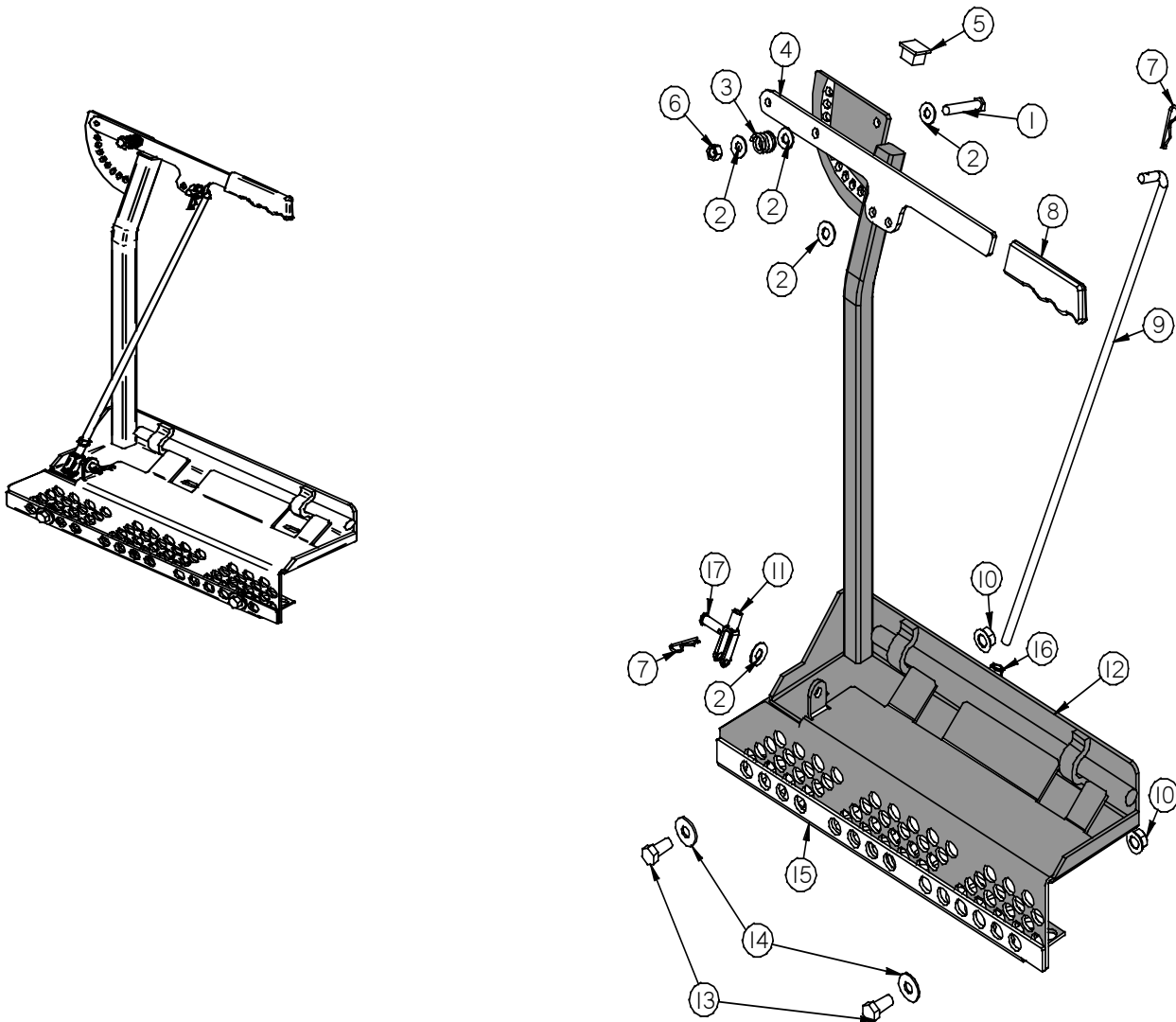


REF #	PART #	DESCRIPTION	QTY.
1	68112	1" Bushing	3
2	68106	1.1875" Bushing	1
3	S-114	1/2"-13 Stud	4
4	68105	1"OD x 3/4"ID x 3/8" Long	1
5	68104	#50 Small Sprocket	1
6	N-157	1/2"-13 Whiz Flange Nut	8
7	68103	Deck Lift Sprocket #50	7
8	990710003	#50 Rear Deck Lift Chain	2
9	68217	#50 Front Deck Lift Chain	2
10	990710002	#50 Return Spring Chain	1
11	97455	200 lb. Return Spring	1
12	B-241	3/8"-16 Eye Bolt	1

REF #	PART #	DESCRIPTION	QTY.
13	N-108	3/8"-16 Whiz Flange Nut	1
14	W-154	3/4" Flat Washer	4
15	B-239	3/4"-10x10" Bolt	1
16	B-238	3/4"-10x8.5" Bolt	1
17	N-158	3/4"-10 Nyloc Nut	2
18	68113	3/4"x31.5" Rod	1
	100064	Rod - 3/4"x30.5" (XT3200)	1
19	10232	#50 Master Link	10

DIXIE CHOPPER

60" OCDC

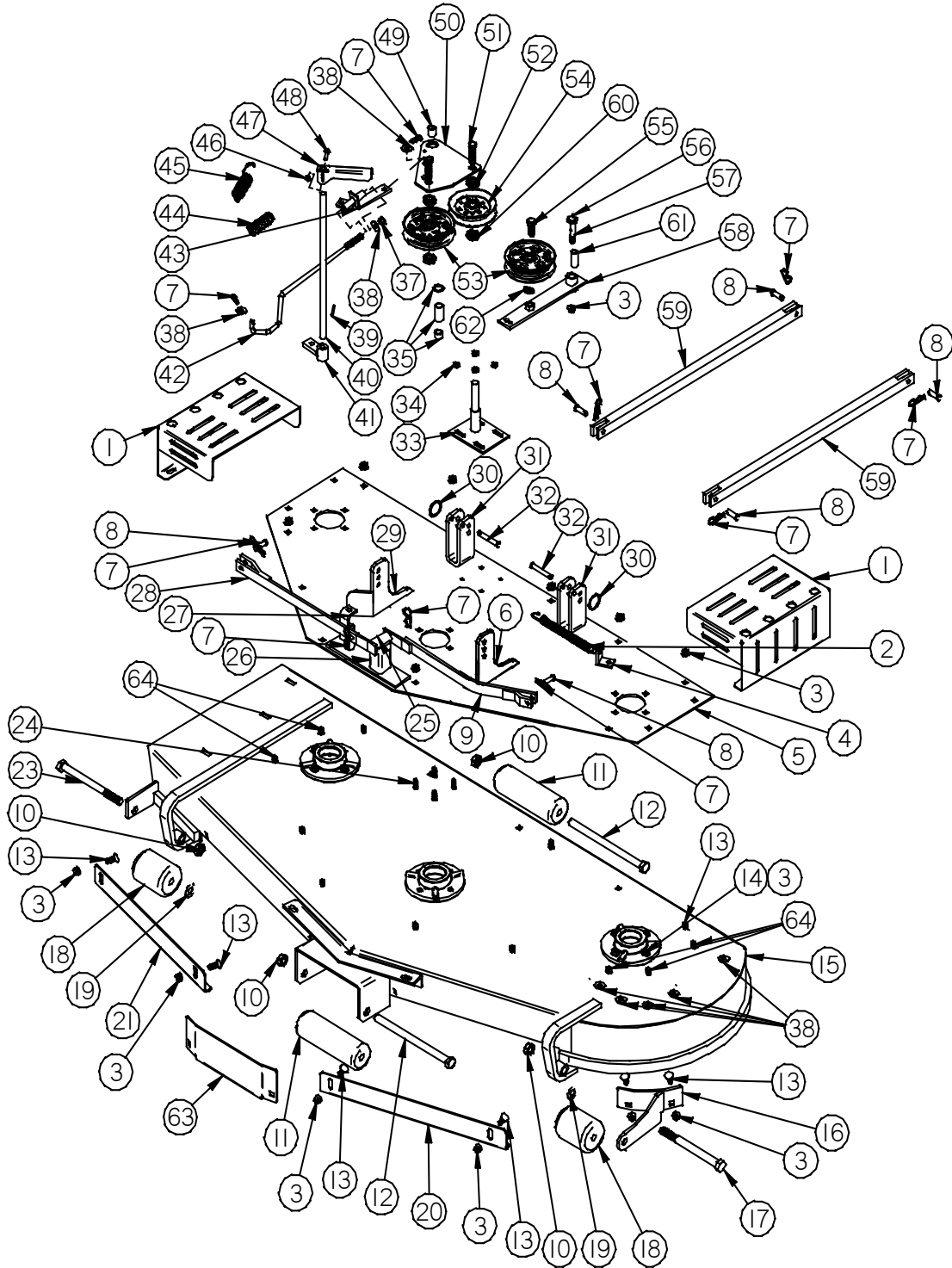


REF #	PART #	DESCRIPTION	QTY.
	68122-60	Assembly - 60" OCDC	
1	B-179	3/8"-16 x2.5" Bolt	1
2	W-104	3/8" Standard Flat Washer	5
3	20252	Spring	1
4	900014	Handle	1
5	68142	1"x1" Plastic Plug	1
6	N-107	3/8"-16 Nyloc Nut	1
7	20224	Clip	2
8	67258	Handle Grip	1

REF #	PART #	DESCRIPTION	QTY.
9	97122	Control Rod (Inc. #9,11,16)	1
10	N-157	1/2"-13 Whiz Flange Nut	2
11	N-155	3/8"-24 Yoke	1
12	68122-60W	OCDC Weldment	
13	B-138	1/2"-13x1" Bolt	2
14	W-109	1/2" Standard Flat Washer	2
15	68136	Lower Screen	1
16	N-150	3/8"-24 Nut	1
17	P-102	3/8"x1.25" Clevis Pin	1

DIXIE CHOPPER

60" DECK



DIXIE CHOPPER

60" DECK

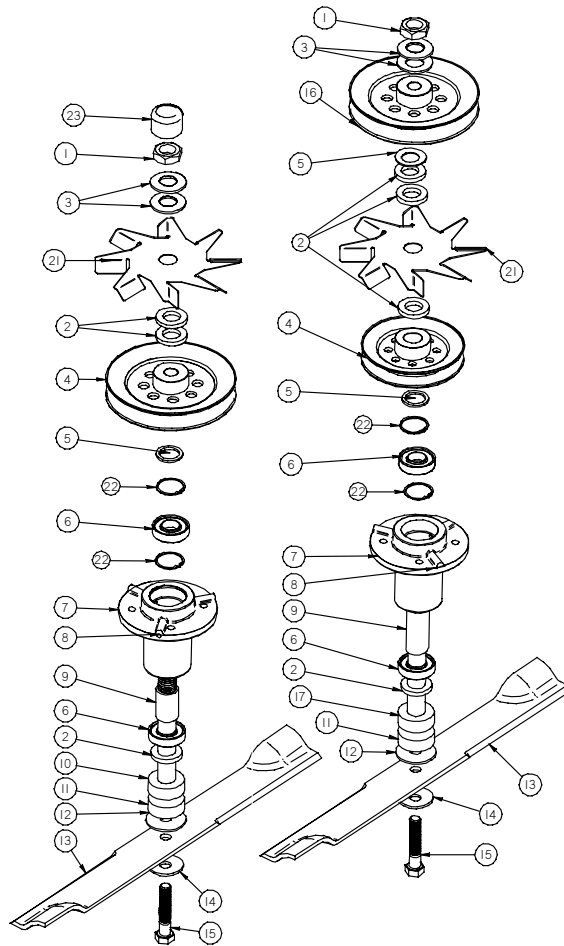
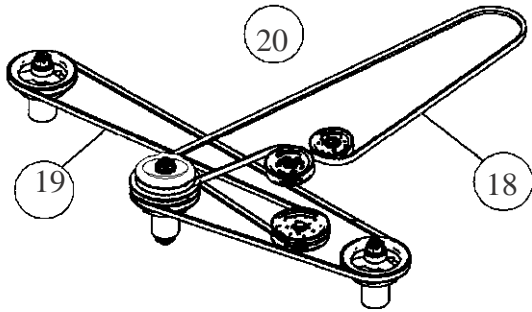
REF #	PART #	DESCRIPTION	QTY.
	300006	60" Deck Assembly	
1	300056	Pulley Guard	2
2	10222	Spring	1
3	N-108	3/8" Whiz Flange Nut	42
4	65308-L	Idler Spring Tab	1
5	300002	60" Top Plate Weldment	1
6	334000130111	Left 3-Hole Tab	1
7	20224	Hairpin Clip	10
8	P-102	3/8"x1.25" Clevis Pin	6
9	30232	Left Scissor Arm	1
10	N-156	5/8"-11 Nyloc Jam Nut	4
11	30240-0	Long Roller	2
12	B-255	5/8"-11x9" Carriage Bolt	2
13	B-110	3/8"-16x3/4" Carriage Bolt	24
14	B-136	3/8"-16x1.25" Carriage Bolt	12
15	300009	60" Deck Weldment (Include #15,16,20,21,63)	1
16	300003	Weldment - Roller Bracket	1
17	B-253	5/8"-11x6" Carriage Bolt	1
18	67240	Short Roller	2
19	W-135	5/8" Flat Washer	2
20	300005	Left 60" Blow Out Baffle	1
21	300004	Right 60" Blow Out Baffle	1
23	B-254	5/8"-11x7" Carriage Bolt	1
24	B-172	1/4"-20x1" Bolt	4
25	F-100	3/16" Drive in Grease Fitting	1
26	67131	Scissor Link Tower Weldment	1
27		Enguaging Tower Weldment	1
28	30231	Right Scissor Arm	1
29	334000130110	Right 3-Hole Tab	1
30	C-104	Ring Clip	2
31	334000130109	2-Hole Tab	2
32	P-103	3/8" x 2" Clevis Pin	2
33	30235	Pivot Stand	1
34	N-102	1/4"-20 Whiz Flange Nut	4

REF #	PART #	DESCRIPTION	QTY.
35	30112	1/8" Shim (if needed)	*
	10203	1" Shim (if needed)	*
	65278	1/2" Shim (if needed)	*
37	N-107	3/8 -16 Nylon Lock Nut	1
38	W-104	3/8" Flat Washer	13
39	P-113	Roll Pin	1
40	30211	Enguaging Shaft	1
41	30210	Cam Weldment	1
	30209-1	Enguaging Rod Assembly (Inc. #37,38,42,43,44)	
42	97343	Enguaging Rod	1
43	30209-B	Connecting Arm Bracket	1
44	30207-S	Enguaging Spring	1
45	20217-25	Return Spring	1
46	N-173	#10 Nyloc Nut	1
47	30212	Enguaging Handle (Coated)	1
48	B-245	#10-24 Carriage Bolt	1
49	30206	5/8"x3/4"x1 1/2"Bushing	1
	300012	Triangle Plate Assembly (Inc.#49,50,51,52,60,F-102)	
50	300011	Weldment - Triangle Plate	1
51	B-185	5/8"-11 x 2" Bolt	2
52	N-180	5/8"-11 Jam Lock Nut	2
53	30224	Flat Idler Pulley	2
54	30234	V Pulley	1
55	B-117	1/2"-13x1.25" Bolt	1
56	F-101	1/4"-28 90 Grease Fitting	1
57	B-118-G	1/2 x 1 1/2 Shoulder Bolt (Incl.- Ref. #56)	1
58	30223	Idler Arm	1
59	30214-86	Stabilizer Bar	2
60	N-181	5/8 - 11 Lock nut	2
61	20276	Bronze Bushing	1
62	W-112	1/2" Lock Washer	1
63	300054	60" Center Front Baffle	1
64	B-135	3/8"-16x1" Bolt	5
	300048	Deck Pulley Guard Kit F/Fan Set-Up (Optional)	

* Use individually or a combination of 10203, 65278 and 30112 to achieve proper belt alignment between the triangle plate and the top center deck spindle pulley.

DIXIE CHOPPER

HUBS AND BELTS

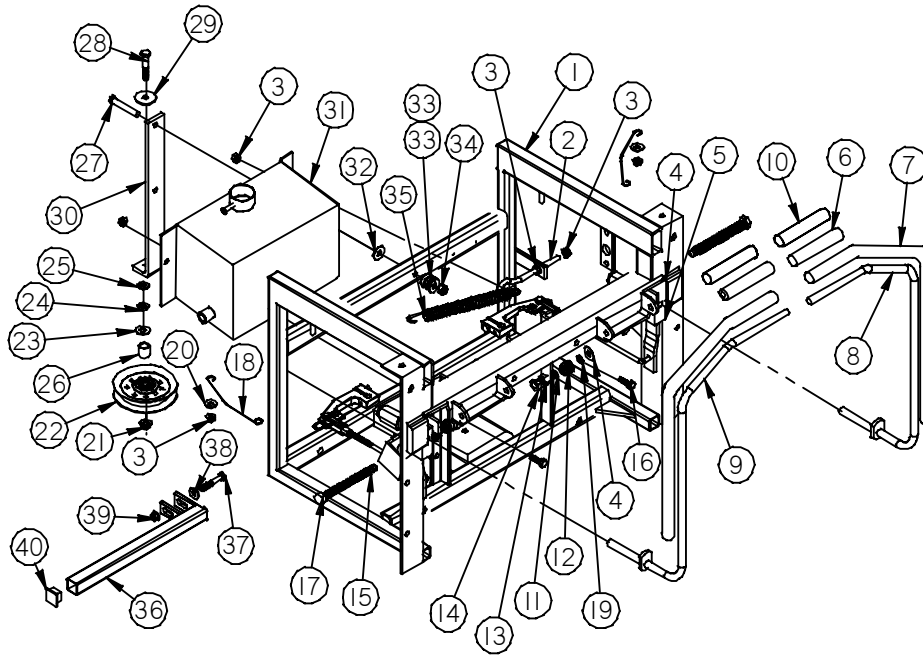


REF #	PART #	DESCRIPTION	QTY.
	10161	Outside Complete Spindle Assembly	
	10161-L	Center Complete Spindle Assembly	
1	N-167	1" Nut	3
2	W-146	1/4" Washer	10
3	W-137	1" Belleville Washer	6
4	9907525X100S	5.25" Pulley	3
5	W-131	1/8" Washer	4
6	30218	Sealed Bearing	3
7	30241	Deck Hub (2 Snap Rings & 1 Bearing)	3
8	F-102	Grease Fitting	3
9	30219	Inner Deck Hub Spacer	3
10	30217	Short Blade Shaft	2
11	30242	1/2" Blade Spacer	3
12	W-101	Fiber Washer	3
13	30227-60H	60" Standard High Lift Blade	3
	30227-60N	60" Heavy Duty High Lift Blade (Optional)	

REF #	PART #	DESCRIPTION	QTY.
14	W-100	5/8" Belleville Washer	3
15	B-121	2.5" Blade Bolt (use w/o blade spacer)	
	B-121-L	3" Blade Bolt (use with blade spacer)	3
	B-121-LL	3.25" Blade Bolt (use with Whiz-Mow)	
16	9907675X100S	6.75" Pulley	1
17	30217-L	Long Blade Shaft	1
18	9907B85	Engine - Deck Belt	1
19	9907B130	Deck Belt	1
20	9907B41	Engine-Trans. Belt (not shown)	1
21	300058	Fan - 1" x 8 1/4" Steel Gray & Decal	3
22	788080	Retainer Ring	
23	67255	Spindle Hub Caps	2
	30302	Whiz-Mow (Optional)	
	98124	Hard-Faced 60" Blades (Optional)	
	98005	Offset 60" Blades (Optional)	

DIXIE CHOPPER

TRANSMISSION FRAME ASSEMBLY

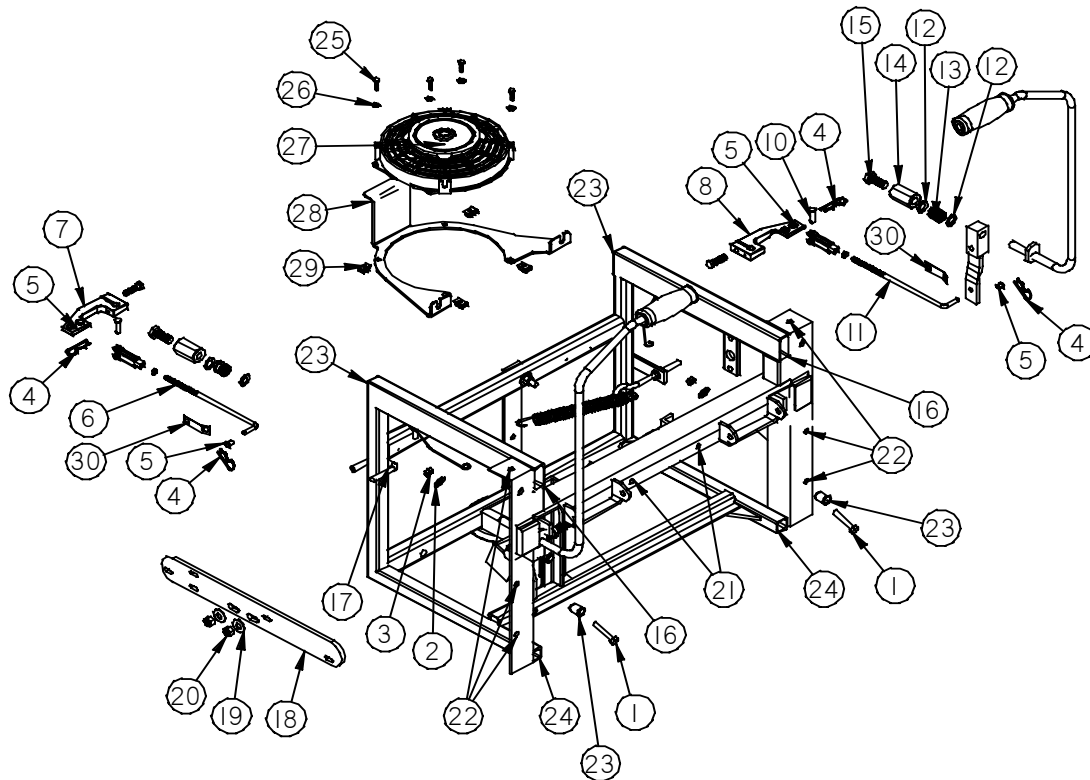


REF #	PART #	DESCRIPTION	QTY.
1	100007	Low Ride Transmission Frame	1
2	B-150	5/16" x 2 1/2" Eye Bolt	1
3	N-103-W	5/16"-18 Whiz Flange Nut	8
4	W-171	1/2" ID. x 1.25 OD. Teflon Washer	4
5	65205	Steering Block Weldment	2
6	20257	Rubber Handle	2
7	400037	Foam Lever Sleeve	2
8	400069	Left Steering Lever	1
9	400068	Right Steering Lever	1
10	67259	Foam Handle Grip	1
11	W-110	Machine Washer	2
12	20252	Spring	2
13	N-110	1/2"-13 Hex Nut	2
14	N-111	1/2"-13 Hex Jam Nut	2
15	F-101	Grease Fitting 90 degree	2
16	B-131	5/16"-18x1" Bolt	2
17	B-143-G	1/2"x4 1/2" Bolt w/Grease Fitting	2
18	40218	Seat Strap	2
19	W-156	9/16" Standard Flat Washer	2
20	W-113	5/16" Flat Washer	4

REF #	PART #	DESCRIPTION	QTY.
21	N-117	3/8"-16 Large Flange Lock Nut	1
22	30234	Pulley	1
23	W-124	3/8" Machine Washer .120"	
24	W-123	3/8" Machine Washer .060"	
25	W-176	3/8" Machine Washer .031"	
26	97415	Spacer (Inside Pulley)	1
27	B-165	3/8"-16 x 2" Bolt	1
28	B-124	3/8"-16x1 3/4" Bolt	1
29	W-104	3/8 Standard Flat Washer	1
30	100011	Idler Arm	1
31	200008	Hydraulic Tank	1
32	W-125	3/8"x7/8" Plastic Washer	1
33	W-126	3/8" Dish Spring Washer	2
34	N-107	3/8"-16 Nylon Lock Nut	1
35	10222	Spring	1
36	97021	Wide Fender Brace (SP2800, XT3000, XWF2700, XT3200)	1
37	B-165	Bolt - 3/8"-16x2" Grade 5	1
38	W-113	Washer - 5/16" Standard Flatwasher	1
39	N-108	Nut - 3/8"-16 Whiz Flange	1
40	68142	Plastic Plug 1"x1"	1

DIXIE CHOPPER

X2001, X2503, XK2503, XWF2700, SP2800EFI, XG2703 TRANSMISSION FRAME ASSEMBLY (CONT'D)

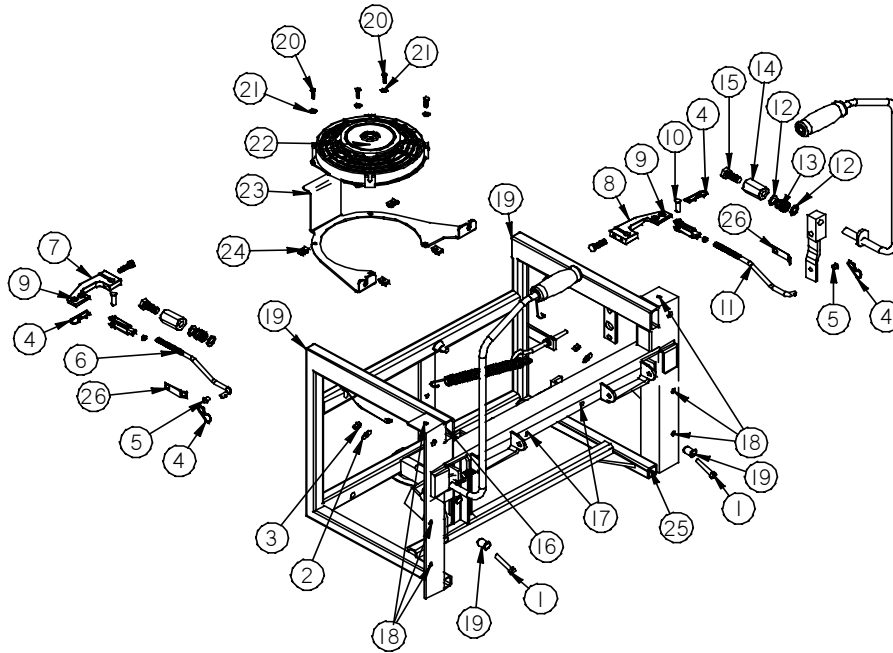


REF #	PART #	DESCRIPTION	QTY.
1	B-129	5/16"-18x2 1/4" Bolt	2
2	W-113	5/16" Flat Washer	2
3	N-103	5/16"-18 HH Nut	2
4	20224	Hairpin Clip	4
5	20222	Plastic Bushing	4
6	200001	Right Pump Control Rod	1
	20214	Yoke - 5/16"-24	1
	N-105	Nut - 5/16"-24	1
7	65207-R	Right Pump Control Arm	1
	P-118	Roll Pin - 3/16"x1 1/2"	1
	B-131	Bolt - 5/16"-18	1
8	65207-L	Left Pump Control Arm	1
	P-118	Roll Pin - 3/16"x1 1/2"	1
	B-131	Bolt - 5/16"-18	1
10	P-101	Pin - 5/16"x1" Clevis	2
	200002	Left Pump Control Rod	1
11	20214	Yoke - 5/16"-24	1
	N-105	Nut - 5/16"-24	1

REF #	PART #	DESCRIPTION	QTY.
12	W-110	Washer - 1/2" Machine	4
13	20252	Spring	2
14	N-175	Coupling Nut - 1/2"-13x1.850 Long	2
15	B-138	Bolt - 1/2"-13x1"	2
16	67256	Plastic Plug 1"x2"	2
17	B-206	U-Bolt (EFI Only) - 3/8"-16	1
18	600031	EFI Module Mount	1
19	W-104	Washer (EFI Only) - 3/8" Flat	2
20	N-107	Nut (EFI Only) - 3/8"-16 Nylon Lock	2
21	N-188	1/4"-20 AR Series Threaded Insert	2
22	N-152	1/4"-20 Nut Insert	6
23	N-153	5/16"-18 Insert Nut	4
24	68142	Plastic Plug 1"x1"	2
25	B-203	10-24x3/4" S.S. Bolt (XWF2700, SP2800EFI)	4
26	W-152	#10 S.S. Washer (XWF2700, SP2800EFI)	4
27	200043	Electric Fan (XWF2700, SP2800EFI)	1
28	200042	Electric Fan Mount (XWF2700, SP2800EFI)	1
29	C-105	10-24 U-Clips (XWF2700, SP2800EFI)	4
30	20223	Backing Clip	2

DIXIE CHOPPER

XT3000, XT3200 TRANSMISSION FRAME ASSEMBLY (CONT'D)

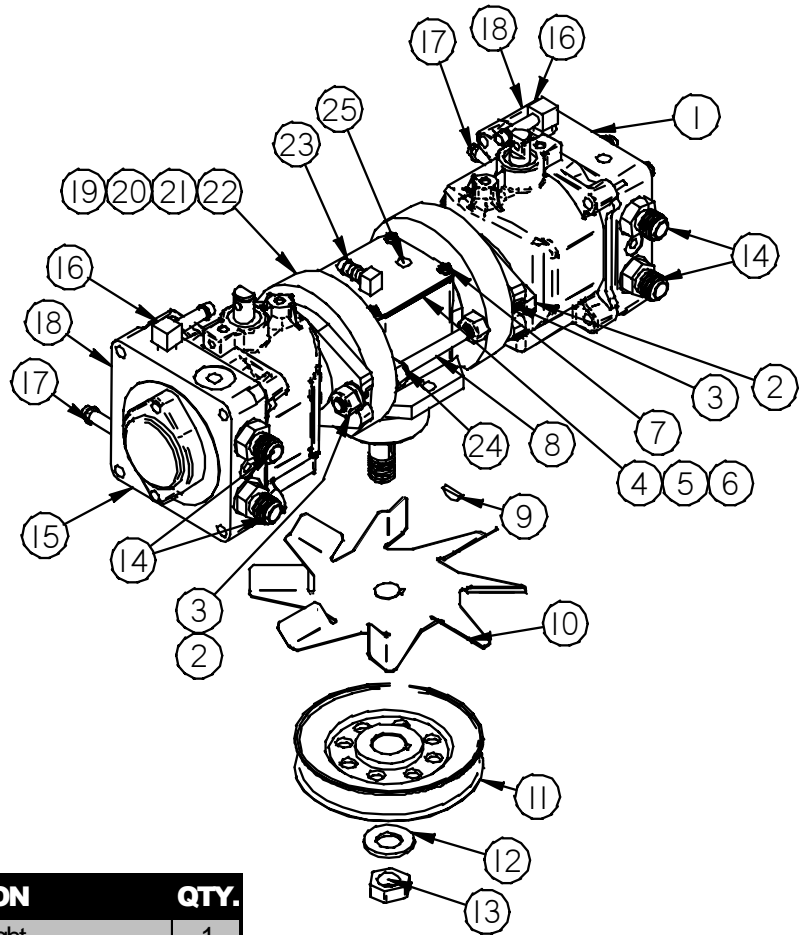


REF #	PART #	DESCRIPTION	QTY.
1	B-129	5/16"-18x2 1/4" Bolt	2
2	W-113	5/16" Flat Washer	2
3	N-103	5/16"-18 HH	2
4	20224	Hairpin Clip	4
5	20222	Plastic Bushing	4
6	200020	16 Ser. Right Pump Control Rod	1
	20214	5/16"-24 Yoke	1
	N-105	5/16"-24 Nut	1
7	200004	16 Ser. Right Pump Control Arm	1
	P-118	3/16"x1 1/2" Roll Pin	1
	B-131	5/16"-18 Bolt	1
8	200005	16 Ser. Left Pump Control Arm	1
	P-118	3/16"x1 1/2" Roll Pin	1
	B-131	5/16"-18 Bolt	1
10	P-101	5/16"x1" Clevis Pin	2

REF #	PART #	DESCRIPTION	QTY.
11	200019	16 Ser. Left Pump Control Rod	1
	20214	5/16"-24 Yoke	1
	N-105	5/16"-24 Nut	1
12	W-110	1/2" Machine Washer	4
13	20252	Spring	2
14	N-175	1/2"-13x1.850 Long Coupling Nut	2
15	B-138	1/2"-13x1" Bolt	2
16	67256	Plastic Plug 1"x2"	2
17	N-188	1/4"-20 AR Series Threaded Insert	2
18	N-152	1/4"-20 Nut Insert	6
19	N-153	5/16"-18 Nut Insert	4
20	B-203	10-24x3/4" S.S. Bolt	4
21	W-152	#10 S.S. Washer	4
22	200043	Electric Fan	1
23	200042	Electric Fan Mount	1
24	C-105	10-24 U-Clip	4
25	68142	Plastic Plug 1"x1"	2
26	20223	Backing Clip	2

DIXIE CHOPPER

X2001, X2503, XK2503, XWF2700, XG2703, SP2800EFI TRANSMISSION & DRIVE



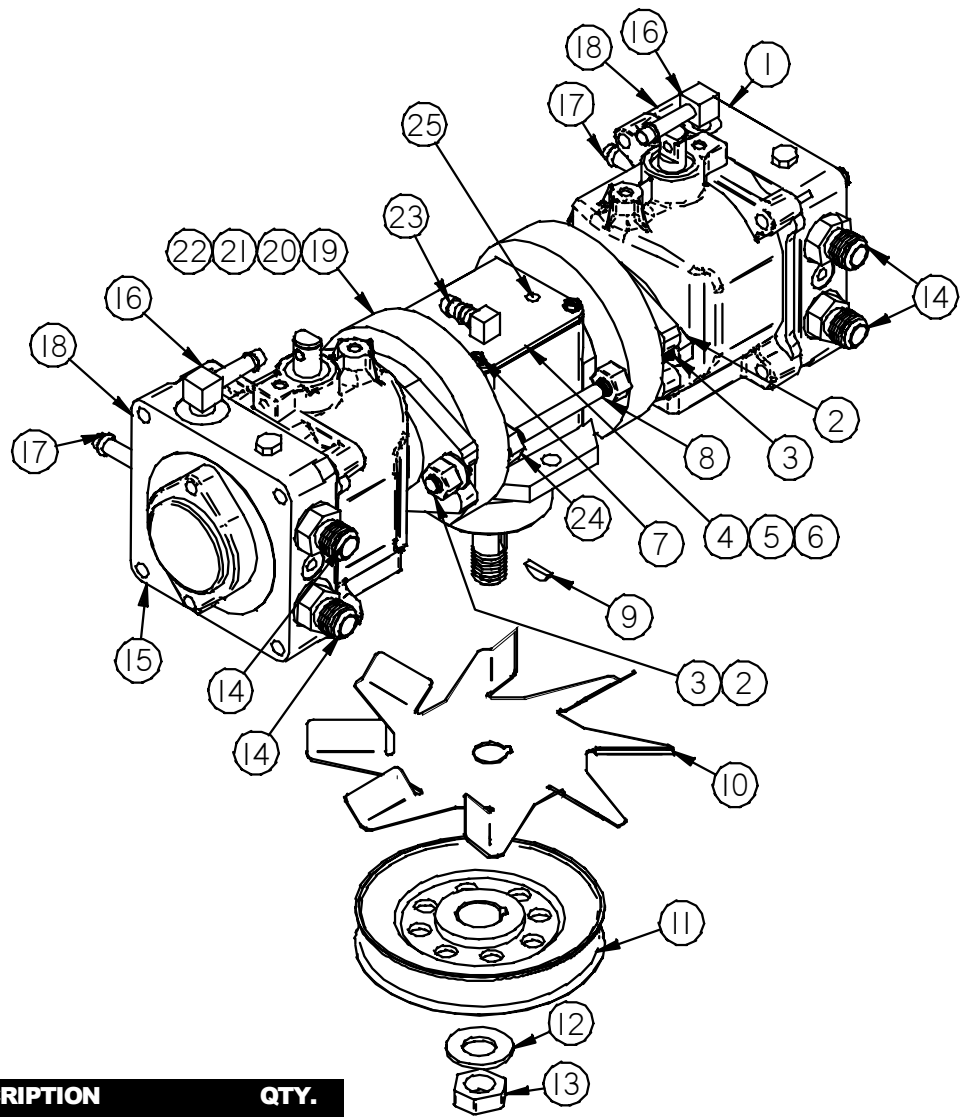
REF #	PART #	DESCRIPTION	QTY.
1	65070	Sundstrand 10A Pump - Right	1
2	N-168	3/8"-24 Whiz Flange Nut	4
3	W-169	Washer - 5/16" Grade 8 Flat	4
4	000365201	T Gear Box (Complete Gear Box Only)	1
5	788101	T Box Gasket	1
6	772150	T Box Cover Plate	1
7	792025	T Box Cover Plate Bolt	4
8	65206	3/8" Threaded Rod	2
9	K-102	Woodruff Key 3/16"x 3/4"	1
10	200040	7 1/4" Fan	1
11	200041	525X750S Transmission Pulley	1
12	W-132	3/4" Belleville Washer	1
13	N-114	3/4"-16 Jam Nut	1
14	65004	High Pressure Port Fitting	4
15	65071	Sundstrand 10A Pump - Left	1

REF #	PART #	DESCRIPTION	QTY.
16	67015	Case Bleed Fitting	2
17	65072	Charge Pump Inlet Fitting	2
18	2513030	Dump Valve - no cross port	2
19	65001	Small Bell Housing	2
20	788030B	Bearing Plate Gasket	2
21	792026	Bell Housing Bolt	8
22	65024	Pump O-Ring	2
23	68031	T Box Fitting (Brass)	1
24	N-184	3/8"-24 Gr. 8 Standard Hex Nut	4
25	28534	T-Box Plug	1

DIXIE CHOPPER

XT3000, XT3200

TRANSMISSION & DRIVE

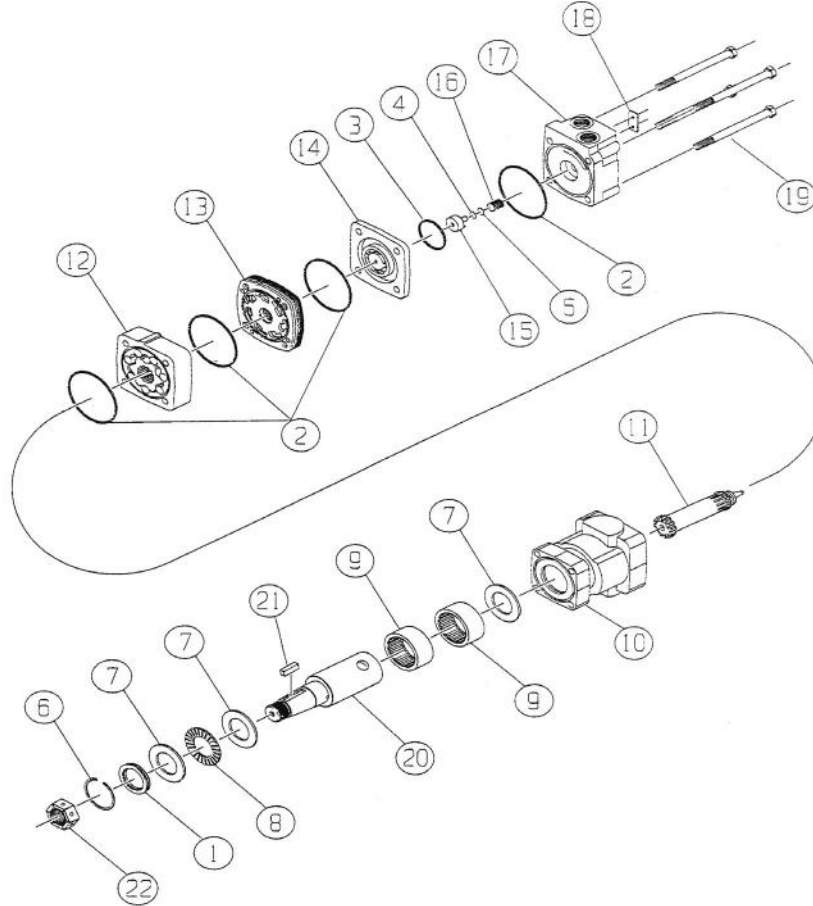


REF #	PART #	DESCRIPTION	QTY.
1	200012	Pump -16 Ser. Right	1
2	N-168	3/8"-24 Whiz Flange Nut	4
3	W-169	5/16" Grade 8 Flat Washer	4
4	000365201-L	T-Gear Box (Complete Gear Box Only)	1
5	788101	T-Box Gasket	1
6	772150	T-Box Cover Plate	1
7	792025	T-Box Cover Plate Bolt	4
8	65206	3/8" Threaded Rod	2
9	K-102	Woodruff Key 3/16"x3/4"	1
10	200040	Fan 7 1/4"	1
11	200041	525X750S Transmission Pulley	1
12	W-132	3/4" Belleville Washer	1
13	N-114	3/4"-16 Jam Nut	1
14	65004	High Pressure Port Fitting	4

REF #	PART #	DESCRIPTION	QTY.
15	200013	Pump -16 Ser. Left	1
16	67015	Case Bleed Fitting	2
17	72016	Straight 1/2"x1/2" Fitting	2
18	2513030	Dump Valve - No Cross Port	2
19	200003	Bell Housing - 16 Ser. Pump	2
20	788030B	Bearing Plate Gasket	2
21	792026	Bell Housing Bolt	8
22	65024	Pump O Ring	2
23	68031	T-Box Fitting (Brass)	1
24	N-184	3/8"-24 Gr. 8 Standard Hex Nut	4
25	28534	T-Box Plug	1

DIXIE CHOPPER

X2001, X2503, XK2503, XWF2700, XG2703, SP2800EFI, XT3000 14 Cu. In WHEEL MOTOR

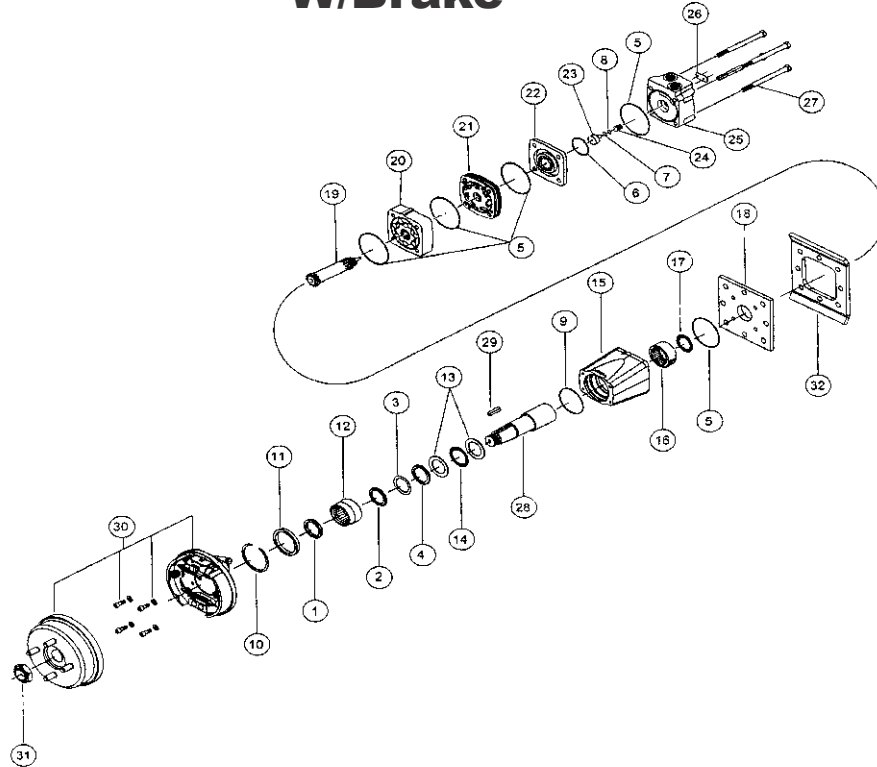


REF #	PART #	DESCRIPTION	QTY.
	67114	Complete 14 Cu. In. Wheel Motor Identification # W80379	2
	PB333700	Seal Kit (Contains item 1-5)	
1	PB018069	Dust/Shaft Seal	1
2	IN KIT	Body Seal	4
3	IN KIT	Commutator Seal	1
4	IN KIT	O-ring Seal	1
5	IN KIT	Teflon Back-up Seal	1
6	PB018073	Snap Ring	1
7	PB018054	Thrust Washer	3
8	PB018052	Thrust Bearing	1
9	PB018053	Housing Bearing	2
10	PB130015	Housing	1

REF #	PART #	DESCRIPTION	QTY.
11	PB014027	Drive Link	1
12	PB332014	Rotor Assembly	1
13	PB015008	Manifold	1
14	PB012013	Commutator Assembly	1
15	PB018056	Endcover Piston	1
16	PB018059	Piston Spring	1
17	PB160007G	Endcover	1
18	N/A	ID Tag	1
19	PB334014	Assembly Bolts	4
20	PW72545	Shaft	1
21	PW72546	Shaft Key	1
22	PB339303P	Shaft Nut	1

DIXIE CHOPPER

XT3200 18 Cu. In. WHEEL MOTOR W/Brake



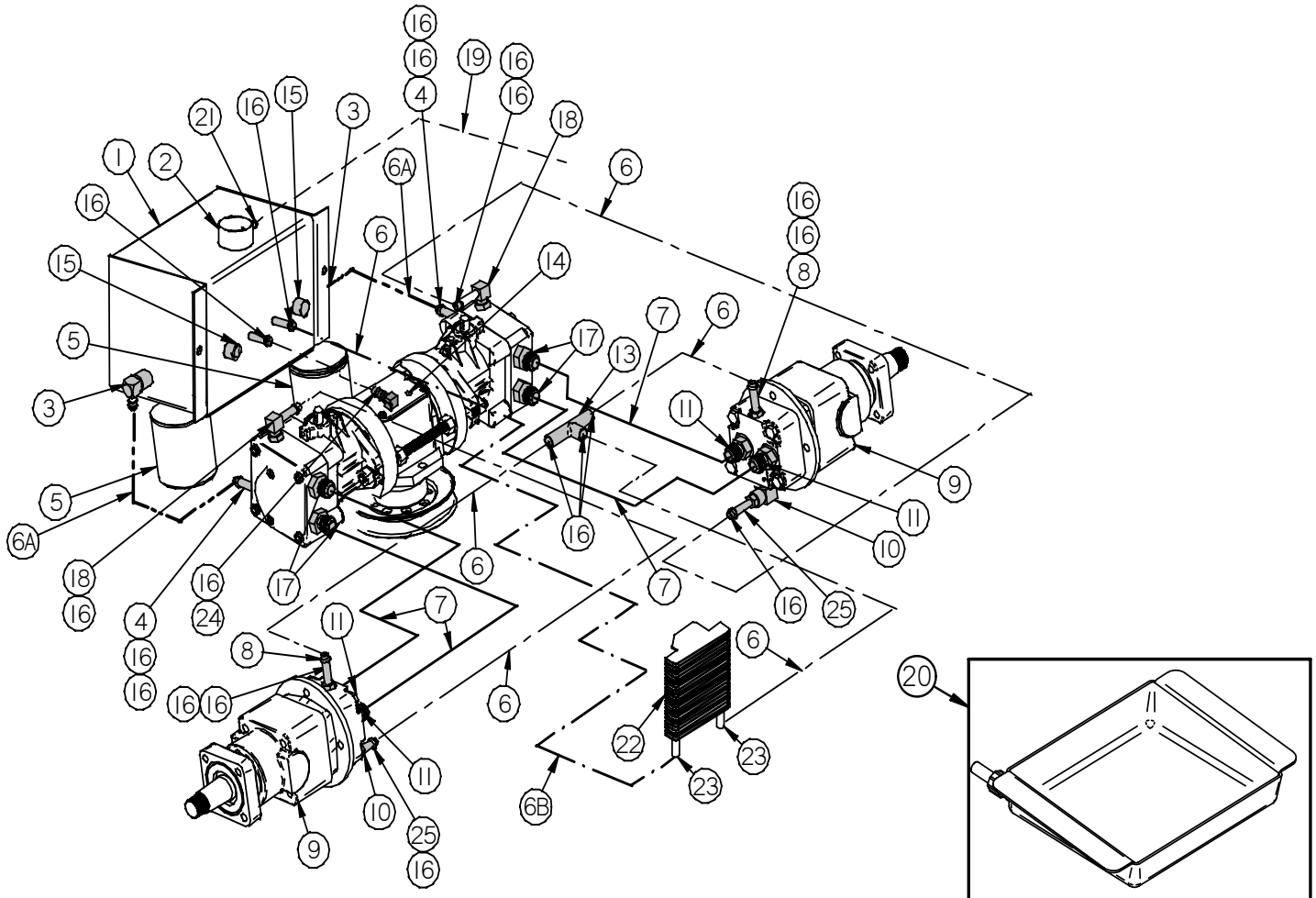
REF #	PART #	DESCRIPTION	QTY.
	200018	18 Cu. In. Wheel Motor w/Brake System	2
	300333850	Seal Kit - Contains Items 1-9	
1	In-Kit	Dust Seal	1
2	In-Kit	Metal Back Up Ring	1
3	In-Kit	Back Up Seal	1
4	In-Kit	Shaft Seal	1
5	In-Kit	Body Seal	5
6	In-Kit	Commutator Seal	1
7	In-Kit	O-Ring Seal	1
8	In-Kit	Back Up Seal	1
9	In-Kit	Housing Seal	1
10	700018013	Retaining Ring	1
11	700018085	Bearing Spacer	1
12	300018021	Front Thrust Bearing	1
13	300018002	Thrust Washer	2
14	300018003	Front Thrust Bearing	1
15	300130035	"35" Housing	1

REF #	PART #	DESCRIPTION	QTY.
16	500018003	Rear Housing Bearing	1
17	300018107	Rear Thrust Bearing	1
18	300012016	Mid Mount Plate	1
19	300014027	18 Drive Link	1
20	300332018	18 Rotor Set	1
21	300015008	Manifold	1
22	300012013	Commutator Assembly	1
23	300018056	Piston	1
24	300018059	Piston Spring	1
25	300160007G	Endcover	1
26	N/A	"Not Orderable"	1
27	300335018	18 Rotor Bolts	4
28	300110051	Shaft	1
29	300339102	Shaft Key	1
30	300018105WHAZ	Brake Kit	1
31	PW72693	Lock Nut	1
32	200016	Wheel Motor Bracket Face Plate (Face Plate Comes With Frame)	

DIXIE CHOPPER

X2001

HYDRAULIC HOSE DIAGRAM

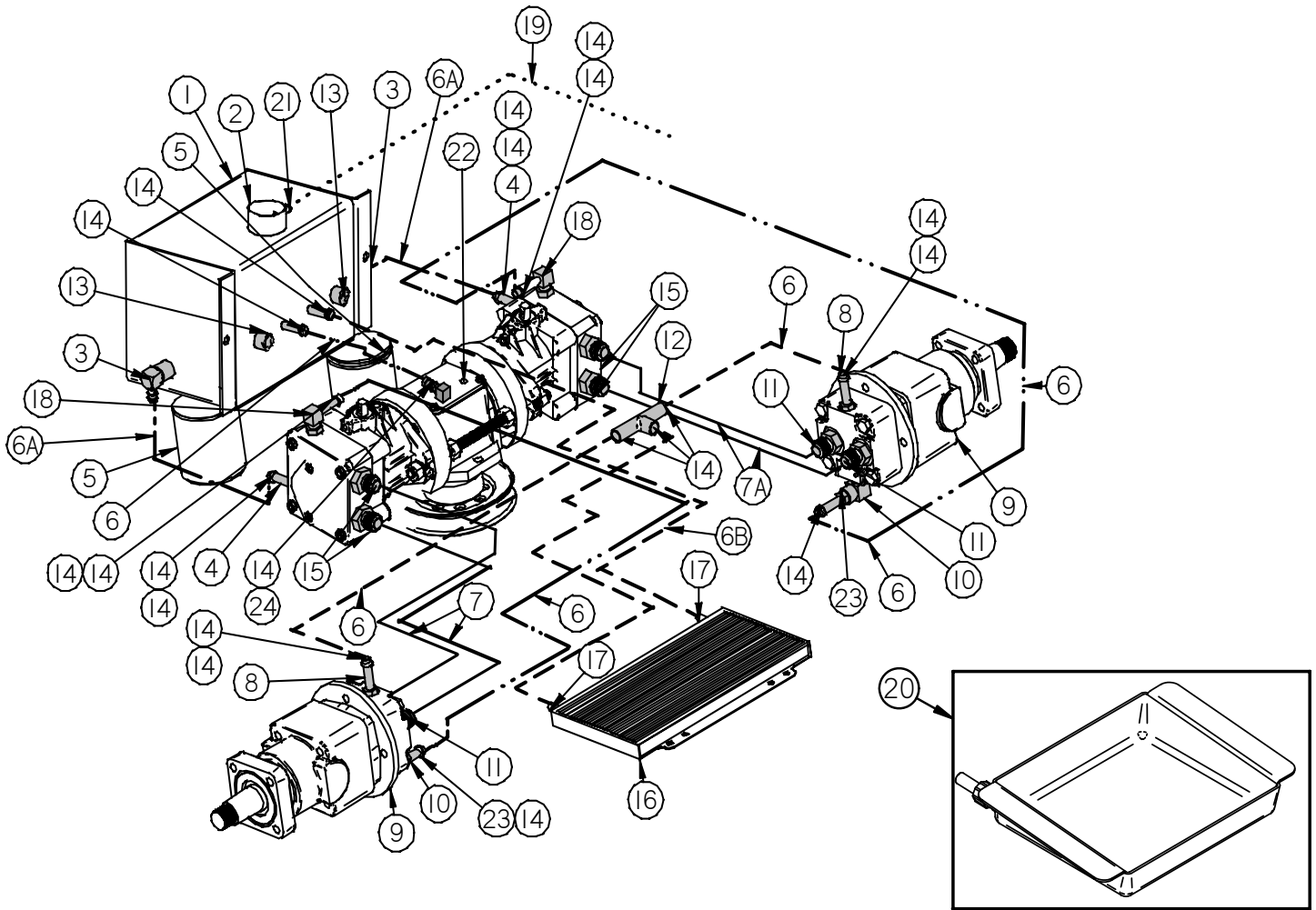


REF #	PART #	DESCRIPTION	QTY.	REF #	PART #	DESCRIPTION	QTY.
1	200008	Hydraulic Tank and Cap	1	13	67008	3/8" Tee	1
2	40117-C 40117-T	Oil Cap T-Handle Cap w/ Dipstick (Optional)		14	28534	T-Box Plug	1
3	60125	90 3/8" NPT x 3/8" Barb	2	15	65009	1/4" Pipe Plug	1
4	65072	Charge Pump Inlet Fitting	2	16	67013	3/8" Hose Clamp	20
5	68140	Filter - Hydro Zinga 40 Micron	2	17	65004	High Pressure Port Fitting	4
6	65108	3/8" Clear Hose	/ft.	18	67015	90 degree fitting	2
6A	200027	3/8" Black Braided Hose	/ft.	19	97374	5/16" Black Hose	/ft
6B	60109	3/8" Black Hose	/ft.	20	900018	Optional - Drain Pan for Hydro Filter	
7	65073	High Pressure Black Hydro Hose	4	21	72012	5/16" Clamp	1
8	67016	1/4" O-ring x 3/8" Barb Straight	2	22	N/A	Hydraulic Cooler F/Kohler Engine (Mounted on right side of engine.)	
9	67114	Wheel Motor - 14 Cu.In.	2	23	68231	#4 Micro Clamp	2
10	67017	90 degree fitting	2	24	68031	1/8" x 3/8" 90 Deg. Brass Fitting	1
11	87104	Steel Fitting	4	25	67014	1/4" MPT to 3/8" Barbed Brass Fitting	2

DIXIE CHOPPER

X2503, XK2503, XWF2700, XG2703

HYDRAULIC HOSE DIAGRAM

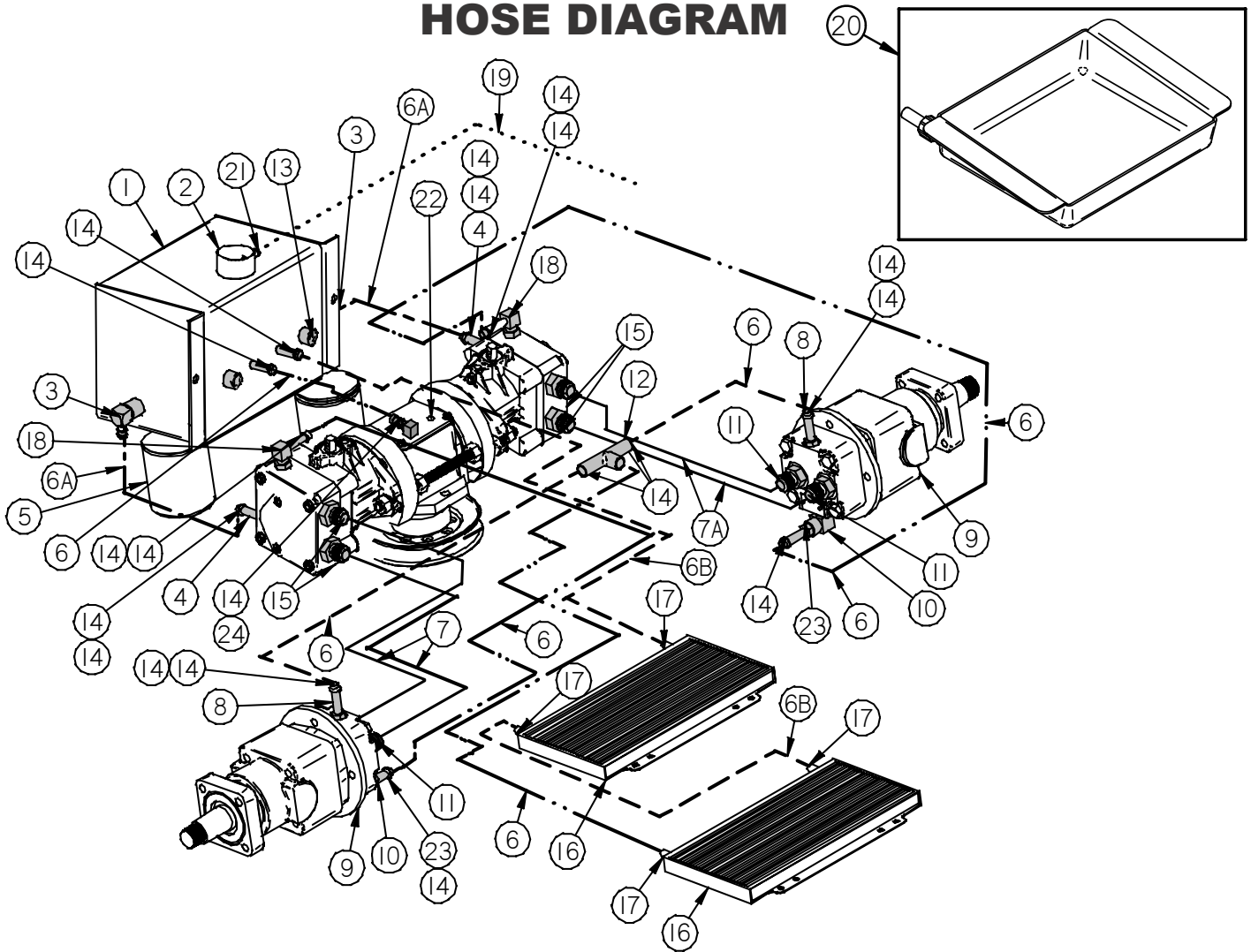


REF #	PART #	DESCRIPTION	QTY.
1	200008	Hydraulic Tank and Cap	1
2	40117-C 40117-T	Oil Cap T - Handle w/Dipstick (Optional)	
3	60125	90 - 3/8" NPT x3/8" Barb	2
4	65072	Charge Pump Inlet Fitting	2
5	68140	Filter - Hydro Zinga 40 Micron	2
6	65108	3/8" Clear Hose	/ft
6A	200027	3/8" Black Ribbed Hose (Exterior Braided)	/ft
6B	60109	3/8" Black Hose	/ft
7	65073	High Pressure Black Hydro Hose Left Side (X2503, XK2503) (XWF2700, XG2703)	4 2
7A	65074	High Pressure Black Hydro Hose Right Side (XWF2700, XG2703)	2
8	67016	1/4" Oring x 3/8" Barb	2
9	67114	Wheel Motor - 14 Cu. In.	2

REF #	PART #	DESCRIPTION	QTY.
10	67017	90 - degree fitting	2
11	87104	Steel Fitting	4
12	67008	3/8" Tee	1
13	65009	3/8" Pipe Plug	1
14	67013	3/8" Clamps	20
15	65004	High Pressure Port Fitting	4
16	60103-L	Oil Cooler	1
17	68231	#4 Micro Hose Clamp	2
18	67015	90 degree fitting	2
19	97374	5/16" Black Hose	/ft
20	900018	Optional - Drain Pan for Hydro Filter	
21	72012	5/16" Clamp	1
22	28534	T-Box Plug	1
23	67014	Brass Fitting	2
24	68031	1/8" x 3/8" 90 Deg. Brass Fitting	1

DIXIE CHOPPER

SP2800EFI HYDRAULIC HOSE DIAGRAM



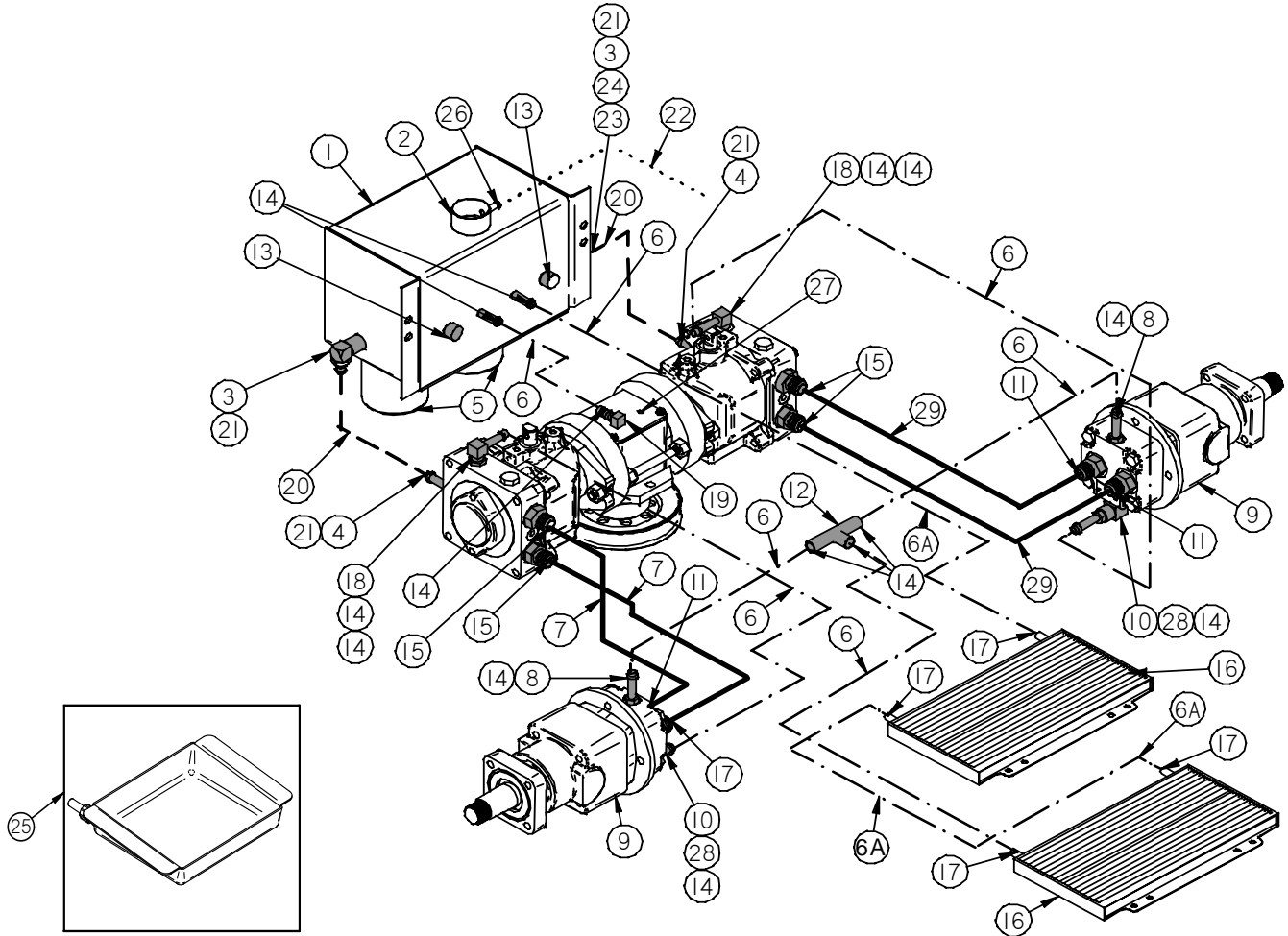
REF #	PART #	DESCRIPTION	QTY.
1	200008	Hydraulic Tank and Cap	1
2	40117-C 40117-T	Oil Cap T - Handle w/Dipstick (Optional)	
3	60125	90 - 3/8" NPT x3/8" Barb	2
4	65072	Charge Pump Inlet Fitting	2
5	68140	Filter - Hydro Zinga 40 Micron	2
6	65108	3/8" Clear Hose	/ft
6A	200027	3/8" Black Ribbed Hose (Exterior Braided)	/ft
6B	60109	3/8" Black Hose	/ft
7	65073	High Pressure Black Hydro Hose Left	2
7A	65074	High Pressure Black Hydro Hose Right	2
8	67016	1/4" Oring x 3/8" Barb	2
9	67114	Wheel Motor - 14 Cu. In.	2
10	67017	90 - degree fitting	2

REF #	PART #	DESCRIPTION	QTY.
11	87104	Steel Fitting	4
12	67008	3/8" Tee	1
13	65009	3/8" Pipe Plug	1
14	67013	3/8" Clamps	20
15	65004	High Pressure Port Fitting	4
16	60103-L	Oil Cooler	2
17	68231	#4 Micro Hose Clamp	4
18	67015	90 degree fitting	2
19	97374	5/16" Black Hose	/ft
20	900018	Optional - Drain Pan for Hydro Filter	
21	72012	5/16" Black Clamp	1
22	28534	T-Box Plug	1
23	67014	Brass Fitting	2
24	68031	1/8" x 3/8" 90 Deg. Brass Fitting	1

DIXIE CHOPPER

XT3000

HYDRAULIC HOSE DIAGRAM



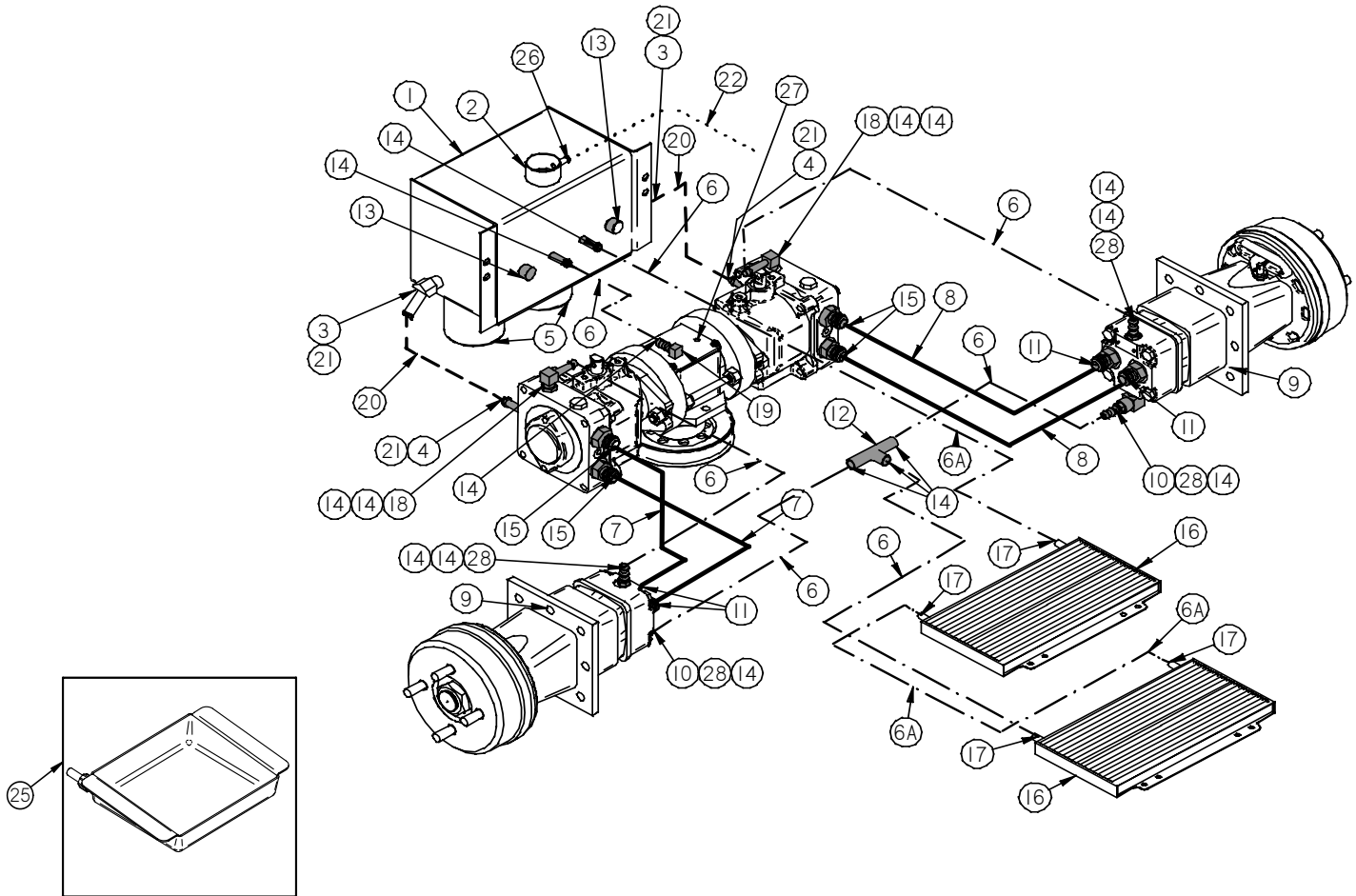
REF #	PART #	DESCRIPTION	QTY.
1	200008	Hydraulic Tank and Cap	
2	40117-C 40117-T	Oil Cap T - Handle Cap w/Dipstick (Optional)	
3	72015	90 Deg. 3/8"x1/2" Fitting	2
4	72016	Straight 1/2"x1/2" Fitting	2
5	68140	Filter - Hydro Zinga 40 Micron	2
6	65108	3/8" Clear Hose	/ft.
6A	60109	3/8" Black Hose	/ft.
7	65073	High Pressure Black Hydro Hose Left	2
8	67016	1/4" O-Ring x3/8" Barb Fitting	2
9	67118-W	Wheel Motor - 18 Cubic In.	2
10	67017	90 - Degree Fitting	2
11	87104	Steel Fitting	4
12	67008	3/8" Tee	1
13	65009	3/8" Pipe Plug	2

REF #	PART #	DESCRIPTION	QTY.
14	67013	Clamps For 65018 Hose (Green)	14
15	65004	High Pressure Port Fitting	4
16	60103-L	Oil Cooler	2
17	68231	#4 Micro Hose Clamp	4
18	67015	90 Degree Fitting	2
19	68031	T-Box Fitting (Brass)	1
20	200025	1/2" Black Ribbed Hose (Exterior Braided)	/ft.
21	97098	1/2" Clamp	4
22	97374	5/16" Black Hose	/ft.
23	60115	Fitting - 3/8" Close Nipple	1
24	200023	Fitting - 3/8" Pipe Coupler	1
25	900018	Optional - Drain Pan for Hydro Filter	
26	72012	Black Clamp	1
27	28534	T-Box Plug	1
28	67014	Brass Fitting	2
29	65074	High Pressure Black Hydro Hose Right	2

DIXIE CHOPPER

XT3200

HYDRAULIC HOSE DIAGRAM

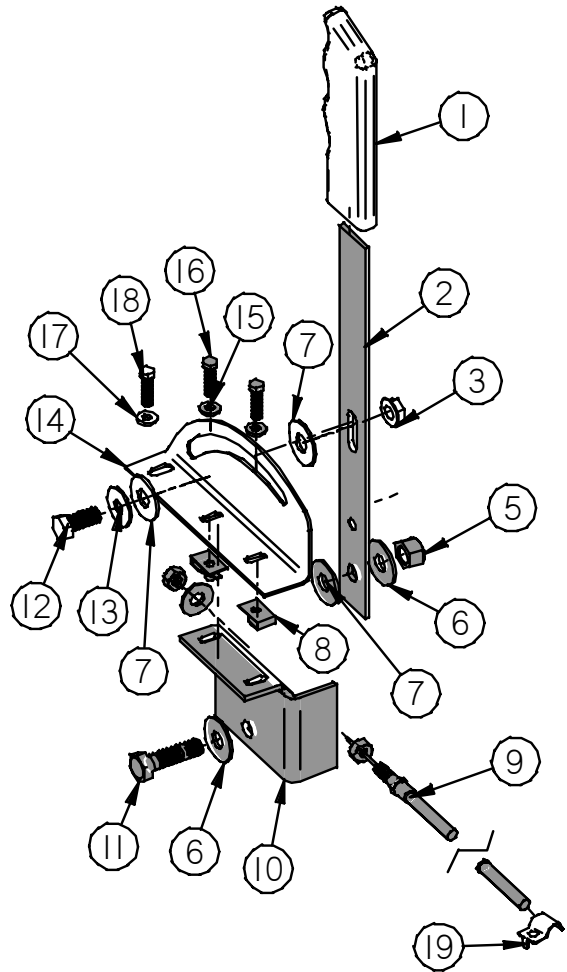
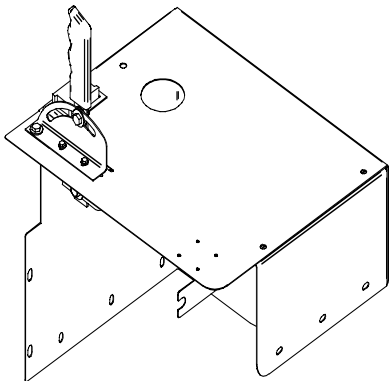


REF #	PART #	DESCRIPTION	QTY.
1	200008	Hydraulic Tank and Cap	1
2	40117-C 40117-T	Oil Cap T - Handle Cap w/Dipstick (Optional)	
3	200048	45 Deg. 3/8"x1/2" Bead Fitting	2
4	72016	Straight 1/2"x1/2" Fitting	2
5	68140	Filter - Hydro Zinga 40 Micron	2
6	65108	3/8" Clear Hose	/ft.
6A	60109	3/8" Black Hose	/ft.
7	65073	High Pressure Black Hydro Hose Left	2
8	65074	High Pressure Black Hydro Hose Right	2
9	200018	Wheel Motor - 18 Cubic In. w/brake	2
10	67017	90 - Degree Fitting	2
11	87104	Steel Fitting	4
12	67008	3/8" Tee	1

REF #	PART #	DESCRIPTION	QTY.
13	65009	3/8" Pipe Plug	1
14	67013	3/8" Clamps	16
15	65004	High Pressure Port Fitting	4
16	60103-L	Oil Cooler	2
17	68231	#4 Micro Hose Clamp	4
18	67015	90 Degree Fitting	2
19	68031	T-Box Fitting (Brass)	1
20	200025	1/2" Black Ribbed Hose (Exterior Braided)	/ft.
21	97098	1/2" Clamp	4
22	97374	5/16" Black Hose	/ft.
25	900018	Optional - Drain Pan for Hydro Filter	
26	72012	5/16" Clamp	1
27	28534	T-Box Plug	1
28	67014	Brass Fitting	4

DIXIE CHOPPER

THROTTLE ASSEMBLY

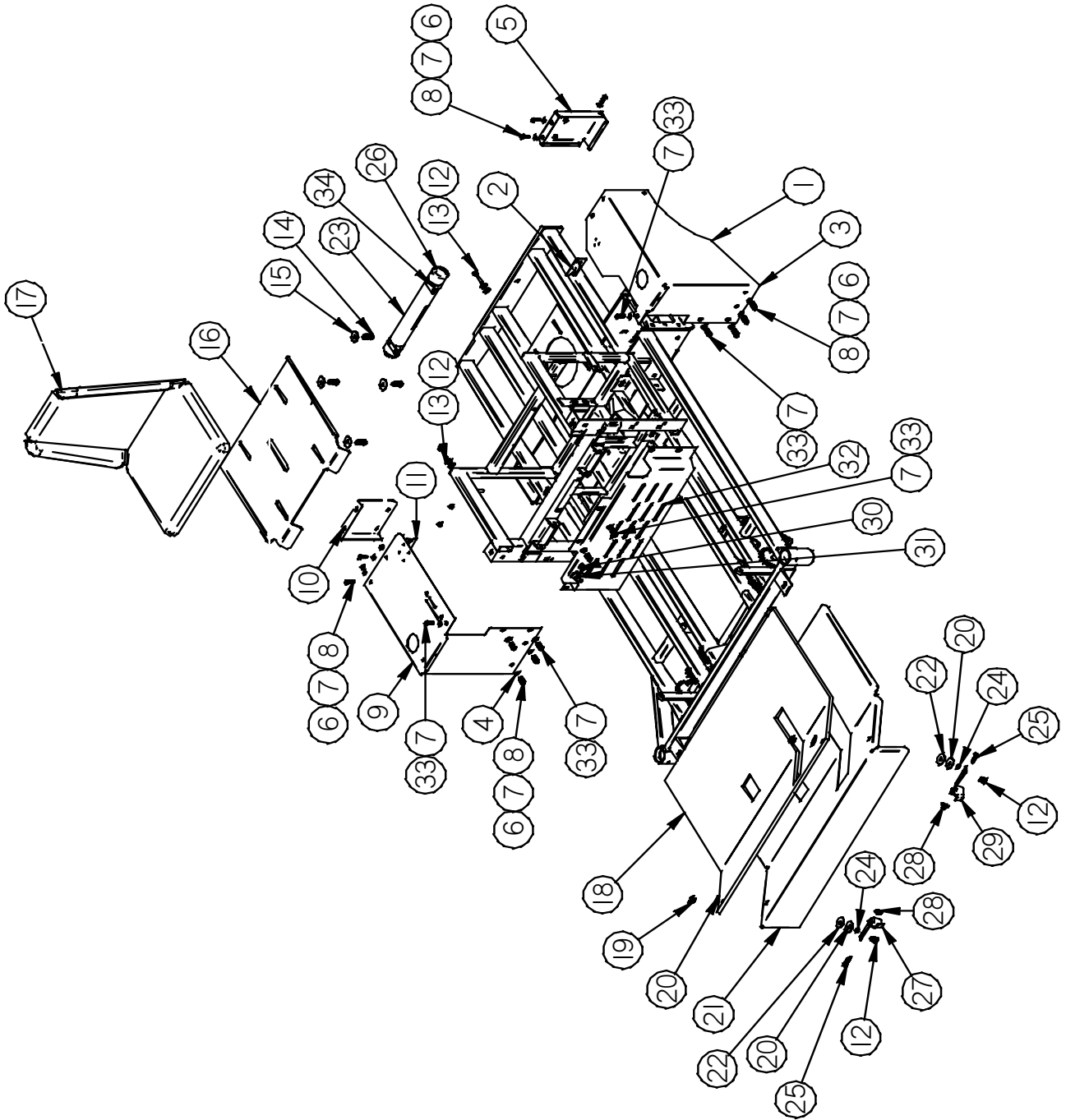


REF #	PART #	DESCRIPTION	QTY.
	68250	Complete Throttle Assembly F/ Kohler, Kawasaki, & Generac 2,5 - 11,15,16	
1	67258	Handle Grip (Black)	1
2	97012	Offset Throttle Handle (F/2003 & Older)	
	600062	Handle - Throttle F/all Models	1
3	N-134	5/16" Flange Lock Nut	1
5	N-107	3/8" -16 Nyloc Nut	1
6	W-104	3/8" Standard Flat Washer	2
7	W-125	3/8" Nylon Washer	3
8	C-105	Clip Nut	2
9	68249	Throttle Cable	1
		Washer	2
		Hex Nut	2
	68249-K	Throttle Handle & Cable Kit (F/2003 & Older)	

REF #	PART #	DESCRIPTION	QTY.
10	97011	Lower Throttle Mounting Bracket	1
11	B-108	3/8"-16 x1" Bolt	1
12	B-107	5/16"-18 x 3/4" Bolt	1
13	W-113	5/16" Flat Washer	1
14	65270	Upper Stainless Throttle Bracket	1
	400079	Kawasaki Stainless Throttle Bracket	1
15	W-152	#10 Stainless Washer	2
16	B-203	10-24x3/4" Stainless Bolt	2
17	W-153	1/4" Stainless Flat Washer	1
18	B-209	1/4"-20x3/4" Bolt	1
19	C-107	Clamp - Kohler, Kaw.	1
		Generac	2

DIXIE CHOPPER

X2001 BODY



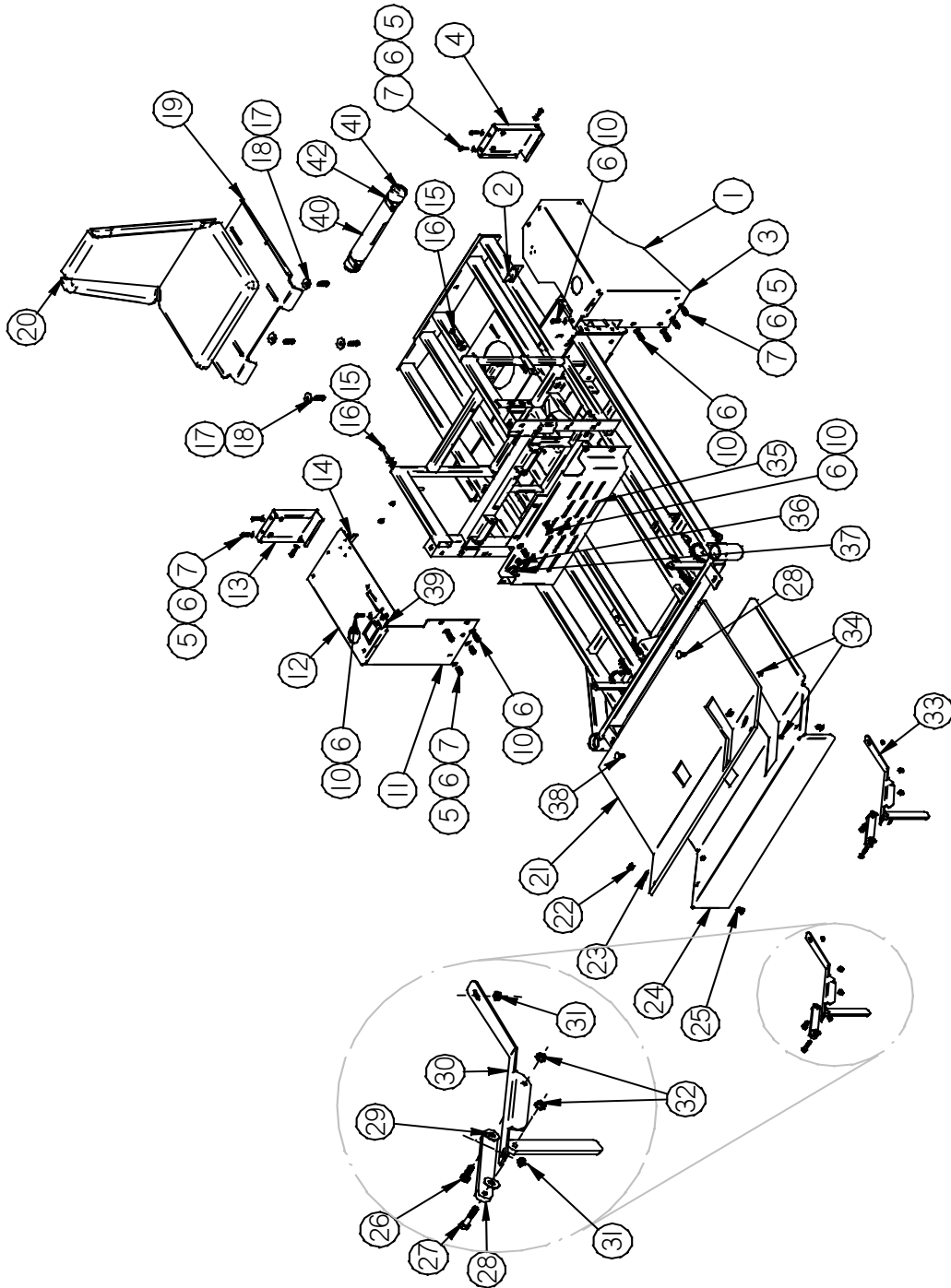


X2001 BODY

REF #	PART #	DESCRIPTION	QTY.	REF #	PART #	DESCRIPTION	QTY.
1	400001	Fender - 3Gal. Low Ride Left	1	20	W-106	3/8" Fender Washer	4
2	400035	Left Fender Mounting Tab	1	21	67268	Floor Pan	1
3	400029	Left Front 3 Gal. Fuel Tank Support Bracket	1	22	W-103	5/16" Rubber Washer	2
4	400030	Right Front 3Gal. Fuel Tank Support Bracket	1	23	900016	Docu-Tube (Clear Tube)	1
5	400031	Left Rear 3 Gal. Fuel Tank Support Bracket	1	24	N-103-W	5/16"-18 Whiz Flange Nut	2
6	B-103	1/4"-20x1/2" Stainless Bolt	10	25	B-131	5/16"-18x1" Grade 5 Bolt	2
7	W-153	1/4" Stainless Flat Washer	18	26	900017	Cap - Soft Vinyl (Red)	2
8	N-101	1/4"-20 Stainless Whiz Flange Nut	10	27	400022	Floor Pan Adapter Bracket-Right	1
9	400002	Fender - 3 Gal. Low Ride Right	1	28	N-131	5/16"-18 Nyloc Nut	2
10	400032	Right Rear 3Gal. Fuel Tank Support Bracket	1	29	400023	Floor Pan Adapter Bracket-Left	1
11	400036	Right Fender Mounting Tab	1	30	20248	Choke	1
12	B-105	5/16"-18x1 3/4" Full Thread Bolt	4	31	20245	Ignition Switch	1
13	W-113	5/16" Flat Washer	6	32	400077	Front Panel (Stainless Steel)	1
14	B-131	5/16"-18x1"	4	33	B-209	Bolt Stainless 1/4 x 20 x 3/4	8
15	W-118	5/16" Fender Washer	4	34	C-109	Tie Strap & Clip	2
16	400026	Seat Pan	1		400064	3 Gal. Cooler Kit (Optional)	
17	64100-S	Seat	1			1 Bracket, 1 Cooler, 2 Decal	
	176200	Armrests (1 Pair) (optional)			400063	3 Gal. Cooler Bracket (Optional)	
18	20275	Grey Carpet	1			Incl. 1 Decal Part # 800048	
19	N-106	5/16"-18 Wing Nut	2		400060	Igloo Cooler (Optional)	
						Incl. 1 Decal Part # 800050	

DIXIE CHOPPER

X2503, XK2503, XG2703 BODY



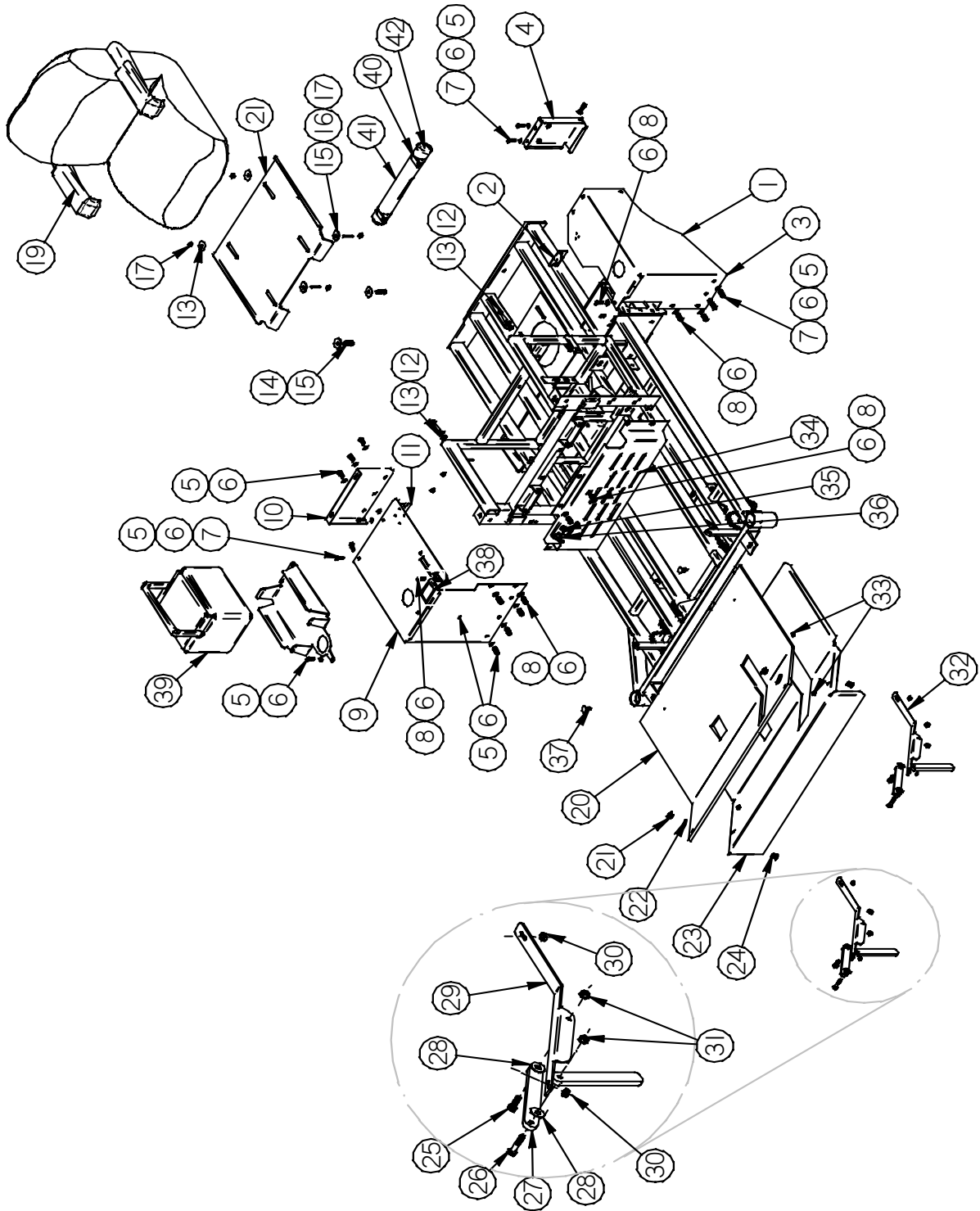
DIXIE CHOPPER

X2503, XK2503, XG2703 BODY

REF #	PART #	DESCRIPTION	QTY.	REF #	PART #	DESCRIPTION	QTY.
1	400001	Fender - 3Gal. Low Ride Left	1	24	67268	Floor Pan	1
2	400035	Left Fender Mounting Tab	1	25	B-104	5/16"-18x3/4" Carriage Bolt	2
3	400029	Left Front 3 Gal. Fuel Tank Support Bracket	1	26	B-131	5/16"-18x1" Grade 5 Bolt	2
4	400031	Left Rear 3 Gal. Fuel Tank Support Bracket	1	27	B-174	5/16"-18x1 1/4" Bolt	2
5	B-103	1/4"-20x1/2" Stainless Bolt	10	28	400007	Connecting Arm	2
6	W-153	1/4" Stainless Flat Washer	18	29	W-125	3/8" Plastic Washer	4
7	N-101	1/4"-20 Stainless Whiz Flange Nut	10	30	400006	Floor Pan Mounting Bracket (Right)	1
10	B-209	1/4"-20X3/4" Stainless Bolt	8	31	N-176	1/4"-20 Nylon Lock Nut	4
11	400030	Right Front 3 Gal. Fuel Support Tank Bracket	1	32	N-131	5/16"-18 Nylon Lock Nut	4
12	400002	Fender - 3Gal. Low Ride Right	1	33	400005	Floor Pan Mounting Bracket (Left)	1
13	400032	Right Rear 3Gal. Fuel Support Bracket	1	34	B-157	1/4"-20x1/2" Carriage Bolt	4
14	400036	Right Fender Mounting Tab	1	35	400077	Stainless Steel Front Panel	1
15	B-105	5/16"-18x1 3/4" Bolt	2	36	20248	Choke	1
16	W-113	5/16" Standard Flat Washer	6		600002	Kaw. Choke Cable	
17	B-131	5/16"-18x1" Grade 5 Bolt	4	37	20245	Ignition Switch	1
18	W-118	5/16" Fender Flat Washer	4	38	C-111	Plastic cap For Floor Pan	2
19	400026	Seat Pan	1	39	68247	Hourmeter Bracket	1
20	64100-S	Seat - Small White	1	40	900016	Docu-Tube (Clear Tube)	1
	176200	Armrest Kit F/Small White Seat (X2503, XK2503, XG2703 Armrest comes with Models.)	1	41	900017	Cap - Soft Vinyl (Red)	2
21	20275	Grey Carpet	1	42	C-109	Tie Strap & Clip (F/Tube)	2
22	N-106	5/16"-18 Wing Nut	2		400064	3 Gal. Cooler Kit (Optional)	
23	W-106	3/8" Fender Washer	2			1 Bracket, 1 Cooler, 2 Decal	
					400063	3 Gal. Cooler Bracket (Optional)	
						Incl. 1 Decal Part # 800048	
					400060	Igloo Cooler (Optional)	
						Incl. 1 Decal Part # 800050	

DIXIE CHOPPER

XWF2700, SP2800EFI, XT3000, XT3200 BODY



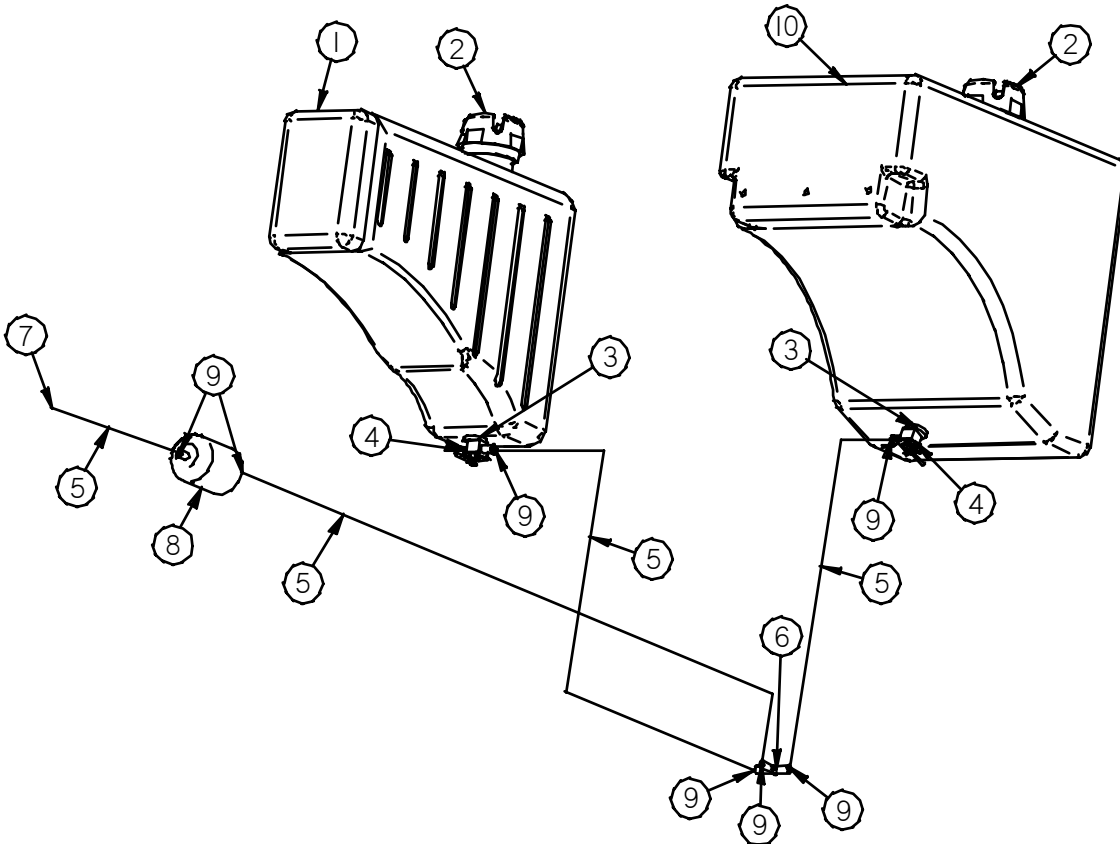
DIXIE CHOPPER

XWF2700, SP2800EFI, XT3000, XT3200 BODY

REF #	PART #	DESCRIPTION	QTY.
1	400001	Fender - 3Gal. Low Ride Left	1
2	400035	Left Fender Mounting Tab	1
3	400029	Left Front 3 Gal. Fuel Tank Support Bracket	1
4	400031	Left Rear 3 Gal. Fuel Tank Support Bracket	1
5	B-103	1/4" -20x1/2" Stainless Bolt	17
6	W-153	1/4" Stainless Flat Washer	25
7	N-101	1/4"-20 Stainless Whiz Flange Nut	9
8	B-209	1/4"-20X3/4" Stainless Bolt	8
9	400004	Fender - 7 Gal. Low Ride Right	1
10	400034	Right Rear 7Gal. Fuel Tank Support Bracket	1
11	400036	Right Fender Mounting Tab	1
12	B-105	5/16"-18x1.75" Bolt	2
13	W-113	5/16" Flat Washer	6
14	B-131	5/16"-18x1 Bolt	2
15	W-118	5/16"x1.5" Fender Washer	4
16	S-115	5/16"-18x1.75" Stud	2
17	N-103-W	5/16"-18 Whiz Flange Nut	4
18	400026	Seat Pan	1
19	40100-W	Seat (Complete)	1
	176801	Armrest Kit (L & R)	
	176803	Left Arm	
	176802	Right Arm	
	176201	Arm Pad (L or R)	
	306025	Back Cover	
	305839	Cushion Cover	
	177827PS	Spring Kit	
	400078	Gee- Ride - Seat Cover Back	
REF #	PART #	DESCRIPTION	QTY
20	20275	Grey Carpet	1
21	N-106	5/16"-18 Wing Nut	2
22	W-106	3/8" Fender Washer	2
23	67268	Floor Pan	1
24	B-104	5/16"-18x3/4" Carriage Bolt	2
25	B-131	5/16"-18x1" Bolt	2
26	B-174	5/16"-18x1 1/4" Bolt	2
27	400007	Connecting Arm	2
28	W-125	3/8" Plastic Washer	4
29	400006	Floor Pan Mounting Bracket (Right)	1
30	N-176	1/4"-20 Nylon Lock Nut	4
31	N-131	5/16"-18 Nylon Lock Nut	4
32	400005	Floor Pan Mounting Bracket (Left)	1
33	B-157	1/4"-20x1/2" Carriage Bolt	4
34	400077	Stainless Steel Front Panel	1
35	20248	Choke	1
36	20245	Ignition Switch	1
37	C-111	Cap - Floor Pan Christmas Tree	2
38	68247	Hourmeter Bracket	1
39	400056	7 Gal. Cooler Kit	
		Only XT (1) Bracket (1) Cooler (2) Decal	
	400057	7 Gal. Cooler Bracket (Optional)	
		Incl. (1) Decal Part # 800048	
	400060	Igloo Lunch Cooler (Optional)	
		Incl. (1) Decal Part # 800050	
40	C-109	Tie Strap & Clip	2
41	900016	Docu-Tube (Clear Tube)	1
42	900017	Cap - Soft Vinyl (Red)	2

DIXIE CHOPPER

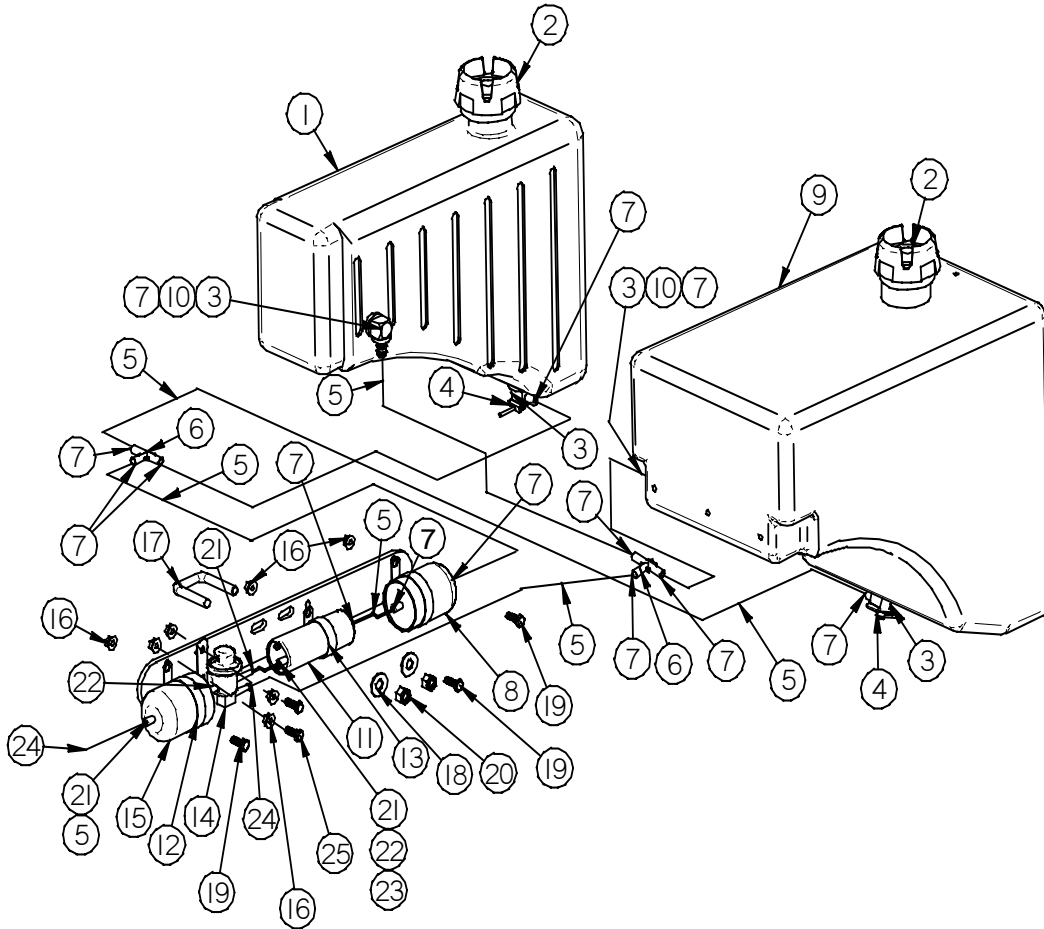
X2001, X2503, XK2503, XG2703, XWF2700, XT3000, XT3200 FUEL SYSTEM



REF #	PART #	DESCRIPTION	QTY.	REF #	PART #	DESCRIPTION	QTY.
1	40204-1	3 Gal. Fuel Tank (Except XWF2700, XT3000, XT3200)	2	6	65008	Gas Line "T" - 5/16"	1
2	600035	Fuel Cap	2	7	68231	Hose Clamp	1
	40117-1	Fuel Cap - Manual Vent w/Guage (Optional)		8	97392	Filter - Gas & Water Parker	1
3	40220	Fuel Tank Bushing	2	9	72012	Spring Clamp (Black)	7
4	400016	Valve - Fuel Tank Shut-Off	2	10	400015	7 Gal. Fuel Tank (XWF2700, XT3000, XT3200 Only)	1
5	97374	Gas Line - 5/16"	/ft.				

DIXIE CHOPPER

SP2800EFI FUEL SYSTEM

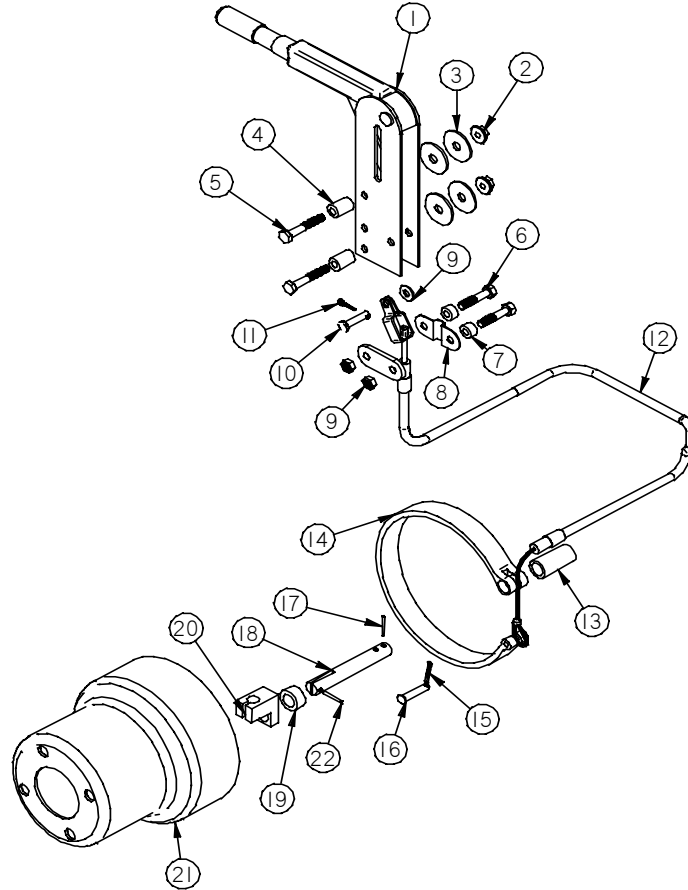


REF #	PART #	DESCRIPTION	QTY.
1	40204-1	3 Gal. Fuel Tank	1
2	600035	Fuel Cap	2
	40117-1	Fuel Cap - Manual Vent w/Guage (Optional)	
3	40220	Fuel Tank Bushing	4
4	400016	Valve - Fuel Tank Shut-Off	2
5	97374	Gas Line Hose - 5/16"	/ft.
6	65008	TEE - 5/16x 5/16 x 5/16	2
7	72012	Spring Clamp (Black)	13
8	97392	Filter - Gas & Water Parker	1
9	400015	7 Gal. Fuel Tank	1
10	72218	Fitting 1/8MP x 5/16 90'	2
11	NA	Kohler Part - (Pump)	1
12	C-108	Clamp	2

REF #	PART #	DESCRIPTION	QTY.
13	C-110	Clamp	1
14	NA	Kohler Part - (Regulator)	1
15	NA	Kohler Part - (Filter)	1
16	N-102	1/4"-20 Whiz Flange Nut	7
17	B-206	3/8"-16x1 3/8"w x 2"L U-Bolt	1
18	W-104	3/8" Flat Washer	2
19	B-102	1/4"-20x3/4" Bolt	3
20	N-107	3/8"-16 Nylon Lock Nut	2
21	600029	Clamp	6
22	500005	Ground Wire - (F/ Fuel P.)	1
23	N-182	#8-32 Hex Nut w/Star Lock Washer (For Fuel Pump)	2
24	68231	Clamp	2
25	B-172	1/4"-20x1" Bolt	2

DIXIE CHOPPER

X2001 SINGLE BRAKE ASSEMBLY

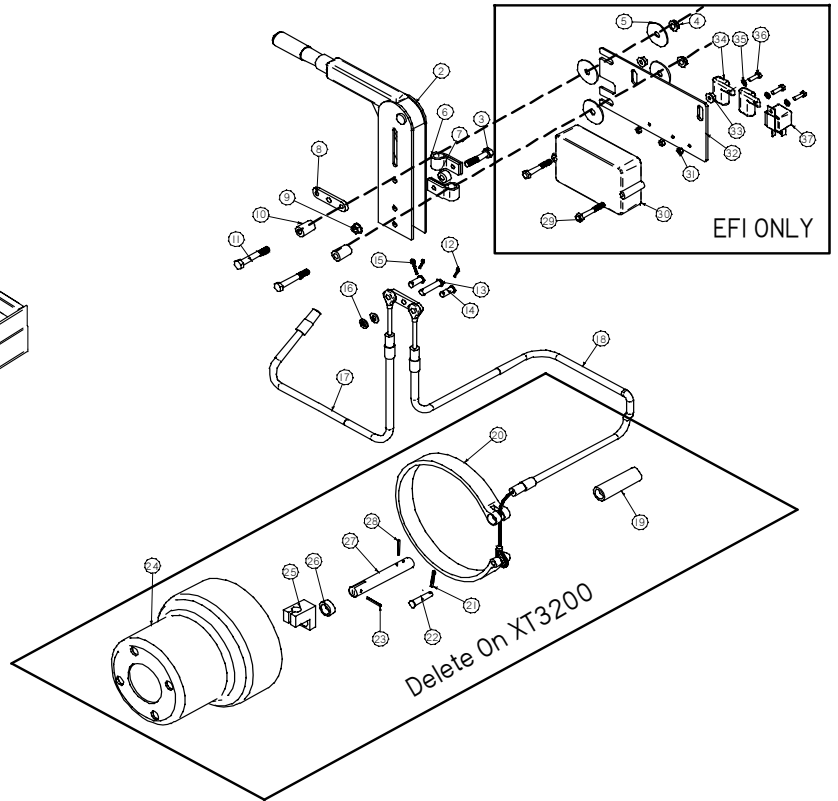
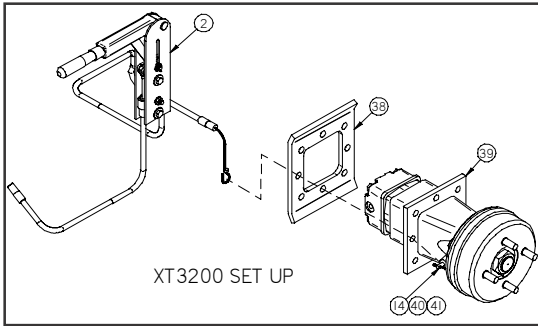
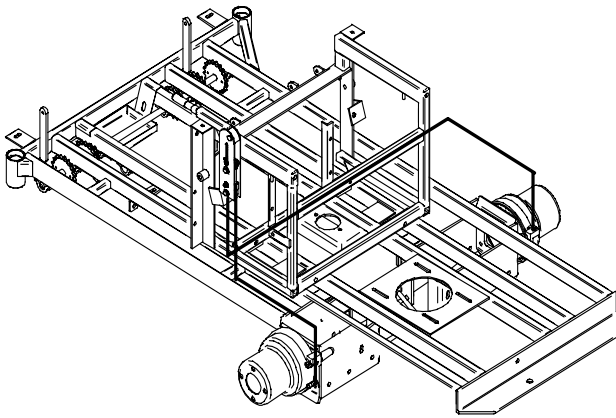


REF #	PART #	DESCRIPTION	QTY.
	89991210000	Brake Handle Assembly (Incl #1-#12)	
1	N/A	Brake Handle	1
2	N-134	5/16"-18 Large Flange Nut	2
3	W-106	3/8" Washer	4
4	65062	Spacer	2
5	B-156	5/16"-18x2" Bolt	2
6	N/A	Bolt	2
7	65063	Spacer	2
8	N/A	U-Clip	1
9	N/A	Nut	2
10	N/A	Pin	1
11	N/A	Hairpin Cotter	1

REF #	PART #	DESCRIPTION	QTY.
12	89991210001	Brake Cable Only F/Single Brake Assembly	1
13	65277	Bushing (Welded on Frame)	1
14	65244	Brake Band	1
15	P-108	3/32" x 1 1/2" Cotter Pin	1
16	P-102	3/8" x 1 1/4" Clevis Pin	1
17	P-118	3/16" x 1 1/2" Roll Pin	1
18	65243	Brake Shaft	1
19	65278 65284 30112	Spacer - Use #65278 and #30112 or 65284 to 65284 to <i>Place brake band fully onto brake drum.</i>	
20	991100025	Brake Cable Retainer	1
21	67266	Brake Drum	1
22	P-100	3/16" x 1" Roll Pin	1

DIXIE CHOPPER

X2503, XK2503, XWF2700, XG2703, SP2800EFI, XT3000, XT3200 DUAL BRAKE ASSEMBLY

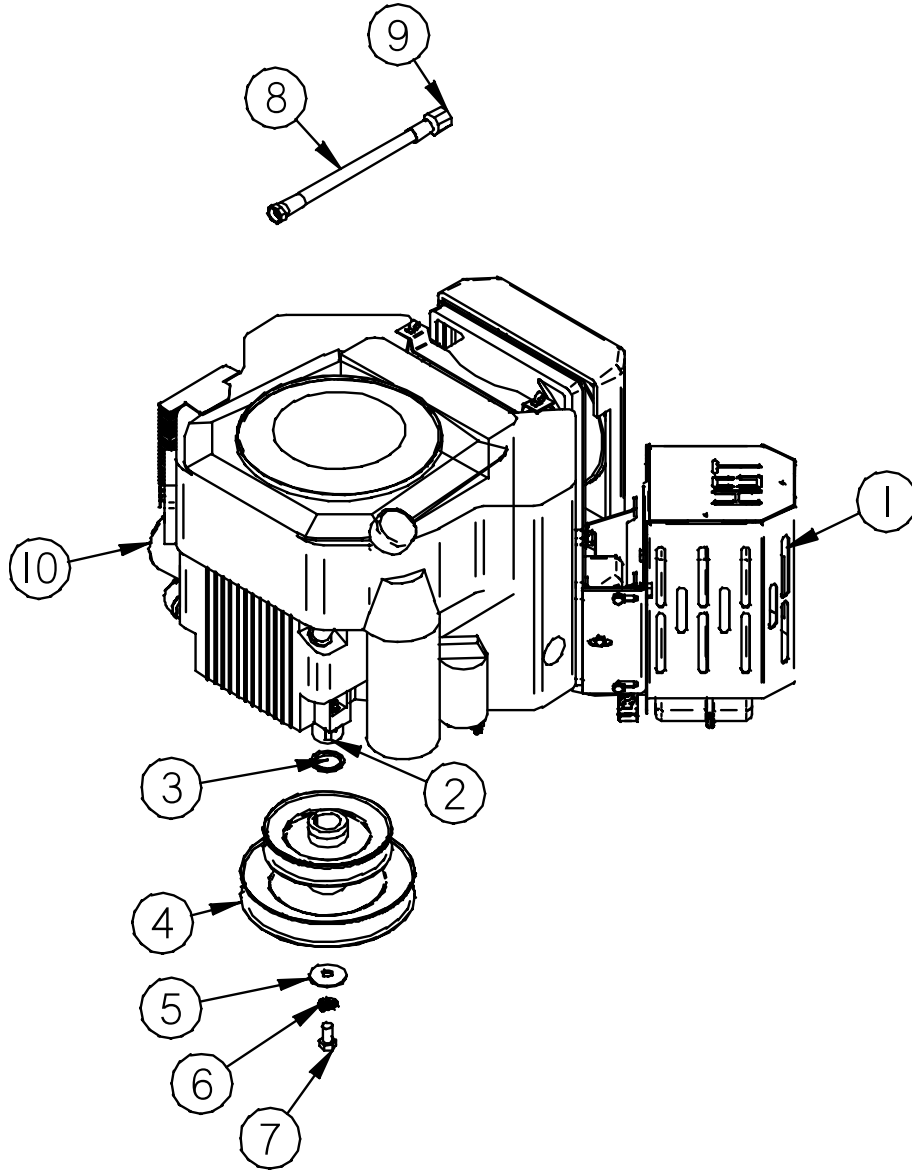


REF #	PART #	DESCRIPTION	QTY.
2	97094	Brake Handle Assembly (Inc. #2 - #18)	1
3	N/A	Bolt	1
4	N-134	Nut	2
5	W-106	Washer	4
6	65061	R Clip	2
7	65063	Spacer	1
8	65060	Pivot Plate	2
9	N/A	Nut	1
10	65062	Spacer	2
11	B-156	Bolt	2
12	N/A	Hairpin Cotter	2
13	P-129	Pin	1
14	P-112	Pin	2
15	N/A	Hairpin Cotter	1
16	W-102	Flat Washer	2
17	65247	Right Brake Cable (Long)	1
18	65246	Left Brake Cable (Short)	1
19	65277	Bushing (Welded on Frame)	2
20	65244	Brake Band	2
21	P-108	Hairpin Cotter	2
22	P-102	3/8" x 1 1/4" Clevis Pin	2

REF #	PART #	DESCRIPTION	QTY.
23	P-100	3/16" x 1" Roll Pin	2
24	67266	Brake Drum	2
25	991100025	Brake Cable Retainer	2
26	65278 65284 30112	Spacer Use # 65278 and #30112 or # 65284 to place brake band fully onto brake drum.	
27	65243	Brake Pin	2
28	P-118	3/16" x 1 1/2" Roll Pin	2
29	B-257	1/4"-20x1.75" Bolt	2
30	N/A	Kohler Part - EFI Module	1
31	N-179	M5-.8 Hex Nut	3
32	600009	EFI Module Mount	1
33	N-102	1/4"-20 Whiz Flange Nut	2
34	N/A	Fuse Holder	2
35	W-175	M5 Standard Flat Washer	3
36	B-258	M5-.8x16mm Bolt	3
37	N/A	Relay	1
38	200016	Wheel Motor Face Plate	
39	200018	18 Cu. In. Wheel Motor w/Brake	
40	W-102	1/4" Flat Washer	
41	P-117	1/8"x2" Cotter Pin	

DIXIE CHOPPER

X2001 ENGINE KOHLER 20 Hp

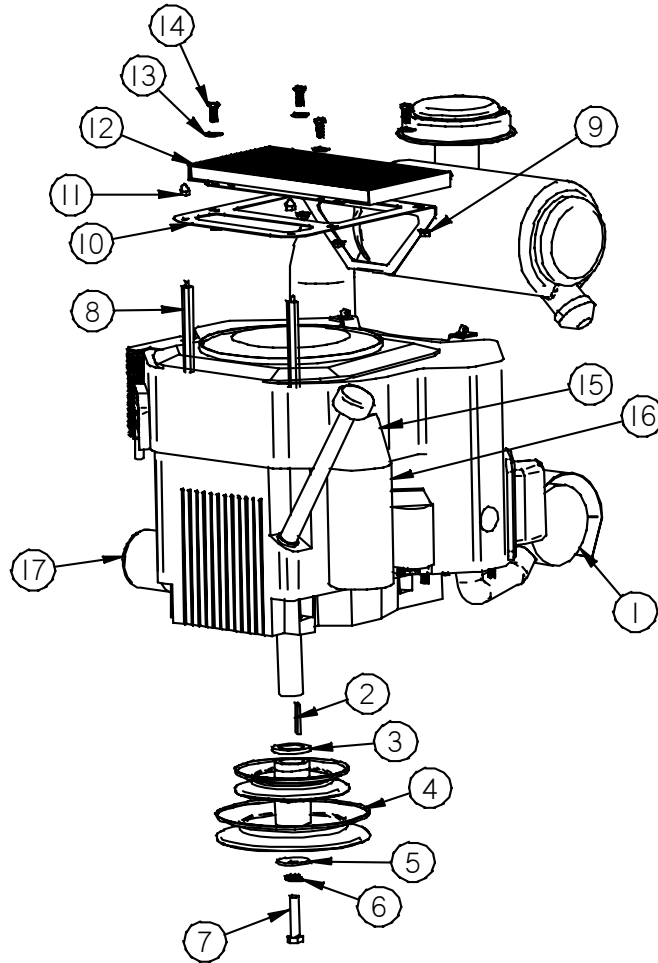


REF #	PART #	DESCRIPTION	QTY.
1	364001168218	Muffler Guard	1
2	K-100	1/4" Key	1
3	W-145	1-1/8" x 1-3/4" x 1/8" Washer	1
4	9907500X600D	Split Pulley 5" x 6"	1
5	W-144	7/16" Belleville Washer	1

REF #	PART #	DESCRIPTION	QTY.
6	W-108	7/16" Lock Washer	1
7	B-114	7/16"-20 x 3/4" Bolt	1
8	68230	Oil Drain Hose	1
9	10231	3/8" Steel Pipe Cap	1
10	12-050-01	Oil Filter	1

DIXIE CHOPPER

X2503 ENGINE - KOHLER 25 Hp

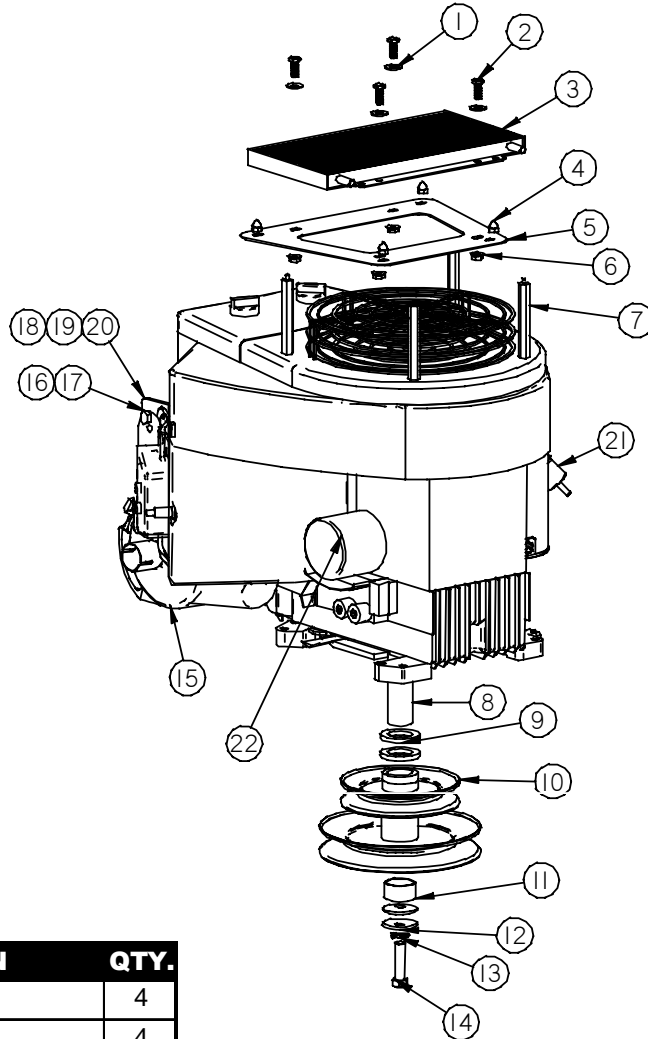


REF #	PART #	DESCRIPTION	QTY.
1	600011	Muffler - Hp Plus One - 25Hp	1
2	K-100	1/4" Key	1
3	W-145	1 1/8" x 1 3/4" x 1/8" Washer	1
4	9907500X600D	Split Pulley 5" x 6"	1
5	W-144	7/16" Belleville Washer	1
6	W-108	7/16" Lock Washer	1
7	B-114	7/16"-20x3/4" Bolt	1
8	600016	Bolt - 1/2" x 3 1/2" Hex Kohler Oil Cooler	2
9	N-102	1/4"-20 Whiz Flange Nut	4

REF #	PART #	DESCRIPTION	QTY.
10	400017	Bracket - Kohler Oil cooler	1
11	N-177	6mm x 1.0 Acorn Nut	2
12	60103-L	Oil Cooler	1
13	W-102	1/4" Flat Washer	4
14	B-101	1/4"-20x1/2" Bolt	4
15	C-113	Horn Clamp	1
16	C-112	Mercury Switch Clamp	1
17	277233	Oil Filter	

DIXIE CHOPPER

XK2503 ENGINE Kawasaki 25 Hp

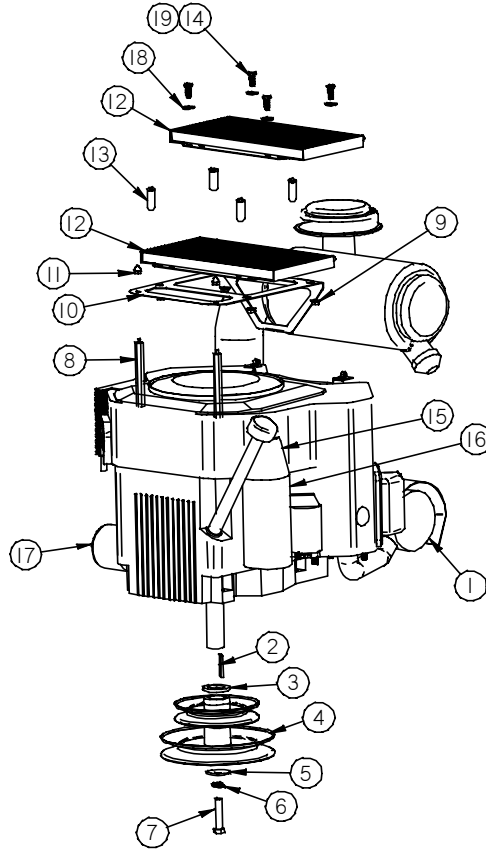


REF #	PART #	DESCRIPTION	QTY.
1	W-102	1/4" Flat Washer	4
2	B-101	1/4" - 20 x 1/2" Bolt	4
3	60103-L	Oil Cooler	1
4	N-177	6mm x 1.0 Acorn Nut	4
5	400024	Bracket - Kawasaki Oil Cooler	1
6	N-102	1/4"-20 Whiz Flange Nut	4
7	600017	Bolt - 1/2" x 4.25" Hex Kawasaki Oil Cooler	4
8	K-100	1/4" Key	1
9	W-145	1-1/8" x 1-3/4" x 1/8" Washer	2
10	9907500X600D	Split Pulley 5" x 6"	1
11	364000168203	Spacer - Kawasaki Crank	1
12	W-144	7/16" Belleville Washer	2
13	W-108	7/16" Lock Washer	1

REF #	PART #	DESCRIPTION	QTY.
14	B-164	7/16"-20 x 1.75" Bolt	1
15	600010	Assembly - Hp Plus One Muffler	1
	11060-7016	Gasket - Exhaust Manifold	2
16	600021	Bracket - Left Muffler Mount	1
17	600020	Bracket - Right Muffler Mount	1
18	B-107	5/16"-18x3/4" Bolt	2
19	W-113	5/16" Flat Washer	2
20	N-103-W	5/16" Whiz Flange Nut	2
21	49019-7001	Fuel Filter	
22	49065-2078	Oil Filter	

DIXIE CHOPPER

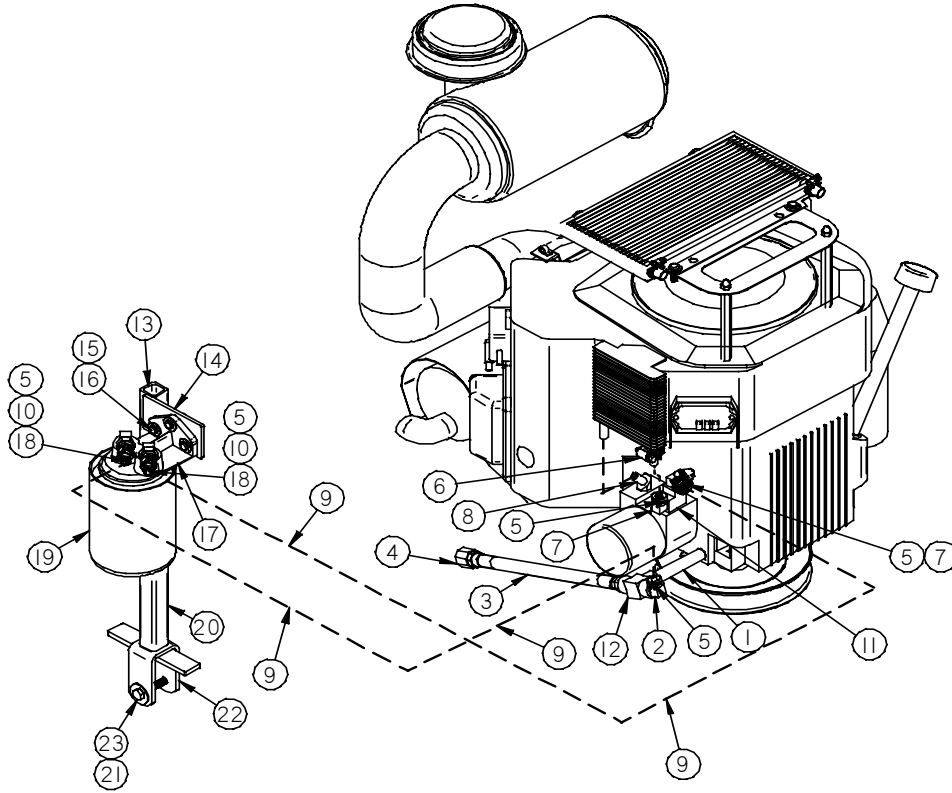
XWF2700, SP2800EFI ENGINE 27Hp, 28Hp KOHLER



REF #	PART #	DESCRIPTION	QTY.	REF #	PART #	DESCRIPTION	QTY.
1	600011	Muffler - Hp Plus One - 27Hp	1	10	400017	Bracket - Kohler Oil Cooler	1
	600018	Muffler - Hp Plus One - 28Hp	1		11	N-177	6mm x 1.0 Acorn Nut
2	K-100	1/4" Key	1	12		60103-L	Oil Cooler (27Hp)
3	W-145	1-1/8" x 1-3/4" x 1/8" Washer	1				Oil Cooler (28HP)
4	9907500X600D	Split Pulley 5" x 6"	1	13	200022	Spacer - F/ Oil Cooler (F/28Hp)	4
5	W-144	7/16" Belleville Washer	1	14	B-101	1/4" - 20 x 1/2" Bolt (27Hp)	4
6	W-108	7/16" Lock Washer	1	15	C-113	Horn Clamp	
7	B-114	7/16"-20 x .750" Bolt	1	16	C-112	Mercury Switch Clamp	
8	600016	Bolt - 1/2" x 4" Hex Kohler Oil Cooler	2	17	277233	Oil Filter	
				9	N-102	1/4"-20 Whiz Flange Nut	4
				18	W-102	1/4" Flat Washer	4
				19	B-267	1/4" - 20 X 2 1/4" Bolt (F/28HP)	4

DIXIE CHOPPER

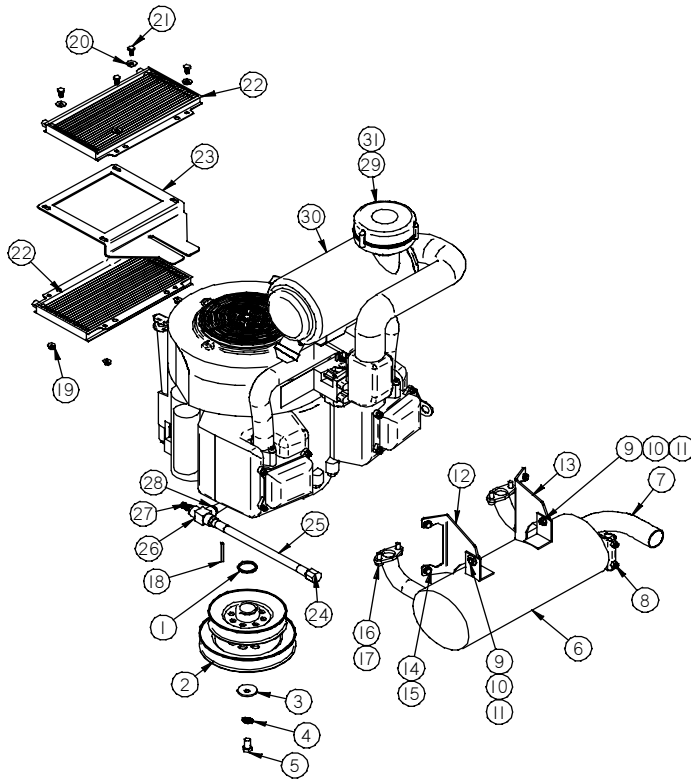
XWF2700, SP2800EFI KOHLER ENGINE OIL ROUTING



REF #	PART #	DESCRIPTION	QTY.	REF #	PART #	DESCRIPTION	QTY.
1	10230	3/8" Black Pipe Nipple 3" Long	1	12	60102	Black Pipe Tee	1
2	60125	3/8" Male Pipe 90 To 3/8" Barb	1	13	68142	Plastic Cap	1
3	68230	Oil Drain Hose	1	14	N-102	1/4"-20 Whiz Flange Nut	3
4	10231	3/8" Steel Pipe Cap	1	15	B-172	1/4"-20x1" Bolt	3
5	67013	3/8" Green Clamp	5	16	W-102	1/4" Washer	3
6	68231	# 4 Worm Clamp	1	17	60122	Amsoil Filter Head	1
7	67019	Hose Barb Brass (27Hp Machines) Kohler Fitting on inside Fitting (28Hp EFI Machines)	2	18	60113	1/8" x 3/8" 90 Degree Fitting	2
8	Kohler No	45 Deg. elb-1/4" mpx-3/8" barb		19	60119	Amsoil Filter	1
9	60109	3/8" Oil Line	/ft.	20	400025	Amsoil Filter Mount	1
10	60116	3/8" Swivel to 3/8" Barb	2	21	B-165	3/8"-16x2" Bolt	1
11	67022	1/4" Street Tee	1	22	N-107	3/8"-16 Nyloc Nut	1
				23	W-104	3/8" Standard Flat Washer	1

DIXIE CHOPPER

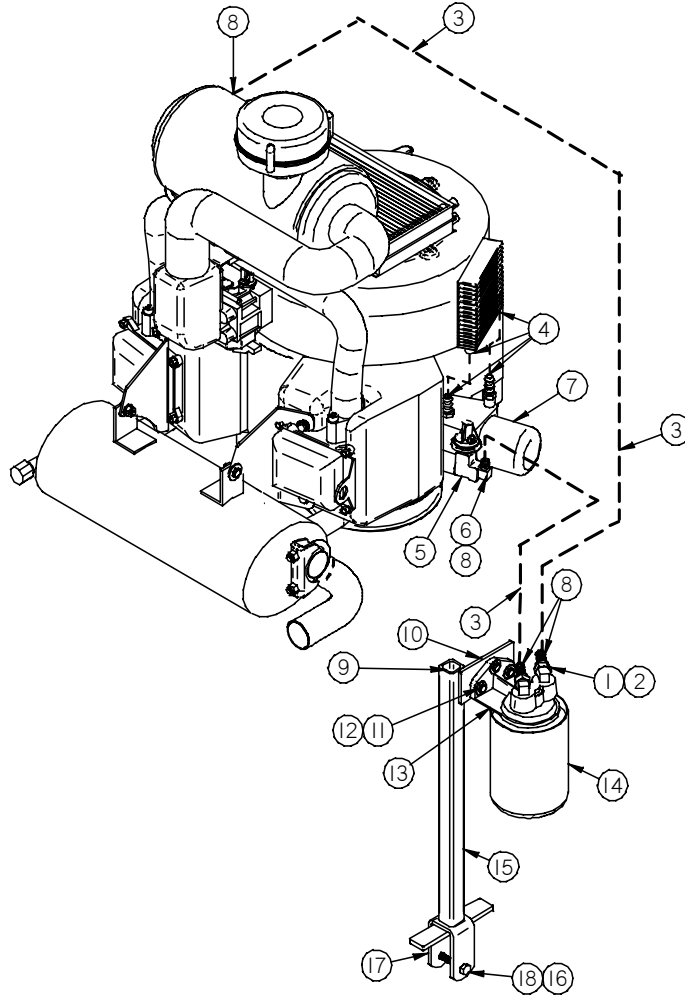
XT3000, XT3200, XG2703 ENGINE - 27, 30, 32Hp GENERAC



REF #	PART #	DESCRIPTION	QTY.	REF #	PART #	DESCRIPTION	QTY.
	600038	30Hp Generac Engine		14	W-179	M6 Lock Washer	4
	600068	32Hp Generac Engine		15	B-269	M6-16x1.00 Bolt	4
	600069	27Hp Generac Engine		16	045761A	Stud - M8 - 1.25 x 10MM	4
1	W-178	1 1/4" ID x 1 7/8" OD x 1/8" Thick (30Hp) (32Hp)	4	17	052858	Nut - Lock Flange M8 - 1.25	4
	W-145	1 1/8" ID x 1 3/4" OD Flat Washer (27Hp)	1	18	K-100	1/4" Key	1
2	600033	Pulley - 5x6x1 1/4" Engine (XT3000, XT3200)	1	19	N-102	1/4"-20 Whiz Flange Nut	4
	9907500X600D	Pulley - 5x6x1 1/8" Engine (XG2700 ONLY)		20	W-102	1/4" Washer	4
3	W-144	7/16" Stainless Belleville Washer	1	21	B-101	1/4"-20x1/2" Bolt	4
4	W-108	7/16" Lock Washer	1	22	60103-L	Oil Cooler (XT3000, XT3200) Oil Cooler (XG2700)	2 1
5	B-114	7/16"-20x3/4" Bolt (27Hp, 32Hp)	1	23	400105	Bracket - Oil Cooler Generac	1
	B-164	7/16"-20x1 3/4" Bolt (30Hp)		24	10231	3/8" Steel Pipe Cap	1
6	600061	Muffler - Generac (Incl. Ref. # 7-8)	1	25	68230	Oil Drain Hose Assembly	1
	OC4138	Gasket - 30Hp Generac Muffler	2	26	60102	3/8" Black Pipe Tee	1
7	600059	Tailpipe - Generac Muffler	1	27	87113	3/8" Male Pipe 3/8" Barb - Straight	1
8	600060	Clamp - Generac Muffler Tailpipe	1	28	72230	3/8" Black Pipe Nipple 3" Long	1
9	B-107	5/16"-18x3/4" Bolt	2	29	90115	Turbo Pre-cleaner	1
10	W-113	5/16" Flat Washer	2	30	0E3655	Canister - Donaldson Air Cleaner	
11	N-103-W	5/16"-18 Whiz Flange Nut	2		0E3557	Primary Element Donaldson Air Cleaner	
12	600057	Bracket - LH Muffler	1		0E3656	Secondary Element Donaldson Air Cleaner	
13	600058	Bracket - RH Muffler	1	31	90125	Clamp	1

DIXIE CHOPPER

XT3000, XT3200, XG2703 GENERAC ENGINE OIL ROUTING



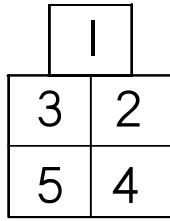
REF #	PART #	DESCRIPTION	QTY.
1	60113	1/8" x 3/8" 90Deg. Fitting	2
2	60116	3/8" Swivel to 3/8" Barb	2
3	60109	3/8" Line	/ft.
4	68231	#4 Worm Clamps	4
5	67022	1/4" Street Tee	1
6	67019	Hose Barb Brass	1
7	070185	Oil Filter	
8	67013	Green Clamps	4
9	68142	Plastic Plug 1x1	1
10	N-102	1/4"-20 Whiz Flange Nut	3
11	B-172	1/4"-20x1" Bolt	3

REF #	PART #	DESCRIPTION	QTY.
12	W-102	1/4" Flat Washer	3
13	60112	Amsoil Filter Head	1
14	60122	Amsoil Filter	1
15	400025	Amsoil Filter Mount	1
16	B-165	3/8"-16x2" Bolt	1
17	N-107	3/8"-16 Nyloc Nut	1
18	W-104	3/8" Standard Flat Washer	1
	0D6313	Fuel Filter	
	NGK-ZFR4F-11	Generac Spark Plug	
	0E4271	Starter	

DIXIE CHOPPER

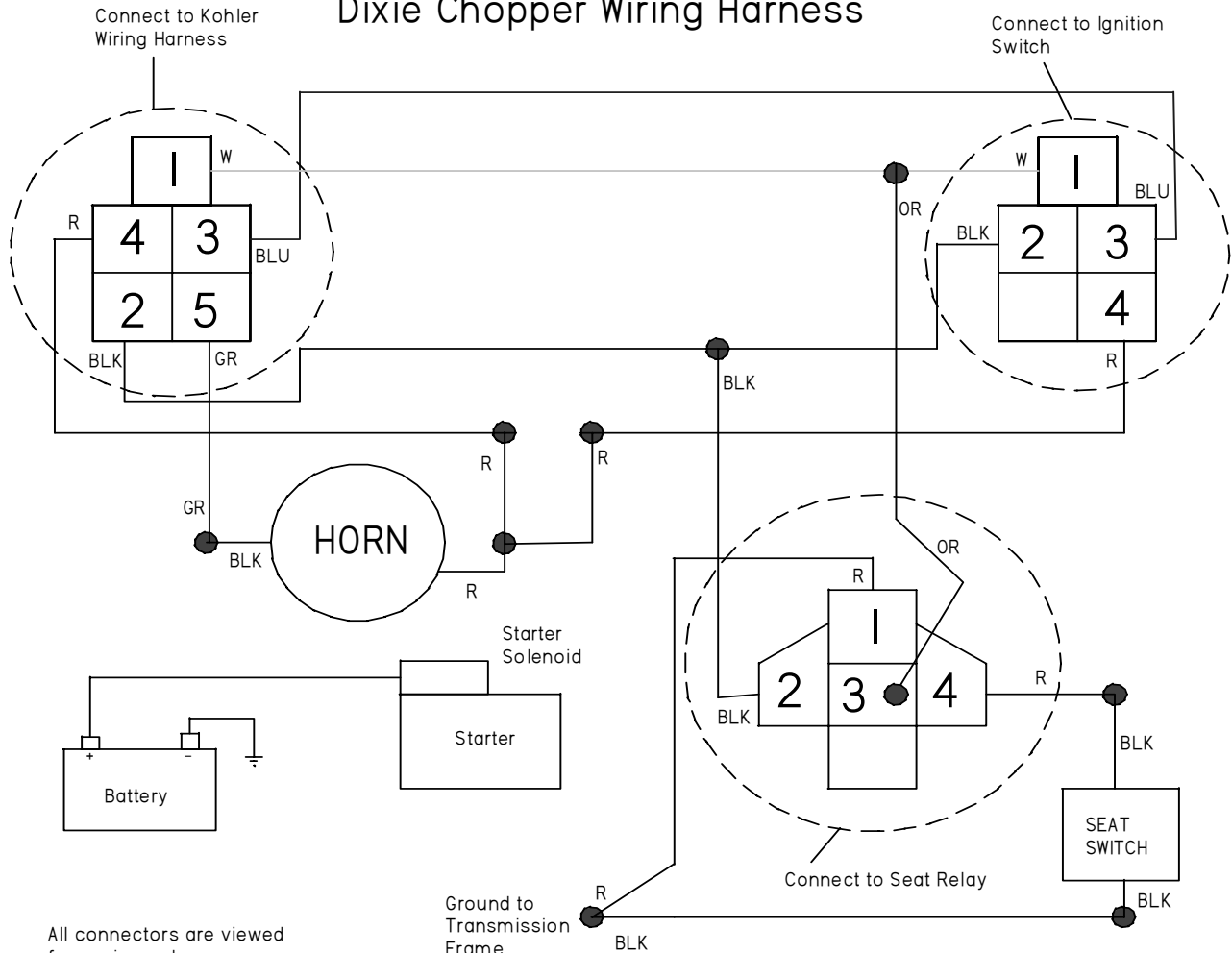
KOHLER ELECTRICAL DIAGRAM

Kohler Wiring Harness



1. White (kill wire)
2. Red (charge wire)
3. Blue (start wire)
4. Fused wire (to hot post on starter)
5. Green (from oil sending unit)

Dixie Chopper Wiring Harness



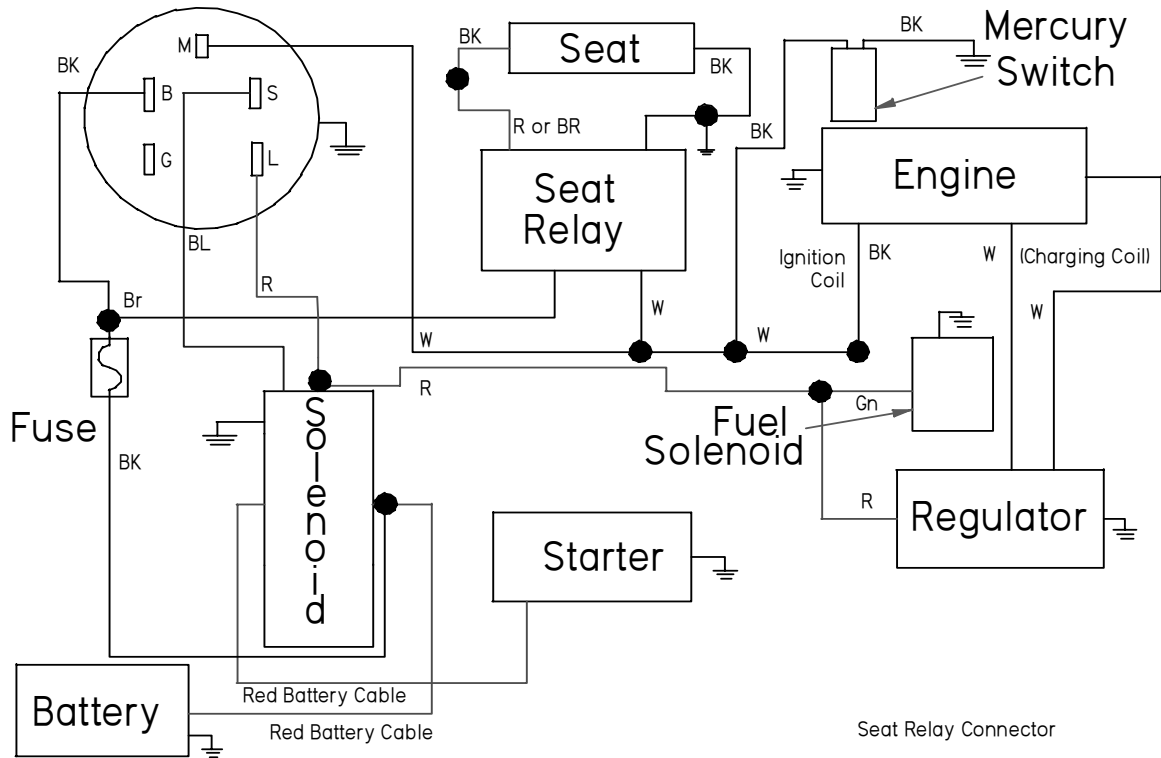
All connectors are viewed from wire end.

REF #	PART #	DESCRIPTION	QTY.
1	65522	Kohler Wiring Harness	1
2	20245	Ignition Switch	1
3	20246-T	Hour Meter/Tach	1
4	68247	Tach Bracket	1
5	N/A	Battery	1
6	20228	Battery Strap	1
7	400065	Standard Battery Box	1
8	20225-B	Red Rubber Boot	1
9	20227-72	Battery Cable Positive (72")	1

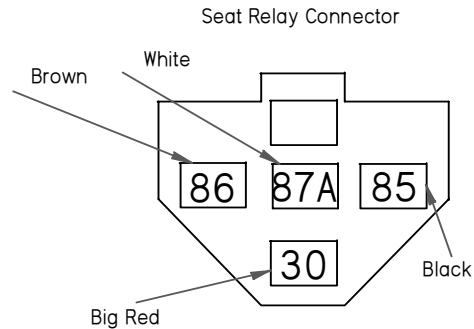
REF #	PART #	DESCRIPTION	QTY.
10	20226-B	Battery Cable Ground (12")	1
11	40229	Mercury Switch	1
12	C-112	Clamp for Mercury Switch	1
13	65510	Seat Relay	1
14	97191	Seat Relay Pigtail	1
15	65509	Fuse	1
16	20254	Fuse Holder	1
17	60117	Low Oil Horn (Optional)	
	C-113	Horn Clamp	

DIXIE CHOPPER

KAWASAKI ELECTRICAL DIAGRAM



Abbr.	Color
W	White
R	Red
BK	Black
BL	Blue
OR	Orange

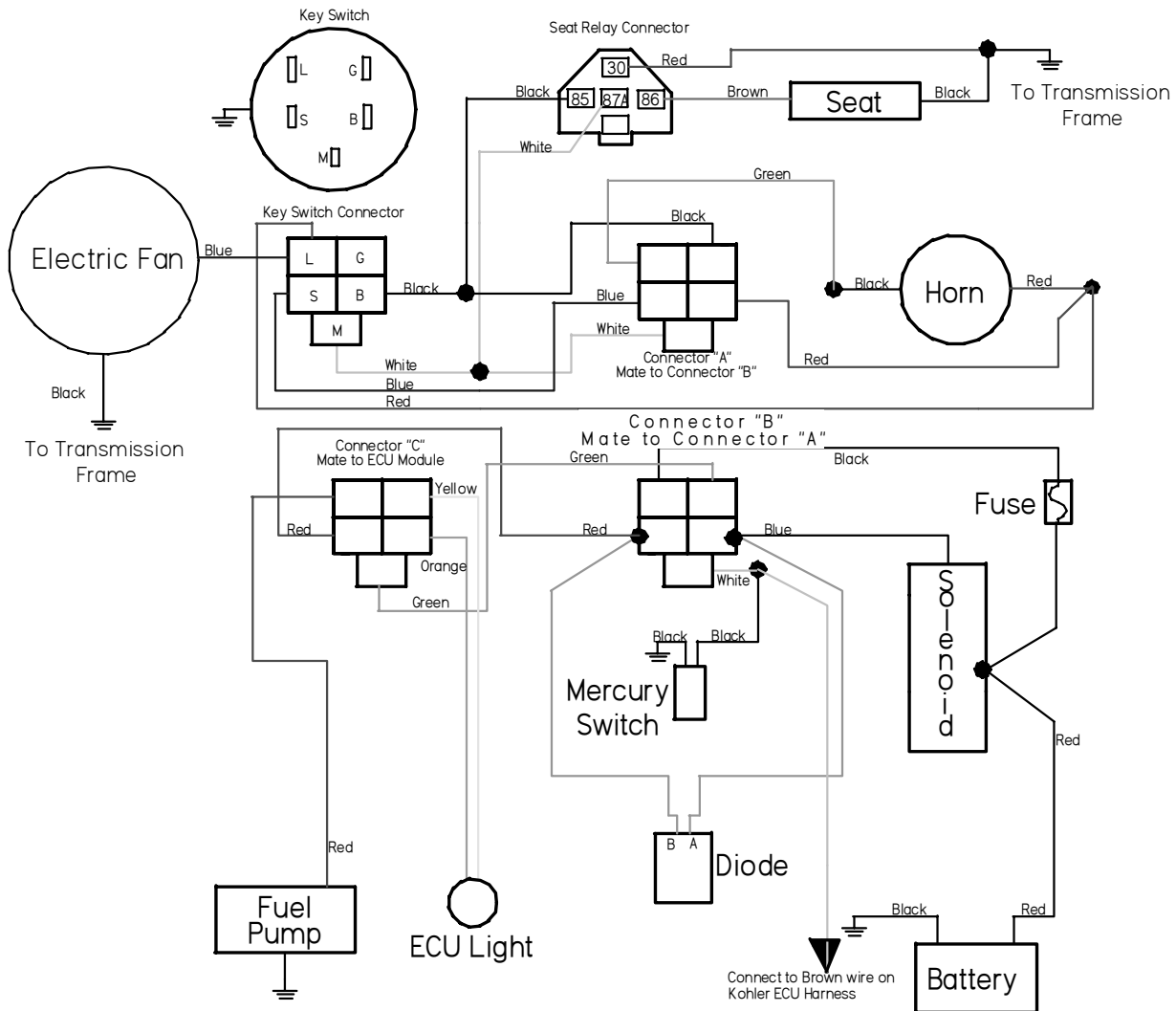


REF #	PART #	DESCRIPTION	QTY.	REF #	PART #	DESCRIPTION	QTY.
1	20245	Keyswitch	1	10	20254	Fuse Holder	1
2	64100-S	Seat	1	11	20226-R	16" Battery Cable	1
3	600000	25 Hp Engine	1	12	20227-72	72" Battery Cable	1
4	21066-7003	Regulator	1	13	364000168205	Wiring Harness	1
5	N/A	Battery	1	14	20226-B	Ground Cable	1
6	21163-7001	Starter	1	15	N/A	Fuel Solenoid	1
7	20253	Solenoid	1	16	40229	Mercury Switch	1
8	65510	Seat Relay	1	17	20246-T	Tiny - Tach	1
9	65509	Fuse	1	18	68247	Tach Bracket	1

DIXIE CHOPPER

KOHLER 28Hp EFI

ELECTRICAL DIAGRAM



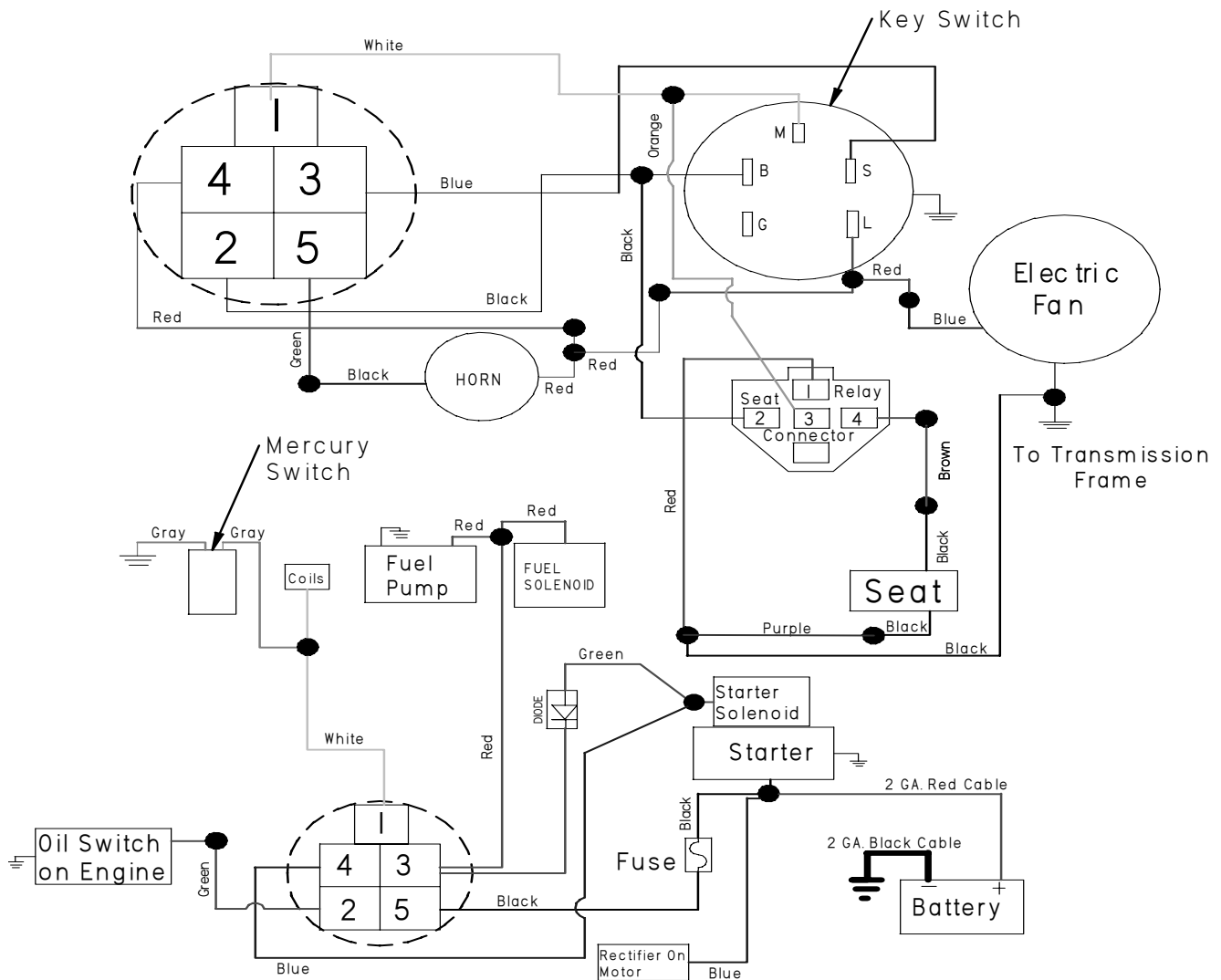
REF #	PART #	DESCRIPTION	QTY.
1	500002	Kohler 28Hp EFI Wiring Harness	1
2	20245	Ignition Switch	1
3	20246-T	Hour Meter/Tach	1
4	68247	Tach Bracket	1
5	N/A	Battery	1
6	20228	Battery Strap	1
7	400065	Standard Battery Box	1
8	20225-B	Red Rubber Boot	1
9	20227-72	Battery Cable Positive (72")	1
10	20226-B	Battery Cable Ground (12")	1

REF #	PART #	DESCRIPTION	QTY.
11	40229	Mercury Switch	1
12	C-112	Clamp for Mercury Switch	1
13	65510	Seat Relay	1
14	97191	Seat Relay Pigtail	1
15	65509	Fuse	1
16	20254	Fuse Holder	1
17	60117	Low Oil Horn (Optional)	1
	C-113	Horn Clamp	1
18	500003	ECO Light	1
19	500005	Ground Wire	1

DIXIE CHOPPER

30Hp, 32Hp & 27Hp

GENERAC ELECTRICAL DIAGRAM



REF #	PART #	DESCRIPTION	QTY.	REF #	PART #	DESCRIPTION	QTY.
1	500004	Generac Wiring Harness	1	10	20225-B	Battery Boot (XG2703)	1
2	20245	Ignition Switch	1	97327		Battery Boot (XT3000,XT3200)	1
3	20246-T	Hour Meter/Tach	1	11	40229	Mercury Switch	1
4	68247	Tach Bracket	1	12	C-112	Clamp For Mercury Switch	1
5	N/A	Battery	1	13	65510	Seat Relay	1
6	97145	Diesel Battery Tray (XT3000,XT3200)	1	14	97191	Seat Relay Pigtail	1
	400065	Standard Battery Tray (XG2703)	1	15	65509	Fuse	1
7	20228	Battery Strap	1	16	20254	Fuse Holder	1
8	97323	Battery 2Ga. Cable Positive 80" (XT3000,XT3200)	1	17	60117	Low Oil Horn	1
	20227-72	Battery Cable Positive 72" (XG2703)	1		C-113	Horn Clamp	1
9	500006	Battery Cable Ground 80" (XT3200)	1	18	200043	Electrical Fan (XT3000,XT3200 Only)	1
	20226-B	Battery Cable Ground 12" (XG2703)	1				

DIXIE CHOPPER

NOTES

DIXIE CHOPPER

6302 E. County Road 100 North
Coatesville, IN. 46121
Phone 1-765-CHOPPER
www.dixiechopper.com

Dixie Chopper, Magic Circle, and the Magic Circle Atom Logo are all trademarks of Magic Circle Corporation and may not be reproduced without permission.

Printed In USA

Specifications and instructions subject to change without notice.

Print Date 1/04