



Serial Numbers
9090176
and Higher



Model # _____

Engine Model # _____

Serial # _____

Engine Serial # _____

Date Purchased _____

Engine Spec. # _____

2009 IRON EAGLE REV. 2 PARTS MANUAL

DIXIE CHOPPER

Congratulations on your purchase of a **DIXIE CHOPPER** lawn mower. We believe you have exercised excellent judgement, and are most appreciative of your patronage.

**Your DIXIE CHOPPER Dealer is your #1 SOURCE
for
DIXIE CHOPPER parts and service !**

Please call or visit your nearest authorized Dixie Chopper
Dealer for
additional service information.



AUTHORIZED DEALER

Let us know how you are getting along with your new CHOPPER!

www.dixiechopper.com

Dixie Chopper reserves the right to make changes or add improvements to its products at any time without incurring any obligation to make such changes to products previously manufactured. Neither Dixie Chopper, nor its dealers, accept responsibility for variations which may be evident in the actual specifications of its products and the statements and descriptions contained in this publication.

DIXIE CHOPPER[®]

CONTENTS

QUICK REFERENCE PARTS	1
DECALS	2
FRAME	5
WHEELS AND TIRES	6
DECK	7
SPINDLES	13
OCDC	14
DECK LIFT	15
DRIVE FRAME	16
DRIVE FRAME COMPONENTS	17
HYDRAULIC ROUTING	18
FUEL	19
PARKING BRAKE	20
BODY	21
ENGINE	23
ELECTRICAL DIAGRAM	24
SPECSIFICATIONS	25
NOTES	26

DIXIE CHOPPER

IRON EAGLE MODEL'S

QUICK REFERENCE PARTS

MODEL	2344	2350	2560
Engine	Kohler 23Hp	Kohler 23Hp	Kohler 25Hp
Deck	44"	50"	60"
Rear Tires			
Rear Rims			
Rear Tire/Rim Complete (Right/Left)	400296	400296	400296
Front Tire/Rim Complete	400253	400253	400253
Belts			
Engine-Pump Raw	2006A62R	2006A62R	2006A62R
Clutch-Deck Belt	2008B100R	2008B97R	2008B100R
Deck Belt	2008B101R	2006B112R	2006B128R
Filters			
Fuel Filter	25-050-22	25-050-22	25-050-22
Kohler Air Filter	32-083-03	32-083-03	32-083-03
Kohler Foam Filter			
Oil Filter	12-050-01	12-050-01	12-050-01
Blades			
X-Blade	30227-50X	30227-52X	30227-62X
Various Parts			
Fiber Washer	W-101	W-101	W-101
Deck Roller (Ctr)	300365	300365	300365
Choke Control	600072	600072	600072
Throttle Assembly	400297	400297	400297
Fuel Cap	400314	400314	400314
Mesh Litter Bag (Optional)	BAG-101	BAG-101	BAG-101

DIXIE CHOPPER

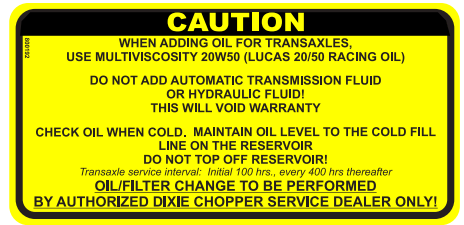
DECALS



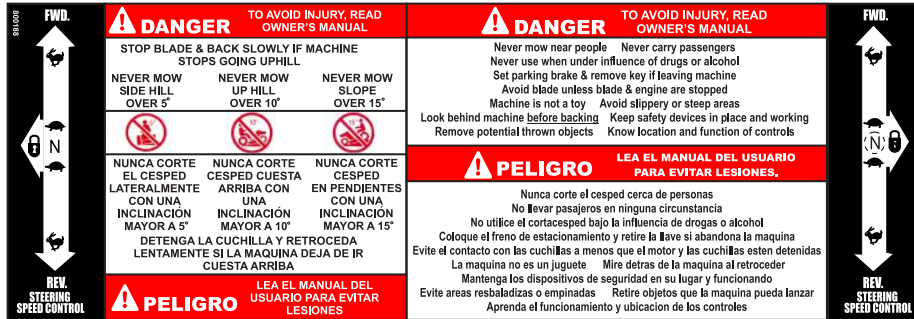
1



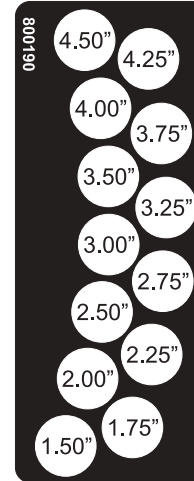
2



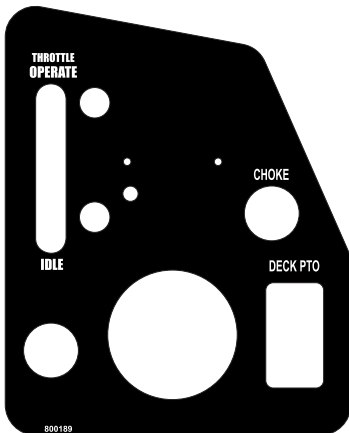
3



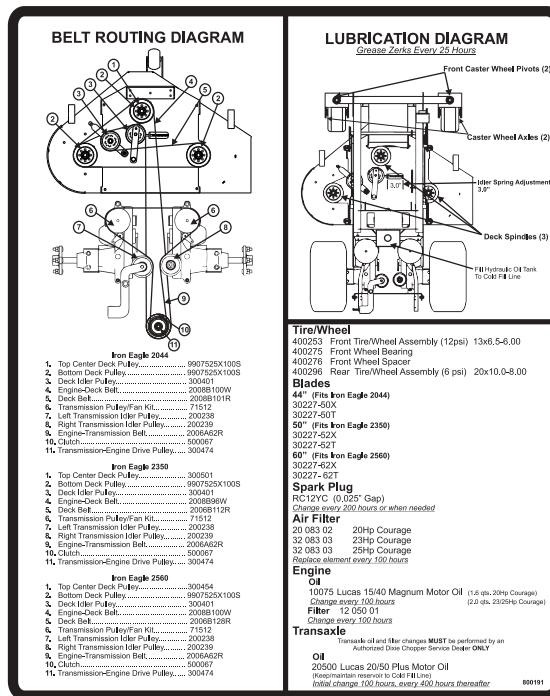
4



5



6



7



8



9



10

REF	PART#	DESCRIPTION	Qty
1	800018	Decal - Document Tube	1
2	800060	Decal - Deck Spindle Lucas Grease	1
3	800192	Decal - Caution Oil	1
4	800188	Decal - Safety Floor Pan	1
5	800190	Decal - Height Adjustment Deck	1

REF	PART#	DESCRIPTION	Qty
6	800189	Decal - Decal Panel Control	1
7	800191	Decal - Route Belt	1
8	800196	Decal - Deck 44"	2
9	800197	Decal - Deck 50"	2
10	800198	Decal - Deck 60"	2

DIXIE CHOPPER[®]

DECALS (CONT'D)



11



12



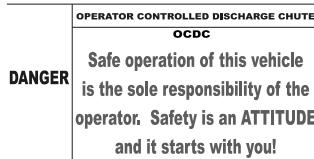
13



14



15

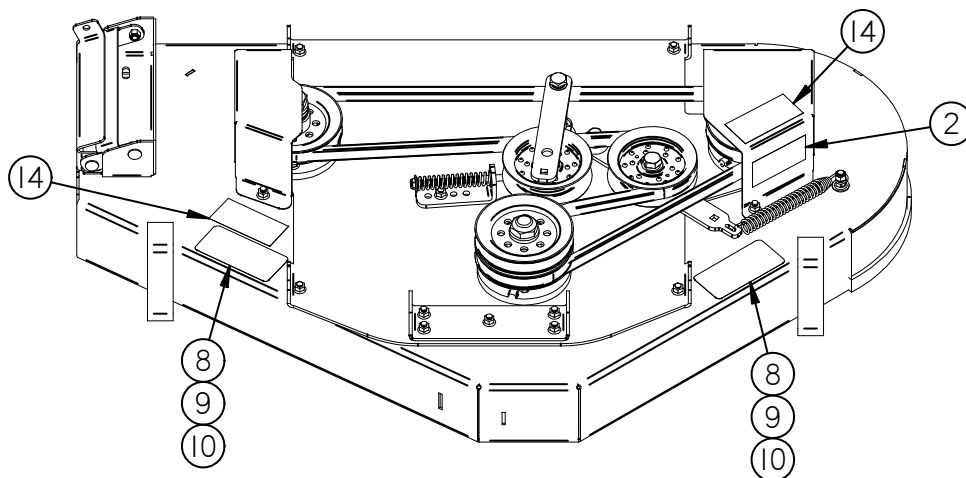
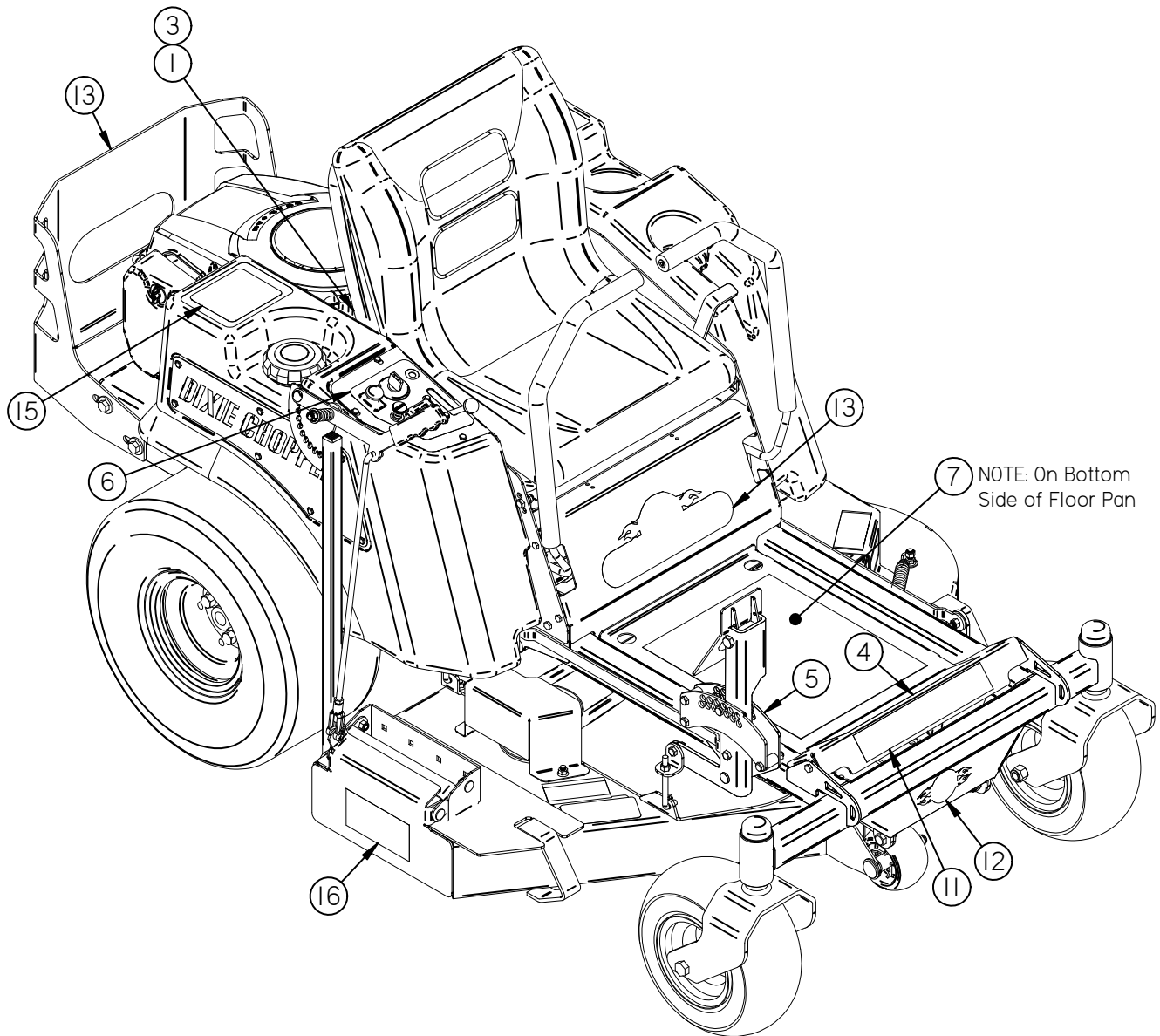


16

REF#	PART#	DESCRIPTION	Qty
11	800204	Decal - Pan Floor Front	1
12	800199	Decal - Pivot Plate	1
13	800195	Decal - Front Panel/Rear Guard	2
14	30229	Decal - Danger Deck	2
15	800201	Decal - Caution Fuel	1
16	97072	Decal - Safety OCDC	1

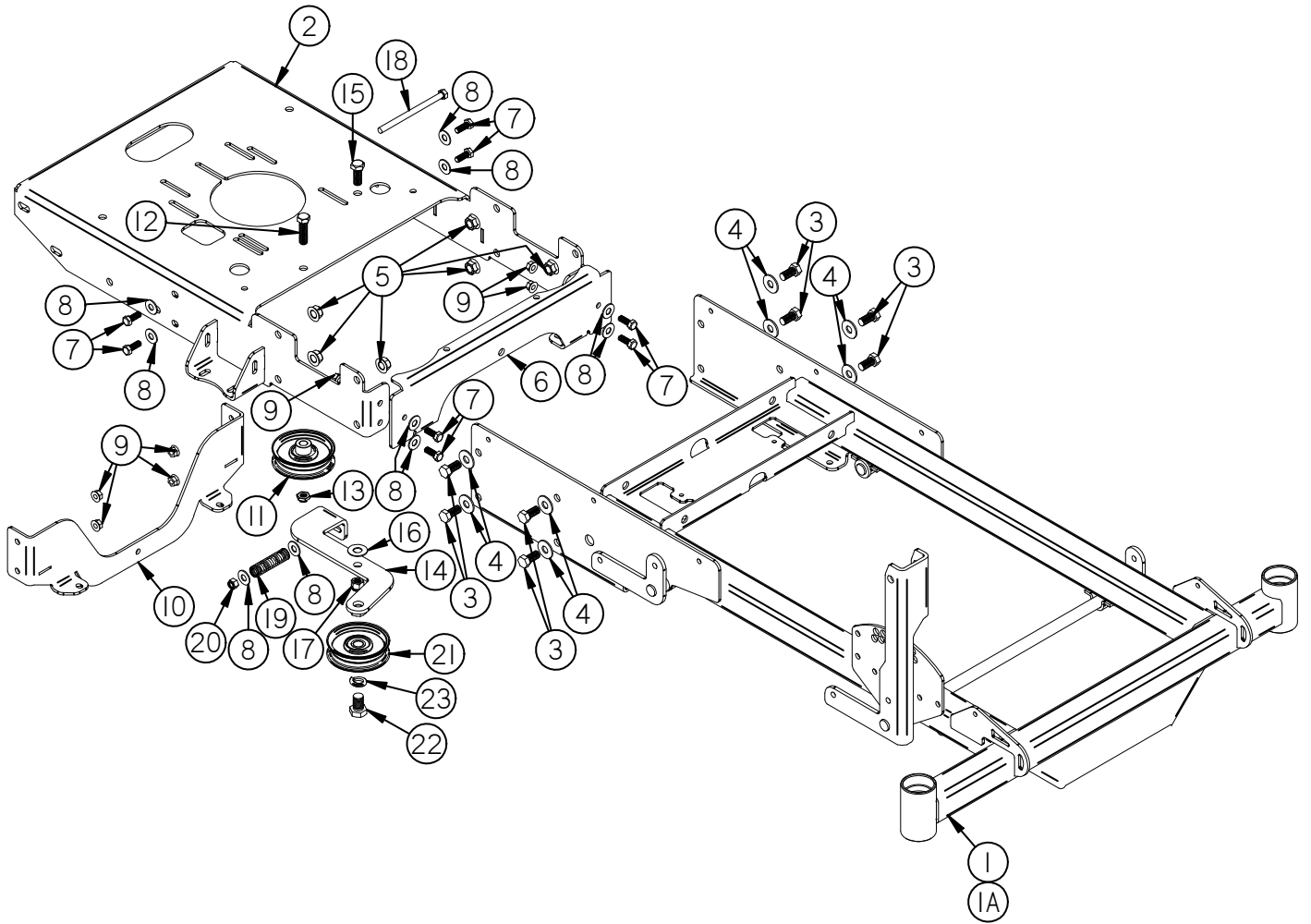
DIXIE CHOPPER

DECAL PLACEMENT



DIXIE CHOPPER

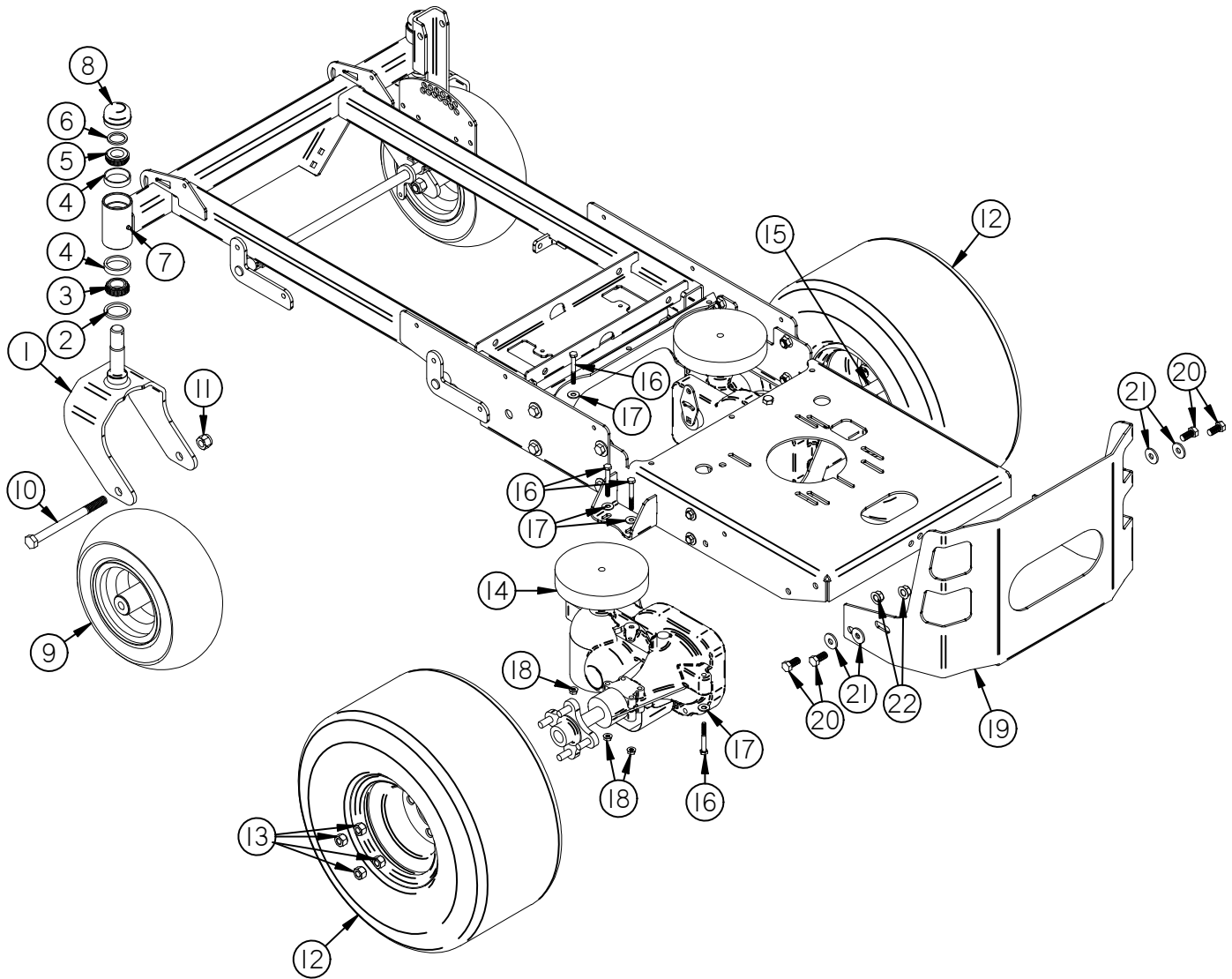
IRON EAGLE FRAME ASSEMBLY



REF	PART#	DESCRIPTION	Qty	REF	PART#	DESCRIPTION	Qty
1	100219	Weldment - Frame IE Front 44"/50"	1	12	B-139	Bolt - 1/2"-13 X 1-3/4"	1
1A	100223	Weldment - Frame IE Front 60"	1	13	N-126	Nut - 1/2"-13 Nyloc Jam	1
2	100218	Weldment - Frame IE Rear	1	14	200243	Weldment - Idler Pump IE	1
3	B-138	Bolt - 1/2"-13 X 1"	8	15	B-117	Bolt - 1/2"-13 X 1-1/4"	1
4	W-109	Washer - 1/2" Flat	8	16	W-171	Washer - 1/2" Teflon Washer	1
5	N-157	Nut - 1/2"-13 Whiz Flange	8	17	N-143	Nut - 1/2"-13 Nyloc	1
6	200241	Mount - Transmission IE Front	1	18	B-314	Bolt - 3/8"-16 X 5-1/2" Full Thread	1
7	B-108	Bolt - 3/8"-16 X 1"	8	19	68280	Spring	1
8	W-104	Washer - 3/8" Flat	10	20	N-107	Nut - 3/8"-16 Nyloc	1
9	N-108	Nut - 3/8"-16 Whiz Flange	8	21	200239	Pulley - Idler Flat 3.75 W/Center	1
10	200242	Mount - Transmission IE Rear	1	22	B-120	Bolt - 5/8"-11 X 1"	1
11	200238	Pulley - Idler Flat 3.75 No center	1	23	W-111	Washer - 5/8" Lock	1

DIXIE CHOPPER

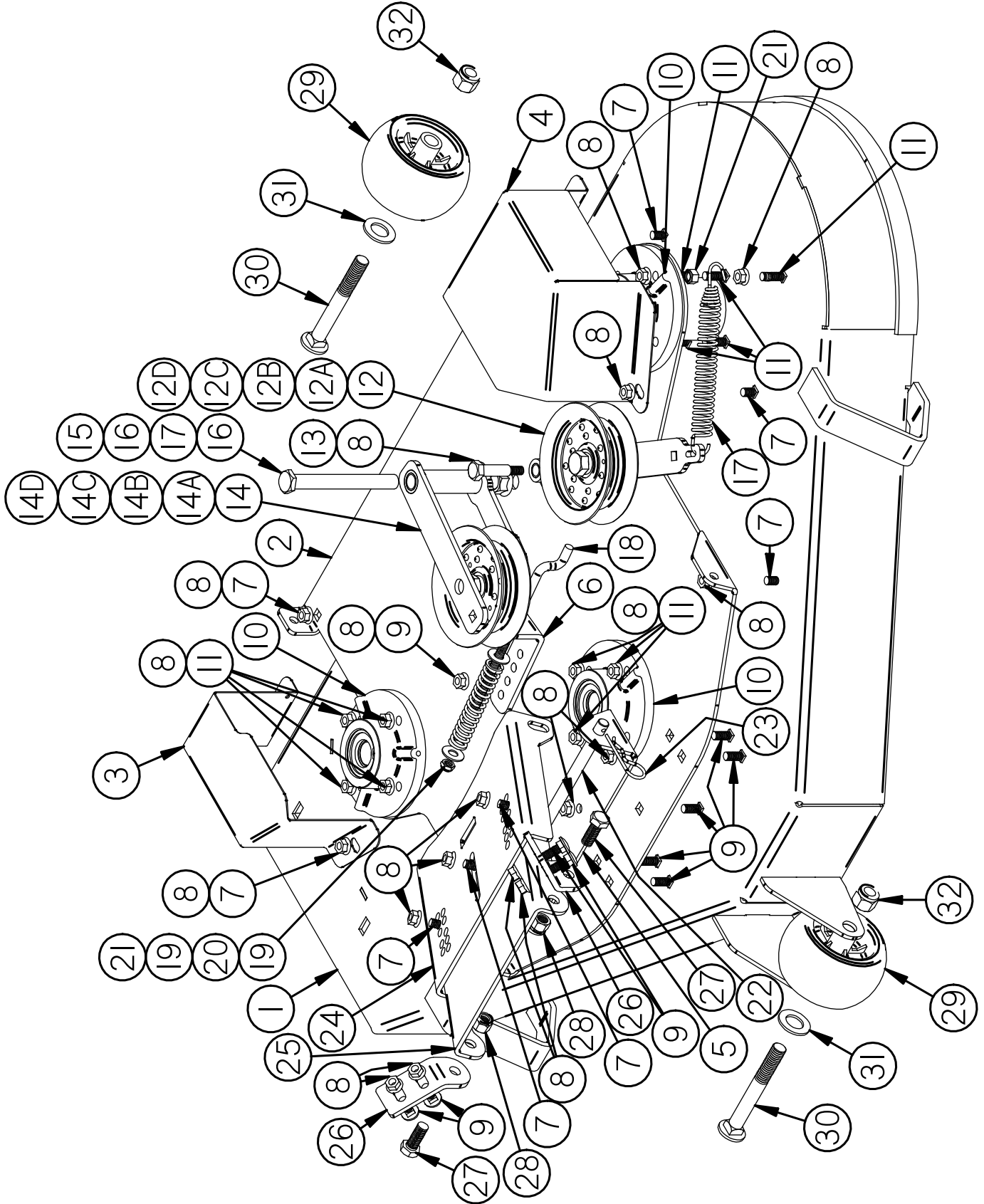
IRON EAGLE WHEELS & TIRES ASSEMBLY



REF	PART#	DESCRIPTION	Qty
1	100220	Weldment - Front Fork	2
2	10208	Seal - Front Fork	2
3	97171	Bearing - Bottom Front Fork	2
4	10206	Race - Bearing Front Fork	4
5	10207	Bearing - Top Front Fork	2
6	W-131	Washer - 1"ID X 1-1/2"OD X 1/8"TH	2
7	F-100	Fitting - 3/16" Drive-In Grease	2
8	10220	Cap - Dust Front Fork	2
9	400253	Assembly - Tire 13/6.5-6 MC Tread	2
10	B-122	Bolt - 5/8"-11 X 7-1/2"	2
11	N-115	Nut - 5/8"-11 Nyloc	2
12	400296	Assembly - Rim/Tire Turf Master 20x10x8	2
13	N-113	Nut - 1/2"-20 Wheel Lug	8
14	200237	Transaxle - LH 2800	1
15	200236	Transaxle - RH 2800	1
16	B-173	Bolt - 5/16"-18 X 2-1/2"	8
17	W-113	Washer - 5/16" Flat	8
18	N-103-W	Nut - 5/16"-18 Whiz Flange	8
19	400306	Guard - Rear	1
20	B-138	Bolt - 1/2"-13 X 1"	4
21	W-166	Washer - 7/16" Flat	4
22	N-157	Nut - 1/2"-13 Whiz Flange	4

DIXIE CHOPPER

IRON EAGLE 44" DECK ASSEMBLY



DIXIE CHOPPER

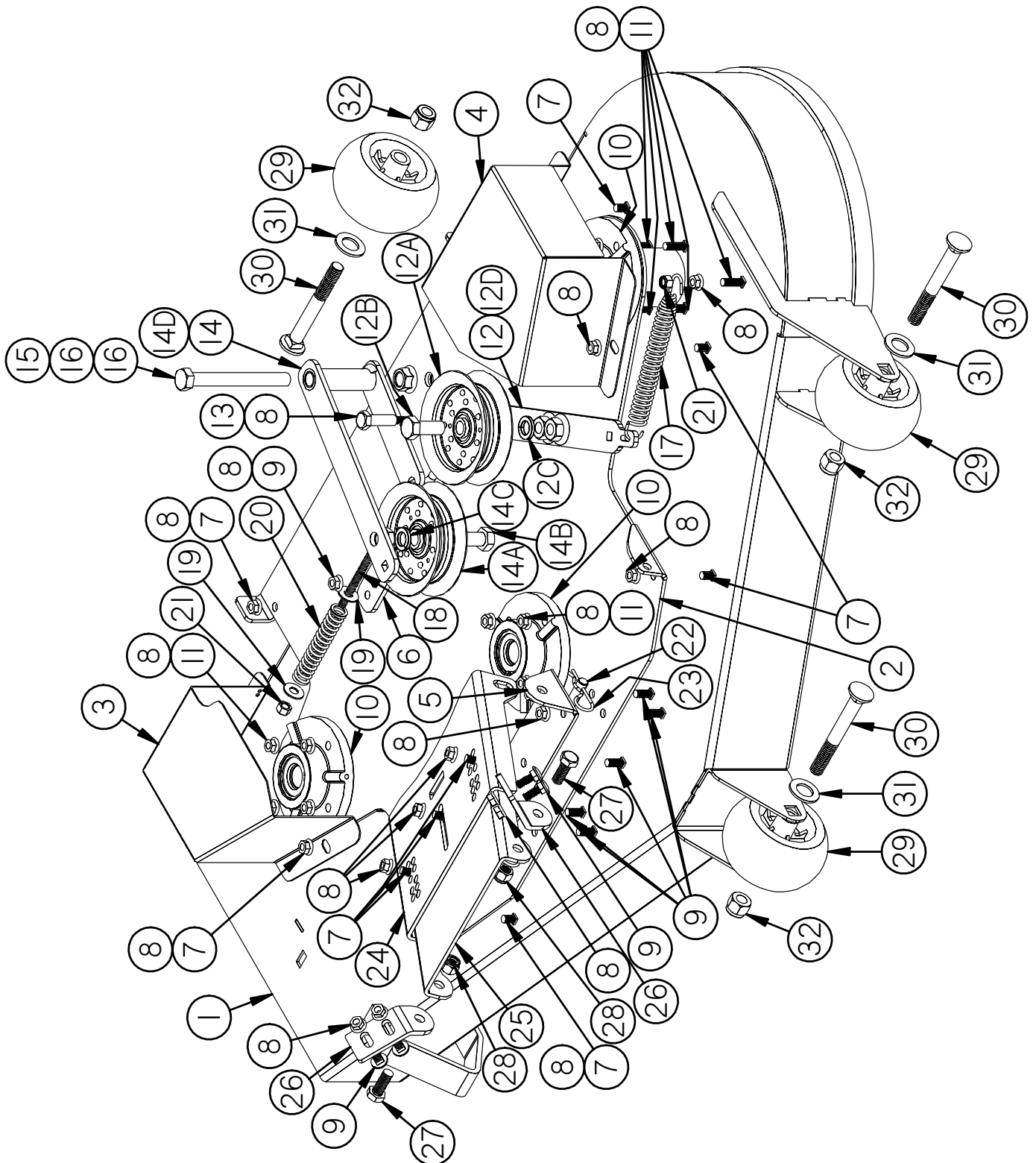
IRON EAGLE 44" DECK ASSEMBLY (CONT'D)

REF#	PART#	DESCRIPTION	QTY
15	B-306	Bolt - 5/8"-11 X 5-1/2"	1
16	N-195	Nut - 5/8"-11 Whiz Flange	2
17	300324	Spring	1
18	300184	Rod - Tension Idler Deck	1
19	W-104	Washer - 3/8" Flat	2
20	68280	Spring - #40	1
21	N-107	Nut - 3/8"-16 Nyloc	2
22	300485	Rod - Stabilizer Deck	1
23	30213	Clip - Hairpin #27	2
24	300548	Plate - Stabilizer Deck Slotted	1
25	300549	Plate - Stabilizer Deck	1
26	300483	Tab - Bracket Stabilizer	2
27	B-117	Bolt - 1/2"-13 X 1-1/4"	2
28	N-143	Nut - 1/2"-13 Nyloc	2
29	300365	Roller - Anti-Scalp	2
30	B-278	Bolt - 5/8"-11 X 5"	2
31	W-188	Washer - 3/4" SAE Flat	2
32	N-115	Nut - 5/8"-11 Nyloc	2

REF#	PART#	DESCRIPTION	QTY
	300520	Assembly - Deck 44"	
1	300492	Weldment - Deck	1
2	300493	Weldment - Plate Top	1
3	300494	Guard - Pulley Right	1
4	300495	Guard - Pulley Left	1
5	300481	Bracket - Stabilizer	1
6	300528	Bracket - Tension	1
7	B-110	Bolt - 3/8"-16 X 3/4"	11
8	N-108	Nut - 3/8"-16 Whiz Flange	35
9	B-135	Bolt - 3/8"-16 X 1"	10
10	300441	Assembly - Hub Deck	
11	B-136	Bolt - 3/8"-16 X 1-1/4"	13
12	300509	Assembly - Idler Deck	1
12A	300401	Pulley - Idler Flat Deep	1
12B	B-264	Bolt - 5/8"-11 X 1-1/2"	1
12C	W-111	Washer - Lock	1
12D	300510	Weldment - Idler Deck	1
13	B-118	Bolt - 1/2"-13 x 2-1/4" Shoulder	1
14	300506	Assembly - Arm Idler Deck-Engine	1
14A	300401	Pulley - Idler Flat Deep	1
14B	B-264	Bolt - 5/8"-11 X 1-1/2"	1
14C	W-111	Washer - Lock	1
14D	300507	Weldment - Arm Idler Engine-Deck	1

DIXIE CHOPPER

IRON EAGLE 50" DECK ASSEMBLY



DIXIE CHOPPER

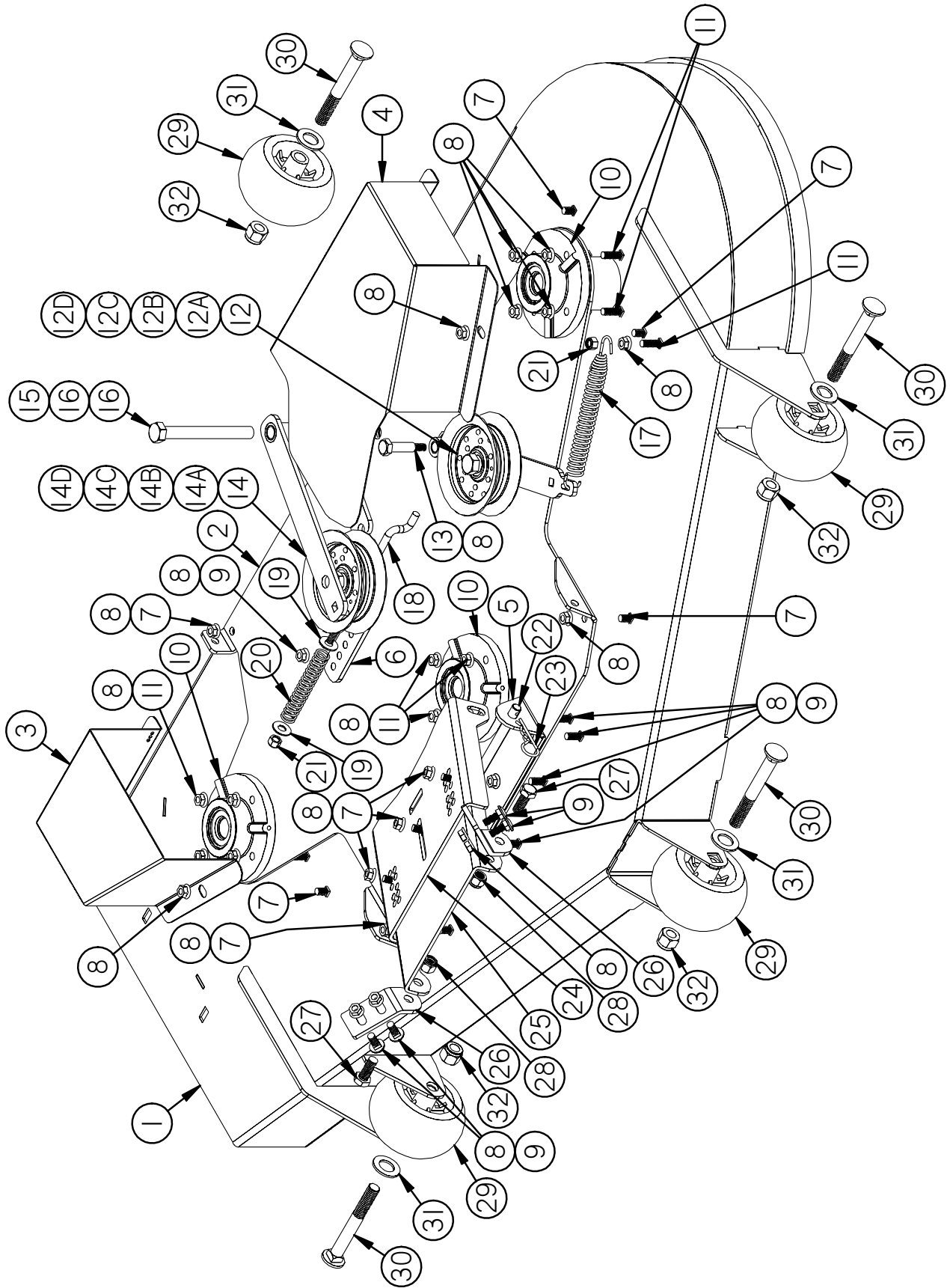
IRON EAGLE 50" DECK ASSEMBLY (CONT'D)

REF#	PART#	DESCRIPTION	QTY
15	B-306	Bolt - 5/8"-11 X 5-1/2"	1
16	N-195	Nut - 5/8"-11 Whiz Flange	2
17	300324	Spring	1
18	300184	Rod - Tension Idler Deck	1
19	W-104	Washer - 3/8" Flat	2
20	68280	Spring - #40	1
21	N-107	Nut - 3/8"-16 Nyloc	2
22	300485	Rod - Stabilizer Deck	1
23	30213	Clip - Hairpin #27	2
24	300548	Plate - Stabilizer Deck Slotted	1
25	300549	Plate - Stabilizer Deck	1
26	300483	Tab - Bracket Stabilizer	2
27	B-117	Bolt - 1/2"-13 X 1-1/4"	2
28	N-143	Nut - 1/2"-13 Nyloc	2
29	300365	Roller - Anti-Scalp	3
30	B-278	Bolt - 5/8"-11 X 5"	3
31	W-188	Washer - 3/4" SAE Flat	3
32	N-115	Nut - 5/8"-11 Nyloc	3

REF#	PART#	DESCRIPTION	QTY
	300521	Assembly - Deck 50"	
1	300479	Weldment - Deck	1
2	300480	Weldment - Plate Top	1
3	300488	Guard - Pulley Right	1
4	300487	Guard - Pulley Left	1
5	300481	Bracket - Stabilizer	1
6	300528	Bracket - Tension	1
7	B-110	Bolt - 3/8"-16 X 3/4"	11
8	N-108	Nut - 3/8"-16 Whiz Flange	35
9	B-135	Bolt - 3/8"-16 X 1"	10
10	300441	Assembly - Hub Deck	
11	B-136	Bolt - 3/8"-16 X 1-1/4"	13
12	300509	Assembly - Idler Deck	1
12A	300401	Pulley - Idler Flat Deep	1
12B	B-264	Bolt - 5/8"-11 X 1-1/2"	1
12C	W-111	Washer - Lock	1
12D	300510	Weldment - Idler Deck	1
13	B-118	Bolt - 1/2"-13 x 2-1/4" Shoulder	1
14	300482	Assembly - Arm Idler Deck-Engine	1
14A	300401	Pulley - Idler Flat Deep	1
14B	B-264	Bolt - 5/8"-11 X 1-1/2"	1
14C	W-111	Washer - Lock	1
14D	300508	Weldment - Arm Idler Engine-Deck	1

DIXIE CHOPPER

IRON EAGLE 60" DECK ASSEMBLY



DIXIE CHOPPER

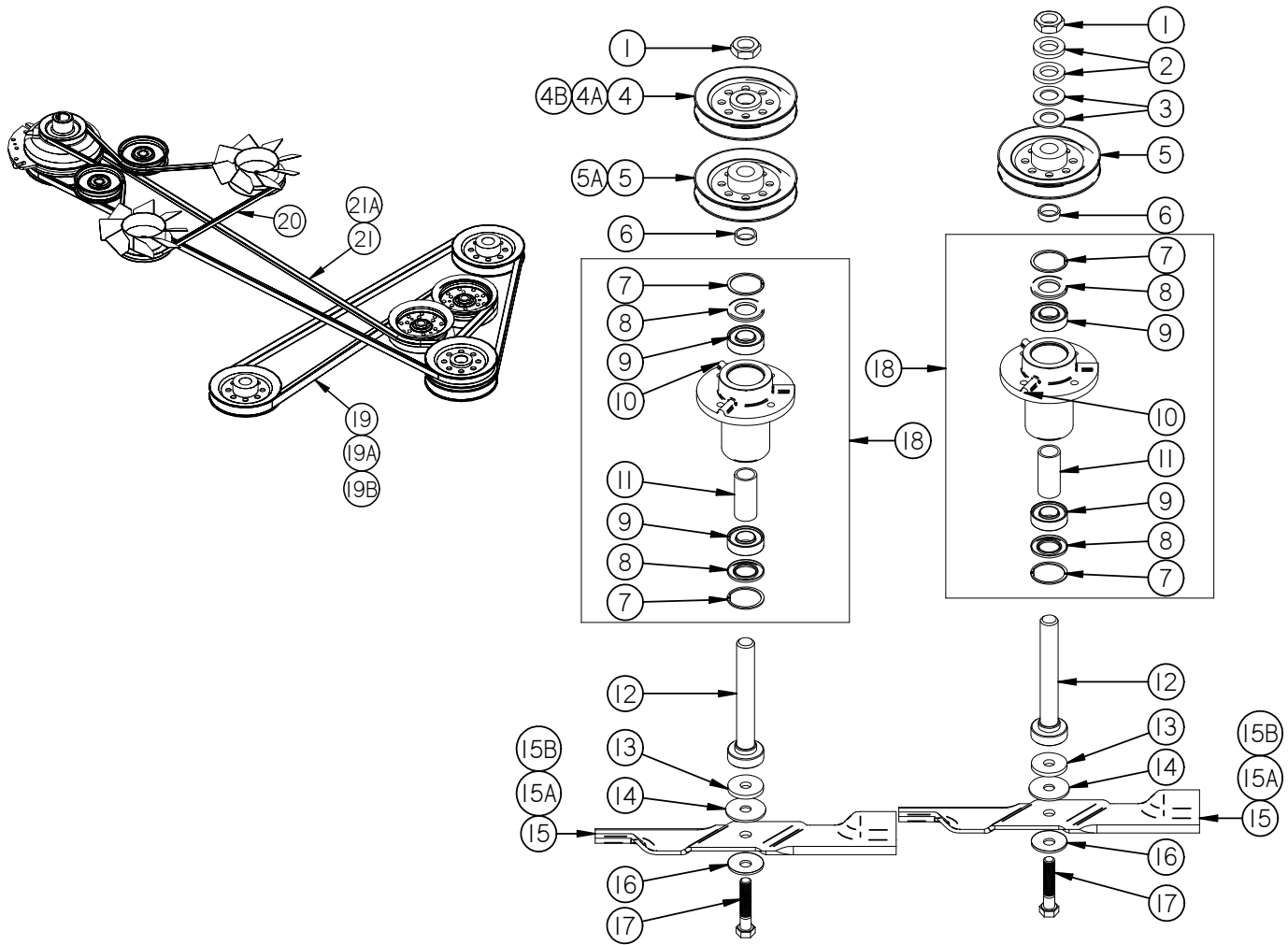
IRON EAGLE 60" DECK ASSEMBLY (CONT'D)

REF#	PART#	DESCRIPTION	QTY
15	B-306	Bolt - 5/8"-11 X 5-1/2"	1
16	N-195	Nut - 5/8"-11 Whiz Flange	2
17	300324	Spring	1
18	300184	Rod - Tension Idler Deck	1
19	W-104	Washer - 3/8" Flat	2
20	68280	Spring - #40	1
21	N-107	Nut - 3/8"-16 Nyloc	2
22	300485	Rod - Stabilizer Deck	1
23	30213	Clip - Hairpin #27	2
24	300548	Plate - Stabilizer Deck Slotted	1
25	300549	Plate - Stabilizer Deck	1
26	300483	Tab - Bracket Stabilizer	2
27	B-117	Bolt - 1/2"-13 X 1-1/4"	2
28	N-143	Nut - 1/2"-13 Nyloc	2
29	300365	Roller - Anti-Scalp	4
30	B-278	Bolt - 5/8"-11 X 5"	4
31	W-188	Washer - 3/4" SAE Flat	4
32	N-115	Nut - 5/8"-11 Nyloc	4

REF#	PART#	DESCRIPTION	QTY
	300522	Assembly - Deck 60"	
1	300490	Weldment - Deck	1
2	300491	Weldment - Plate Top	1
3	300496	Guard - Pulley Right	1
4	300497	Guard - Pulley Left	1
5	300481	Bracket - Stabilizer	1
6	300528	Bracket - Tension	1
7	B-110	Bolt - 3/8"-16 X 3/4"	11
8	N-108	Nut - 3/8"-16 Whiz Flange	35
9	B-135	Bolt - 3/8"-16 X 1"	10
10	300441	Assembly - Hub Deck	
11	B-136	Bolt - 3/8"-16 X 1-1/4"	13
12	300509	Assembly - Idler Deck	1
12A	300401	Pulley - Idler Flat Deep	1
12B	B-264	Bolt - 5/8"-11 X 1-1/2"	1
12C	W-111	Washer - Lock	1
12D	300510	Weldment - Idler Deck	1
13	B-118	Bolt - 1/2"-13 x 2-1/4" Shoulder	1
14	300482	Assembly - Arm Idler Deck-Engine	1
14A	300401	Pulley - Idler Flat Deep	1
14B	B-264	Bolt - 5/8"-11 X 1-1/2"	1
14C	W-111	Washer - Lock	1
14D	300508	Weldment - Arm Idler Engine-Deck	1

DIXIE CHOPPER

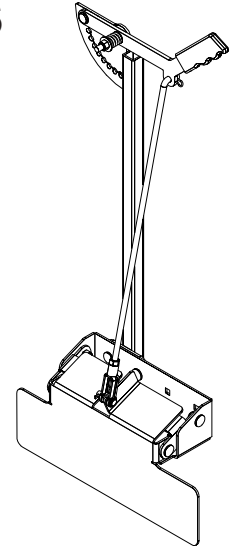
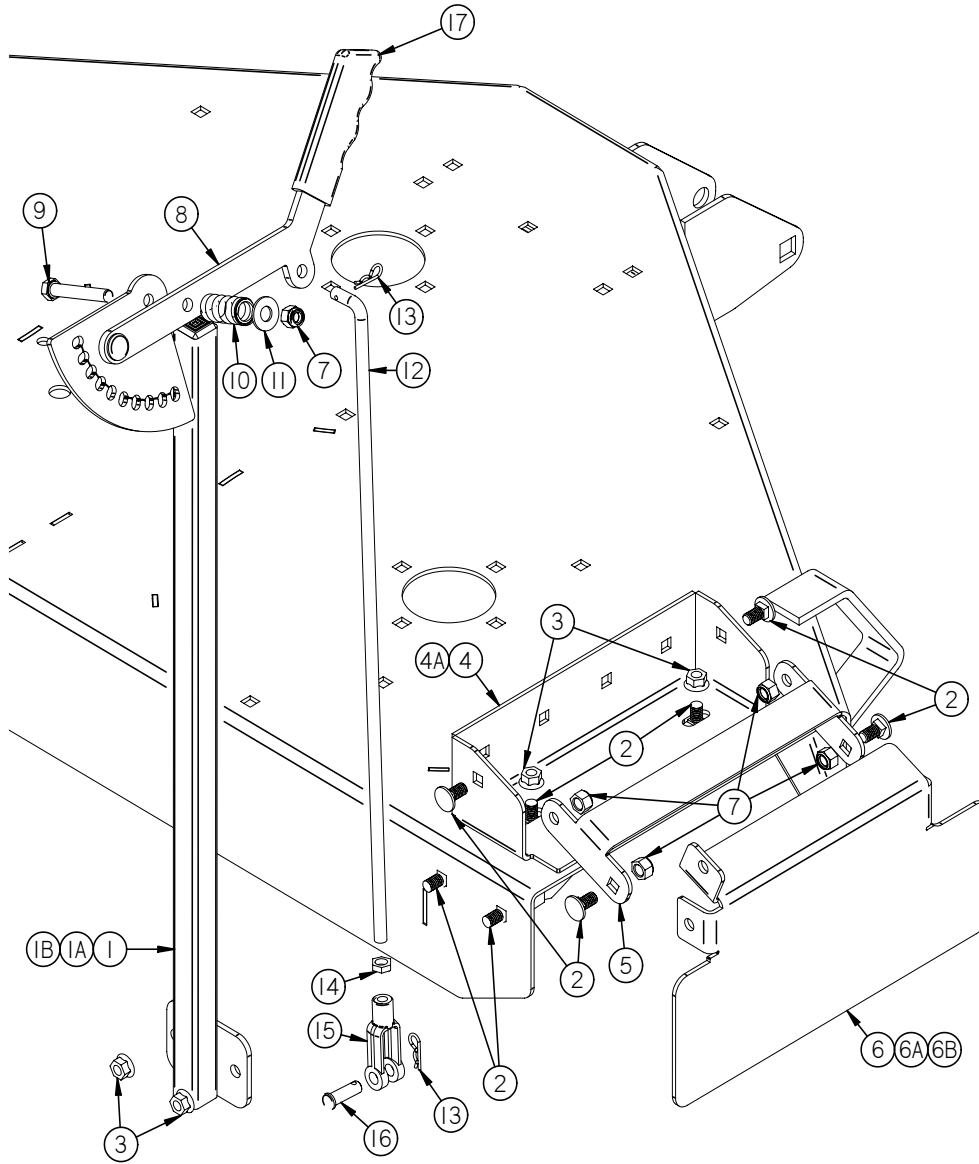
IRON EAGLE SPINDLE HUB ASSEMBLIES



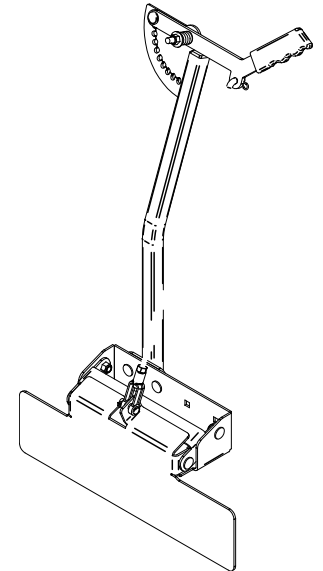
REF	PART#	DESCRIPTION	Qty	REF	PART#	DESCRIPTION	Qty
1	N-167	1"-14 Jam Nut Zinc	3	11	30219	Spacer - Hub Deck	3
2	W-146	Washer - 1" X 1/4" Thick	4	12	30217	Shaft - Short Hub Deck	3
3	W-137	1" X 2" Belleville Washer	4	13	W-182	Washer - 5/8" X 1/4" Thick	3
4	300511	Pulley - Center Top (f/44")	1	14	W-101	Washer - 5/8" Fiber	3
4A	300501	Pulley - Center Top (f/50")	1	15	30227-50X	Blade - X-Style 50" (f/44")	3
4B	9907675X100S	Pulley - Center Top (f/60")	1	15A	30227-52X	Blade - X-Style 52" (f/50")	3
5	9907525X100S	Pulley - Split 5-1/4" X 1" Bore (f/44"/50")	3	15B	30227-62X	Blade - X-Style 62" (f/60")	3
5	9907525X100S	Pulley - Split 5-1/4" X 1" Bore (f/60")	2	16	W-100	Washer - 5/8" Belleville	3
5A	300511	Pulley - 5-1/4" (f/60" Center Bottom)	1	17	B-121-L	Bolt - 5/8"-18 X 3"	3
6	300448	Bushing - Hub Deck Sealed	3	18	300440	Assembly - Hub Deck Sealed (Inc. Items in Box)	3
7	788080	Ring - Retaining	6	19	2006B128R	Belt - Deck 60"	1
8	300443	Seal - Hub Deck	6	19A	2006B112R	Belt - Deck 50"	1
9	30218	Bearing - Hub Deck	6	19B	2008B101R	Belt - Deck 44"	1
10	F-102	Fitting - 1/4"-28 Grease	3	20	2006A62R	Belt - Engine - Pump	1
				21	2008B100R	Belt - Engine - Deck 44"/60"	1
				21A	2006B97R	Belt - Engine - Deck 50"	1

DIXIE CHOPPER

IRON EAGLE OCDC ASSEMBLIES



50" OCDC ASSEMBLY



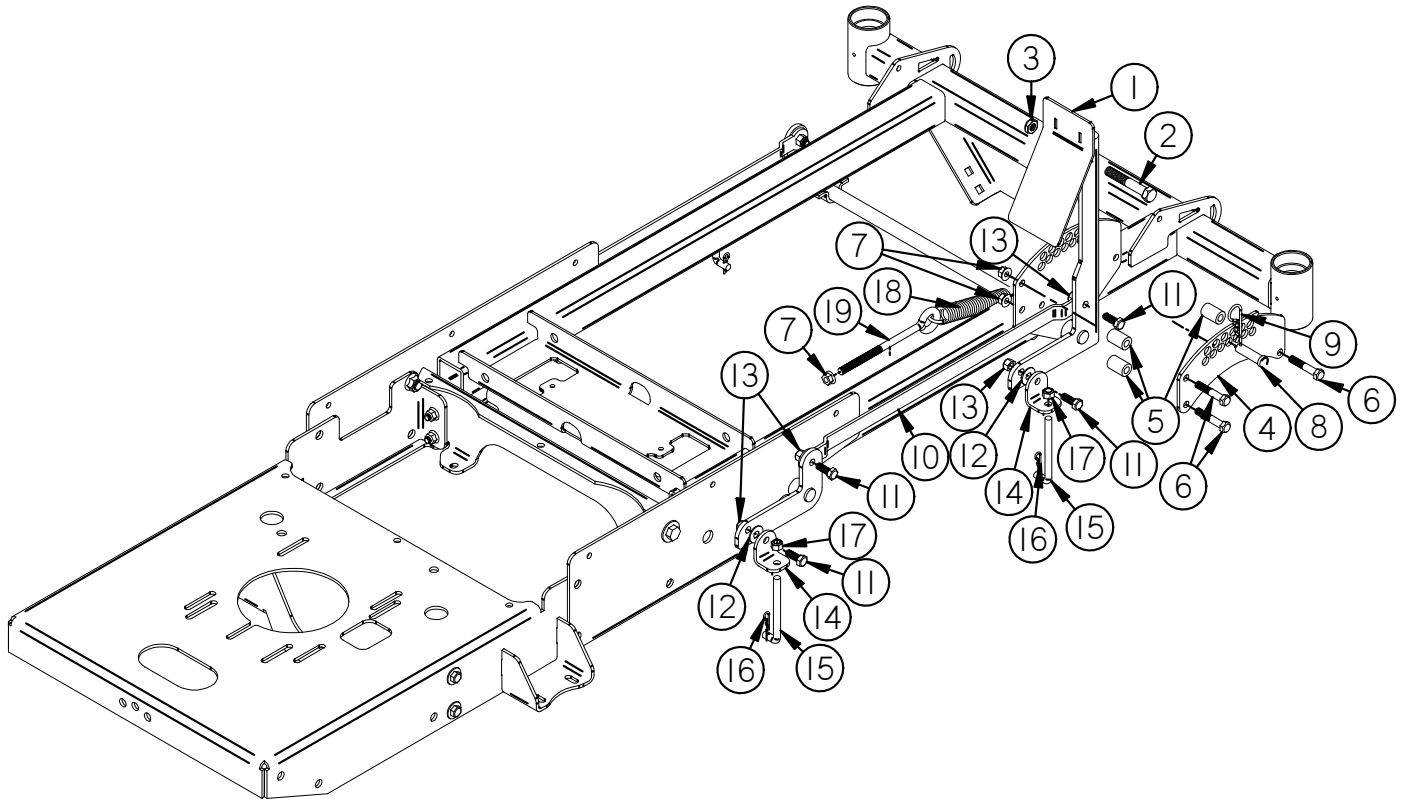
60" OCDC ASSEMBLY

REF	PART#	DESCRIPTION	Qty
	300498	Assembly - OCDC 44"	
	300499	Assembly - OCDC 50"	
	300500	Assembly - OCDC 60"	
1	300532	Weldment - Riser 44"	1
1A	300539	Weldment - Riser 50"	1
1B	300541	Weldment - Riser 60"	1
2	B-110	Bolt - 3/8"-16 X 3/4" Carriage	8
3	N-108	Nut - 3/8"-16 Whiz Flange	4
4	300533	Weldment - Base 44"	1
4A	300534	Weldment - Base 50/60"	1
5	300535	Bracket - Hinge	1
6	300536	Screen 44"	1
6A	300538	Screen 50"	1
6B	300540	Screen 60"	1

REF	PART#	DESCRIPTION	Qty
7	N-107	Nut - 3/8"-16 Nyloc	5
8	900014	Weldment - Handle	
9	B-179	Bolt - 3/8"-16 X 2-1/2"	1
10	20252	Spring	1
11	W-104	Washer - 3/8" Flat	1
12	97122	Rod - Control (Includes Ref#'s-14 & 15)	1
13	20224	Clip - Hair Pin	2
14	N-150	Nut - 3/8"-24	1
15	N-155	Yoke - 3/8"-24 Adjustable	1
16	P-102	Pin - 3/8" X 1-1/4" Clevis	1

DIXIE CHOPPER

IRON EAGLE DECK LIFT ASSEMBLY

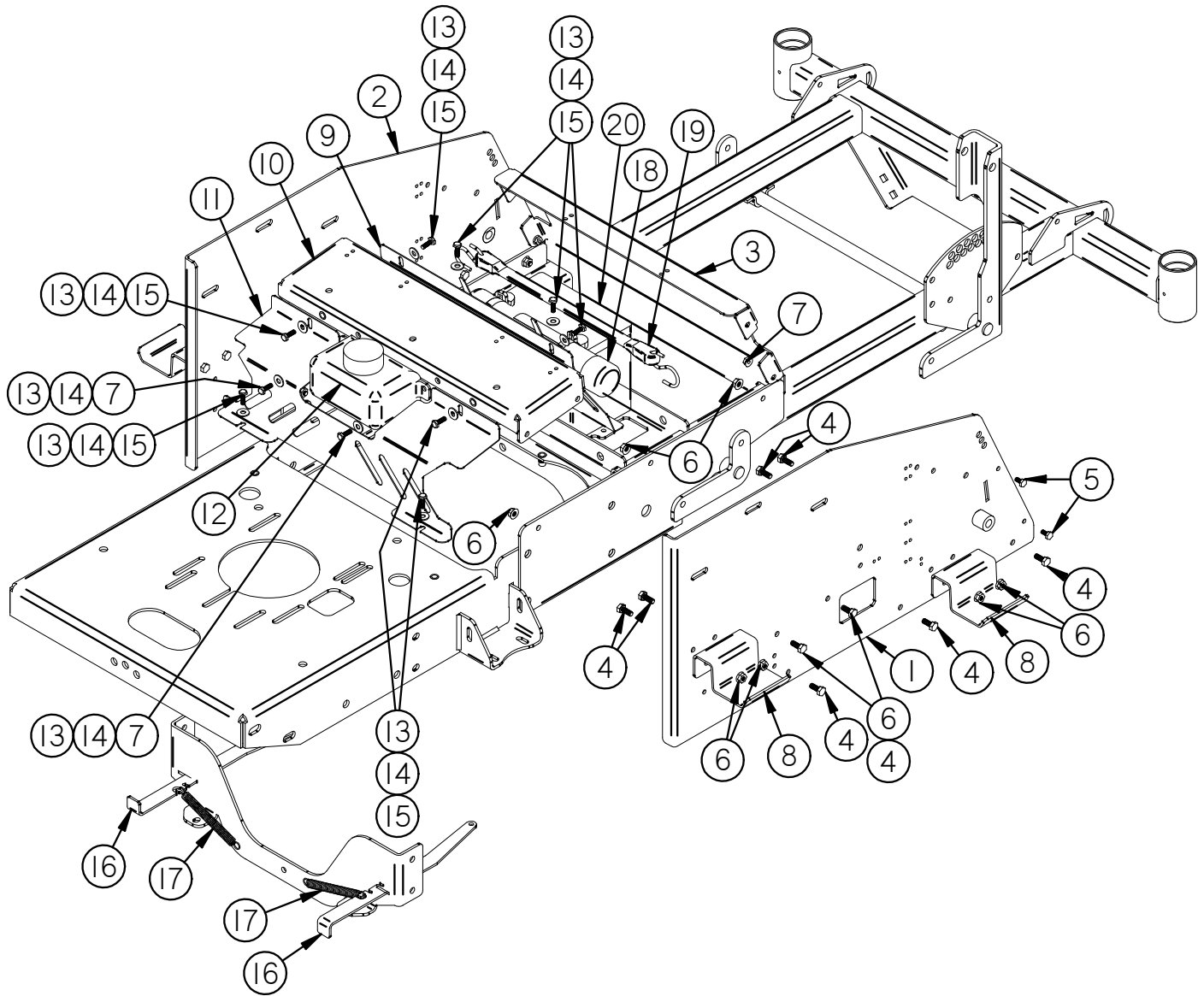


REF#	PART#	DESCRIPTION	QTY
1	300478	Weldment - Pad Pedal Foot	1
2	B-119	Bolt - 1/2"-13 X 3"	1
3	N-126	Nut - 1/2"-13 Nyloc Jam	1
4	300477	Weldment - Plate Outer Height Deck	1
5	300476	Spacer - Adjustmejnt Height	3
6	B-165	Bolt - 3/8"-16 X 2"	3
7	N-108	Nut - 3/8"-16 Whiz Flange	4
8	P-125	Pin - 1/2" X 2" Clevis	1
9	30213	Clip - #27 HAIR PIN	1
10	300475	Link - Arm Lift Deck	2

REF#	PART#	DESCRIPTION	QTY
11	B-108	Bolt - 3/8"-16 X 1"	8
12	W-125	Washer - 3/8" Nylon	4
13	N-107	Nut - 3/8"-16 Nyloc	8
14	300486	Angle - Pivot	4
15	300502	Hanger - Deck 3/8"-16 X 4-3/8" 90°	4
16	20224	Clip - Hair Pin #13	4
17	N-107	Nut - 3/8"-16 Nyloc	4
18	900100	Spring	1
19	B241	Eye Bolt - 3/8"-16 X 6"	1

DIXIE CHOPPER

IRON EAGLE DRIVE FRAME

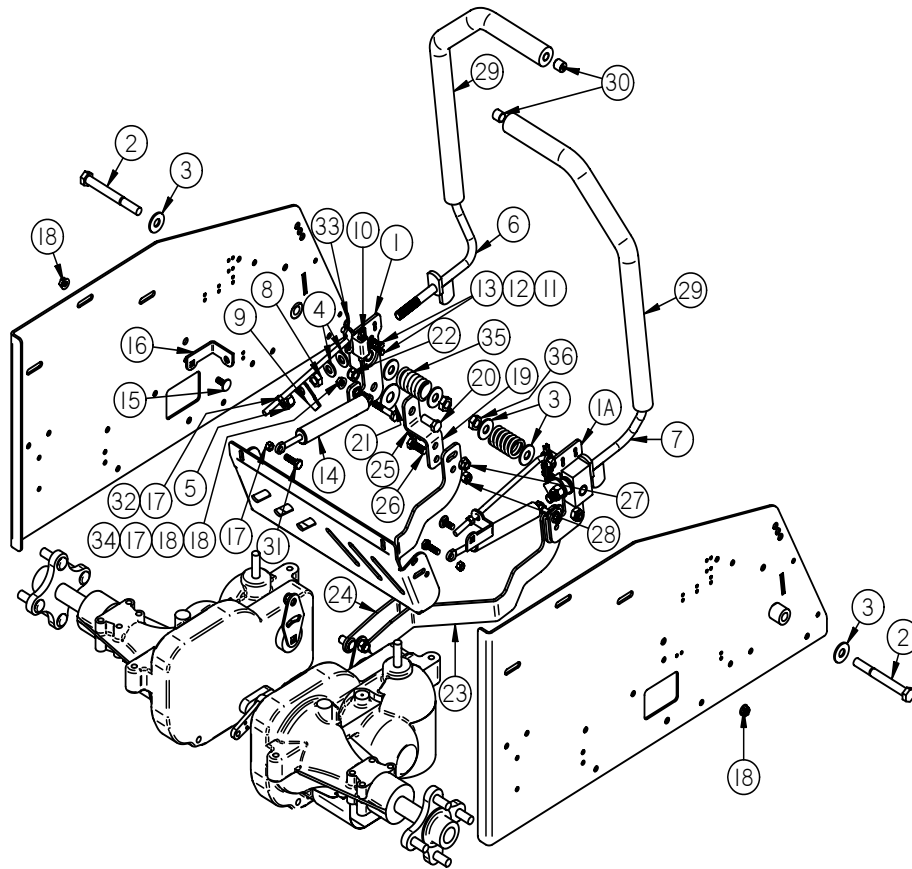


REF	PART#	DESCRIPTION	Qty
1	400302	Weldment - Inner Fender Right	1
2	400303	Weldment - Inner Fender Left	1
3	400304	Panel - Front	1
4	B-107	Bolt - 5/16"-18 X 3/4"	18
5	B-101	Bolt - 1/4"-20 X 1/2"	4
6	N-103-W	Nut - 5/16"-18 Whiz Flange	18
7	N-102	Nut - 1/4"-20 Whiz Flange	6
8	400315	Bracket - Fuel Tank Support	4
9	100221	Guard - Transmission Front	1
10	400305	Cross Member - Support Seat	1

REF	PART#	DESCRIPTION	Qty
11	100222	Guard - Transmission Rear	1
12	200240	Tank - Expansion Transaxle	
13	B-102	Bolt - 1/4"-20 X 3/4"	10
14	W-102	Washer - 1/4" Flat	10
15	N-152	Nut - 1/4"-20 Insert	8
16	200258	Arm - Valve Dump	2
17	400163	Spring	2
18	900015	Tube - Document	1
19	20225	Battery	1
20	20228	Strap - Battery	1

DIXIE CHOPPER

IRON EAGLE DRIVE FRAME COMPONENTS

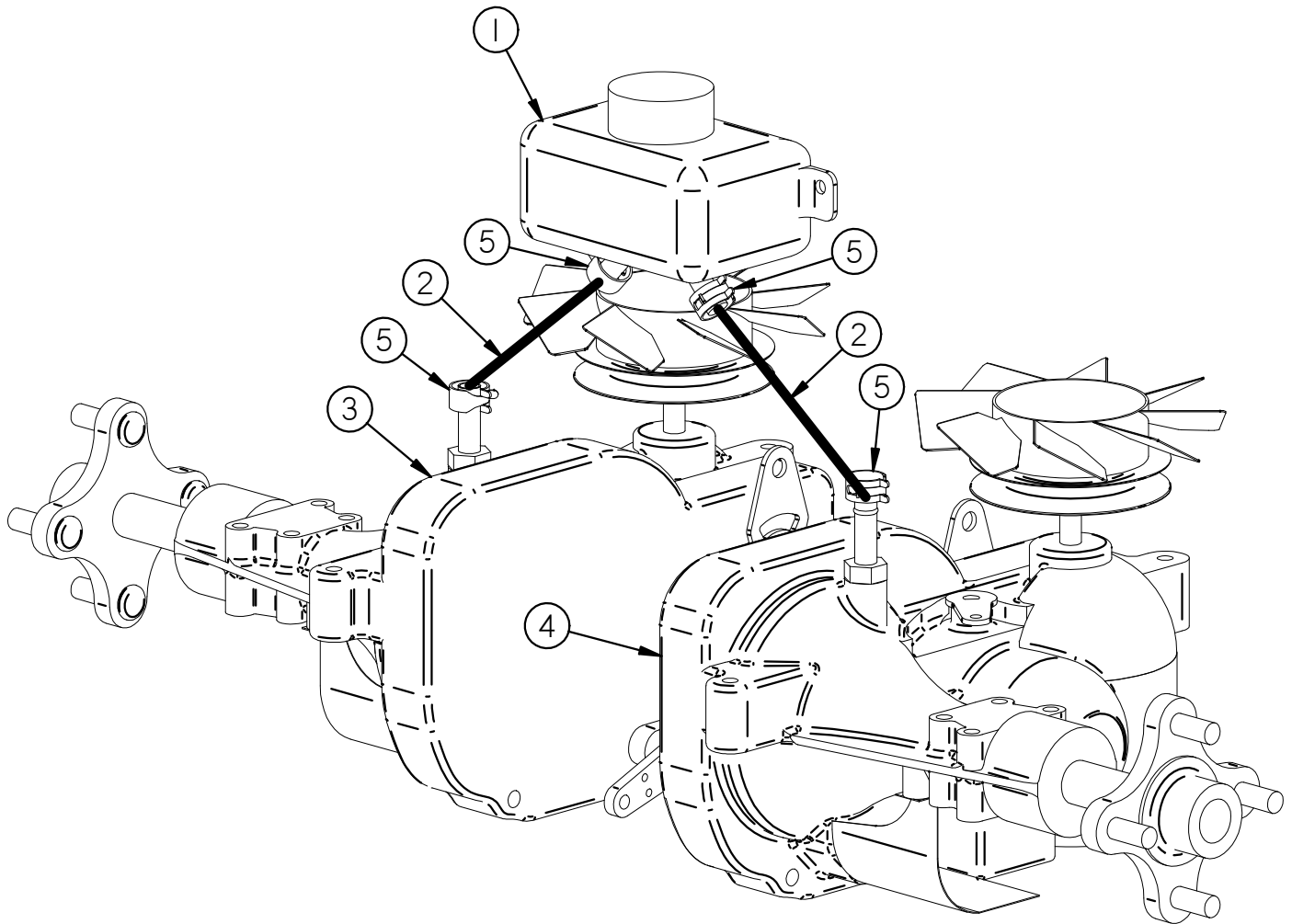


REF	PART#	DESCRIPTION	Qty
1	200271	Weldment - Block Steering Left	1
1A	200272	Weldment - Block Steering Right	1
2	B-197	Bolt - 1/2"-13x4-1/2"	2
3	W-109	Washer - 1/2" Flat	6
4	W-192	Washer - 1/2" Belleville X 1"OD	4
5	N-143	Nut - 1/2"-13 Nyloc	2
6	200067	Weldment - Lever Steering Left	1
7	200066	Weldment - Lever Steering Right	1
8	N-111	Nut - 1/2"-13 Jam	2
9	200247	Tab - Actuator Switch Steering	2
10	500013	Switch - Lever Steering	2
11	B-258	Bolt - M5-.8 X 16mm	4
12	W-180	Washer - M5 Split Lock	4
13	N-179	Nut - M5-.8	4
14	900267	Damper - Steering	2
15	B-104	Bolt - 5/16"-18 X 3/4" Carriage	2
16	200273	Bracket - Guide Rod Steering	2
17	N-131	Nut - 5/16"-18 Nyloc	6

REF	PART#	DESCRIPTION	Qty
18	N-103-W	Nut - 5/16"-18 Whiz Flange	6
19	200255	Bracket - Arm Control	2
20	B-312	Bolt - 7/16"-20 X 1"	2
21	W-140	Washer - 5/8" Nylon	2
22	N-196	Nut - 7/16"-20 Top-Lock	2
23	200256	Arm - Linkage Control Right	1
24	200257	Arm - Linkage Control Left	1
25	B-137	Bolt - 3/8"-16 X 3/4"	2
26	B-108	Bolt - 3/8"-16 X 1"	2
27	N-108	Nut - 3/8"-16 Whiz Flange	2
28	N-107	Nut - 3/8"-16 Nyloc	2
29	400201	Grip - Foam	2
30	400228	Cap - End Plastic Black	2
31	B-131	Bolt - 5/16-18 X 1 HHCS Gr.5	4
32	200270	Rod - Stop Forward Steering	2
33	20224	Clip - Pin Hair #13	2
34	B-105	Bolt - 5/16-18x1 3/4 HHCS	2
35	100107	Spring - Suspension	2
36	N-111	1/2"-13 Hex Jam Nut	2

DIXIE CHOPPER[®]

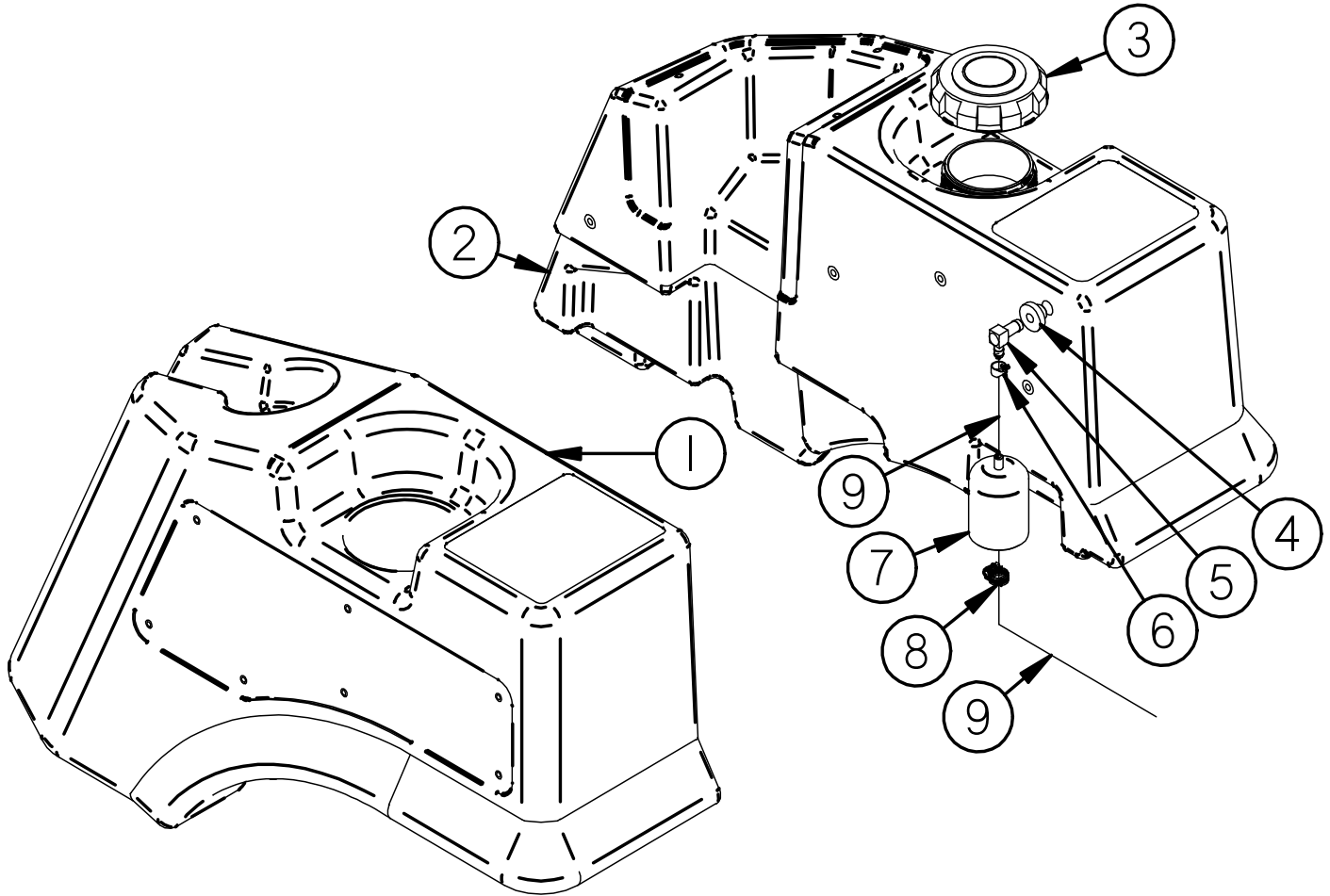
HYDRAULIC HOSE ROUTING



REF	PART#	DESCRIPTION	Qty
1	200240	Tank - Expansion Transaxle	1
2	600030	Hose - 1/2" ID. x 3/4" OD. Fuel Line	2
3	200237	Transaxle - LH 2800	
4	200236	Transaxle - RH 2800	
5	200226	Clamp - Spring Black 1/2"	4

DIXIE CHOPPER[®]

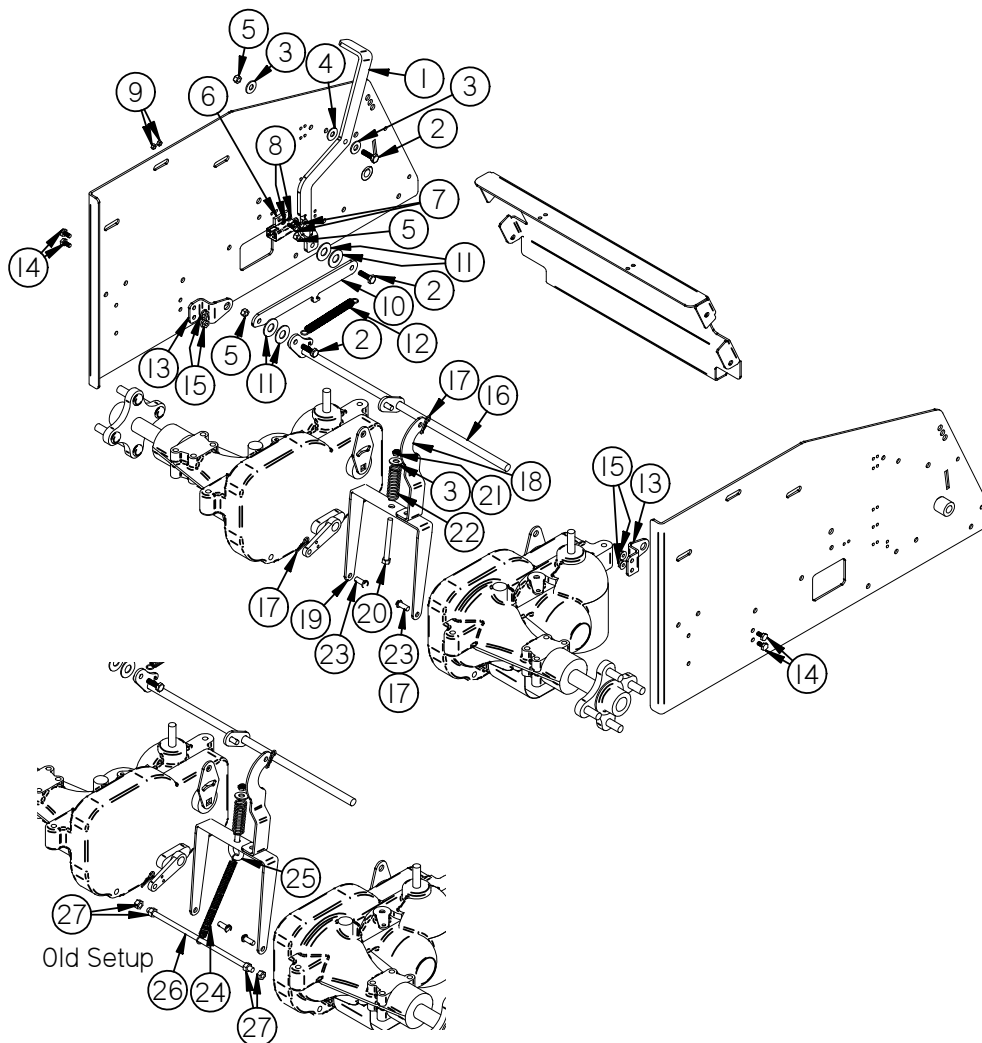
IRON EAGLE FUEL COMPONENTS



REF	PART#	DESCRIPTION	Qty
	600158	Kit - Component Fuel (Inc. Items in Grey)	
1	400311	Tank - Storage Molded Left	1
2	400298	Tank - Fuel Molded Right	1
3	400314	Cap - Tank Fuel	1
4	600153	Grommet - Rubber Viton	1
5	72218	Fitting - 90 Degree	1
6	68231	Clamp - Hose Micro #4	1
7	600151	Pickup - Fuel w/check & Filter	1
8	72012	Clamp - Worm 5/16"	1
9	600152	Hose - 1/4" X 14-1/2" Long	/ft

DIXIE CHOPPER

IRON EAGLE PARKING BRAKE COMPONENTS

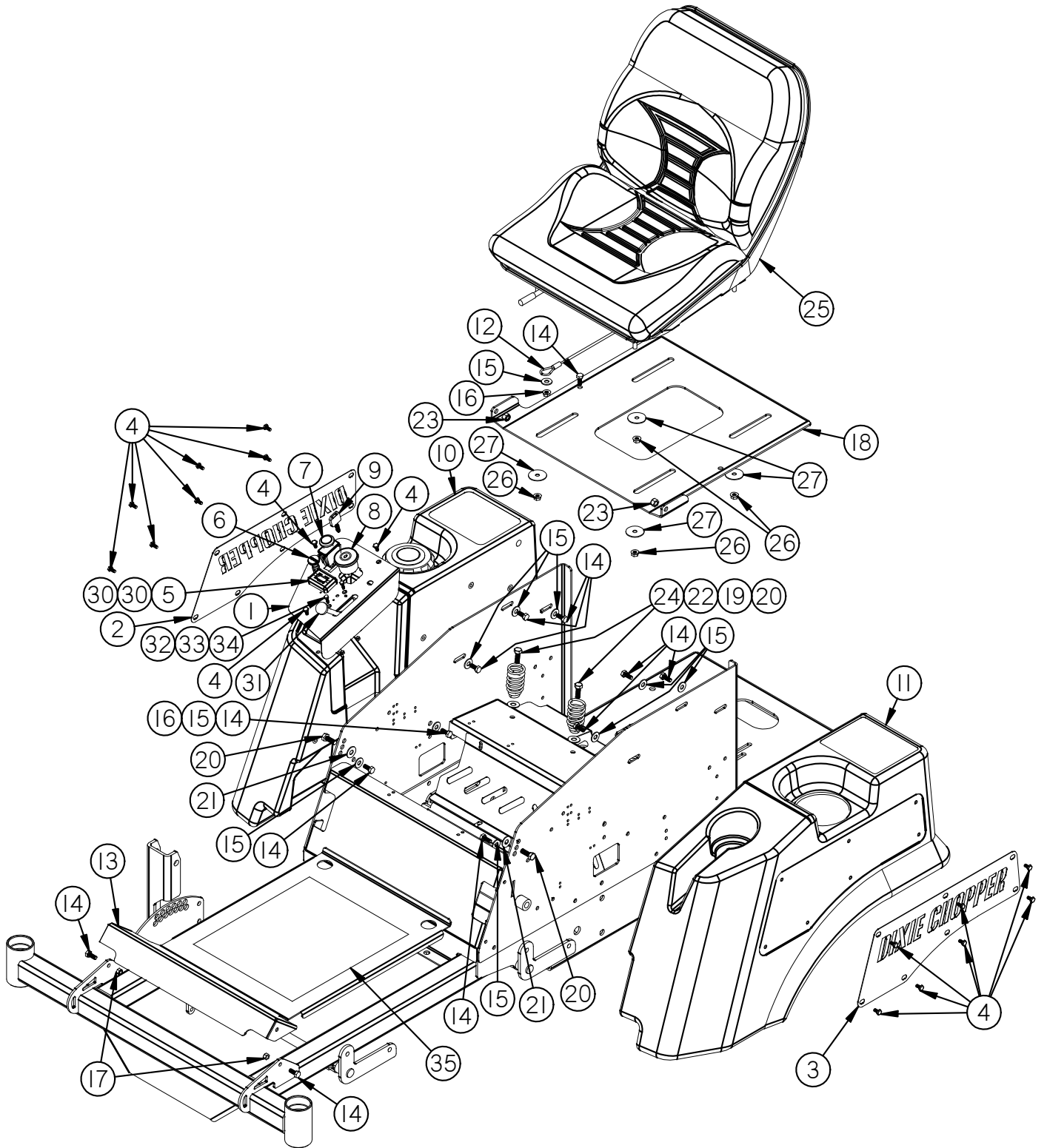


REF	PART#	DESCRIPTION	Qty
1	200248	Handle - Brake Parking	1
2	B-131	Bolt - 5/16"-18 X 1"	2
3	W-113	Washer - 5/16" Flat	3
4	W-184	Washer - 5/16" Nylon Flat	1
5	N-131	Nut - 5/16"-18 Nyloc	3
6	500019	Switch - Brake	1
7	B-258	Bolt - M5-.8 X 16mm	2
8	W-180	Washer - M5 Split Lock	2
9	N-179	Nut - M5-.8	2
10	200251	Linkage - Brake Parking	1
11	W-171	Washer - 1/2" Nylon	4
12	200261	Spring	1
13	200249	Keeper - Rod Brake	2
14	B-101	Bolt - 1/4"-20 X 1/2"	4

REF	PART#	DESCRIPTION	Qty
15	N-102	Nut - 1/4"-20 Whiz Flange	1
16	200250	Weldment - Rod Brake	1
17	20224	Clip - Hair Pin #13	3
18	200254	Arm - Cam Brake Parking	1
19	200252	Connector - Brake Parking	1
20	B-176	Bolt - 5/16"-18 X 3"	1
21	N-144	Nut - 5/16"-18 Nyloc Jam	1
22	20280L-20	Spring - 20lb. Compression	1
23	P-112	Pin - 1/4"OD X 3/4" Length	2
24	400163	Spring	1
25	B-150	Bolt - 5/16"-18 X 2-1/2" Eye	1
26	200265	All Thread - 5/16"-18 X 12"	1
27	N-103	Nut - 5/16"-18	4

DIXIE CHOPPER

IRON EAGLE BODY COMPONENTS



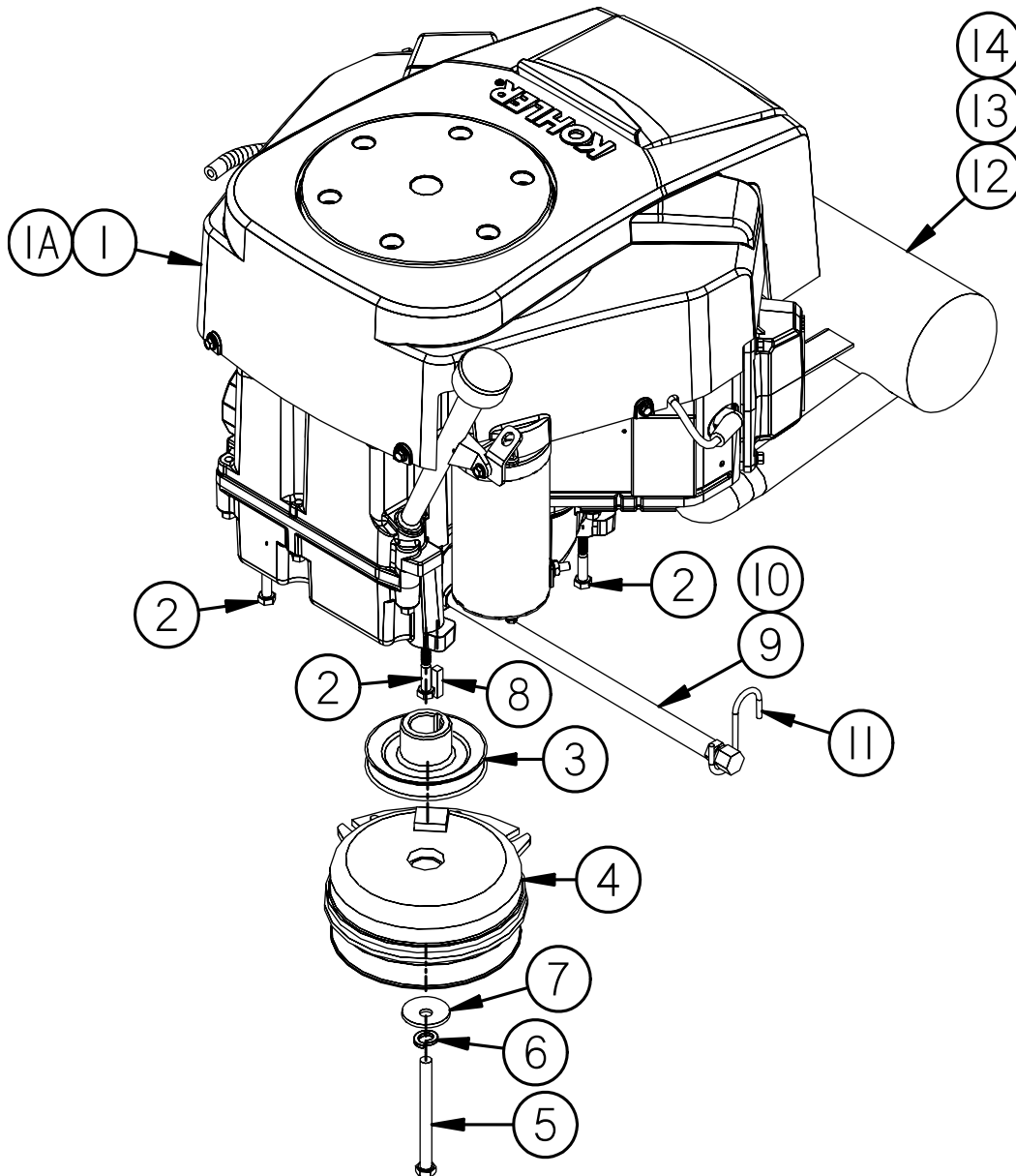
DIXIE CHOPPER[®]

IRON EAGLE BODY COMPONENTS (CONT'D)

REF	PART#	DESCRIPTION	Qty
1	400308	Panel - Gauge	1
2	400318	Panel - Inset Tank Right	1
3	400317	Panel - Inset Tank Left	1
4	B-103	Bolt - 1/4"-20 X 1/2" Stainless	17
5	500037	Meter - Hour/Tachometer	1
6	600072	Cable - Choke	1
7	500016	Switch - PTO	1
8	500017	Switch - Ignition	1
9	500018	Key - Ignition Molded	1
10	400311	Tank - Storage Molded Left	
11	400298	Tank - Fuel Molded Right	
12	40218	Cable - Seat	1
13	400307	Pan - Floor	1
14	B-107	Bolt - 5/16"-18 X 3/4"	12
15	W-113	Washer - 5/16" Flat	10
16	N-103-W	Nut - 5/16"-18 Whiz Flange	2
17	N-131	Nut - 5/16"-18 Nyloc	2
18	400310	Pan - Seat	1
19	400301	Spring - Seat	3
20	B-108	Bolt - 3/8"-16 X 1"	5
21	W-125	Washer - 3/8" Nylon	2
22	W-104	Washer - 3/8" Flat	3
23	N-107	Nut - 3/8"-16 Nyloc	2
24	N-108	Nut - 3/8"-16 Whiz Flange	3
25	400328	Seat - Michigan	1
26	N-103-W	Nut - 5/16"-18 Whiz Flange	4
27	W-118	Washer - 5/16" Fender	4
28	400186	Switch - Seat	1
29	B-292	Bolt - 1/4"-20 X 3/4" Round Phillips	2
30	B-300	Screw - #4 X 3/8" Phillips Truss Head	2
31	400297	Assembly - Throttle	1
32	B-258	Bolt - M5-.8 X 16mm	2
33	W-180	Washer - M5 Lock	2
34	N-179	Nut - M5-.8	2
35	400323	Tape - Traction	1

DIXIE CHOPPER[®]

23 & 25 Hp KOHLER ENGINE



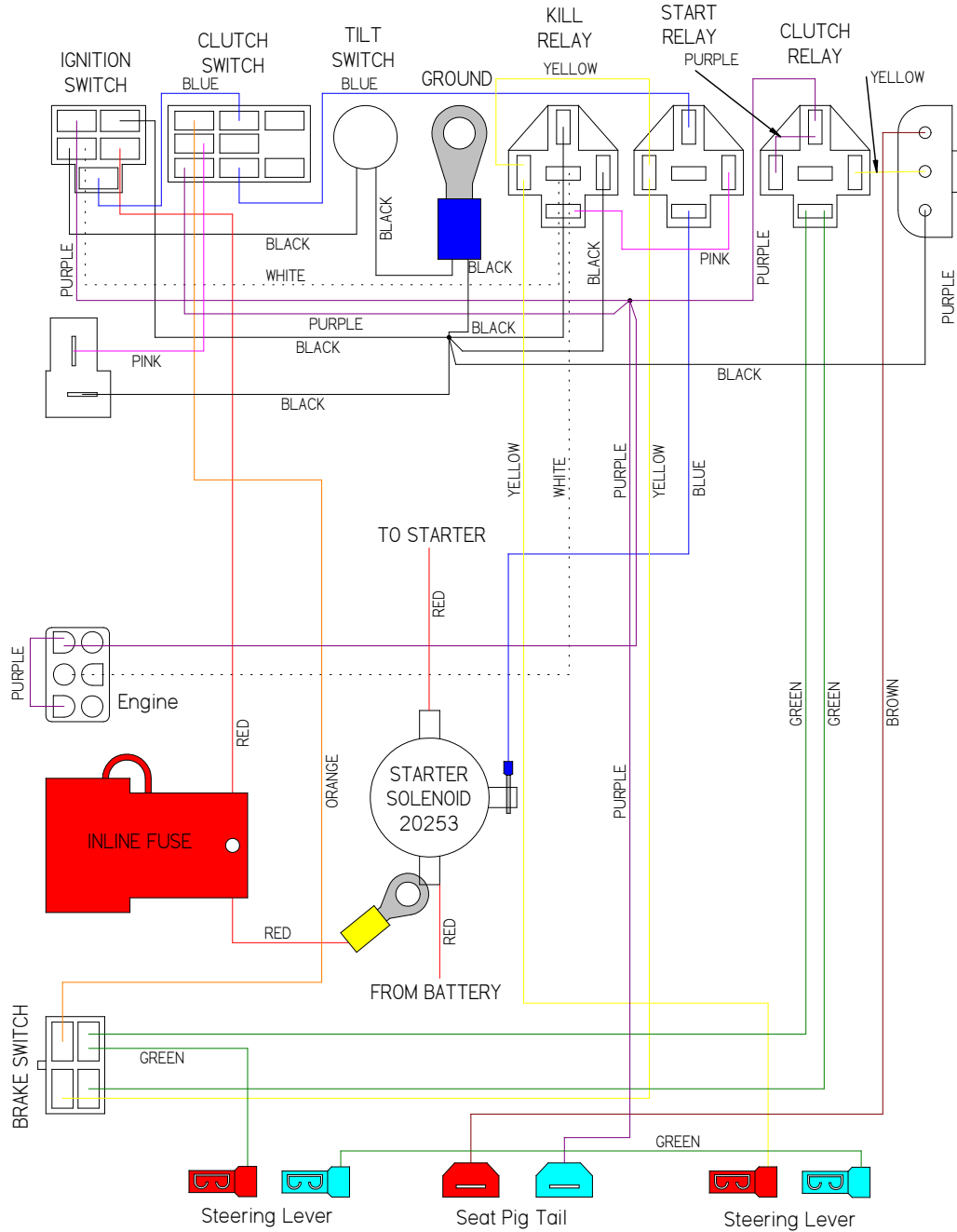
REF	PART#	DESCRIPTION	Qty
1	600144	Engine - 23Hp	1
1A	600145	Engine - 25Hp	1
2	B-317	Bolt - 3/8" Self Tapping	4
3	300474	Pulley - Drive	1
4	500067	Clutch - Electric	1
5	B-216	Bolt - 7/16"-20 X 3"	1
6	W-108	Washer - 7/16" Split Lock	1
7	W-144	Washer - 7/16" Belleville SS	1

REF	PART#	DESCRIPTION	Qty
8	K-103	Key - 1/4" X 1" Square	1
9	600106	Hose - Drain Oil 3/8"	1
10	600103	Cap - Drain Oil	1
11	C-117	Hook - S	1
12	600157	Muffler - 23Hp & 25Hp	1
13	B-184	Bolt - 5/16"-24 X 3/4" Socket Head	4
14	N-103-W	Nut - 5/16"-18 Whiz Flange	4

DIXIE CHOPPER[®]

IRON EAGLE WIRING HARNESS

PART# 500068



PART#	DESCRIPTION	Qty
500069	Cable - Battery Red 8"	1
500068	Harness - Wiring IE	1
500067	Clutch - Electric 5.5" 5218-116A	1
500037	METER - HOUR / TACH	1
500035	Harness - Electric Switch Seat	1
500021	Cable - Negative Black Battery	1
500020	Cable - Positive Red Battery	1

PART#	DESCRIPTION	Qty
500019	Switch - Electric Brake/Seat	3
500044	Module - Delay Timer	1
500062	Pigtail - Wiring Clutch	1
65510	Relay - Kill/Start/Clutch	3
20225-B	Boot - Battery Positive	1
20226-B	Cable - Battery 12"	1

DIXIE CHOPPER[®]

General Bolt Torque Specifications

STANDARD DRY TORQUE IN FOOT-POUNDS

Bolt Size Inches	Coarse Thread /Inches	SAE 0-1-2 Low Carbon Steel	SAE Grd. 3 Medium Carbon Steel	SAE Grd. 5 Med. Carbon Heat T. Steel	SAE Grd. 6 Med. Carbon Treat. Steel	SAE Grd. 7 Med. Carbon Alloy Steel	SAE Grd. 8 Med. Carbon Alloy Steel
1/4	20	6	9	10	12.5	13	14
5/16	18	12	17	19	24	25	29
3/8	16	20	30	33	43	44	47
7/16	14	32	47	54	69	71	78
1/2	13	47	69	78	106	110	119
9/16	12	69	103	114	150	154	169
5/8	11	96	145	154	209	215	230
3/4	10	155	234	257	350	360	380
7/8	9	206	372	382	550	570	600
1	8	310	551	587	825	700	840
1-1/8	7	480	794	872	1304	1325	1430
1-1/8	7	675	1105	1211	1815	1825	1975

To determine the torque for a fine thread bolt, increase the above coarse thread ratings by 9%.

DIXIE CHOPPER

NOTES

DIXIE CHOPPER

NOTES

DIXIE CHOPPER

NOTES



DIXIE CHOPPER[™]

The World's Fastest Lawn Mower

6302 E. County Road 100 North

Coatesville, IN. 46121

Phone 1-765-CHOPPER

www.dixiechopper.com

Dixie Chopper, Magic Circle, and the Magic Circle Atom Logo are all trademarks of Magic Circle Corporation and may not be reproduced without permission.

Printed In USA

Specifications and instructions subject to change without notice.

Print Date 06/09