



Serial Numbers
Iron Eagle-xxxxxx
Magnum-xxxxxxx
and Higher

Model # _____

Engine Model # _____

Serial # _____

Engine Serial # _____

Date Purchased _____

Engine Spec. # _____

2011 MAGNUM/IRON EAGLE PARTS MANUAL

DIXIE CHOPPERTM

Congratulations on your purchase of a **DIXIE CHOPPER** lawn mower. We believe you have exercised excellent judgement, and are most appreciative of your patronage.

**Your DIXIE CHOPPER Dealer is your *#1 SOURCE*
for
DIXIE CHOPPER parts and service !**

Please call or visit your nearest authorized Dixie Chopper
Dealer for
additional service information.



AUTHORIZED DEALER

Let us know how you are getting along with your new CHOPPER!

www.dixiechopper.com

Dixie Chopper reserves the right to make changes or add improvements to its products at any time without incurring any obligation to make such changes to products previously manufactured. Neither Dixie Chopper, nor its dealers, accept responsibility for variations which may be evident in the actual specifications of its products and the statements and descriptions contained in this publication.

DIXIE CHOPPERTM

CONTENTS

QUICK REFERENCE PARTS	1
DECALS	2
FRAME	7
WHEELS AND TIRES	8
DECK	7
SPINDLES	15
OCDL	16
DECK LIFT	17
DRIVE FRAME	18
DRIVE FRAME COMPONENTS	19
HYDRAULIC ROUTING	20
FUEL	21
PARKING BRAKE	22
BODY	23
ENGINE	27
ELECTRICAL DIAGRAM	29
SPECIFICATIONS	30
NOTES	31

DIXIE CHOPPERTM

QUICK REFERENCE PARTS

MODEL	2750	2760	2344	2650
Engine	Briggs 27Hp	Briggs 27Hp	Briggs 23Hp	Briggs 26Hp
Deck	50"	60"	44"	50"
Rear Tire/Rim Complete (Right/Left)	400371	400371	400296	400296
Front Tire/Rim Complete	400253	400253	400253	400253
Belts				
Engine-Pump Raw	2006A62R	2006A62R	2006A62R	2006A62R
Clutch-Deck Belt	2010B97W	2010B100W	2010B100W	2010B97W
Deck Belt	2006B112R	2006B128R	2008B101R	2006B112R
Filters				
Fuel Filter	691035	691035	25-050-22	25-050-22
Briggs Air Filter	792105	792105	32-083-03	32-083-03
Briggs Foam Filter				
Oil Filter	492932	492932	12-050-01	12-050-01
Blades				
X-Blade	30227-52X	30227-62X	30227-50X	30227-52X
Various Parts				
Fiber Washer	W-101	W-101	W-101	W-101
Deck Roller	300365	300365	300365	300365
Choke Control	600072	600072	600072	600072
Throttle Assembly	400297	400297	400297	400297
Fuel Cap	400314	400314	400314	400314
Mesh Litter Bag (Optional)	BAG-101	BAG-101	BAG-101	BAG-101

DIXIE CHOPPER™

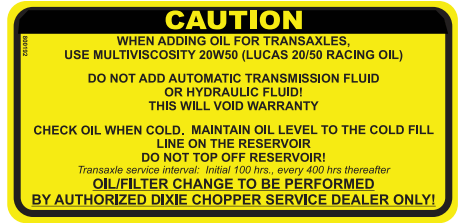
DECALS



1



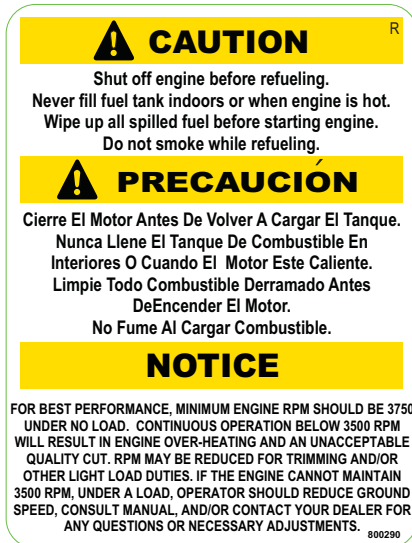
2



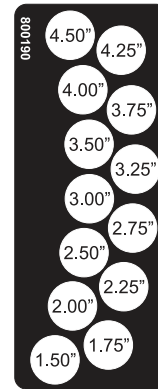
3



4



5



6



7



8



9



13



11



12



14

REF	PART#	DESCRIPTION	Qty
1	800018	Decal - Document Tube (Caution)	1
2	800060	Decal - Deck Spindle Lucas Grease	1
3	800192	Decal - Caution Oil	1
4	800291	Decal - Fuel Caution/NOTICE Left	1
5	800290	Decal - Fuel Caution/NOTICE Right	1
6	800190	Decal - Height Adjustment	1
7	800061	Decal - Lucas Engine Oil	1
8	65408	Decal - 50" Cut	2

REF	PART#	DESCRIPTION	Qty
9	65409	Decal - 60" Cut	2
11	800199	Decal - Pivot Plate	1
12	800204	Decal - Pan Floor IE/SE 2009	1
13	800208	Decal - Warning Weight Hitch IE	1
14	800295	Decal - Indiana/USA 2010	1

DIXIE CHOPPER™

DECALS (CONT'D)



16



30229

⚠ DANGER PELIGRO

KEEP HANDS & FEET AWAY. DO NOT OPERATE MOWER UNLESS GUARD OR GRASS CATCHER IS ATTACHED.

MANTENGA ALEJADOS MANOS Y PIES. NO OPERE EL CORTACÉSPED A MENOS QUE LA PROTECCIÓN O CAPTACION DE HIERBA ESTÉ COLOCADA.

17



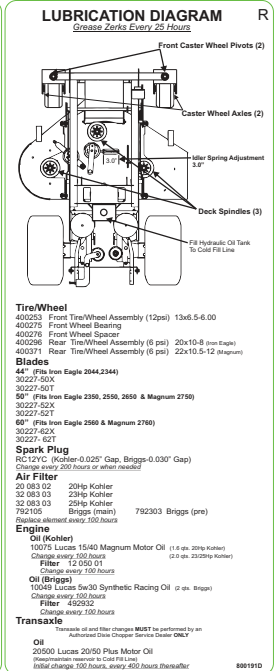
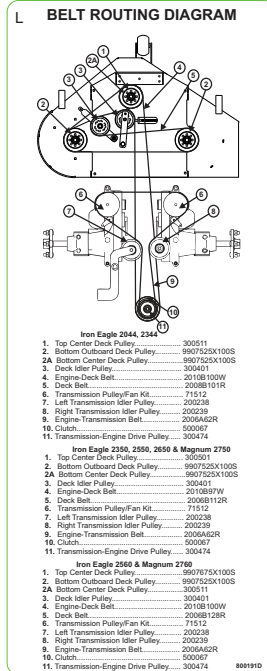
OPERATOR CONTROLLED DISCHARGE CHUTE

OCDC

Safe operation of this vehicle is the sole responsibility of the operator. Safety is an ATTITUDE and it starts with you!

97072

18



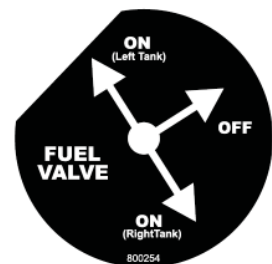
15



19



20,20A



21

REF	PART#	DESCRIPTION	Qty
15	800191D	Decal - Belt Route	1
16	800222	Decal - Guard Rear Magnum	1
17	30229	Decal - Deck Danger	2
18	97072	Decal - OCDC Chute	1

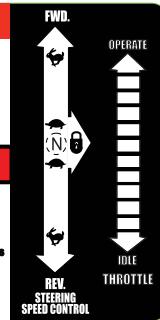
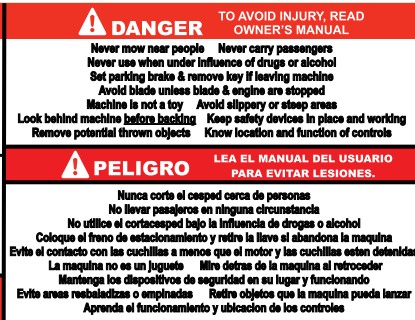
REF	PART#	DESCRIPTION	Qty
19	800203	Decal - Fender 2009	2
20	800281	Decal - Magnum 2750	1
20A	800282	Decal - Magnum 2760	1
21	800254	Decal - Valve Fuel Magnum	1

DIXIE CHOPPER™

DECALS (CONT'D)



22



23

CAUTION

Shut off engine before refueling.
Never fill fuel tank indoors or when engine is hot.
Wipe up all spilled fuel before starting engine.
Do not smoke while refueling.

PRECAUCIÓN

Cierre El Motor Antes De Volver A Cargar El Tanque.
Nunca Llene El Tanque De Combustible En Interiores O Cuando El Motor Este Caliente.
Limpie Todo Combustible Derramado Antes De Encender El Motor.
No Fume Al Cargar Combustible.

NOTICE

WARRANTY TO BE USED ONLY TO COVER CORRECTION OF MANUFACTURING DEFECTS. IT WILL NOT BE USED TO COVER LACK OF MAINTENANCE, OPERATOR MIS-USE, NORMAL WEAR, ACCIDENTS, CUSTOMER DIS-SATISFACTION OR TRANSPORTATION CHARGES TO AND FROM THE SERVICING DEALER.

FOR BEST PERFORMANCE, MINIMUM ENGINE RPM SHOULD BE 3750 UNDER NO LOAD. CONTINUOUS OPERATION BELOW 3500 RPM WILL RESULT IN ENGINE OVER-HEATING AND AN UNACCEPTABLE QUALITY CUT. RPM MAY BE REDUCED FOR TRIMMING AND/OR OTHER LIGHT LOAD DUTIES. IF THE ENGINE CANNOT MAINTAIN 3500 RPM, UNDER A LOAD, OPERATOR SHOULD REDUCE GROUND SPEED, CONSULT MANUAL, AND/OR CONTACT YOUR DEALER FOR ANY QUESTIONS OR NECESSARY ADJUSTMENTS. 800289

24



25



26

REF	PART#	DESCRIPTION	Qty
22	800288	Decal - Safety Pan Floor IE/SE/Magnum	1
23	800257	Decal - Throttle Iron Eagle	1
24	800289	Decal - Fuel Caution/NOTICE IE 2011	1
25	800195	Decal - Front/Rear Iron Eagle	2
26	800072	Decal - 44" Cut	2

DIXIE CHOPPER™

MAGNUM DECAL PLACEMENT



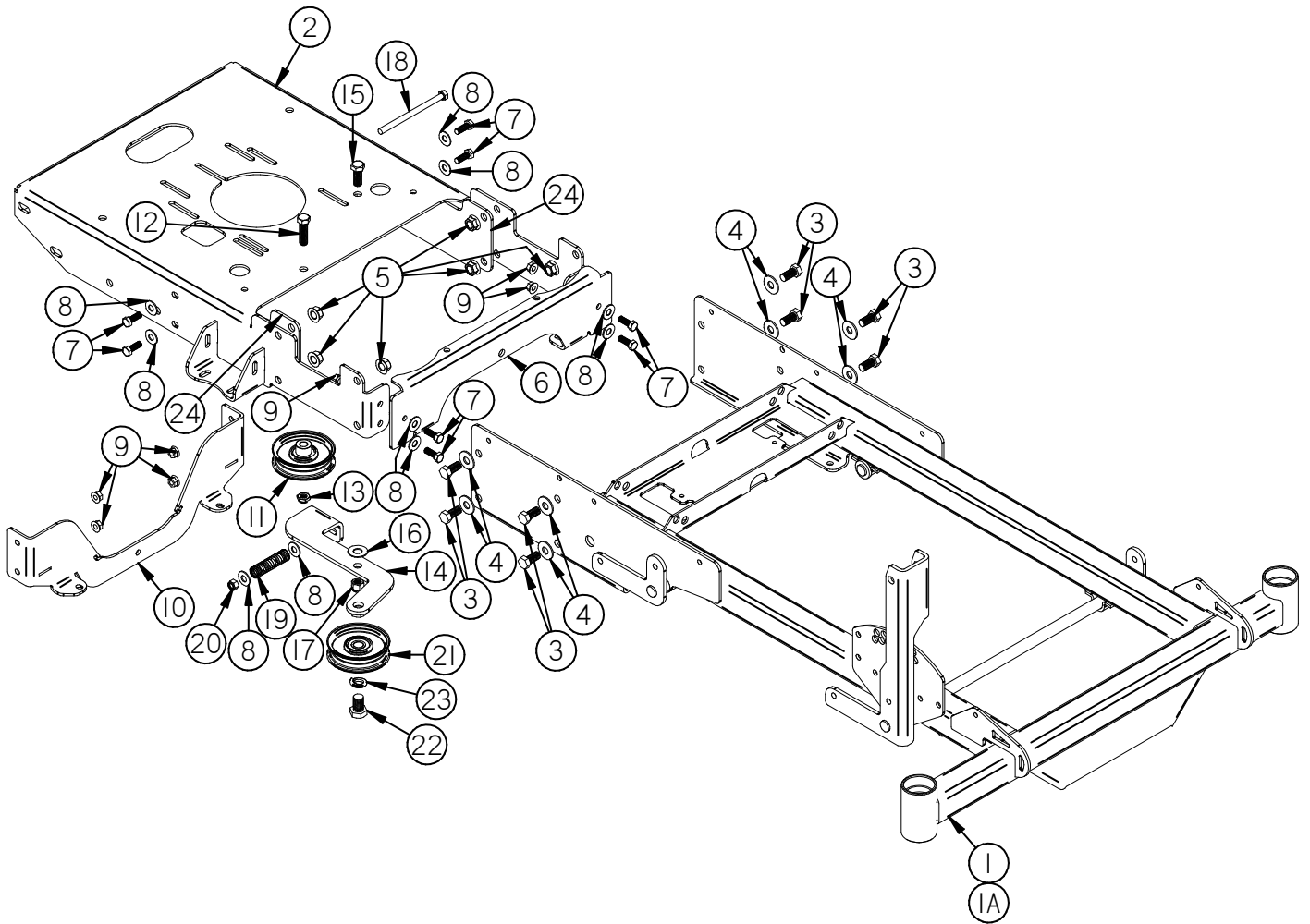
DIXIE CHOPPER™

IRON EAGLE DECAL PLACEMENT



DIXIE CHOPPER™

FRAME ASSEMBLY

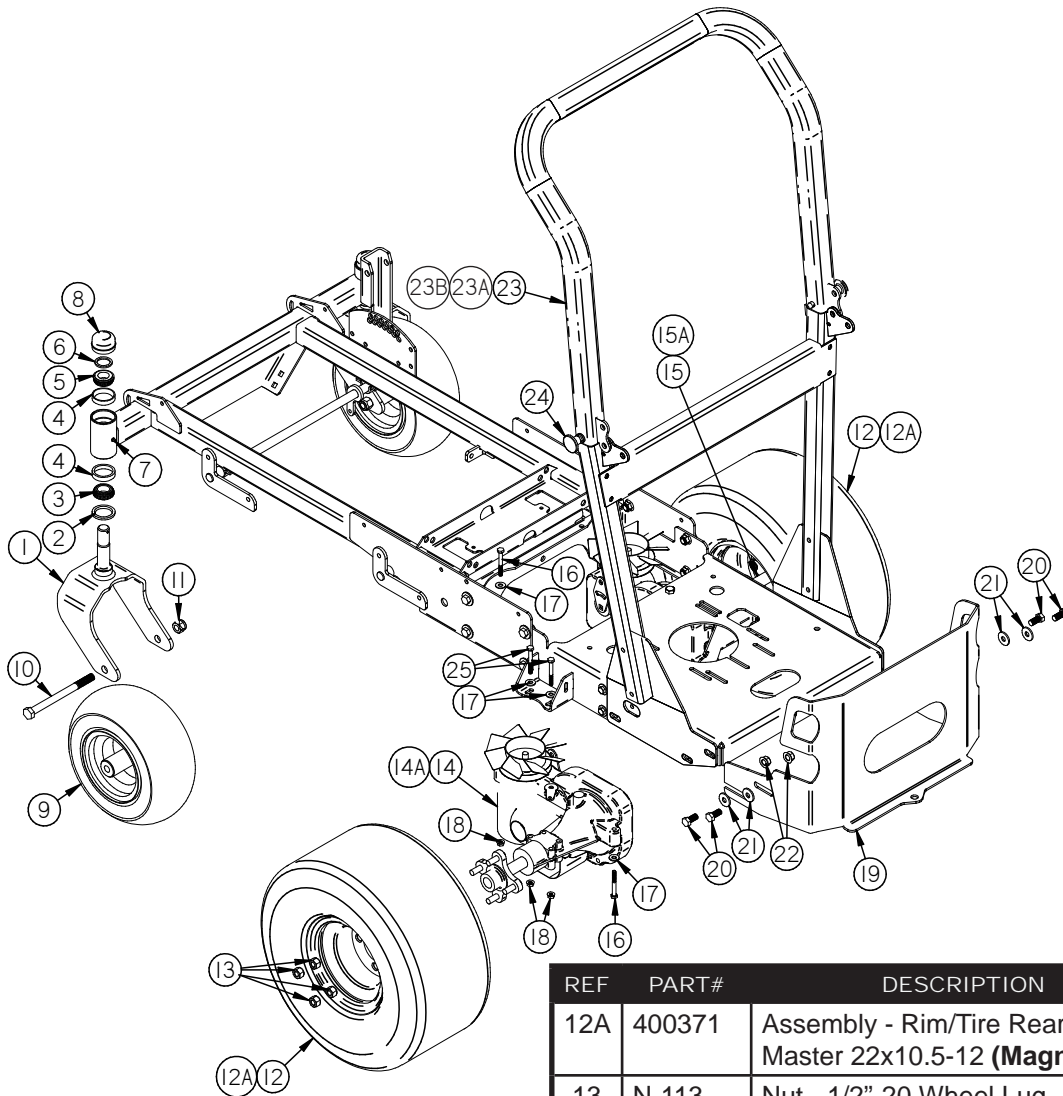


REF	PART#	DESCRIPTION	Qty
1	100219	Weldment - Frame IE Front 44"/50"	1
1A	100223	Weldment - Frame IE Front 60"	1
2	100218	Weldment - Frame IE Rear	1
3	B-117	Bolt - 1/2-13X1-1/4 HHCS FT Gr.5	8
4	W-109	Washer - 1/2" Flat	8
5	N-157	Nut - 1/2"-13 Whiz Flange	8
6	200241	Mount - Transmission IE Front	1
7	B-108	Bolt - 3/8"-16 X 1"	8
8	W-104	Washer - 3/8" Flat	10
9	N-108	Nut - 3/8"-16 Whiz Flange	8
10	100272	Mount - Transmission Rear IE/Mag	1
11	200238	Pulley - Idler Flat 3.75 No center	1

REF	PART#	DESCRIPTION	Qty
12	B-139	Bolt - 1/2"-13 X 1-3/4"	1
13	N-126	Nut - 1/2"-13 Nyloc Jam	1
14	200243	Weldment - Idler Pump IE	1
15	B-117	Bolt - 1/2"-13 X 1-1/4"	1
16	W-171	Washer - 1/2" Teflon Washer	1
17	N-143	Nut - 1/2"-13 Nyloc	1
18	B-314	Bolt - 3/8"-16 X 5-1/2" Full Thread	1
19	68280	Spring	1
20	N-107	Nut - 3/8"-16 Nyloc	1
21	200239	Pulley - Idler Flat 3.75 W/Center	1
22	B-120	Bolt - 5/8"-11 X 1"	1
23	W-111	Washer - 5/8" Lock	1
24	100271	Plate - Reinforcement Frame	2

DIXIE CHOPPER™

WHEELS & TIRES ASSEMBLY

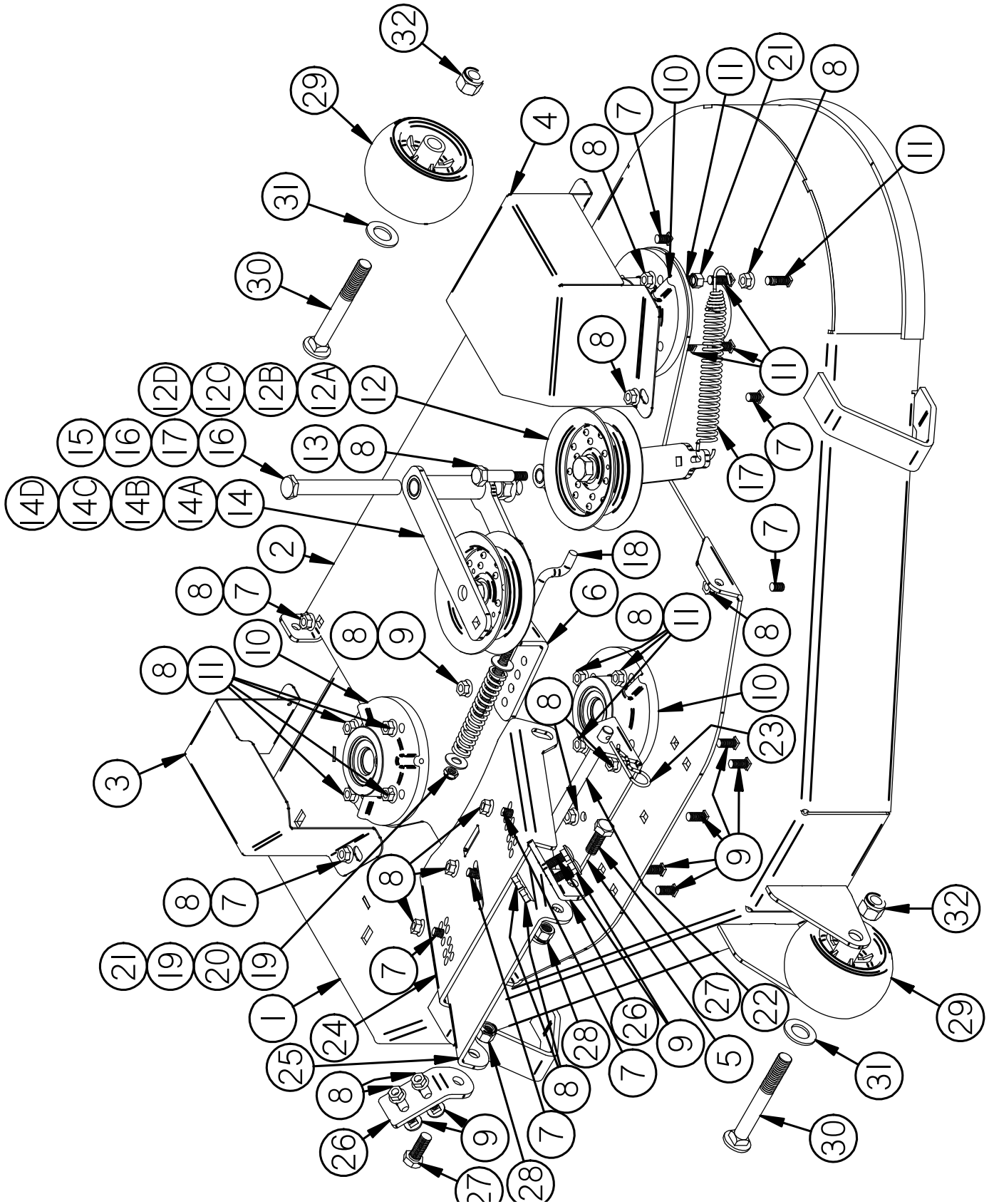


REF	PART#	DESCRIPTION	Qty
1	100220	Weldment - Front Fork	2
2	10208	Seal - Front Fork	2
3	97171	Bearing - Bottom Front Fork	2
4	10206	Race - Bearing Front Fork	4
5	10207	Bearing - Top Front Fork	2
6	W-131	Washer - 1"ID X 1-1/2"OD X 1/8"TH	2
7	F-100	Fitting - 3/16" Drive-In Grease	2
8	10220	Cap - Dust Front Fork	2
9	400438	Assembly - Wheel Front Small	2
10	B-122	Bolt - 5/8"-11 X 7-1/2"	2
11	N-115	Nut - 5/8"-11 Nyloc	2
12	400296	Assembly - Complete TurfTech 20x10x8 (Iron Eagle)	2

REF	PART#	DESCRIPTION	Qty
12A	400371	Assembly - Rim/Tire Rear HD Turf Master 22x10.5-12 (Magnum)	2
13	N-113	Nut - 1/2"-20 Wheel Lug	8
14	200237	Transaxle - LH 2800 (Iron Eagle)	1
14A	200277	Transaxle - LH (Magnum)	1
15	200236	Transaxle - RH 2800 (Iron Eagle)	1
15A	200278	Transaxle - RH (Magnum)	1
16	B-173	Bolt - 5/16"-18 X 2-1/2"	4
17	W-113	Washer - 5/16" Flat	8
18	N-103-W	Nut - 5/16"-18 Whiz Flange	8
19	400437	Guard - Rear IE/Magnum 2011	1
20	B-138	Bolt - 1/2"-13 X 1"	4
21	W-166	Washer - 7/16" Flat	4
22	N-157	Nut - 1/2"-13 Whiz Flange	4
23	900392	Asm - Bar Roll Mag/IE/SE 34/44	1
23A	900412	Kit - Hardware Rollbar IE/MAG	1
23B	902147	Channel - for .120 thick tube FV	2
24	900410	Pin Assy - Full Vision Rollbar	2
25	B-176	Bolt - 5/16-18X3 HHCS	4

DIXIE CHOPPER™

IRON EAGLE 44" DECK ASSEMBLY



DIXIE CHOPPER™

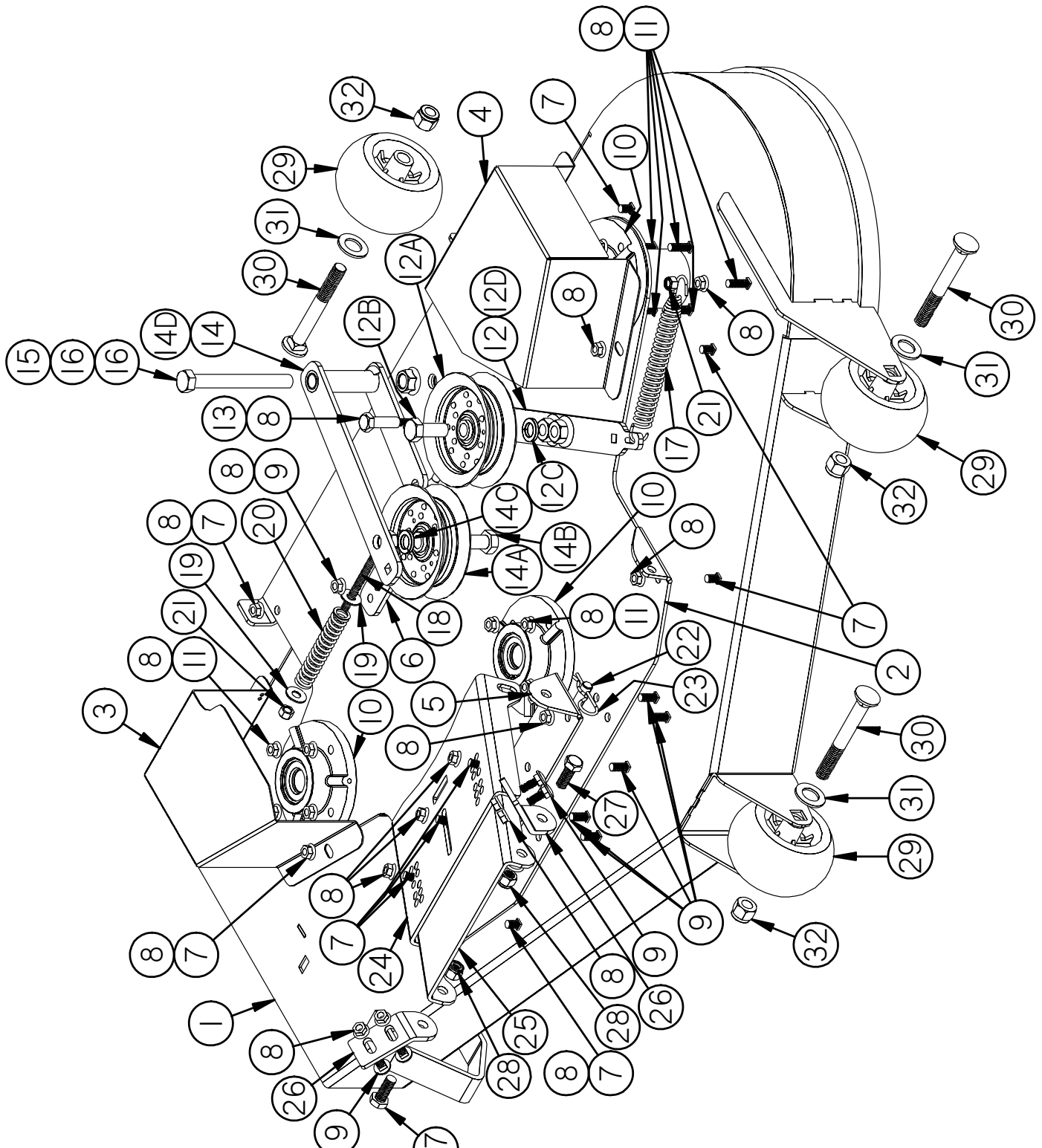
IRON EAGLE 44" DECK ASSEMBLY (CONT'D)

REF#	PART#	DESCRIPTION	QTY
15	B-306	Bolt - 5/8"-11 X 5-1/2"	1
16	N-195	Nut - 5/8"-11 Whiz Flange	2
17	300324	Spring	1
18	300184	Rod - Tension Idler Deck	1
19	W-104	Washer - 3/8" Flat	2
20	68280	Spring - #40	1
21	N-107	Nut - 3/8"-16 Nyloc	2
22	300485	Rod - Stabilizer Deck	1
23	30213	Clip - Hairpin #27	2
24	300548	Plate - Stabilizer Deck Slotted	1
25	300549	Plate - Stabilizer Deck	1
26	300483	Tab - Bracket Stabilizer	2
27	B-117	Bolt - 1/2"-13 X 1-1/4"	2
28	N-143	Nut - 1/2"-13 Nyloc	2
29	300365	Roller - Anti-Scalp	2
30	B-278	Bolt - 5/8"-11 X 5"	2
31	W-194	Washer - 7/8" SAE Flat, Zinc	2
32	N-115	Nut - 5/8"-11 Nyloc	2

REF#	PART#	DESCRIPTION	QTY
	300520	Assembly - Deck 44"	
1	300492	Weldment - Deck	1
2	300493	Weldment - Plate Top	1
3	300494	Guard - Pulley Right	1
4	300495	Guard - Pulley Left	1
5	300481	Bracket - Stabilizer	1
6	300528	Bracket - Tension	1
7	B-110	Bolt - 3/8"-16 X 3/4"	11
8	N-108	Nut - 3/8"-16 Whiz Flange	35
9	B-135	Bolt - 3/8"-16 X 1"	10
10	300441	Assembly - Hub Deck	
11	B-136	Bolt - 3/8"-16 X 1-1/4"	13
12	300509	Assembly - Idler Deck	1
12A	300401	Pulley - Idler Flat Deep	1
12B	B-264	Bolt - 5/8"- 11 X 1-1/2"	1
12C	W-111	Washer - Lock	1
12D	300510	Weldment - Idler Deck	1
13	B-118	Bolt - 1/2"-13 x 2-1/4" Shoulder	1
14	300506	Assembly - Arm Idler Deck-Engine	1
14A	300401	Pulley - Idler Flat Deep	1
14B	B-264	Bolt - 5/8"- 11 X 1-1/2"	1
14C	W-111	Washer - Lock	1
14D	300507	Weldment - Arm Idler Engine-Deck	1

DIXIE CHOPPER™

50" DECK ASSEMBLY



DIXIE CHOPPER™

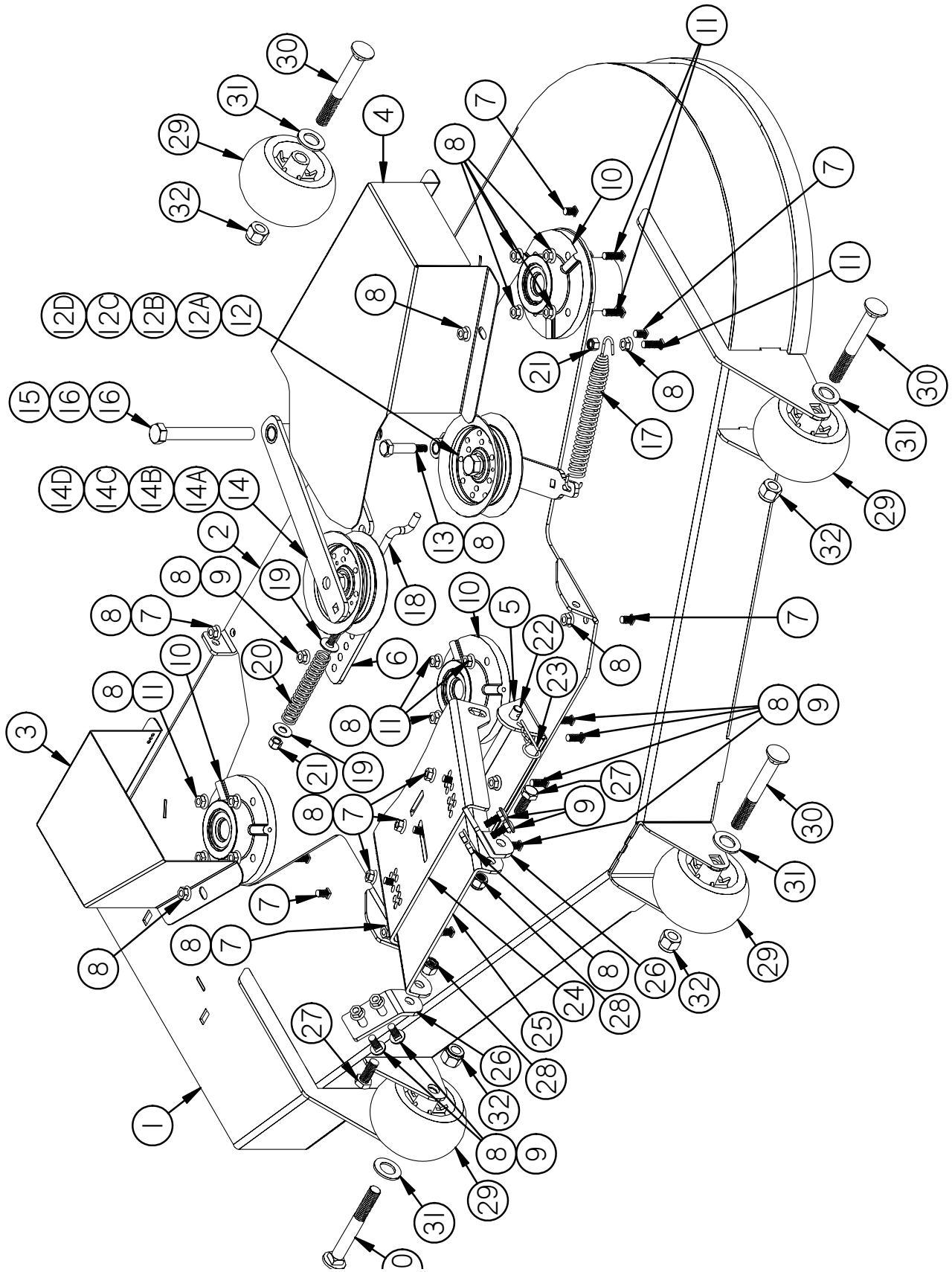
50" DECK ASSEMBLY (CONT'D)

REF#	PART#	DESCRIPTION	QTY
15	B-306	Bolt - 5/8"-11 X 5-1/2"	1
16	N-195	Nut - 5/8"-11 Whiz Flange	2
17	300324	Spring	1
18	300184	Rod - Tension Idler Deck	1
19	W-104	Washer - 3/8" Flat	2
20	68280	Spring - #40	1
21	N-107	Nut - 3/8"-16 Nyloc	2
22	300485	Rod - Stabilizer Deck	1
23	30213	Clip - Hairpin #27	2
24	300548	Plate - Stabilizer Deck Slotted	1
25	300549	Plate - Stabilizer Deck	1
26	300483	Tab - Bracket Stabilizer	2
27	B-117	Bolt - 1/2"-13 X 1-1/4"	2
28	N-143	Nut - 1/2"-13 Nyloc	2
29	300365	Roller - Anti-Scalp	3
30	B-278	Bolt - 5/8"-11 X 5"	3
31	W-194	Washer - 7/8" SAE Flat, Zinc	3
32	N-115	Nut - 5/8"-11 Nyloc	3

REF#	PART#	DESCRIPTION	QTY
	300521	Assembly - Deck 50"	
1	300479	Weldment - Deck	1
2	300480	Weldment - Plate Top	1
3	300488	Guard - Pulley Right	1
4	300487	Guard - Pulley Left	1
5	300481	Bracket - Stabilizer	1
6	300528	Bracket - Tension	1
7	B-110	Bolt - 3/8"-16 X 3/4"	11
8	N-108	Nut - 3/8"-16 Whiz Flange	35
9	B-135	Bolt - 3/8"-16 X 1"	10
10	300441	Assembly - Hub Deck	
11	B-136	Bolt - 3/8"-16 X 1-1/4"	13
12	300509	Assembly - Idler Deck	1
12A	300401	Pulley - Idler Flat Deep	1
12B	B-264	Bolt - 5/8"- 11 X 1-1/2"	1
12C	W-111	Washer - Lock	1
12D	300510	Weldment - Idler Deck	1
13	B-118	Bolt - 1/2"-13 x 2-1/4" Shoulder	1
14	300482	Assembly - Arm Idler Deck-Engine	1
14A	300401	Pulley - Idler Flat Deep	1
14B	B-264	Bolt - 5/8"- 11 X 1-1/2"	1
14C	W-111	Washer - Lock	1
14D	300508	Weldment - Arm Idler Engine-Deck	1

DIXIE CHOPPER™

60" DECK ASSEMBLY



DIXIE CHOPPER™

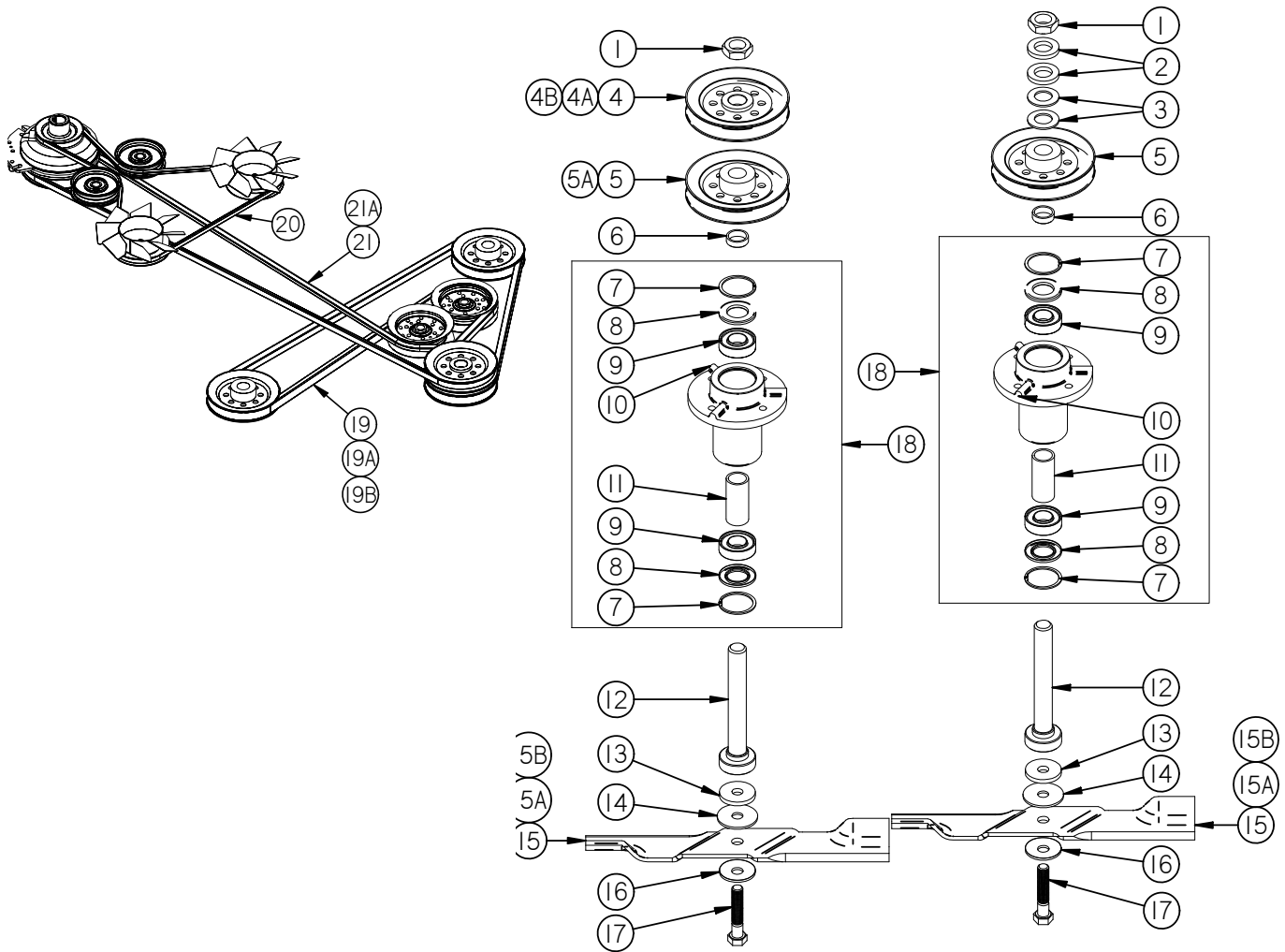
60" DECK ASSEMBLY (CONT'D)

REF#	PART#	DESCRIPTION	QTY
15	B-306	Bolt - 5/8"-11 X 5-1/2"	1
16	N-195	Nut - 5/8"-11 Whiz Flange	2
17	300324	Spring	1
18	300184	Rod - Tension Idler Deck	1
19	W-104	Washer - 3/8" Flat	2
20	68280	Spring - #40	1
21	N-107	Nut - 3/8"-16 Nyloc	2
22	300485	Rod - Stabilizer Deck	1
23	30213	Clip - Hairpin #27	2
24	300548	Plate - Stabilizer Deck Slotted	1
25	300549	Plate - Stabilizer Deck	1
26	300483	Tab - Bracket Stabilizer	2
27	B-117	Bolt - 1/2"-13 X 1-1/4"	2
28	N-143	Nut - 1/2"-13 Nyloc	2
29	300365	Roller - Anti-Scalp	4
30	B-278	Bolt - 5/8"-11 X 5"	4
31	W-194	Washer - 7/8" SAE Flat, Zinc	4
32	N-115	Nut - 5/8"-11 Nyloc	4

REF#	PART#	DESCRIPTION	QTY
	300522	Assembly - Deck 60"	
1	300490	Weldment - Deck	1
2	300491	Weldment - Plate Top	1
3	300496	Guard - Pulley Right	1
4	300497	Guard - Pulley Left	1
5	300481	Bracket - Stabilizer	1
6	300528	Bracket - Tension	1
7	B-110	Bolt - 3/8"-16 X 3/4"	11
8	N-108	Nut - 3/8"-16 Whiz Flange	35
9	B-135	Bolt - 3/8"-16 X 1"	10
10	300441	Assembly - Hub Deck	
11	B-136	Bolt - 3/8"-16 X 1-1/4"	13
12	300509	Assembly - Idler Deck	1
12A	300401	Pulley - Idler Flat Deep	1
12B	B-264	Bolt - 5/8"- 11 X 1-1/2"	1
12C	W-111	Washer - Lock	1
12D	300510	Weldment - Idler Deck	1
13	B-118	Bolt - 1/2"-13 x 2-1/4" Shoulder	1
14	300482	Assembly - Arm Idler Deck-Engine	1
14A	300401	Pulley - Idler Flat Deep	1
14B	B-264	Bolt - 5/8"- 11 X 1-1/2"	1
14C	W-111	Washer - Lock	1
14D	300508	Weldment - Arm Idler Engine-Deck	1

DIXIE CHOPPER™

SPINDLE HUB ASSEMBLIES

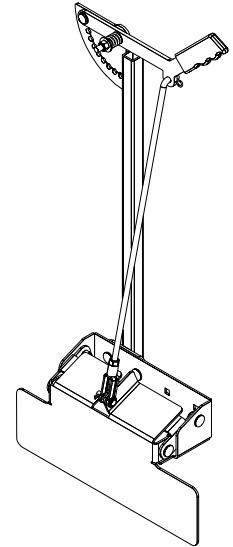
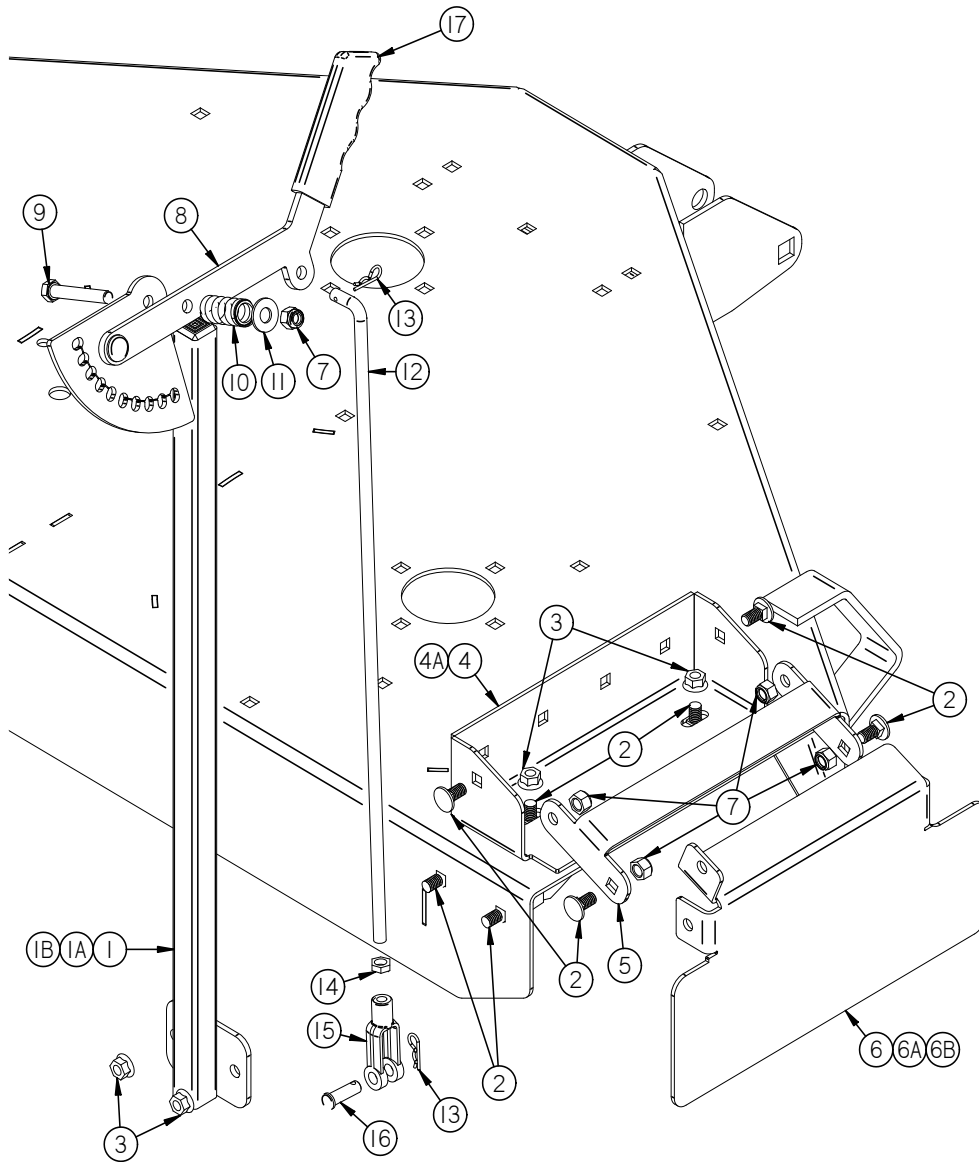


REF	PART#	DESCRIPTION	Qty
1	N-167	1"-14 Jam Nut Zinc	3
2	W-146	Washer - 1" X 1/4" Thick	4
3	W-137	1" X 2" Belleville Washer	4
4	300511	Pulley - Center Top (f/44")	1
4A	300501	Pulley - Center Top (f/50")	1
4B	9907675X100S	Pulley - Center Top (f/60")	1
5	9907525X100S	Pulley - Split 5-1/4" X 1" Bore (f/44"/50")	3
5	9907525X100S	Pulley - Split 5-1/4" X 1" Bore (f/60")	2
5A	300511	Pulley - 5-1/4" (f/60" Center Bottom)	1
6	300448	Bushing - Hub Deck Sealed	3
7	788080	Ring - Retaining	6
8	300443	Seal - Hub Deck	6
9	30218	Bearing - Hub Deck	6
10	F-102	Fitting - 1/4"-28 Grease	3

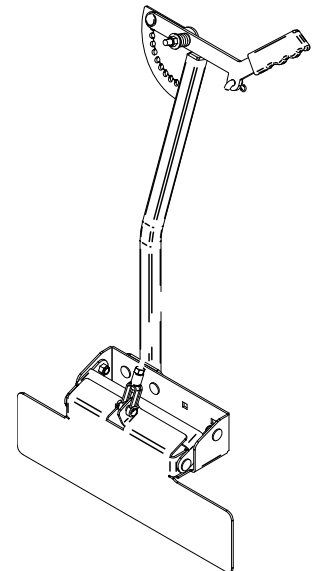
REF	PART#	DESCRIPTION	Qty
11	30219	Spacer - Hub Deck	3
12	30217	Shaft - Short Hub Deck	3
13	W-182	Washer - 5/8" X 1/4" Thick	3
14	W-101	Washer - 5/8" Fiber	3
15	30227-50X	Blade - X-Style 50" (f/44")	3
15A	30227-52X	Blade - X-Style 52" (f/50")	3
15B	30227-62X	Blade - X-Style 62" (f/60")	3
16	W-100	Washer - 5/8" Belleville	3
17	B-121-L	Bolt - 5/8"-18 X 3"	3
18	300440	Assembly - Hub Deck Sealed (Inc. Items in Box)	3
19	2006B128R	Belt - Deck 60"	1
19A	2006B112R	Belt - Deck 50"	1
19B	2008B101R	Belt - Deck 44"	1
20	2006A62R	Belt - Engine - Pump	1
21	2010B100W	Belt - Engine - Deck 44"/60"	1
21A	2010B97W	Belt - Engine - Deck 50"	1

DIXIE CHOPPER™

OCDC ASSEMBLIES



50" OCDC ASSEMBLY



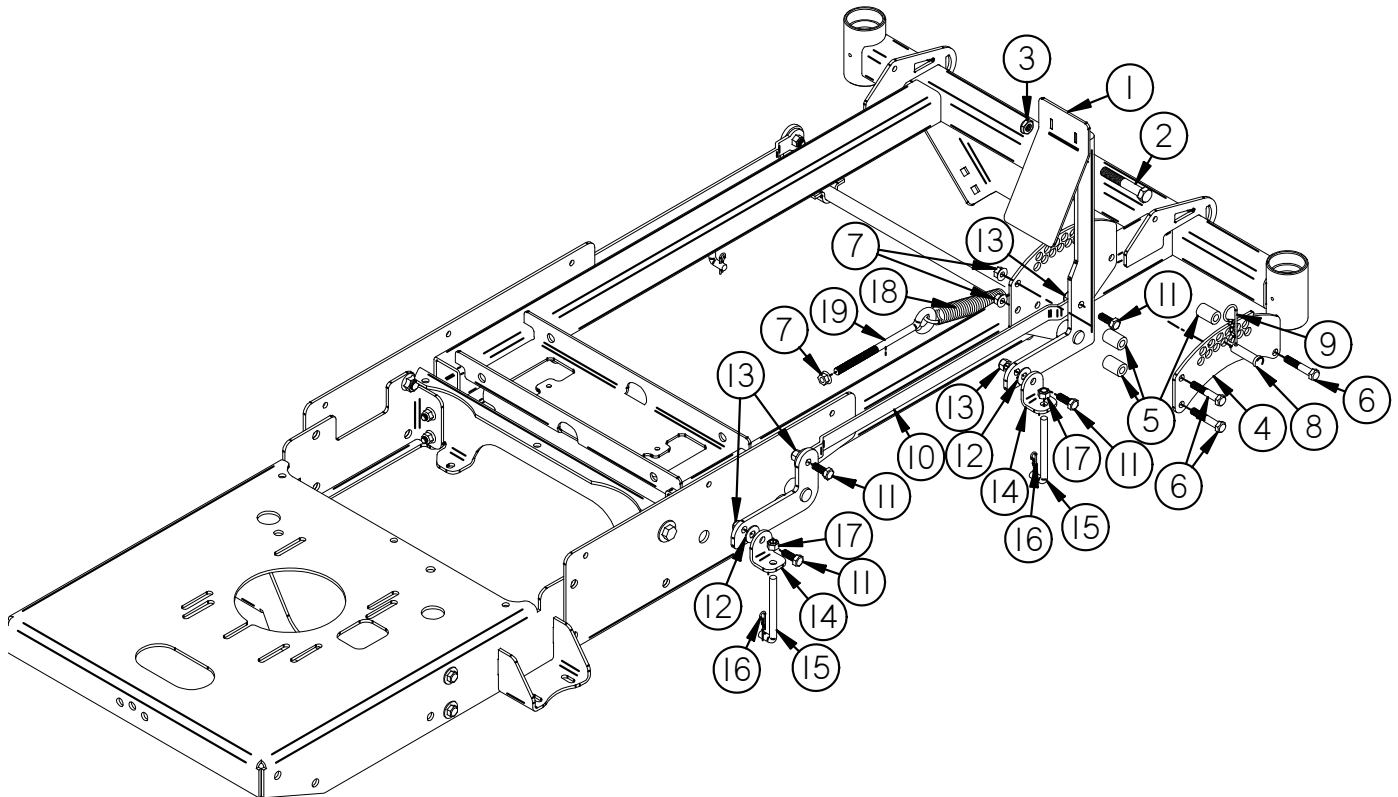
60" OCDC ASSEMBLY

REF	PART#	DESCRIPTION	Qty
	300498	Assembly - OCDC 44"	
	300499	Assembly - OCDC 50"	
	300500	Assembly - OCDC 60"	
1	300532	Weldment - Riser 44"	1
1A	300539	Weldment - Riser 50"	1
1B	300541	Weldment - Riser 60"	1
2	B-110	Bolt - 3/8"-16 X 3/4" Carriage	8
3	N-108	Nut - 3/8"-16 Whiz Flange	4
4	300533	Weldment - Base 44"	1
4A	300534	Weldment - Base 50/60"	1
5	300535	Bracket - Hinge	1
6	300536	Screen 44"	1
6A	300538	Screen 50"	1
6B	300540	Screen 60"	1

REF	PART#	DESCRIPTION	Qty
7	N-107	Nut - 3/8"-16 Nyloc	5
8	900014	Weldment - Handle	
9	B-179	Bolt - 3/8"-16 X 2-1/2"	1
10	20252	Spring	1
11	W-104	Washer - 3/8" Flat	1
12	97122	Rod - Control (Includes Ref#'s-14 & 15)	1
13	20224	Clip - Hair Pin	2
14	N-150	Nut - 3/8"-24	1
15	N-155	Yoke - 3/8"-24 Adjustable	1
16	P-102	Pin - 3/8" X 1-1/4" Clevis	1

DIXIE CHOPPER™

DECK LIFT ASSEMBLY



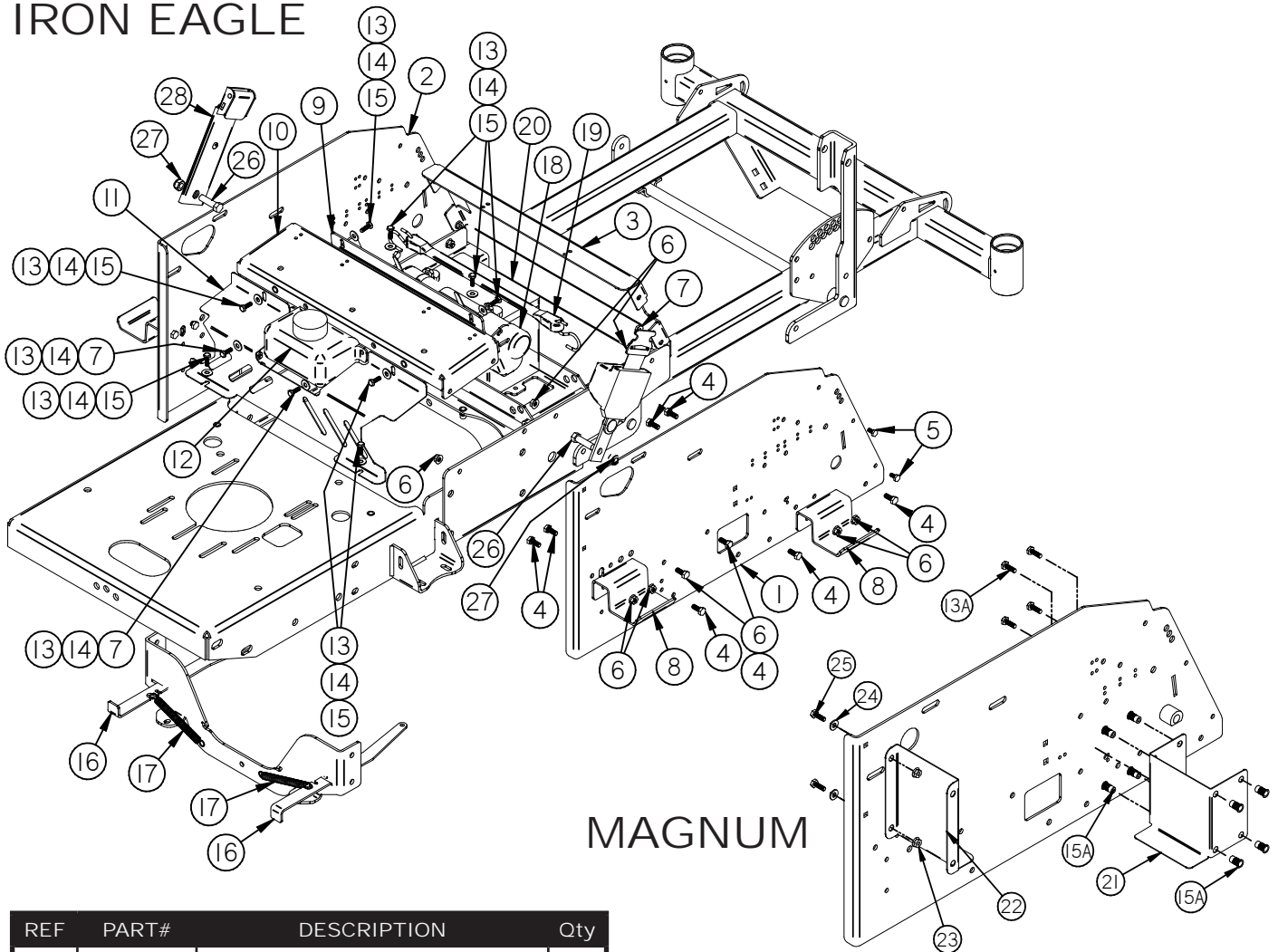
REF#	PART#	DESCRIPTION	QTY
1	300478	Weldment - Pad Pedal Foot	1
2	B-119	Bolt - 1/2"-13 X 3"	1
3	N-126	Nut - 1/2"-13 Nyloc Jam	1
4	300477	Weldment - Plate Outer Height Deck	1
5	300476	Spacer - Adjustmejnt Height	3
6	B-165	Bolt - 3/8"-16 X 2"	3
7	N-108	Nut - 3/8"-16 Whiz Flange	4
8	P-125	Pin - 1/2" X 2" Clevis	1
9	30213	Clip - #27 HAIR PIN	1
10	300475	Link - Arm Lift Deck	2

REF#	PART#	DESCRIPTION	QTY
11	B-108	Bolt - 3/8"-16 X 1"	8
12	W-125	Washer - 3/8" Nylon	4
13	N-107	Nut - 3/8"-16 Nyloc	8
14	300486	Angle - Pivot	4
15	300502	Hanger - Deck 3/8"-16 X 4-3/8" 90°	4
16	20224	Clip - Hair Pin #13	4
17	N-107	Nut - 3/8"-16 Nyloc	4
18	900100	Spring	1
19	B-241	Eye Bolt - 3/8"-16 X 6"	1

DIXIE CHOPPER™

DRIVE FRAME

IRON EAGLE



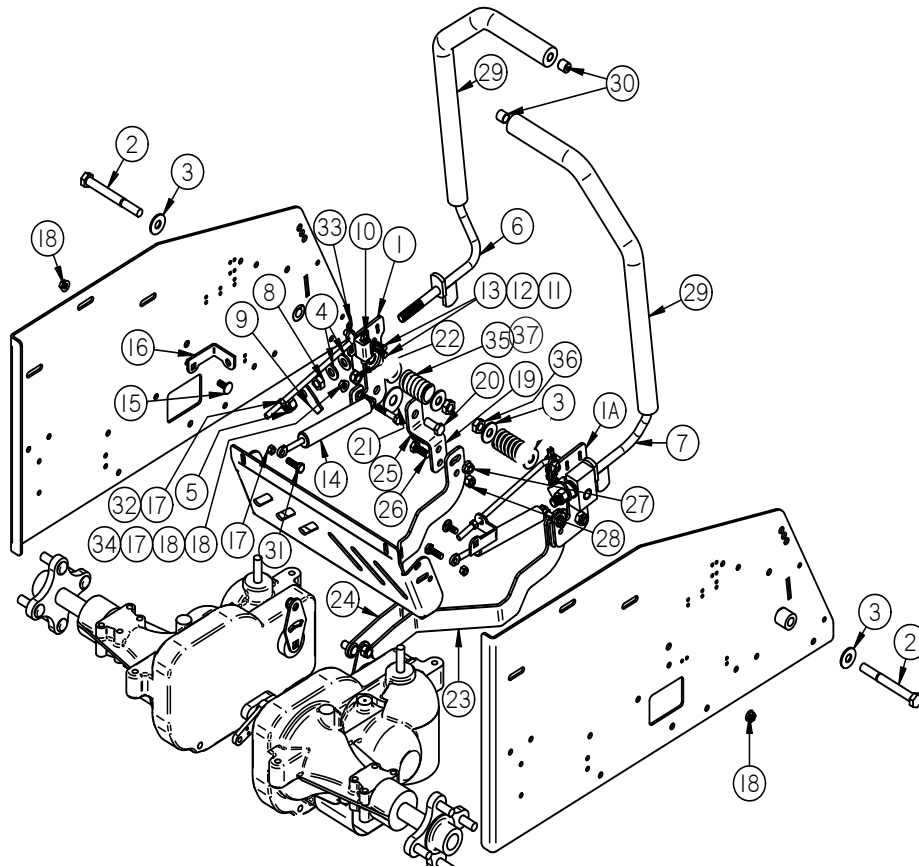
MAGNUM

REF	PART#	DESCRIPTION	Qty
1	400302	Weldment - Inner Fender Right	1
2	400303	Weldment - Inner Fender Left	1
3	400304	Panel - Front	1
4	B-107	Bolt - 5/16"-18 X 3/4"	18
5	B-101	Bolt - 1/4"-20 X 1/2"	4
6	N-103-W	Nut - 5/16"-18 Whiz Flange	18
7	N-102	Nut - 1/4"-20 Whiz Flange	6
8	400315	Bracket - Fuel Tank Support	4
9	100221	Guard - Transmission Front	1
10	400305	Cross Member - Support Seat	1
11	100222	Guard - Transmission Rear	1
12	200240	Tank - Expansion Transaxle	
13	B-102	Bolt - 1/4"-20 X 3/4" (IE)	10
13A	B-102	Bolt - 1/4"-20 X 3/4" (Magnum)	18
14	W-102	Washer - 1/4" Flat	10
15	N-152	Nut - 1/4"-20 Insert (IE)	8
15A	N-152S	Nutsert - 1/4"-20, Flng, Zn	26

REF	PART#	DESCRIPTION	Qty
16	200258	Arm - Valve Dump	2
17	400163	Spring	2
18	900015	Tube - Document	1
19	20225	Battery	1
20	20228	Strap - Battery	1
21	400465	Bracket - Support Tank Fuel 4 Gal	2
22	400466	Bracket - Tank Fuel 4 Gal Rear Mag	2
23	N-101	Nut - 1/4 - 20 SS Whiz	4
24	W-153	Washer - 1/4 SS Flat	4
25	B-209	Bolt - 1/4-20x3/4 SS Bolt	4
26	B-328	Bolt - 7/16-20X1-1/2 HHCS (IE)	2
26A	B-312	Bolt - 7/16-20X1 HHCS (Magnum)	2
27	N-135	Nut - 7/16 - 20 Nyloc	2
28	900387	Belt - Seat Retractable	1

DIXIE CHOPPER™

DRIVE FRAME COMPONENTS

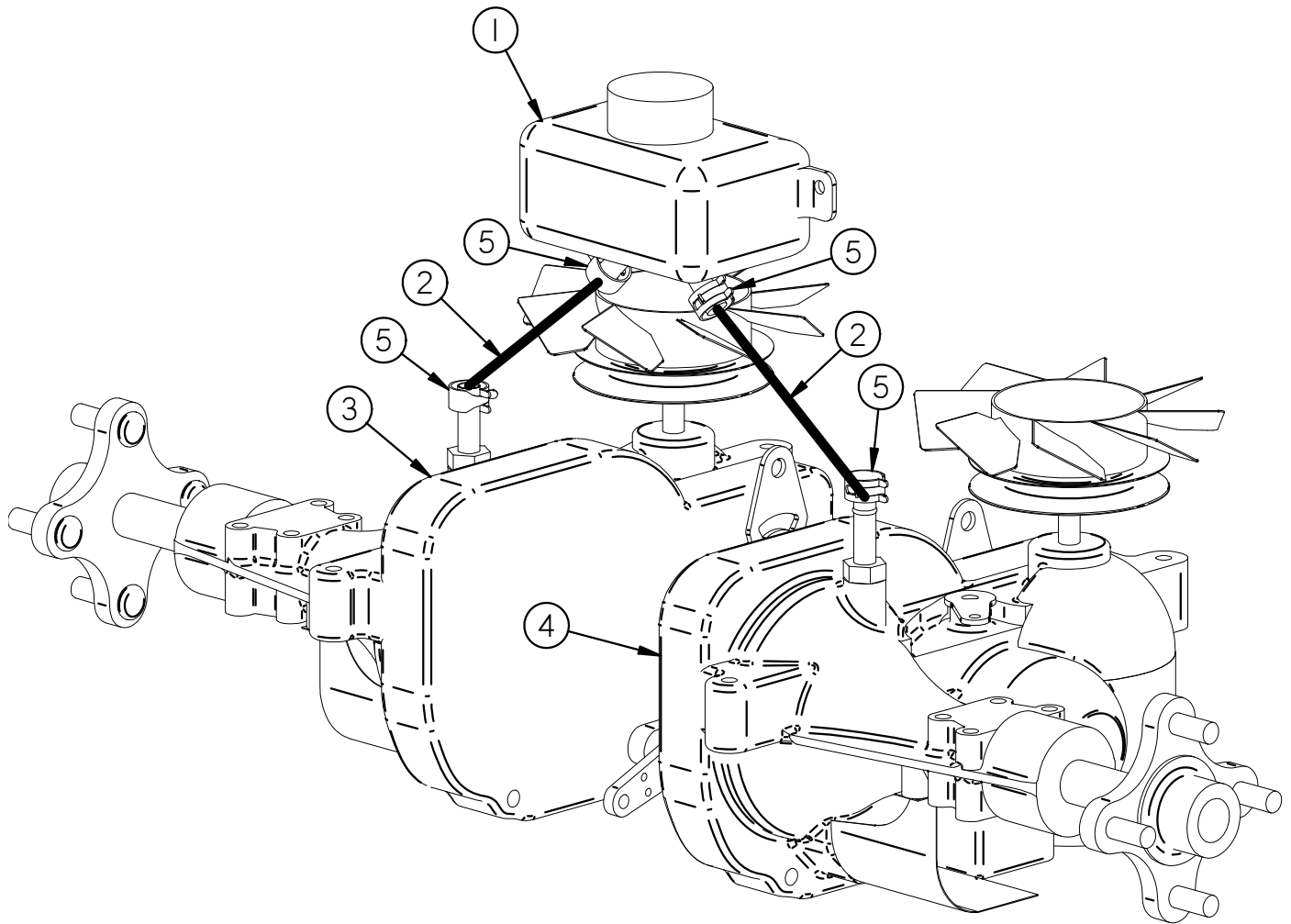


REF	PART#	DESCRIPTION	Qty
1	200271	Weldment - Block Steering Left	1
1A	200272	Weldment - Block Steering Right	1
2	B-332	Bolt - 1/2-13X5 HHCS PT Gr.5	2
3	W-109	Washer - 1/2" Flat	6
4	W-192	Washer - 1/2" Belleville X 1"OD	4
5	N-143	Nut - 1/2 - 13 Nyloc	2
6	400279	Assembly - Lever Steering LH	1
7	400278	Assembly - Lever Steering RH	1
8	N-111	Nut - 1/2"-13 Jam	2
9	200247	Tab - Actuator Switch Steering	2
10	500013	Switch - Lever Steering	2
11	B-258	Bolt - M5-.8 X 16mm	4
12	W-180	Washer - M5 Split Lock	4
13	N-179	Nut - M5-.8	4
14	900267	Damper - Steering	2
15	B-104	Bolt - 5/16"-18 X 3/4" Carriage	2
16	200273	Bracket - Guide Rod Steering	2
17	N-131	Nut - 5/16"-18 Nyloc	6
18	N-103-W	Nut - 5/16"-18 Whiz Flange	6

REF	PART#	DESCRIPTION	Qty
19	200255	Bracket - Arm Control	2
20	B-138	Bolt - 1/2-13X1 HHCS	2
21	W-140	Washer - 5/8" Nylon	2
22	N-126	Nut - 1/2 - 13 Nyloc Jam	2
23	200256	Arm - Linkage Control Right	1
24	200257	Arm - Linkage Control Left	1
25	B-137	Bolt - 3/8"-16 X 3/4"	2
26	B-108	Bolt - 3/8"-16 X 1"	2
27	N-108	Nut - 3/8"-16 Whiz Flange	2
28	N-107	Nut - 3/8"-16 Nyloc	2
29	400201	Grip - Foam	
30	400228	Cap - End Plastic Black	
31	B-131	Bolt - 5/16-18 X 1 HHCS Gr.5	4
32	200270	Rod - Stop Forward Steering	2
33	20224	Clip - Pin Hair #13	2
34	B-105	Bolt - 5/16-18x1 3/4 HHCS	2
35	100107	Spring - Suspension	2
36	N-111	1/2"-13 Hex Jam Nut	2
37	10203	Spacer - Wheel Front	2

DIXIE CHOPPER™

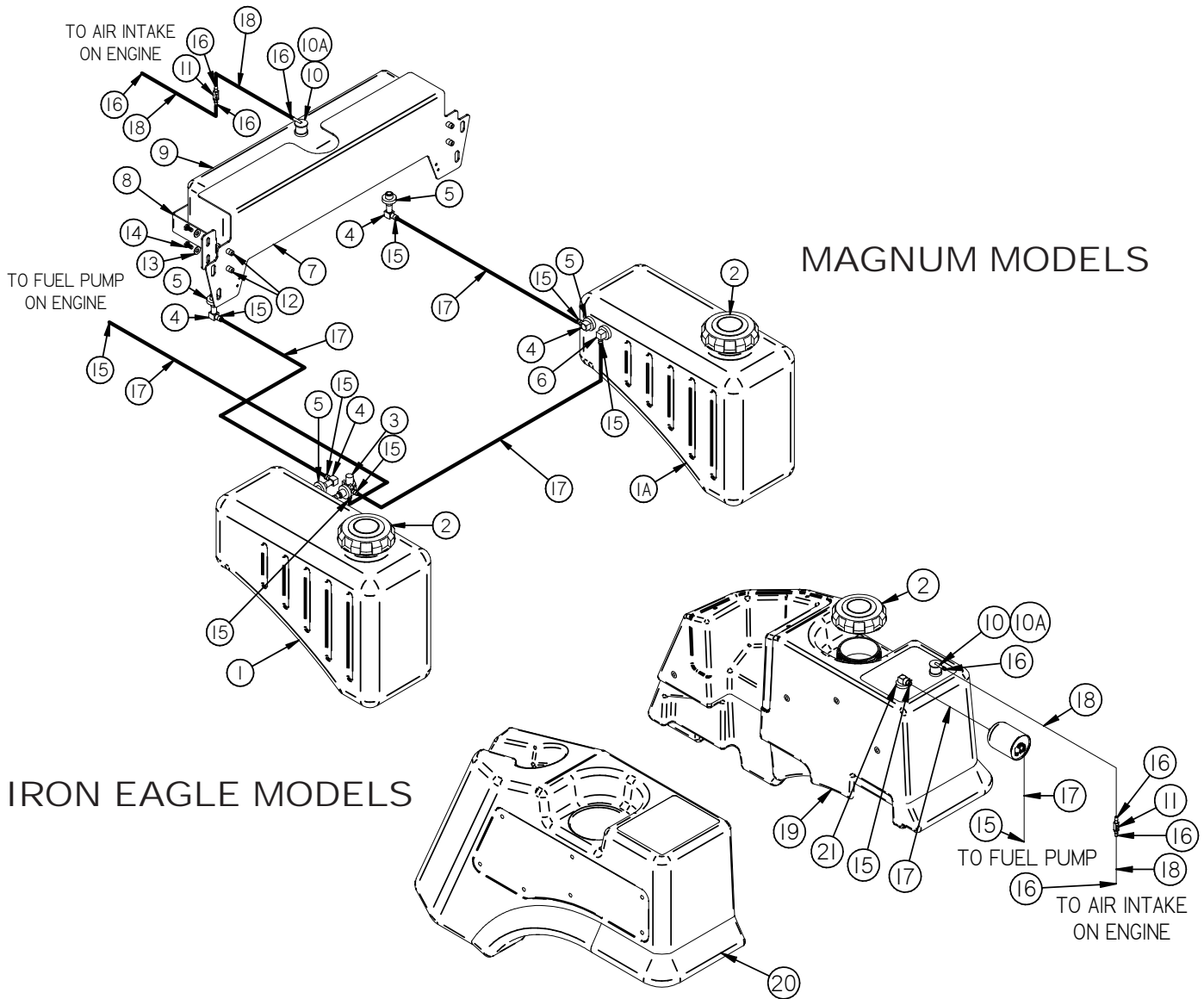
HYDRAULIC HOSE ROUTING



REF	PART#	DESCRIPTION	Qty
1	200240	Tank - Expansion Transaxle	1
2	600030	Hose - 1/2" ID. x 3/4" OD. Fuel Line	2
3	200237	Transaxle - LH 2800 (Iron Eagle)	
3A	200277	Transaxle - LH (Magnum)	
4	200236	Transaxle - RH 2800 (Iron Eagle)	
4A	200278	Transaxle - RH (Magnum)	
5	200226	Clamp - Spring Black 1/2"	4

DIXIE CHOPPER™

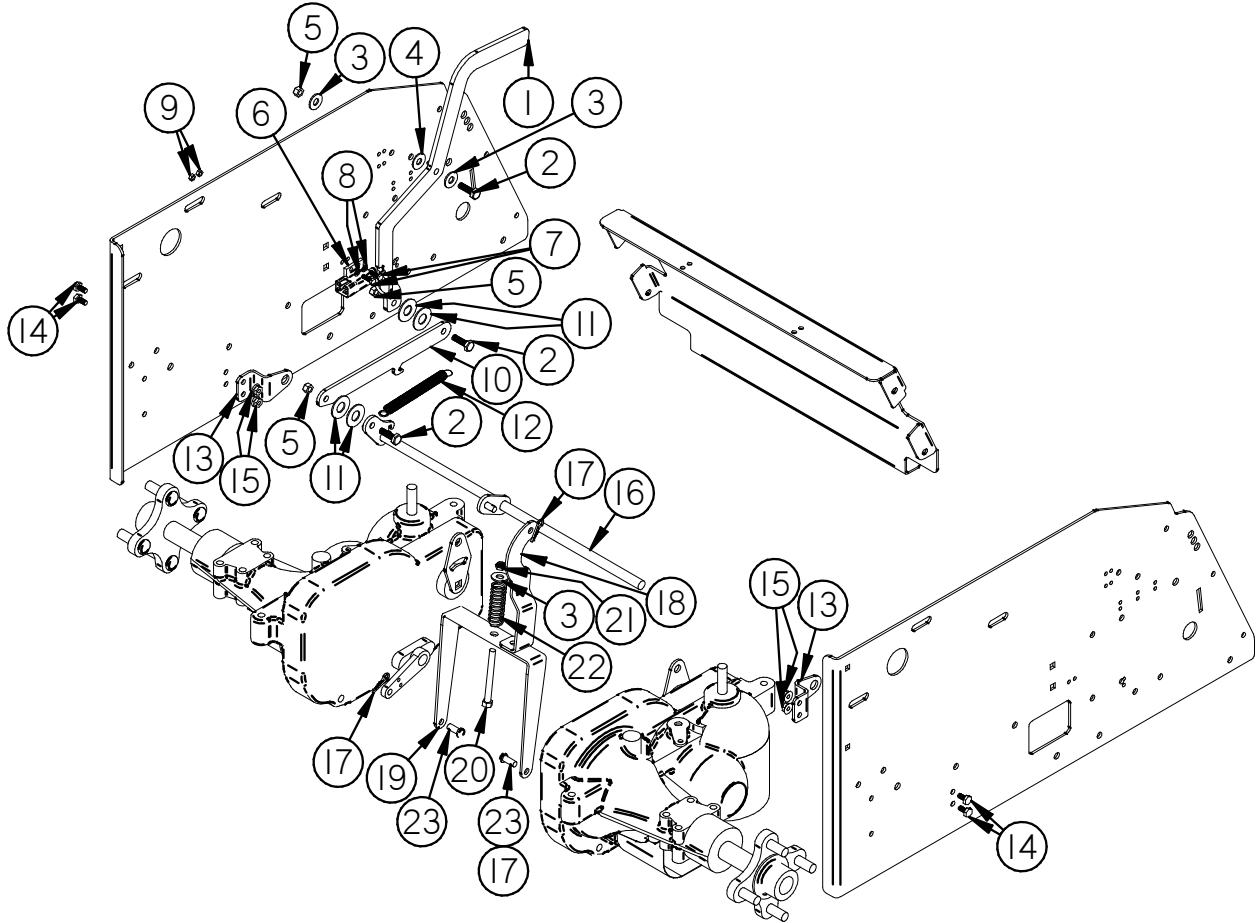
FUEL COMPONENTS



REF	PART#	DESCRIPTION	Qty	REF	PART#	DESCRIPTION	Qty
1	400482	Tank - Fuel 4 Gallon Large Neck EPA RH	1	11	600401	Valve - Anti-Backfire 3/16 X 3/16	1
1A	400481	Tank - Fuel 4 Gallon Large Neck EPA LH	1	12	N-152S	Nutsert - 1/4"-20, Flng, Znc (.027-.165)	4
2	400454	Cap - Tank Fuel 3.5 Ratchet 1 Way Check	2	13	W-153	Washer - 1/4 SS Flat	4
3	400444	Assembly - Adapter Tank 20" w/Shut-off	1	14	B-103	Bolt - 1/4-20X1/2 HHCS FT SS	4
4	72219	Fitting - Gas Tank Elbow 1/4 Barb	4	15	40213	Clamp - Hose 1/4 (red)	8
5	40220	Bushing - Gas Tank	4	16	C-125	Clamp - Spring Hose 3/16	4
6	400360	Assembly - Adapter Tank 20"	1	17	600398	Hose - Gas Line 1/4" EPA 15g/m2/24h	/in.
7	400488	Guard - Expansion Tank Small Rollbar	1	18	600399	Hose - Gas Line 3/16" EPA 15g/m2/24h	/in.
8	400490	Bracket - Mount Small Expansion Tank	1	19	400486	Tank - Fuel Molded RH f/Rollover Valve	1
9	400452	Tank - Expansion .8 Gallon	1	20	400311	Tank - Storage LH	1
10	600400	Valve - Rollover 23/64 insert	1	21	400368	Assembly - Adapter Tank 25"	1
10A	600403	Bushing - Rollover Valve 23/64 insert	1				

DIXIE CHOPPER™

PARKING BRAKE COMPONENTS

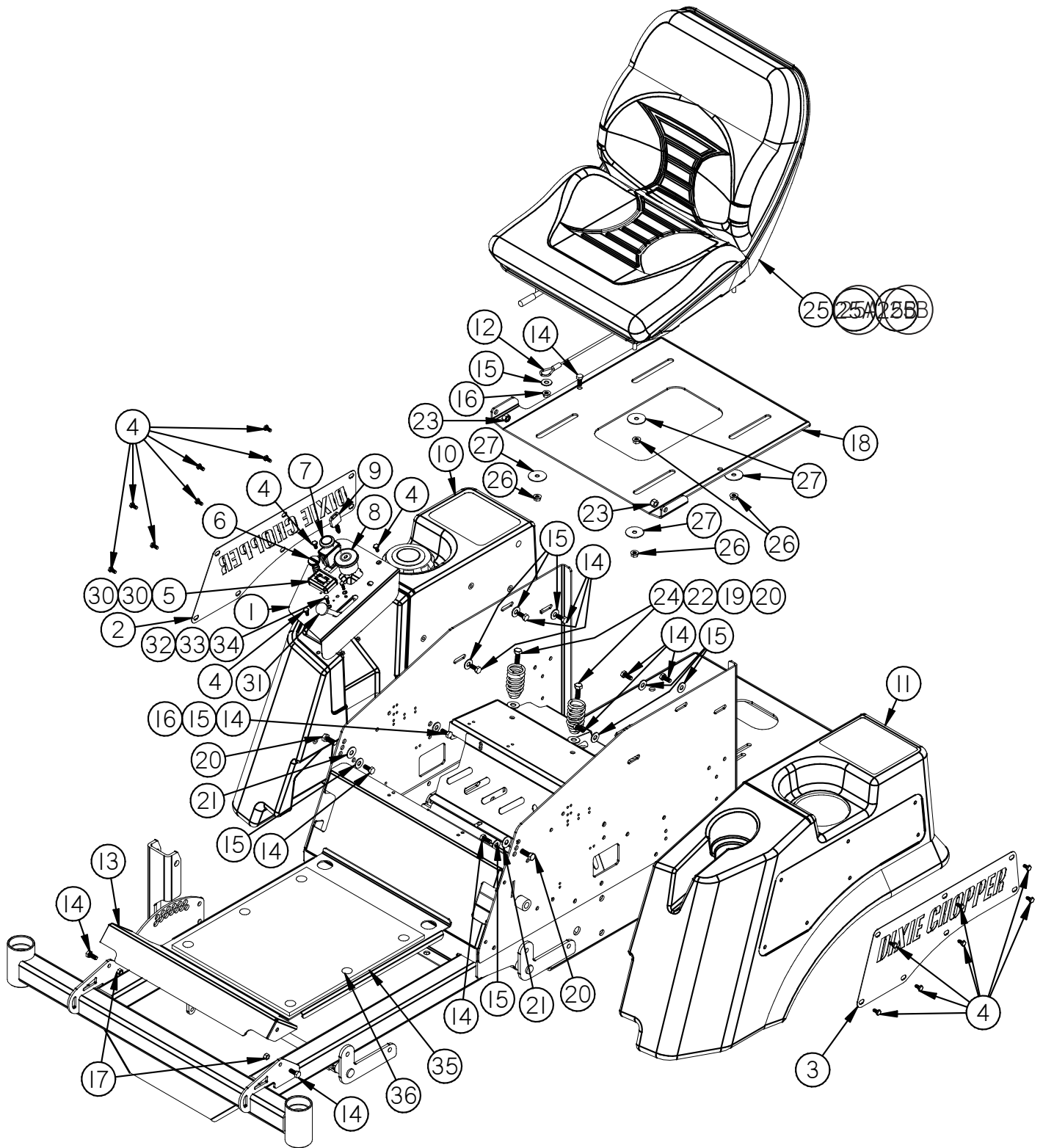


REF	PART#	DESCRIPTION	Qty
1	200248	Handle - Brake Parking IE/Magnum	1
2	B-131	Bolt - 5/16"-18 X 1"	2
3	W-113	Washer - 5/16" Flat	3
4	W-184	Washer - 5/16" Nylon Flat	1
5	N-131	Nut - 5/16"-18 Nyloc	3
6	500019	Switch - Brake	1
7	B-258	Bolt - M5-.8 X 16mm	2
8	W-180	Washer - M5 Split Lock	2
9	N-179	Nut - M5-.8	2
10	200251	Linkage - Brake Parking	1
11	W-171	Washer - 1/2" Nylon	4
12	200261	Spring	1
13	200249	Keeper - Rod Brake	2
14	B-101	Bolt - 1/4"-20 X 1/2"	4

REF	PART#	DESCRIPTION	Qty
15	N-102	Nut - 1/4"-20 Whiz Flange	1
16	200250	Weldment - Rod Brake	1
17	20224	Clip - Hair Pin #13	3
18	200254	Arm - Cam Brake Parking	1
19	200252	Connector - Brake Parking	1
20	B-176	Bolt - 5/16"-18 X 3"	1
21	N-144	Nut - 5/16"-18 Nyloc Jam	1
22	20280L-20	Spring - 20lb. Compression	1
23	P-112	Pin - 1/4"OD X 3/4" Length	2
24	400163	Spring	1
25	B-150	Bolt - 5/16"-18 X 2-1/2" Eye	1
26	200265	All Thread - 5/16"-18 X 12"	1
27	N-103	Nut - 5/16"-18	4

DIXIE CHOPPER™

IRON EAGLE BODY COMPONENTS



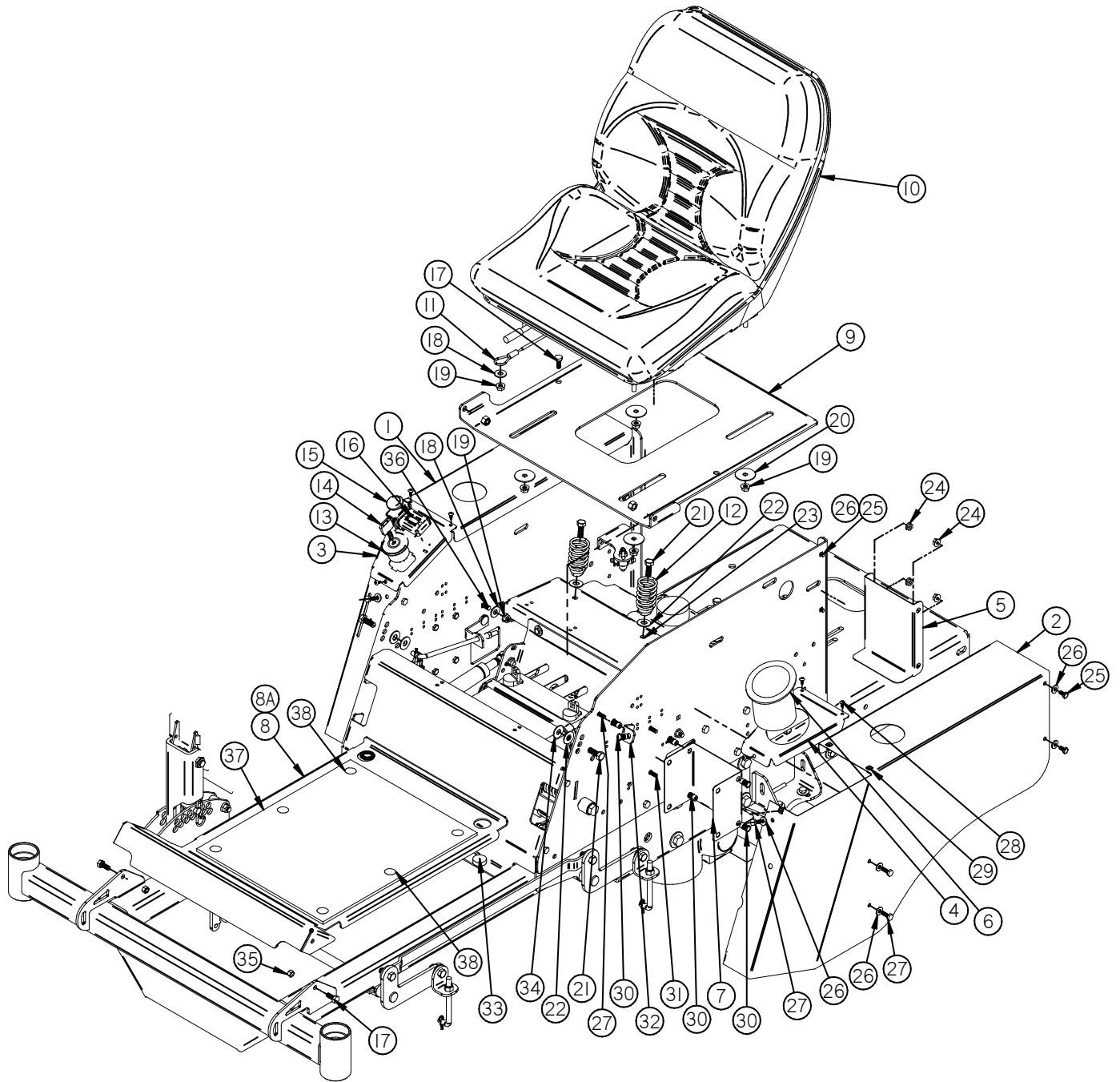
DIXIE CHOPPER™

IRON EAGLE BODY COMPONENTS (CONT'D)

REF	PART#	DESCRIPTION	Qty
1	400308	Panel - Gauge	1
2	400318	Panel - Inset Tank Right	1
3	400317	Panel - Inset Tank Left	1
4	B-103	Bolt - 1/4"-20 X 1/2" Stainless	17
5	500037	Meter - Hour/Tachometer	1
6	400227	Plug - Finishing 3/8"x15/32" plastic f/d	1
7	500016	Switch - PTO	1
8	500017	Switch - Ignition	1
9	500018	Key - Ignition Molded	1
10	400311	Tank - Storage Molded Left	
11	400298	Tank - Fuel Molded Right	
12	40218	Cable - Seat	1
13	400307	Pan - Floor	1
14	B-107	Bolt - 5/16"-18 X 3/4"	12
15	W-113	Washer - 5/16" Flat	10
16	N-103-W	Nut - 5/16"-18 Whiz Flange	2
17	N-131	Nut - 5/16"-18 Nyloc	2
18	400310	Pan - Seat	1
19	400301	Spring - Seat	3
20	B-108	Bolt - 3/8"-16 X 1"	5
21	W-125	Washer - 3/8" Nylon	2
22	W-104	Washer - 3/8" Flat	3
23	N-107	Nut - 3/8"-16 Nyloc	2
24	N-108	Nut - 3/8"-16 Whiz Flange	3
25	400388	Seat - Michigan w/armrests	1
25A	400328	Seat - Michigan Complete	
25B	400333	Kit - Armrest f/400328	
26	N-103-W	Nut - 5/16"-18 Whiz Flange	4
27	W-118	Washer - 5/16" Fender	4
28	400186	Switch - Seat	1
29	B-292	Bolt - 1/4"-20 X 3/4" Round Phillips	2
30	B-300	Screw - #4 X 3/8" Phillips Truss Head	2
31	400297	Assembly - Throttle	1
32	B-258	Bolt - M5-.8 X 16mm	2
33	W-180	Washer - M5 Lock	2
34	N-179	Nut - M5-.8	2
35	400421	Mat - Pan Floor	1
36	C-123	Clip - Christmas Tree 3/4 OAL	6

DIXIE CHOPPERTM

MAGNUM BODY COMPONENTS



DIXIE CHOPPER™

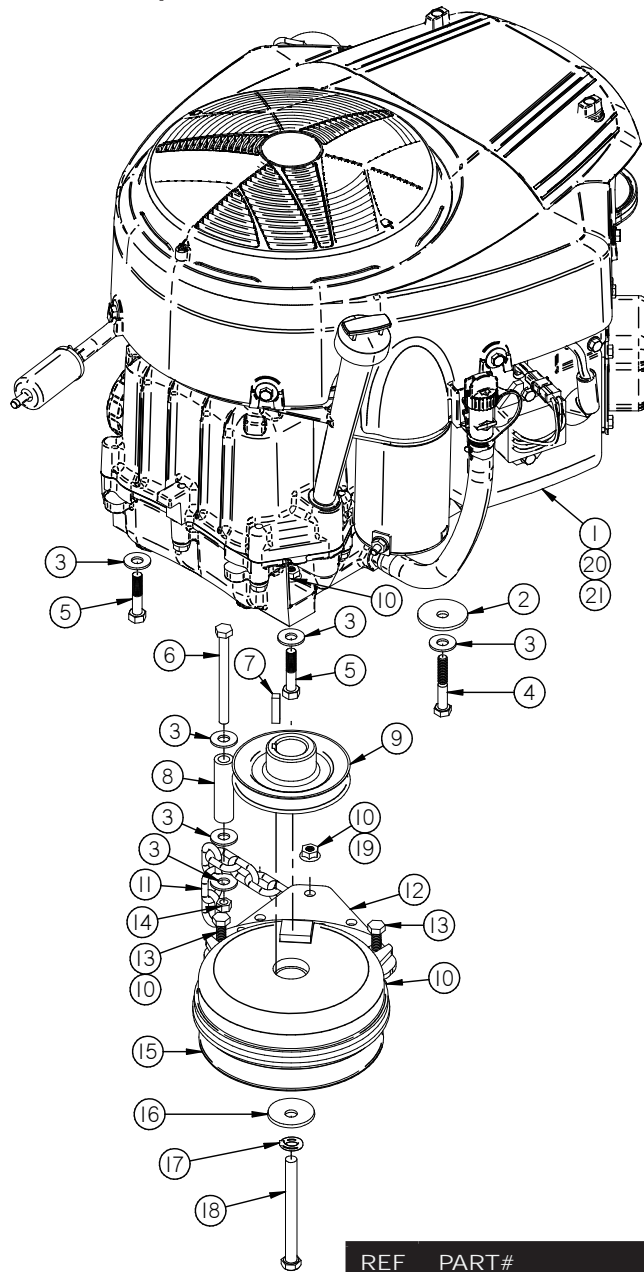
MAGNUM BODY COMPONENTS (CONT'D)

REF	PART#	DESCRIPTION	Qty
1	400460	Fender - Outer Shell RH 4 Gal	1
2	400459	Fender - Outer Shell LH 4 Gal	1
3	400467	Panel - Gauge 4 Gal Fender	1
4	400463	Holder - Cup 4 Gal Fender	1
5	400466	Bracket - Tank Fuel 4 Gal Rear Mag	
6	400112	Holder - Cup Plastic SE	1
7	400465	Bracket - Support Tank Fuel 4 Gal	
8	400307	Pan - Floor IE	1
8A	400421	Mat - Pan Floor	1
9	400310	Pan - Seat IE	1
10	400328	Seat - Michigan Complete	1
11	40218	Cable - SEAT	1
12	400301	Spring - Seat	3
13	500017	Switch - Ignition SE	1
14	500018	Key - Ignition Molded SE	1
15	500016	Switch - PTO S.E.	1
16	500037	Meter - Hour/Tach SenDec	1
17	B-107	Bolt - 5/16-18 X 3/4 HHCS	3
18	W-113	Washer - 5/16 Flat	2
19	N-103-W	Nut - 5/16 - 18 Whiz	6
20	W-118	Washer - 5/16 x 1-1/2 Fender	4
21	B-108	Bolt - 3/8-16 X 1 HHCS Bolt	5

REF	PART#	DESCRIPTION	Qty
22	W-104	Washer - 3/8 Flat	5
23	N-108	Nut - 3/8"-16 Whiz	3
24	N-101	Nut - 1/4 - 20 SS Whiz	8
25	B-103	Bolt - 1/4-20 X1/2 HHCS Stainless	8
26	W-153	Washer - 1/4 SS Flat	14
27	B-209	Bolt - 1/4-20x3/4 SS Bolt	8
28	S-118	Screw - #8 x 1/2 SS Round HD Phlp	6
29	N-190	Nut - #8 Plastic Insert	6
30	N-152	Nut - 1/4 - 20 Insert .165-.260 Grip	12
31	B-102	Bolt - 1/4-20 X 3/4 HHCS	4
32	400409	Tab - Inner Fender Magnum	2
33	900068	Pad - Rubber	3
34	W-125	Washer - 3/8 x 7/8 Nylon	2
35	N-131	Nut - 5/16 - 18 Nyloc	2
36	B-104	Bolt - 5/16-18 X 3/4 Carriage Bolt	2
37	400421	Mat - Pan Floor Magnum, IE, SE 34/44	1
38	C-111	Hook - Christmas Tree Plastic Cap	6

DIXIE CHOPPER™

27 Hp BRIGGS ENGINE

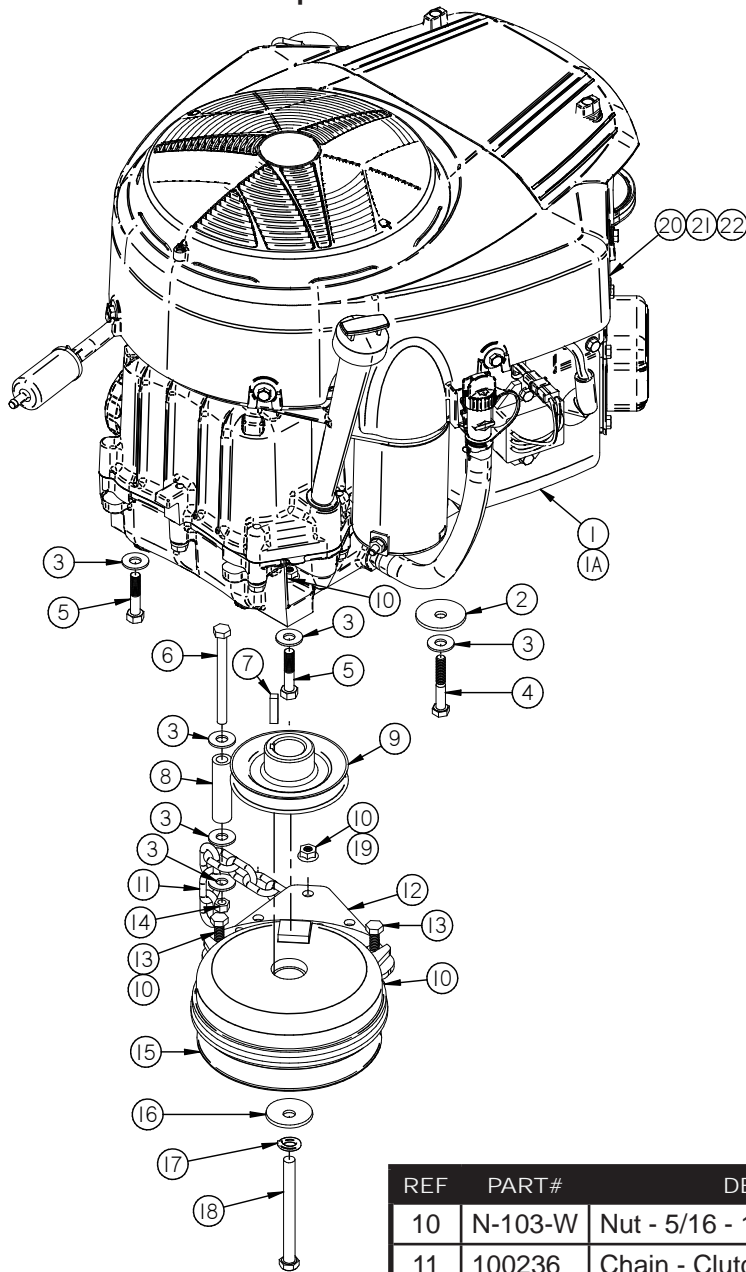


REF	PART#	DESCRIPTION	Qty
1	600377	Engine - Briggs 27Hp 725cc	1
2	W-107	Washer - 3/8 ID x 1 5/8 Belleville	1
3	W-113	Washer - 5/16 Flat	8
4	B-156	Bolt - 5/16-18 X 2 HHCS Gr.5 Bolt	1
5	B-171	Bolt - 5/16-18 x 1 1/2 HHCS Bolt	3
6	B-175	Bolt - 5/16-18 x3 1/2 HHCS Bolt	1
7	K-103	Key - 1/4 x 1 Square Key	1
8	100235	Bushing - Clutch Magnum	1
9	300474	Pulley - Drive 3.844"x1" A Section	1
10	N-103-W	Nut - 5/16 - 18 Whiz	7

REF	PART#	DESCRIPTION	Qty
11	100236	Chain - Clutch Magnum, 8 link	1
12	100234	Bracket - Clutch Magnum	1
13	B-107	Bolt - 5/16-18 X 3/4 HHCS Bolt	2
14	N-131	Nut - 5/16 - 18 Nyloc	1
15	500067	Clutch - Electric 5.5"	1
16	W-144	Washer - 7/16 SS Bellville	1
17	W-108	Washer - 7/16 Lock	1
18	B-216	Bolt - 7/16-20X3 HHCS Bolt	1
19	B-131	Bolt - 5/16-18 X 1 HHCS Gr.5 Bolt	1
20	600313	Muffler - Briggs	1
21	600316	Tailpipe - Muffler Strght	1

DIXIE CHOPPER™

23 & 26 Hp BRIGGS ENGINE



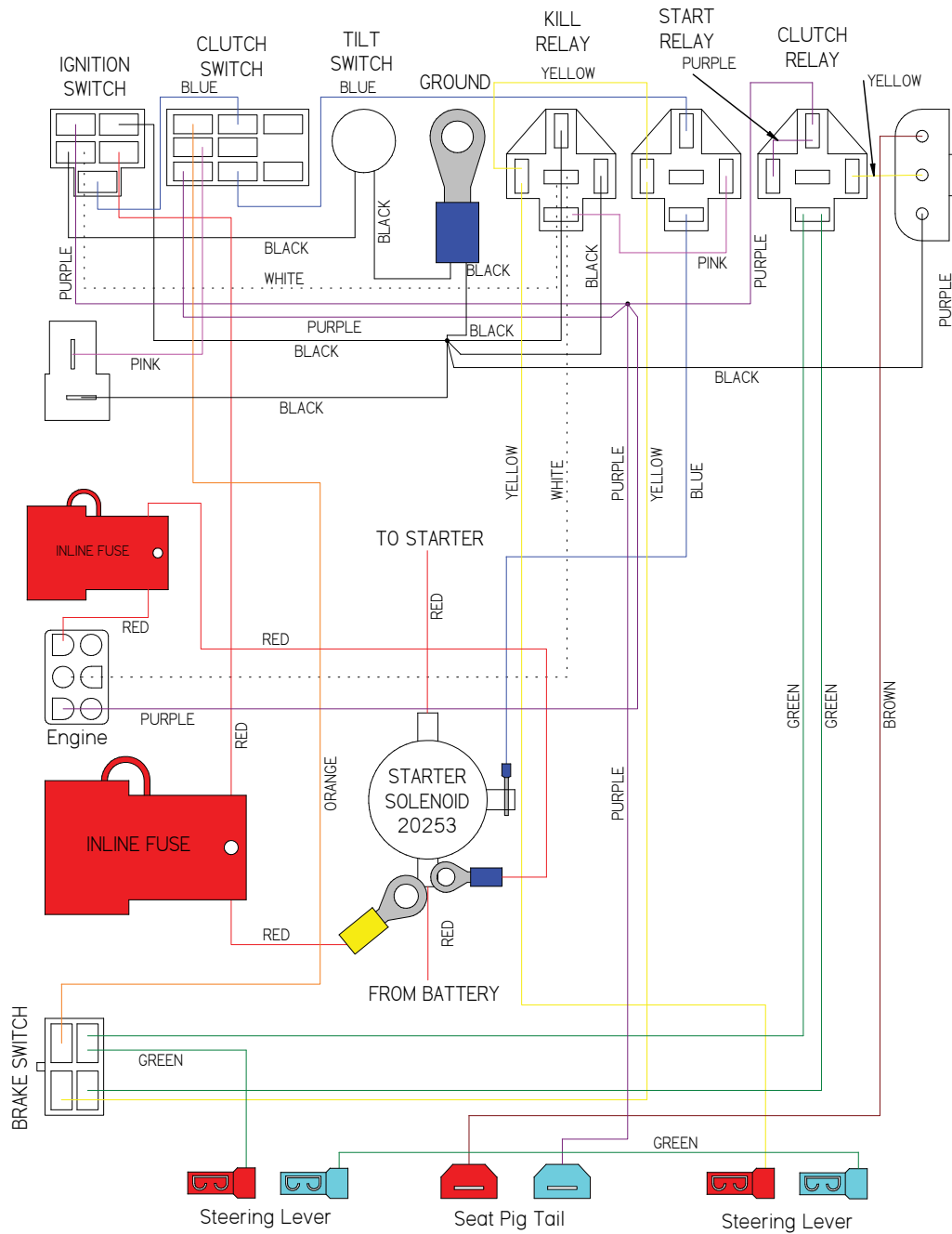
REF	PART#	DESCRIPTION	Qty
1	600366	Engine - Briggs 23Hp 724CC	1
1A	600364	Engine - Briggs 26Hp 724CC	1
2	W-107	Washer - 3/8 ID x 1 5/8 Belleville	1
3	W-113	Washer - 5/16 Flat	8
4	B-156	Bolt - 5/16-18 X 2 HHCS Gr.5 Bolt	1
5	B-171	Bolt - 5/16-18 x 1 1/2 HHCS Bolt	3
6	B-175	Bolt - 5/16-18 x3 1/2 HHCS Bolt	1
7	K-103	Key - 1/4 x 1 Square Key	1
8	100235	Bushing - Clutch Magnum	1
9	300474	Pulley - Drive 3.844"x1" A Section	1

REF	PART#	DESCRIPTION	Qty
10	N-103-W	Nut - 5/16 - 18 Whiz	7
11	100236	Chain - Clutch Magnum, 8 link	1
12	100234	Bracket - Clutch Magnum	1
13	B-107	Bolt - 5/16-18 X 3/4 HHCS Bolt	2
14	N-131	Nut - 5/16 - 18 Nyloc	1
15	500067	Clutch - Electric 5.5"	1
16	W-144	Washer - 7/16 SS Bellville	1
17	W-108	Washer - 7/16 Lock	1
18	B-216	Bolt - 7/16-20X3 HHCS Bolt	1
19	B-131	Bolt - 5/16-18 X 1 HHCS Gr.5 Bolt	1
20	600313	Muffler - Briggs	1
21	600316	Tailpipe - Muffler Strght	1
22	S-128	Screw - 10-16x3/4" Self Taping	2

DIXIE CHOPPER™

MAGNUM WIRING HARNESS

PART# 500086



PART#	DESCRIPTION	Qty
500069	Cable - Battery Red 8"	1
500086	Harness - Wiring Briggs Magnum	1
500067	Clutch - Electric 5.5" 5218-116A	1
500037	METER - HOUR / TACH	1
500021	Cable - Negative Black Battery	1
500020	Cable - Positive Red Battery	1

PART#	DESCRIPTION	Qty
500019	Switch - Electric Brake/Seat	3
500088	Module - Weather Proof Delay	1
500062	Pigtail - Wiring Clutch	1
65510	Relay - Kill/Start/Clutch	3
20225-B	Boot - Battery Positive	1
20226-B	Cable - Battery 12"	1

DIXIE CHOPPER™

General Bolt Torque Specifications

STANDARD DRY TORQUE IN FOOT-POUNDS

Bolt Size Inches	Coarse Thread /Inches	SAE 0-1-2 Low Carbon Steel	SAE Grd. 3 Medium Carbon Steel	SAE Grd. 5 Med. Carbon Heat T. Steel	SAE Grd. 6 Med. Carbon Treat. Steel	SAE Grd. 7 Med. Carbon Alloy Steel	SAE Grd. 8 Med. Carbon Alloy Steel
1/4	20	6	9	10	12.5	13	14
5/16	18	12	17	19	24	25	29
3/8	16	20	30	33	43	44	47
7/16	14	32	47	54	69	71	78
1/2	13	47	69	78	106	110	119
9/16	12	69	103	114	150	154	169
5/8	11	96	145	154	209	215	230
3/4	10	155	234	257	350	360	380
7/8	9	206	372	382	550	570	600
1	8	310	551	587	825	700	840
1-1/8	7	480	794	872	1304	1325	1430
1-1/8	7	675	1105	1211	1815	1825	1975

To determine the torque for a fine thread bolt, increase the above coarse thread ratings by 9%.

DIXIE CHOPPERTM

NOTES

DIXIE CHOPPERTM

REVISION HISTORY

8/24/10 - FRAME CHANGES PER ECO 10122
8/31/10-FLOOR MAT CHANGE PER ECO 10075
3/15/11-REPLACED DECAL 30590 WITH 800295 PER ECO 10170
3/23/11-REPLACED (4)B-173 WITH (4)B-176 FOR TRANSAXLE MOUNTING PER ECO 10203
3/23/11-ADDED NEW EPA FUEL TANKS AND EXPANSION TANKS PER ECO 10206
3/23/11-CHANGED FUEL LINE FROM 5/16" TO 1/4" PER ECO 10161
3/23/11-ADDED MOUNTING HARDWARE FOR EXPANSION TANK PER ECO'S 10207 & 10209
3/29/11-ADDED FASTENER KIT FOR ROLL BAR ASSEMBLY PER ECO 10216
3/29/11-UPDATED BELTS PER ECO 10218
4/1/11-UPDATED FENDERS AND COMPONENTS ON MAGNUM PER ECO 10208



DIXIE CHOPPERTM

The World's Fastest Lawn Mower

6302 E. County Road 100 North

Coatesville, IN. 46121

Phone 1-765-CHOPPER

www.dixiechopper.com

Dixie Chopper, Magic Circle, and the Magic Circle Atom Logo are all trademarks of Magic Circle Corporation and may not be reproduced without permission.

Printed In USA

Specifications and instructions subject to change without notice.

Print Date 06/09