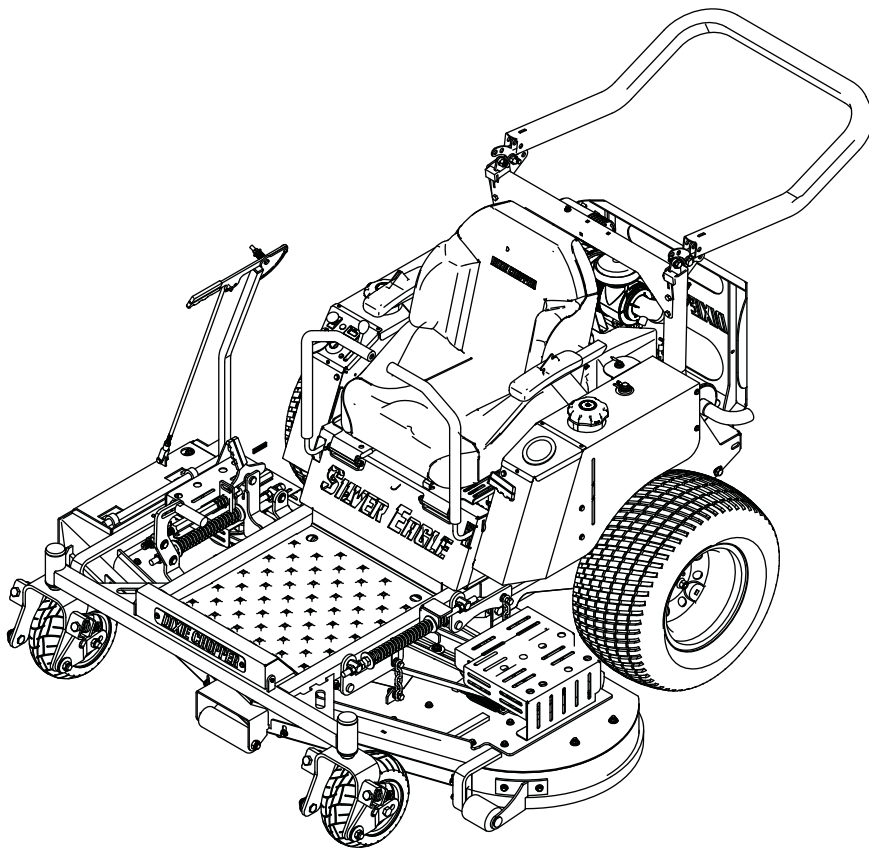




2016 Silver Eagle Parts Manual



About This Manual

Congratulations on the purchase of your new Dixie Chopper mower! When operated and maintained as directed, Dixie Chopper is confident that this mower will provide you with years of excellent performance, durability, and trouble free service.

Should you ever have any questions regarding the operation, maintenance, or safety of your mower, please contact your authorized Dixie Chopper dealer who has been specially trained in the operation and service of Dixie Chopper mowers.

Please take time to record the information about your new Dixie Chopper mower in the space below for future reference. Such information may be needed when you contact your authorized Dixie Chopper dealer with questions.

Your Dixie Chopper dealer is the best source for genuine parts and accessories to keep your mower running and cutting its best. The replacement parts found within this manual are available through all authorized dealers.

Illustrations and photographs used in this manual were current as of date of print. Despite this effort, production changes may have occurred after the time of the purchase of your Dixie Chopper; therefore, your unit may vary slightly from what is depicted in this manual.

All information, illustrations, and specifications contained in this manual were in effect at the time of publication. Dixie Chopper reserves the right to change, modify, and/or discontinue specifications and/or design without notice. If there is a change that has been made to your mower which is not shown or reflected in this manual, please see your authorized Dixie Chopper dealer before operating and/or servicing equipment.

Authorized Dealer:

Model #: _____ Engine Model #: _____

Serial #: _____ Engine Serial #: _____

Date purchased: _____

Table of Contents

<i>Topic</i>	<i>Page#</i>
Quick Reference Parts	1-2
Decals.....	3-4
Frame	5-6
Rolling Chassis.....	7-8
Engine to Deck Idler	9-10
Deck Lift.....	11-12
50" Deck Assembly.....	13-14
60" Deck Assembly.....	15-15
72" Deck Assembly.....	17-18
Deck Spindles.....	19-20
OCCDC	21-22
Pump Drive.....	23-24
Hydraulic System.....	25-26
Kawasaki Engine	27-28
Kohler Engine	29-30
Brake Components.....	31-32
Steering Components.....	33-34
Inner Fender.....	35-36
Outer Fenders and Controls	37-38
Body	39-40
Fuel System - 49 State	41
Fuel System -CA Models.....	42
Wiring Diagram (Main).....	43
Engine Adapter Harnesses.....	44
Electrical Schematic (Kawasaki)	45
Electrical Schematic (Kohler)	46
General Bolt Torque Specifications	47

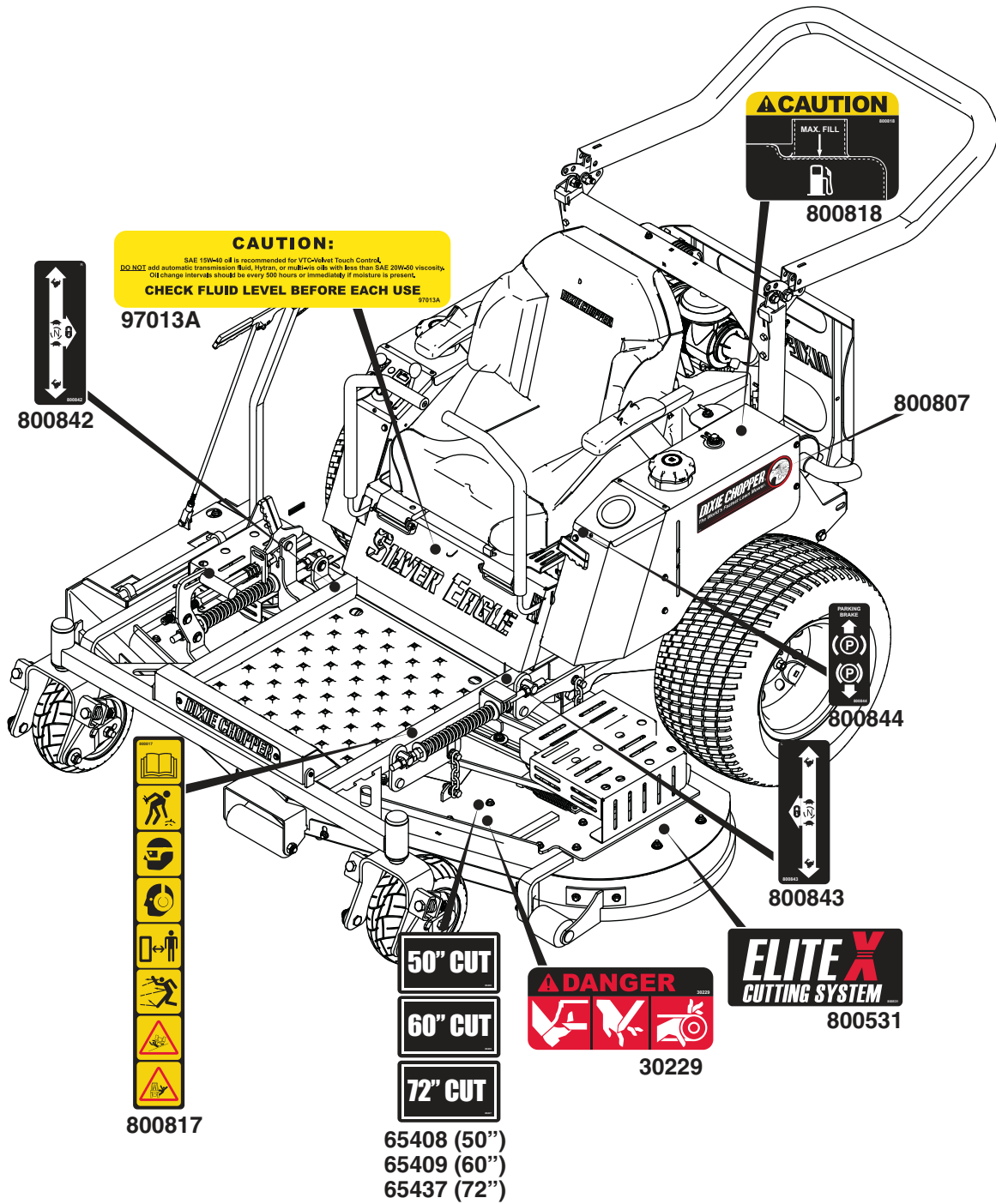
Quick Reference Parts

Silver Eagle with 25HP and 27HP Kawasaki Engine	2550KW	2760KW	2772KW
Spark Plug	902453		
Air Filter Primary	902497		
Air Filter Secondary	902498		
Fuel Filter	902657		
Oil Filter	902494		
Engine Oil	902873		
Drive System Oil	902873		
Drive System Filter	68140 (2 Required)		
Drive System Belt	2006B64R		
LH Pump	200923		
RH Pump	200924		
LH Wheel Motor	200295		
RH Wheel Motor	200296		
Blade Standard X (Factory Equipped)	30227-50X	30227-60X	30227-72X
Blade Twist	30227-50T	30227-60T	30227-72T
Spindle Drive Belt	2006B112R	2006B130R	2006B160R
Engine to Deck Belt	2010B81W	2010B85W	2010B92W
3-3/4" Anti-Scalp Roller	67240		
7-1/2" Anti-Scalp Roller	30240-0		
O.C.D.C. Complete	68122-50	300500	72122
Complete Spindle Assembly	300441		
Seat	401962		
Fuel Cap	400885		
Throttle Cable Assembly	401590		
Choke Cable Assembly	600072		
Front Tire Assembly	Tire - DUP-400338 Rim - 400956 Bearing Kit - 900340 Assembly DUP-400438		
Rear Tire Assembly	Tire - 400339 Rim - 400373 Assembly 400285		

Quick Reference Parts

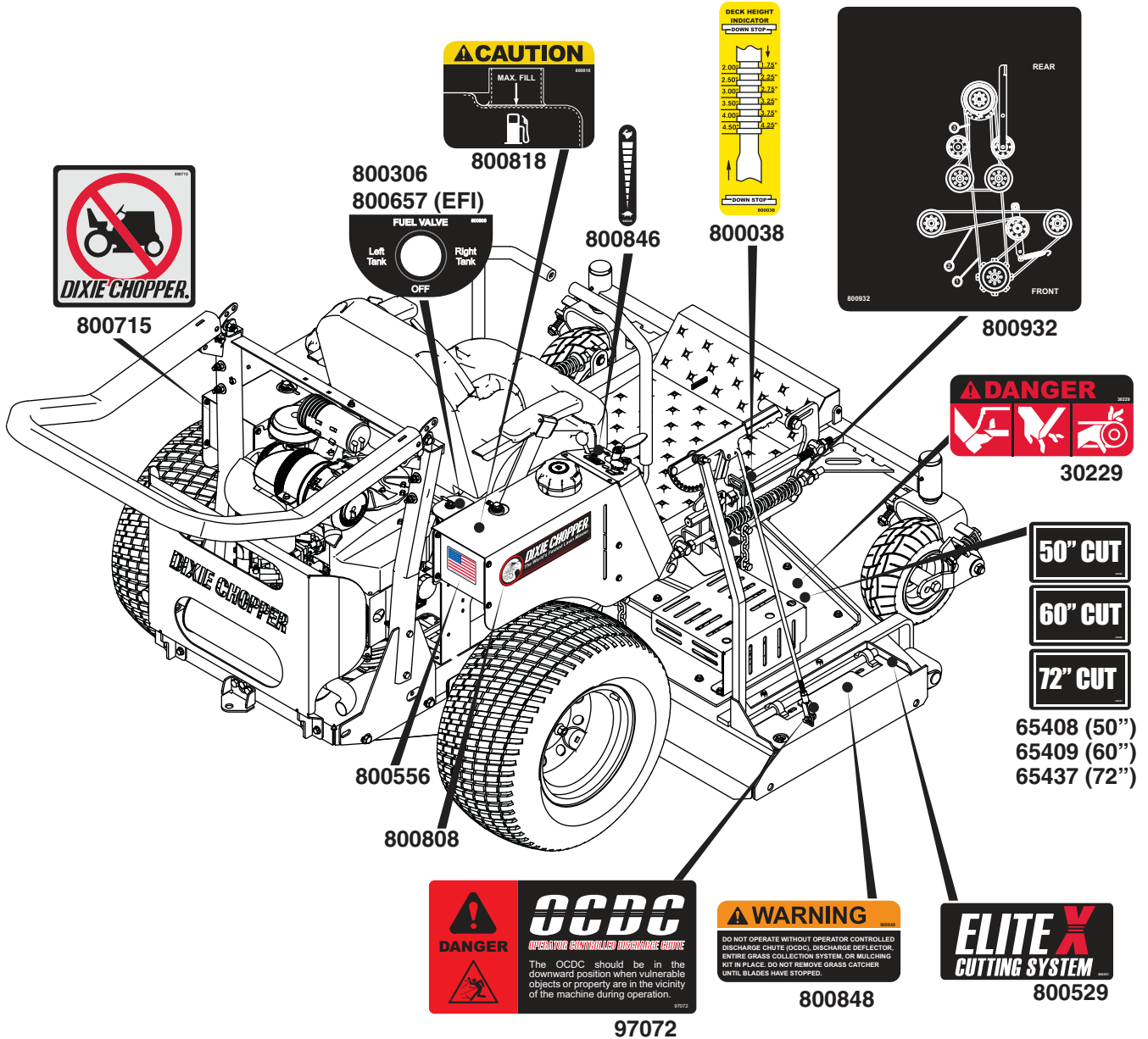
Silver Eagle with 27HP Kohler EFI Engine	2750EFI	2750EFI-CA	2760EFI	2760EFI-CA	2772EFI	2772EFI-CA
Spark Plug	902951					
Pre-Filter (Air)	901392					
Air Filter Primary	901395					
Fuel Filter	901246					
Oil Filter	901513					
Engine Oil	902873					
Drive System Oil	902873					
Drive System Filter	68140 (2 Required)					
Drive System Belt	2006B64R					
LH Pump	200923					
RH Pump	200924					
LH Wheel Motor	200295					
RH Wheel Motor	200296					
Blade Standard X (Factory Equipped)	30227-50X		30227-60X		30227-72X	
Blade Twist	30227-50T		30227-60T		30227-72T	
Spindle Drive Belt	2006B112R		2006B130R		2006B160R	
Engine to Deck Belt	2010B81W		2010B85W		2010B92W	
3-3/4" Anti-Scalp Roller	67240					
7-1/2" Anti-Scalp Roller	30240-0					
O.C.D.C.	68122-50		300500		72122	
Complete Spindle Assembly	300441					
Seat	401962					
Fuel Cap	400885					
Charcoal Canister	N/A	4221120	N/A	4221120	N/A	4221120
Throttle Cable Assembly	401590					
Choke Cable Assembly	N/A					
Front Tire Assembly	Tire - DUP-400338 Rim - 400956 Bearing Kit - 900340 Assembly DUP-400438					
Rear Tire Assembly	Tire - 400339 Rim - 400373 Assembly DUP-400285					

Decals

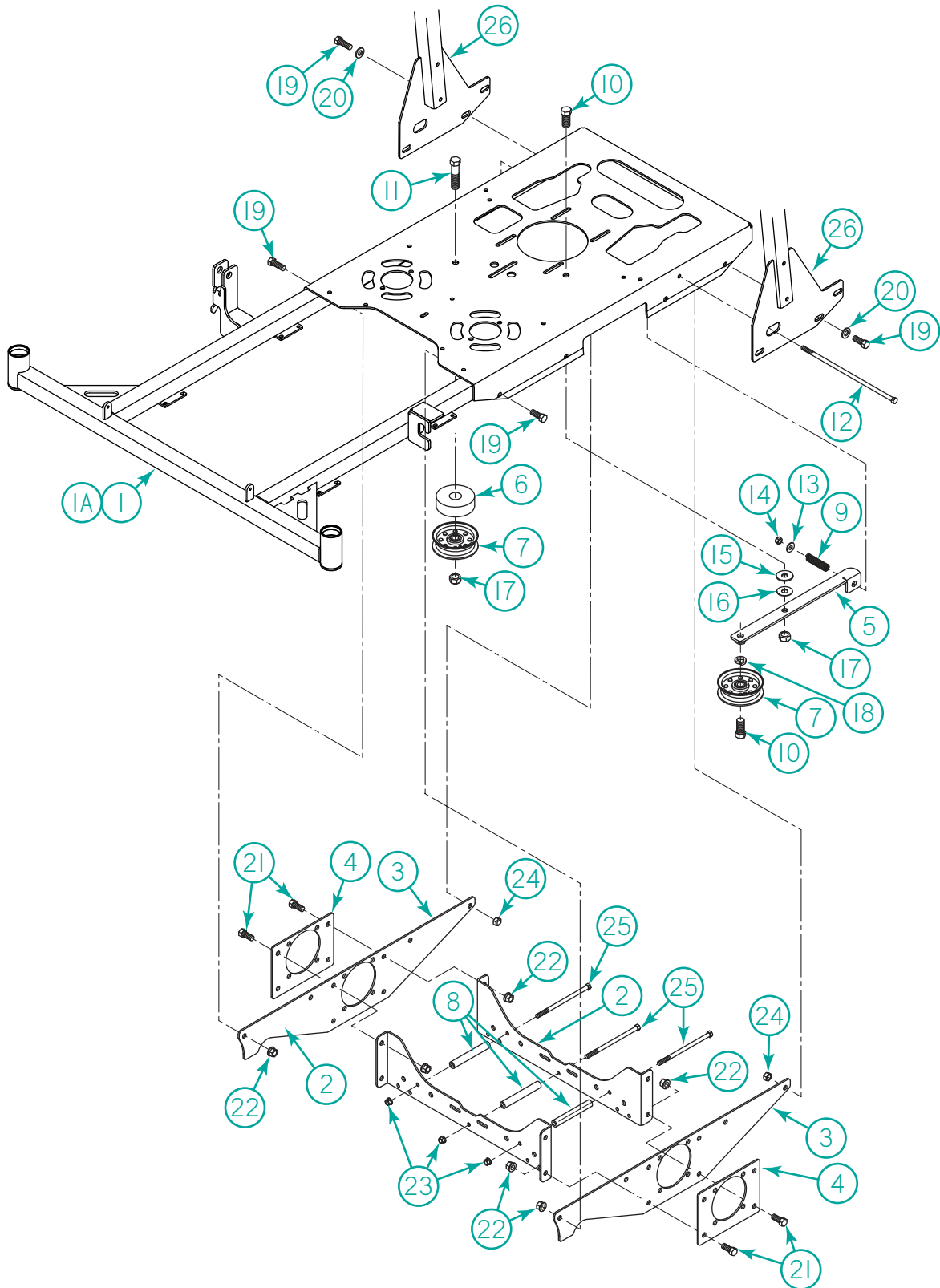


Part No.	Description
800913	Decal Kit
65408	Decal, 50" Cut
65409	Decal, 60" Cut
65437	Decal, 72" Cut

Decals



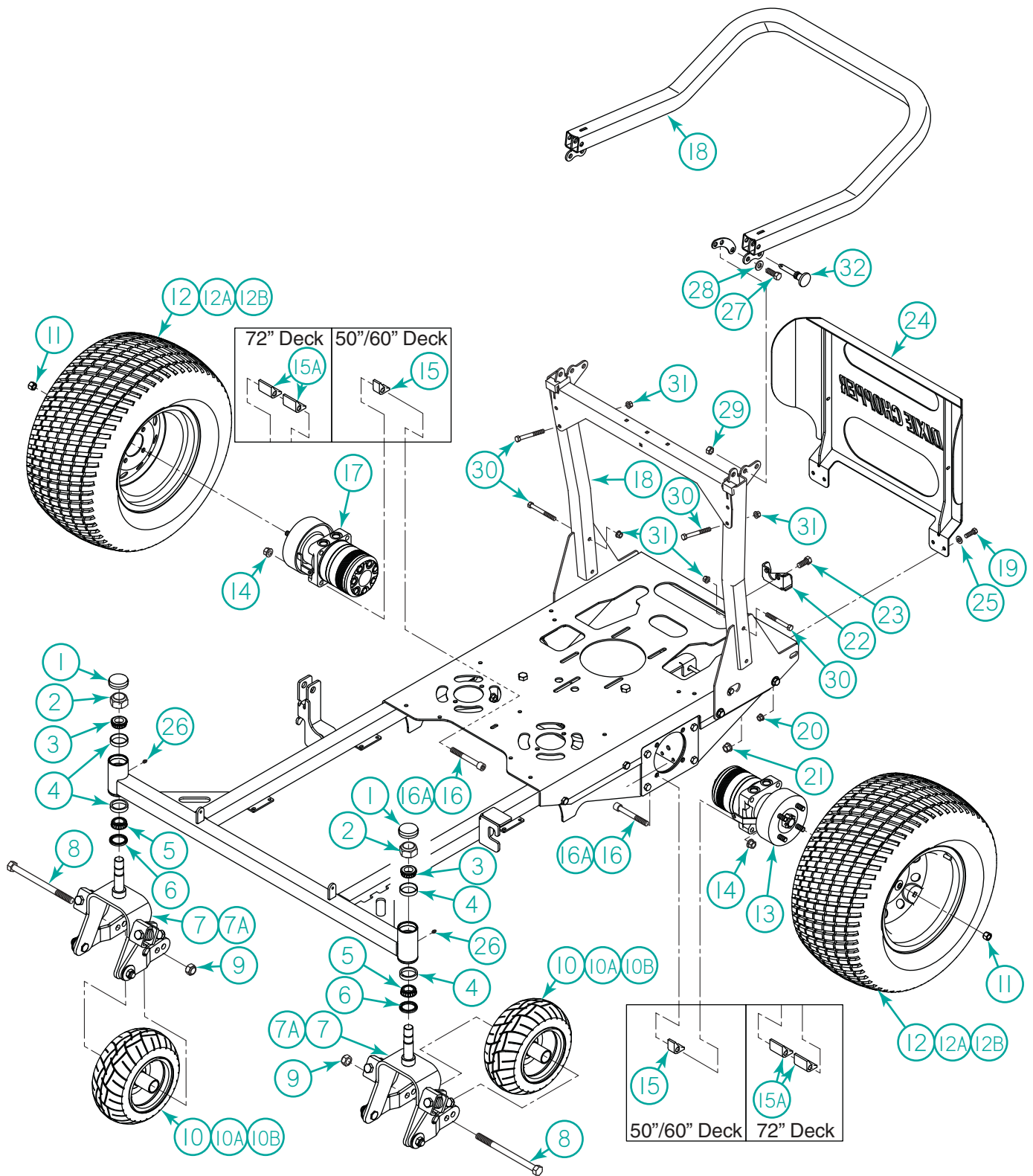
Frame



Frame

Item	Part No.	Description	Qty.
1	100999	Weldment - Frame 50/60	1
1A	100976	Weldment, Frame 72	1
2	100493	Bracket-Cross Member Lower 50/60	2
3	DUP-100036	Plate - Wheel Motor Inside	2
4	DUP-100035	Plate - Wheel Motor Outside	2
5	200032	Arm - Idler	1
6	600095	Spacer - 5/8 id x 2.0" OD Idler Engine	1
7	30224	Pulley - Flat Idler 4.75 in	2
8	DUP-100038	Sleeve - Cross Member Bottom	3
9	68280	Spring - Twin 20LB (COM.)	1
10	B-264	Bolt - 5/8-11X1-1/2 HHCS FT	2
11	B-181	Bolt - 5/8-11X2-1/2 HHCS PT Gr.5	1
12	B-270	Bolt - 3/8-16X11 HHCS PT Gr.2 Zinc	1
13	W-104	Washer - 3/8 Flat	1
14	N-107	Nut - 3/8-16 Nyloc	1
15	W-135	Washer - 5/8 Flat	1
16	W-140	Washer - 5/8ID x 1-5/8OD Nylon	1
17	N-115	Nut - 5/8 - 11 Nyloc	2
18	W-111	Washer - 5/8 Lock	1
19	B-117	Bolt - 1/2-13 x 1-1/4" HHCS	8
20	W-197	Washer - 1/2 Flat SAE Zinc	4
21	B-138	Bolt - 1/2-13X1 HHCS FT Gr.5 Zinc	8
22	N-157	1/2 - 13 Whiz Flange Nut	12
23	N-108	Nut - 3/8"-16 Whiz	3
24	N-146	Nut - 1/2 - 13 Stover Lock	4
25	B-271	Bolt - 3/8-16X6 HHCS PT Gr.5 Zinc	3
26	900391	Assembly, Roll Bar	1
27			

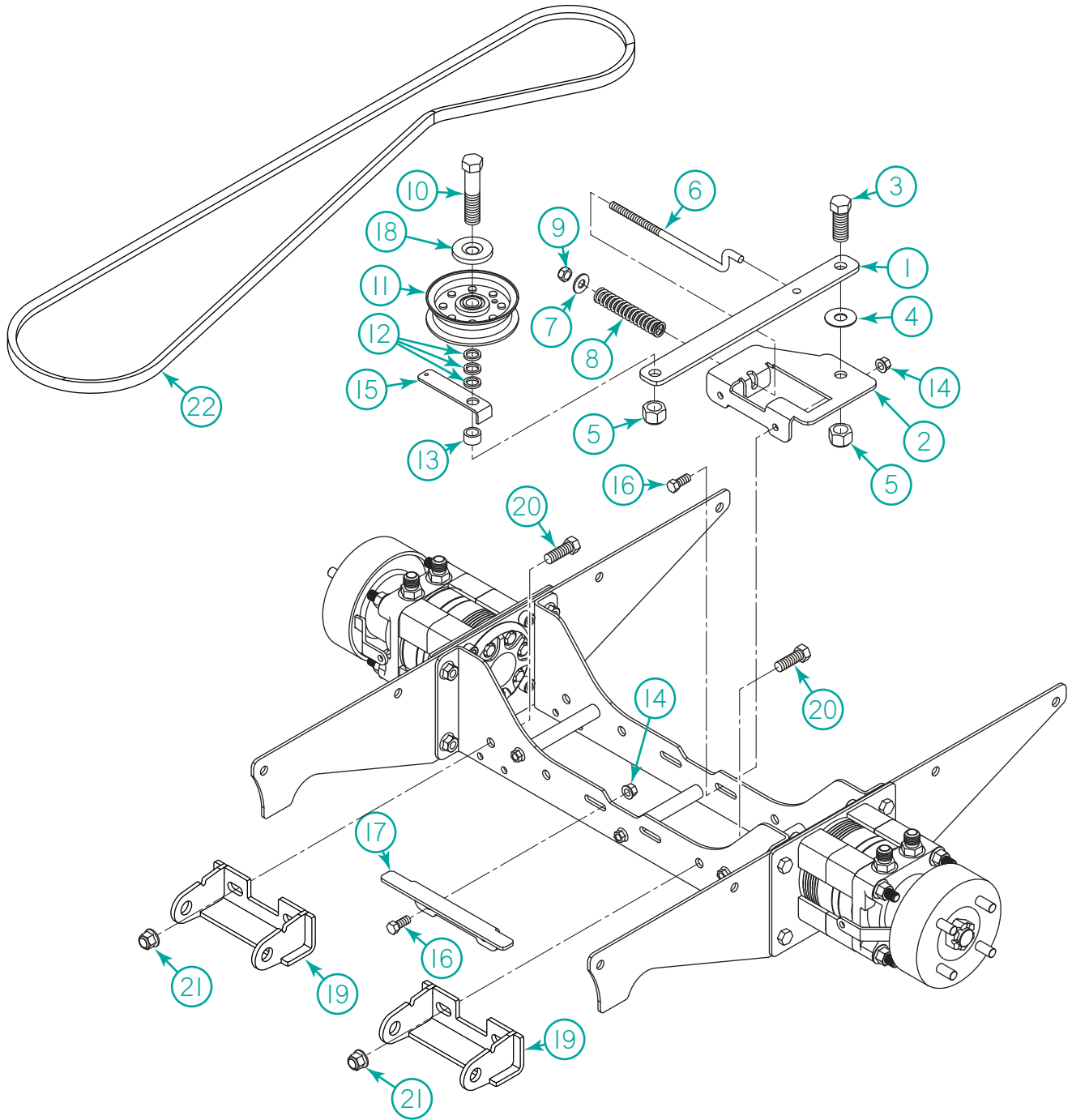
Rolling Chassis



Rolling Chassis

Item	Part No.	Description	Qty.
1	401410	Cap - Dust Fork Front	2
2	N-183	NUT - 1 - 14 NYLOC JAM	2
3	10207	Bearing - Upper Front Fork	2
4	10206	Bearing - Race Front Fork	4
5	97171	Bearing - Bottom Fork 1.0625" L44649	2
6	10208	Seal - Fork Front CR14840	2
7	100200	Assembly-FF Springer Cantilever Small	2
7	302147	Fork Front Standard	2
8	B-122	Bolt - 5/8-11X7-1/2 HHCS PT Gr.5 Zinc	2
9	N-156	Nut - 5/8 - 11 Nyloc Jam	2
10	DUP-400438	Assembly - Wheel Front Small 4-Bearing 2	2
10	DUP-400338	Tire - 13/6.5-6 MC Tread (Tire Only)	2
10	400956	Kit - Conversion Bearing Wheel	2
11	N-113	Nut - 1/2 - 20 Wheel Lug	8
12	DUP-400285	Assembly - Tire/Rim 24x12.00-12NHS	2
12	400339	Tire - 24 x 12-12 Turf Tech (Tire Only)	2
12	400373	Rim - Rear 12" x 8.5"	2
13	200295	Wheel Motor - Left	1
14	N-223	Nut - 1/2"-13 Flange Top Lock Gr. G	8
15	200759	Spacer, Wheel Motor .51o ID x 1" Long	8
15	200967	Spacer, Wheel Motor .51o ID x 1" Long	16
16	B-344	Bolt - 1/2-13 x 3-1/2" SHCS Gr.8	8
16	B-427	Bolt - 1/2-13 x 7-1/2" SHCS Gr.8	8
17	200296	Wheel Motor - Right SE	1
18	900391	Assembly-Bar Roll	1
19	N-108	Nut - 3/8"-16 Whiz	4
20	B-108	Bolt - 3/8-16X1 HHCS FT Gr.5 Zinc	4
21	N-157	Nut - 1/2"-13 Whiz	2
22	100043	Hitch - Rear	1
23	B-138	Bolt - 1/2-13X1 HHCS FT Gr.5 Zinc	2
24	401969	Weldment-Bracket Guard Engine	1
25	W-160	Washer - M10 Flat	4
26	F-100	3/16 Drive in Grease Fitting	2
27	B-117	Bolt - 1/2-13X1-1/4 HHCS FT Gr.5	2
28	W-197	Washer - 1/2 Flat SAE Zinc	2
29	N-146	Nut - 1/2 - 13 Stover Lock	2
30	B-140	Bolt - 3/8-16X3 HHCS PT Gr.5	8
31	N-206	Nut - 3/8-16 Reg Flange Top	8
32	900410	Pin Assy - Full Vision Rollbar	2
33	902147	Channel - for .120 thick tube FV ROPS	2

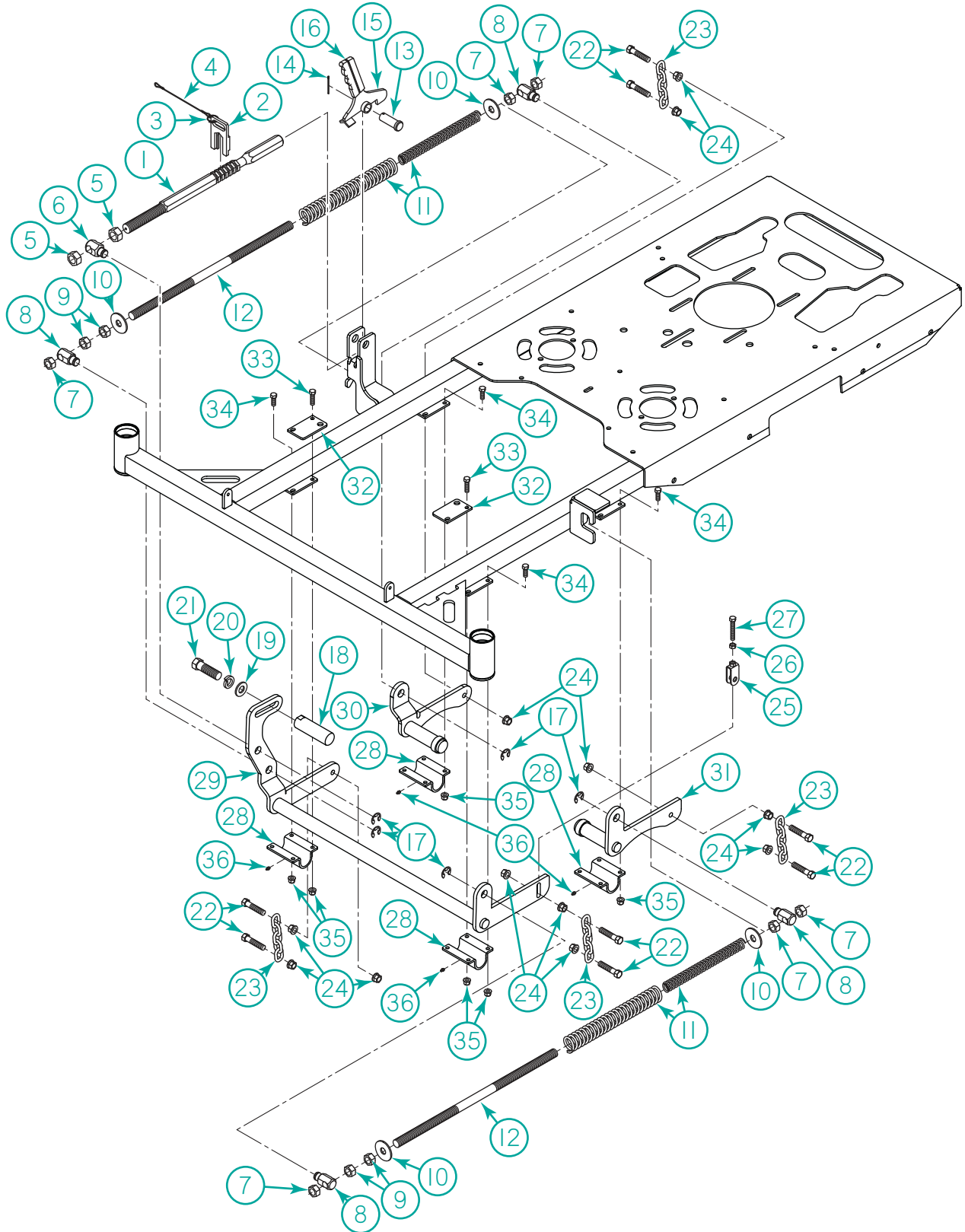
Engine to Deck Idler



Engine to Deck Idler

Item	Part No.	Description	Qty.
1	100171	Arm - Idler	1
2	100169	Bracket - Mounting Idler Arm	1
3	B-264	Bolt - 5/8-11X1-1/2 HHCS FT	1
4	W-140	Washer - 5/8ID x 1-5/8OD Nylon	1
5	N-115	Nut - 5/8 - 11 Nyloc	2
6	300184	Rod - Deck Idler Tension	1
7	W-104	Washer - 3/8 Flat	1
8	97390	Spring - Diesel Engaging 40LB	1
9	N-107	Nut - 3/8"-16 Nyloc	1
10	B-297	Bolt - 5/8-11X2-3/4 HHCS PT Gr.5	1
11	30224	Pulley - Flat Idler 4.75 in	1
12	30112	SPACER - 1/8" X 5/8" X 7/8"	3
13	65278	Bushing - Brake Spacer 1/2 long	1
14	N-108	Nut - 3/8"-16 Whiz	4
15	100174	Guide - Belt Idler Pulley	1
16	B-137	Bolt - 3/8-16X3/4 HHCS FT Gr.5 Zinc	4
17	100170	Bracket - Rest Idler Arm	1
18	902970	Dust Shield, .655 ID 2.000 OD	1
19	401906	Weld, Rear Stabilizer Mount Black	2
20	B-117	Bolt - 1/2-13 x 1-1/4" HHCS Gr. 5	4
21	N-218	Nut, 1/2-13 Flange Nylon Insert	4
22	2010B81W	Belt, Engine To Deck (50" Deck)	1
22A	2010B85W	Belt, Engine To Deck (60" Deck)	1
22B	2010B92W	Belt, Engine To Deck (72" Deck)	1

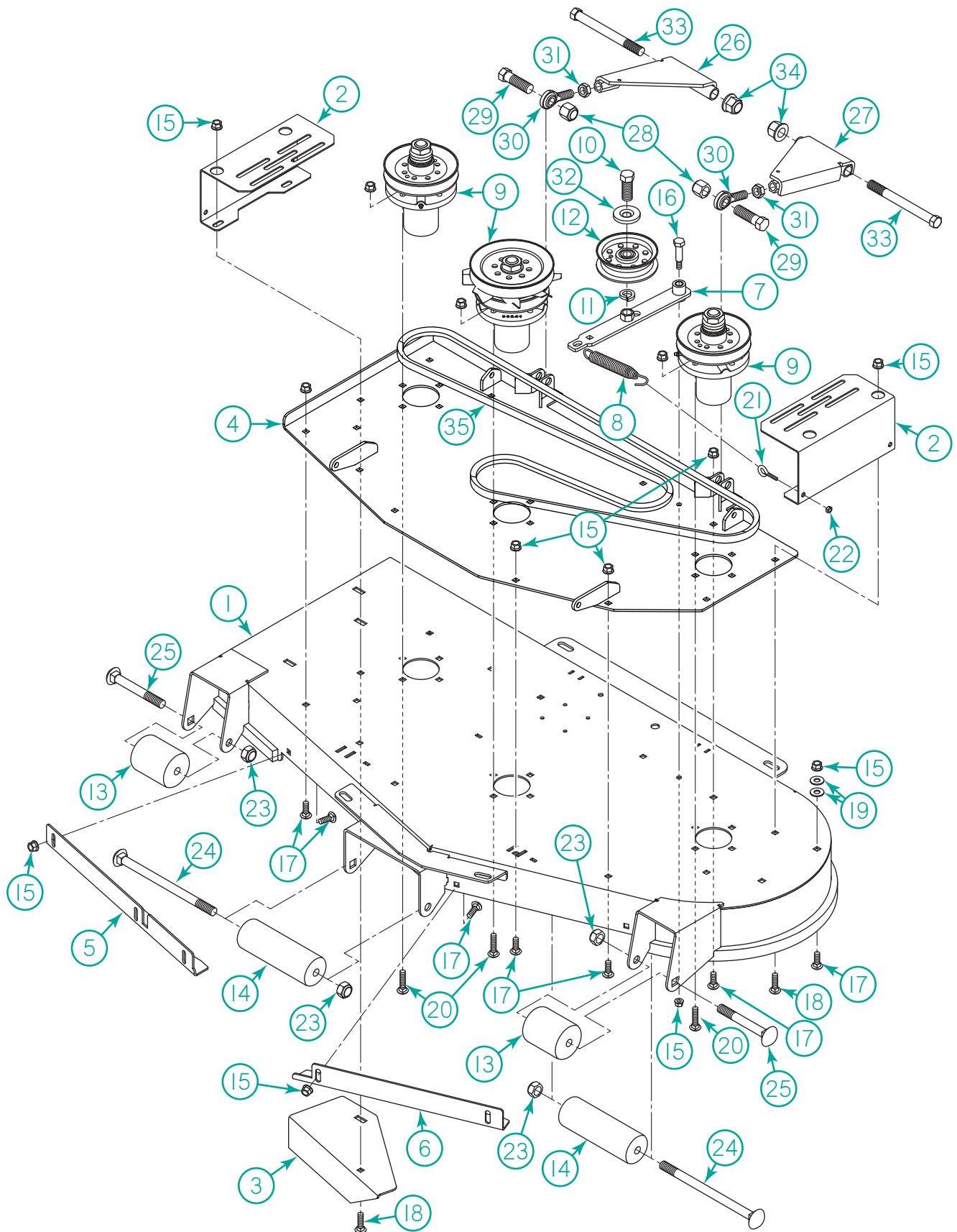
Deck Lift



Deck Lift

Item	Part No.	Description	Qty.
1	300030	Adjuster - Deck Height	1
2	300035	Stop - Lift Stop	1
3	C-104	Clip - Kick-out Cotter Ring Clip	1
4	300042	Cable - Deck Lock	1
5	N-136	Nut - 3/4 - 16 HHCS	2
6	300031	Trunnion - 3/4-10 x 1-1/8" Hex	1
7	N-120	Nut - 5/8 - 11 HHCS	6
8	300028	Trunnion - 5/8-11 x 1" HEX	4
9	N-147	Nut - 5/8 - 11 Jam	4
10	W-177	Washer - 5/8ID x 2OD Flat	4
11	300043	Assembly - Spring - deck lift KIT	2
12	300027	Rod-Threaded, Deck Lift, 20.75"	2
13	P-135	Pin - 3/4 X 2 Clevis Zinc	1
14	P-136	Pin - 1/8 X 1-1/2 Cotter Zinc	1
15	300032	Handle - Lift Deck	1
16	67258	Grip - 1/4 x 1 Black	1
17	C-116	Clip - E 3/4 ID	5
18	DUP-301736	Pedal - Foot Lift Deck	1
19	W-181	Washer - 5/8ID x 1-5/16OD x 1/8 Flat	1
20	W-111	Washer - 5/8 Lock	1
21	B-275	Bolt - 5/8-18X2 HHCS FT Gr.5 Zinc	1
22	B-286	Bolt - 7/16-14X1-3/4 HHCS PT Gr.5	8
23	300033	Chain - 0.25" X 1.00" 5-Link 140511	4
24	N-154	Nut - 7/16 - 14 Whiz	12
25	300045	Hook - Deck Chain Adjust	1
26	N-103	Nut - 5/16 - 18 HHCS	1
27	B-105	Bolt - 5/16-18X1-3/4 HHCS FT Gr.5	1
28	302171	Bracket, Deck Lift Saddle Clear Zinc	4
29	302163	Weld, Front Deck Lift Clear Zinc	1
30	302172	Weld, Rear Deck Lift RH Clear Zinc	1
31	302173	Weld, Rear Deck Lift LH Clear Zinc	1
32	402037	Plate, Floor Pan Support Clear Zinc	2
33	B-131	Bolt, 5/16-18 x 1" HHCS FT Gr. 5 Clear Zinc	4
34	B-107	Bolt, 5/16-18 x 3/4" HHCS Gr. 5 Clear Zinc	12
35	N-217	Nut, 5/16-18 Flange Nylon Insert Clear Zinc	16
36	N-109	Grease Fitting, 3/16 x .094" Shank Drive In	4

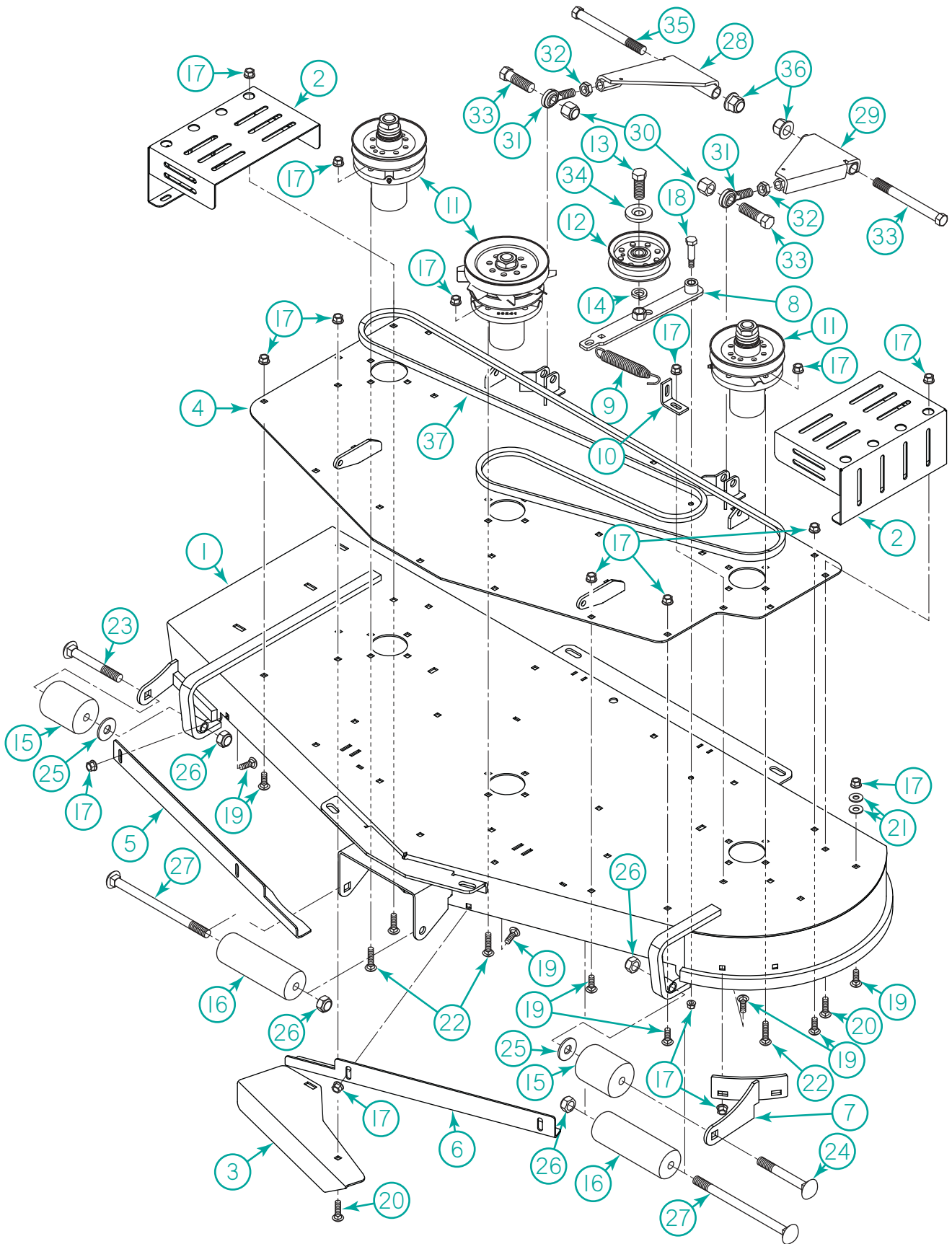
50" Deck Assembly



50" Deck Assembly

Item	Part No.	Description	Qty.
	302147	ASM, Deck Commercial 50" Complete (Incl 1~25)	1
1	DUP-300379	Weldment - Deck Standard Elite 50"	1
2	300044	Guard-Pulley, Black	2
3	300385	Baffle - Wiper Bolt On Deck Elite 50"	1
4	302148	Weldment-Top Plate 50" Orange	1
5	300386	Baffle - Bolt On RH Deck Elite 50"	1
6	300387	Baffle - Bolt On LH Deck Elite 50"	1
7	300510	Weldment - Idler Deck (Incl Item 7A)	1
7A	65276	Bushing, 1/2 x 5/8 x 1-1/4" Bronze (Not Shown)	1
8	300324	Spring, Extension Swivel Hook 18.25#	1
9	REF	Deck Spindles	3
10	B-264	Bolt - 5/8-11X1-1/2 HHCS FT Gr.5 nc	1
11	W-111	Washer - 5/8 Lock	1
12	30224	Pulley - Flat Idler	1
13	67240	Roller - 3.75"L Nylon Deck	2
14	30240-0	Roller - 7.50"L Nylon Deck	2
15	N-108	Nut - 3/8"-16 Whiz	34
16	B-118	Bolt - 1/2x13 x 2-1/4 Shoulder Bolt	1
17	B-110	Bolt - 3/8-16X3/4 CARR FT Gr.5	17
18	B-135	Bolt - 3/8-16X1 CARR FT Gr.5	4
19	W-104	Washer - 3/8 Flat	4
20	B-136	Bolt - 3/8-16X1-1/4 CARR FT Gr.5	12
21	B-296	Bolt - 1/4-20X1 Eye	1
22	N-176	Nut - 1/4 - 20 Nyloc	1
23	N-156	Nut - 5/8 - 11 Nyloc Jam	4
24	B-255	Bolt - 5/8-11X 9 CARR PT Gr.5	2
25	B-278	Bolt - 5/8-11X5 CARR PT Gr.5	2
26	300040	Stabilizer RH	1
27	300039	Stabilizer LH	1
28	N-156	Nut - 5/8 - 11 Nyloc Jam	2
29	B-185	Bolt - 5/8-11x 2 Bolt HHCS	2
30	900070	Joint - Hyme 5/8-18 x 1-3/4	2
31	N-191	Nut - 5/8 - 18 Jam	2
32	902970	Dust Shield, .655 ID 2.000 OD	1
33	B-424	Bolt, 3/4-10 x 7" PT Gr. 5	2
34	N-222	Nut, 3/4-10 Nyloc Flange	2
35	2006B112R	Belt, 50" Deck Spindle	1

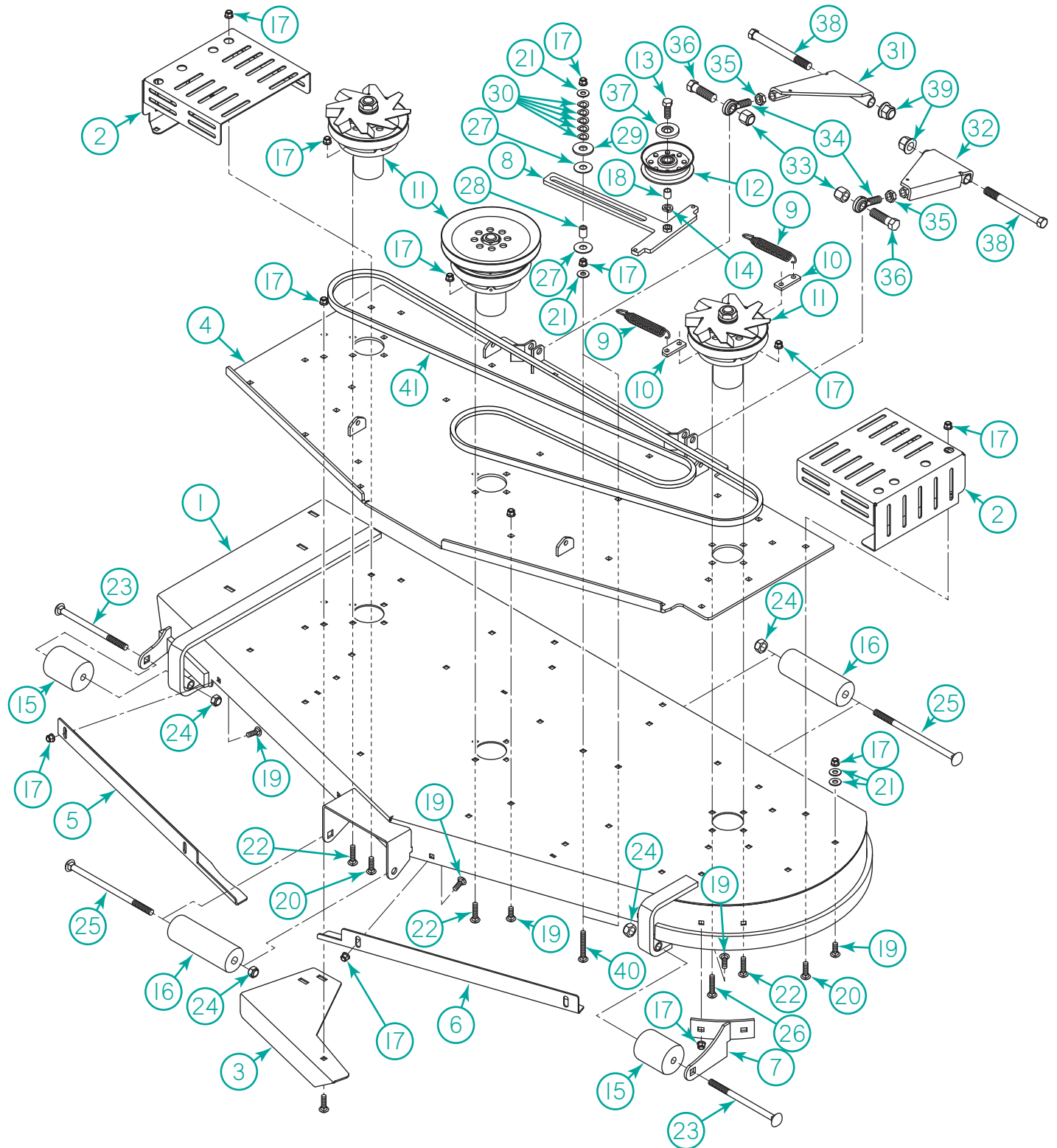
60" Deck Assembly



60" Deck Assembly

Item	Part No.	Description	Qty.
	302181	Assembly - Deck Commercial 60" (Incl 1~27)	
1	DUP-300343	Weldment - Deck Elite w/Paint 60"	1
2	301972	Guard-Pulley Deck 60"	2
3	300056	Baffle - Wiper Deck Elite 60"	1
4	302138	Weldment - Plate Top Deck 60"	1
5	300344	Baffle - Deck Bolt-On RH 60" Elite	1
6	300345	Baffle - Deck Bolt-On LH 60" Elite	1
7	300333	Bracket - Roller Left Deck	1
7A	300510	Weldment - Idler Deck (Incl Item 7A)	1
8	65276	Bushing, 1/2 x 5/8 x 1-1/4" Bronze (Not Shown)	1
9	300324	Spring, Extension Swivel Hook 18.25#	1
10	65308-L	Tab - Angle f/Idler Spring	1
11	300441	Assembly - Hub Deck Sealed Short	3
12	30224	Pulley - Flat Idler	1
13	B-264	Bolt - 5/8-11X1-1/2 HHCS FT Gr.5	1
14	W-111	Washer - 5/8 Lock	1
15	67240	Roller - 3.75"L Nylon Deck	2
16	30240-0	Roller - 7.50"L Nylon Deck	2
17	N-108	Nut - 3/8"-16 Whiz	44
18	B-118	Bolt - 1/2x13 x 2-1/4 Shoulder Bolt	1
19	B-110	Bolt - 3/8-16X3/4 CARR FT Gr.5	25
20	B-135	Bolt - 3/8-16X1 CARR FT Gr.5	6
21	W-104	Washer - 3/8 Flat	4
22	B-136	Bolt - 3/8-16X1-1/4 CARR FT Gr.5	12
23	B-254	Bolt - 5/8-11X7 CARR PT Gr.5	1
24	B-253	Bolt - 5/8-11X6 CARR PT Gr.5	1
25	W-135	Washer - 5/8 Flat	2
26	N-156	Nut - 5/8 - 11 Nyloc Jam	4
27	B-255	Bolt - 5/8-11X9 CARR PT Gr.5	2
28	300040	Stabilizer - Stabilizer RH	1
29	300039	Stabilizer - Stabilizer LH	1
30	N-156	Nut - 5/8 - 11 Nyloc Jam	2
31	900070	Joint - Hyme 5/8-18 x 1-3/4	2
32	N-191	Nut - 5/8 - 18 Jam	2
33	B-185	Bolt - 5/8-11X2 HHCS FT Gr.5	2
34	902970	Dust Shield, .655 ID 2.000 OD	1
35	B-424	Bolt, 3/4-10 x 7" PT Gr. 5	2
36	N-222	Nut, 3/4-10 Nyloc Flange	2
37	2006B130R	Belt, 60" Deck Spindle	1

72" Deck Assembly



72" Deck Assembly

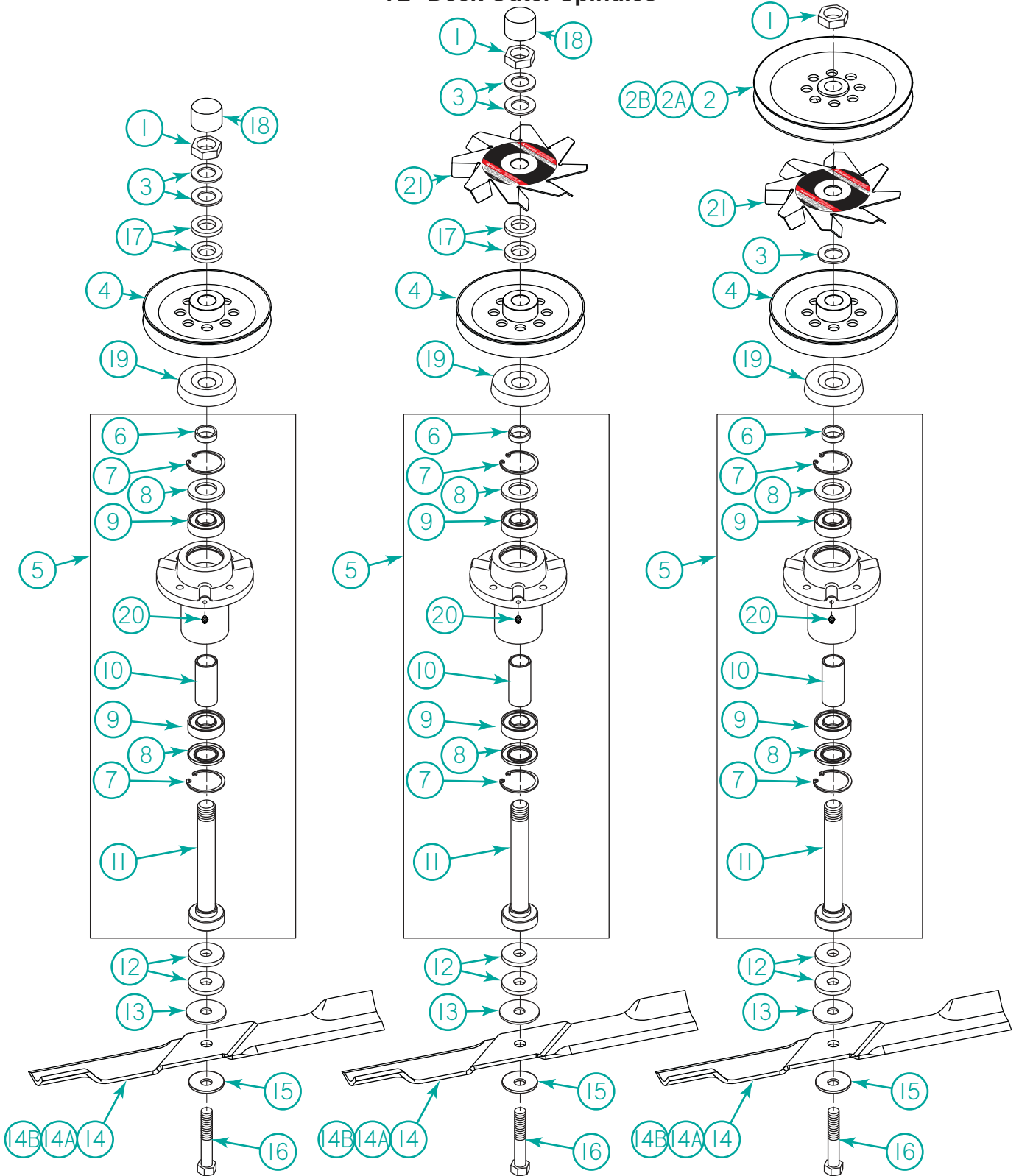
Item	Part No.	Description	Qty.
	302011	Assembly - Deck 72" (Incl 1 ~ 30)	
1	302012	Weldment - Deck Elite w/Paint 72"	1
2	300057	Guard-Pulley Deck 72"	2
3	300356	Baffle - Wiper Deck Elite 72"	1
4	302106	Weldment - Plate Top Deck 72"	1
5	300358	Baffle - Deck Bolt-On RH 72" Elite	1
6	300357	Baffle - Deck Bolt-On LH 72" Elite	1
7	300359	Bracket - Roller Left Deck	1
8	68225	Weldment - Idler Deck	1
9	300324	Spring, Extension Swivel Hook 18.25#	2
10	65308	Tab - Casting Connecting	1
11	REF	Assembly - Hub Deck Sealed Short	3
12	30224	Pulley - Flat Idler	1
13	B-117	Bolt - 1/2-13 X 1-1/4 HHCS FT Gr.5	1
14	W-112	Washer - 1/2 Lock	1
15	67240	Roller - 3.75"L Nylon Deck	2
16	30240-0	Roller - 7.50"L Nylon Deck	3
17	N-216	Nut - 3/8"-16 Flange Nyloc	53
18	300571	Bushing, Pulley, 1/2 x 5/8 x 23/32"	1
19	B-110	Bolt - 3/8-16X3/4 CARR FT Gr.5	32
20	B-135	Bolt - 3/8-16X1 CARR FT Gr.5	5
21	W-104	Washer - 3/8 Flat	8
22	B-136	Bolt - 3/8-16X1-1/4 CARR FT Gr.5	12
23	B-254	Bolt - 5/8-11X7 CARR PT Gr.5	2
24	N-156	Nut - 5/8 - 11 Nyloc Jam	5
25	B-255	Bolt - 5/8-11X9 CARR PT Gr.5	3
26	B-190	Bolt, 3/8-16 x 1-1/2" Carriage	2
27	W-140	Washer, 5/8 x 1-5/8" Nylon	4
28	97139	Bushing, 3/8 x 5/8 x 3/4"	2
29	W-135	Washer, 5/8 Flat	2
30	W-149	Washer, 5/8 Dish Spring	10
31	300040	Stabilizer - Stabilizer RH	1
32	300039	Stabilizer - Stabilizer LH	1
33	N-156	Nut - 5/8 - 11 Nyloc Jam	2
34	900070	Joint - Hyme 5/8-18 x 1-3/4	2
35	N-191	Nut - 5/8 - 18 Jam	2
36	B-185	Bolt - 5/8-11X2 HHCS FT Gr.5	2
37	902970	Dust Shield, .655 ID 2.000 OD	1
38	B-424	Bolt, 3/4-10 x 7" PT Gr. 5	2
39	N-222	Nut, 3/4-10 Nyloc Flange	2
40	B-223	Bolt, 3/8-16 x 2-1/4" HHCS GR.5 Zinc	2
41	2006B160R	Belt, 72" Deck Spindle	1

Deck Spindles

50" Deck Outer Spindles

60" Deck Outer Spindles
72" Deck Outer Spindles

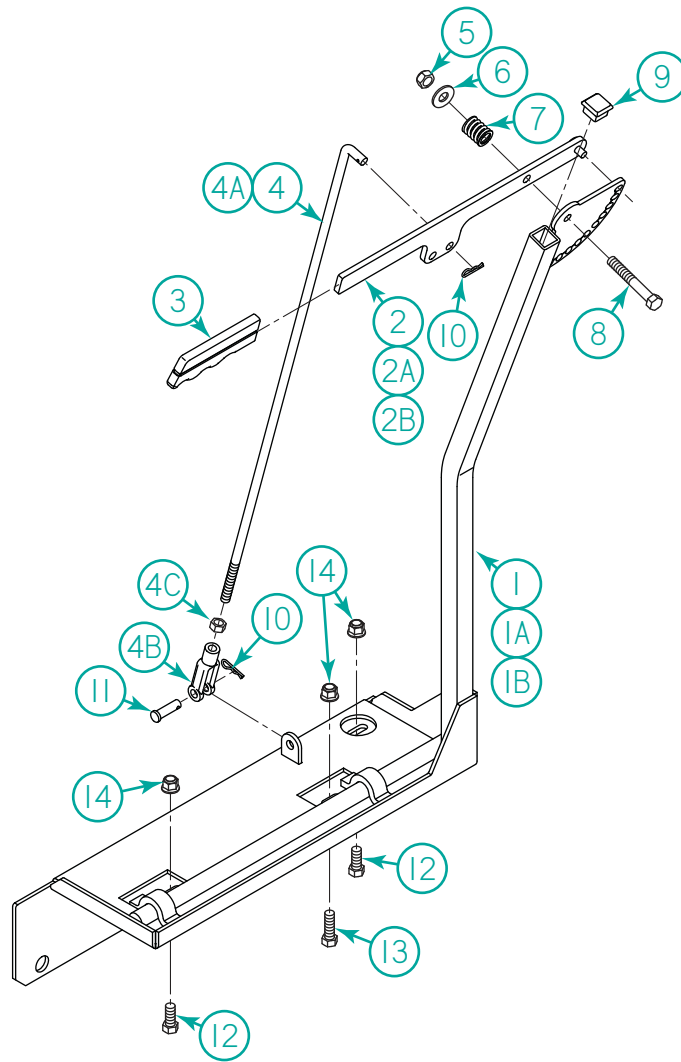
Inner Spindle



Deck Spindles

Item	Part No.	Description	Qty.
1	N-167	Nut, 1-14 Hex Jam	2
2	302553	Pulley, 9" x 1.00" Bore (72" Deck)	1
2A	300059	Pulley, 7.50 x 1.00" Bore (60" Deck)	1
2B	300037	Pulley, 6" EDB x 1.00" Bore (50" Deck)	1
3	W-137	Washer, 1" ID x 2" OD Belleville	AR
4	9907525X100S	Pulley, 5.25 x 1.00" Bore Split (50"/60" Deck)	1
4A	9907675X100S	Pulley, 6.75 x 1.00" Bore Split (72" Deck)	3
5	300441	Assembly, Hub Deck Sealed	3
6	300448	Bushing, Seal Hub Deck	3
7	788080	Ring, Retaining	6
8	300443	Seal, Oil Hub Deck	6
9	30218	Bearing, Hub	6
10	30219	Spacer, Hub Deck	3
11	30217	Shaft, Mower Short	3
12	W-182	Washer, .656 ID x 2 OD x 1/4" Blade Spacer	6
13	W-101	Washer, 5/8" ID x 2-1/4" OD Fiber	3
14	30227-72X	Blade, X Style (72" Deck)	3
14A	30227-60X	Blade, X Style (60" Deck)	3
14B	30227-50X	Blade, X Style (50" Deck)	3
15	W-100	Washer, 5/8 ID x 2" OD Belleville	3
16	B-121-L	Bolt, 5/8-18 x 3" Blade	3
17	W-146	Washer, 1" ID x 1.75" OD x .25"	4
18	67225	Cap, Polyethelyne	2
19	301372	Shield, Blade Spindle	3
20	F-102	Fitting, 1/4-28 Grease	3
21	300058	Fan (Includes 800056 Decal)	AR

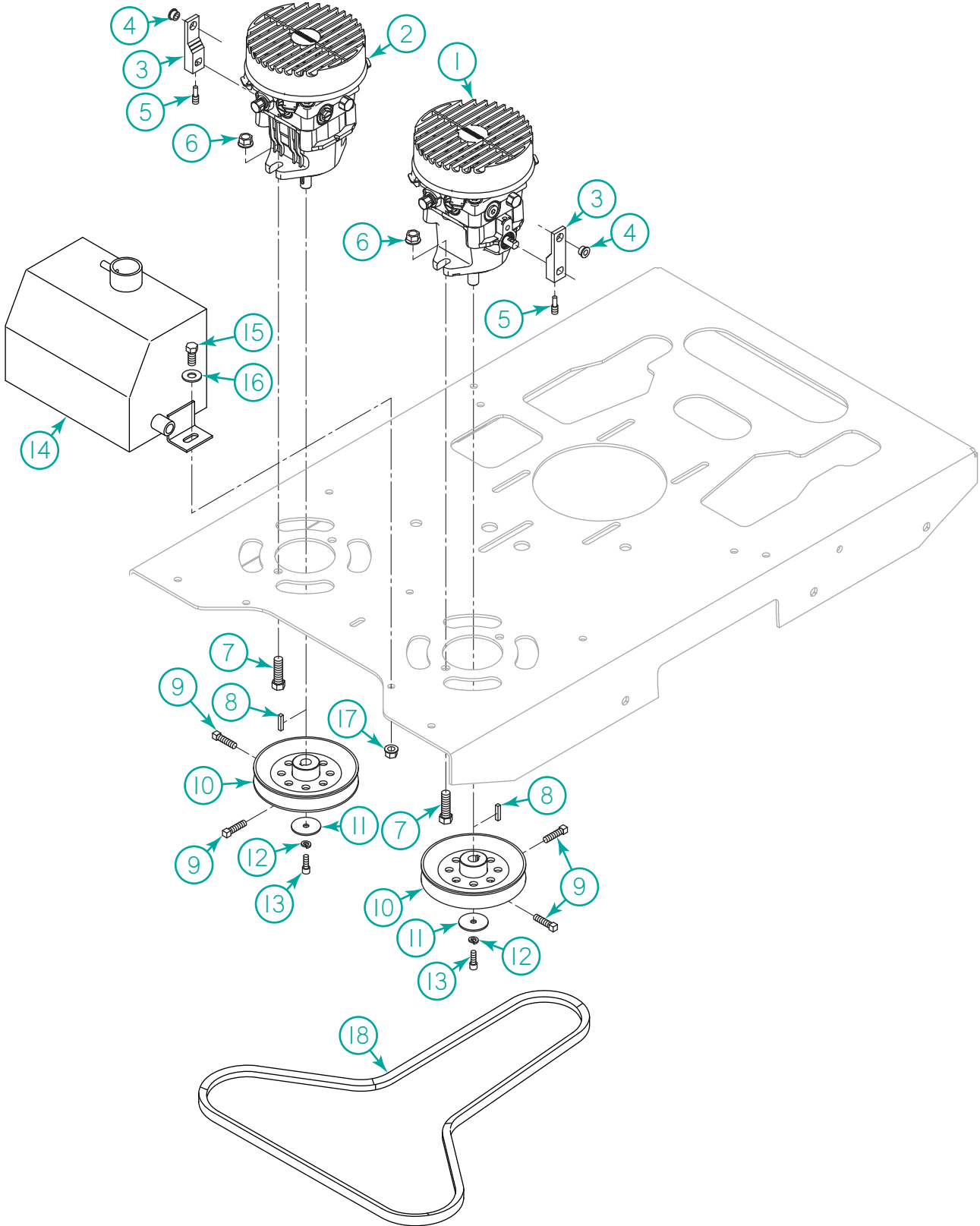
OCDC



OCDC

Item	Part No.	Description	Qty.
	68122-50	Assembly, 50" OCDC (Incl 1, 2, 3, 4 and 5-11)	1
	300350	Assembly, 60" OCDC (Incl 1A, 2A, 3, 4A and 5-11)	1
	72122	Assembly, 72" OCDC (Incl 1B, 2A, 3, 4B and 5-11)	1
1	68122-50W	Weldment, 50" OCDC	1
1A	01653-00	Weldment, 60" OCDC	1
1B	01681-03	Weldment, 72" OCDC	1
2	900098	Weldment, 50" OCDC Handle	1
2A	DUP-900014	Weldment, 60/72" OCDC Handle	1
3	67258	Grip, 1/4 x 1" Black	1
4	97122	Assembly, Adjustment Rod 50" (Incl 4B and 4C)	1
4A	DUP-68130	Assembly, Adjustment Rod 60/72" (Incl 4B and 4C)	1
4B	N-155	Nut, 3/8-24 Yoke	1
4C	N-184	Nut, 3/8-24 HHCS	1
5	N-107	Nut, 3/8-16 Nyloc	1
6	W-104	Washer, 3/8 Flat	1
7	20252	Spring	1
8	B-179	Bolt, 3/8-16 x 2-1/2" HHCS PT	1
9	68142	Plug, 1" Square Plug	1
10	20224	Clip, Pin Hair #13	2
11	P-102	Pin, 3/8 x 1-1/4" Clevis	1
12	B-110	Bolt, 3/8-16 x 3/4" HHCS PT Gr. 5	2
13	B-135	Bolt, 3/8-16 x 1" HHCS FT Gr. 5	1
14	N-216	Nut, 3/8-16 Flange Nyloc	3

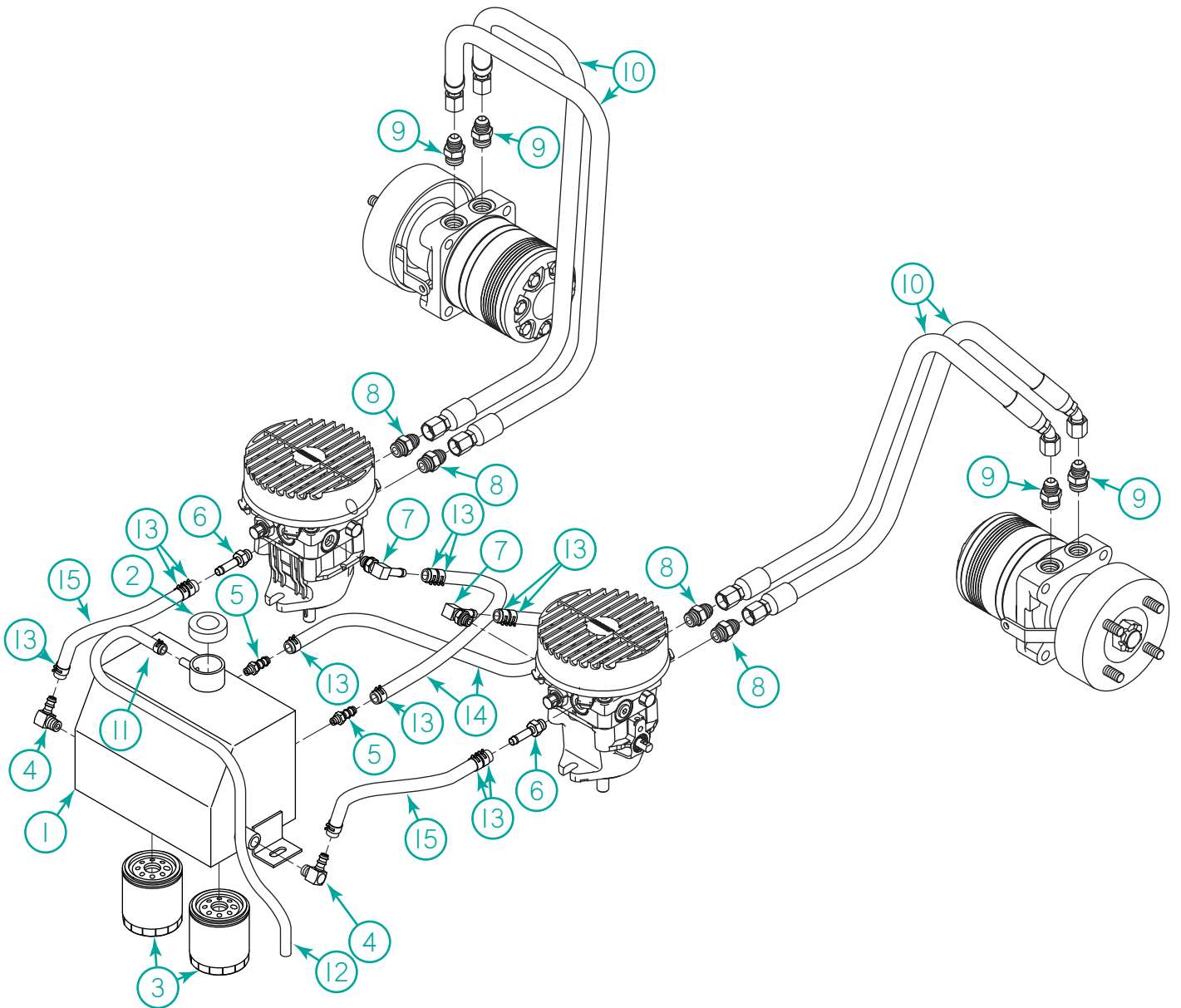
Pump Drive



Pump Drive

Item	Part No.	Description	Qty.
1	200923	Pump-Hydro-Gear LH w/Fan	1
2	200924	Pump-Hydro-Gear RH w/Fan	1
3	200280	Arm - Control Pump Hydrogear w/Damper	2
4	20222	Bushing - Nylon .312 ID	2
5	B-322	Bolt-5/16-18X3/8 Socket Head Dog Point	2
6	N-154	Nut-7/16-14 Whiz	4
7	B-153	Bolt - 7/16-14X1-1/4 HHCS FT Gr.5 Zinc	4
8	K-112	Key - M5 X M25 Square	2
9	S-108	Screw - 5/16-18 x 1 Square Set Screw	4
10	200031	Pulley - 5.25" OD x 15mm Bore	2
11	W-134	Washer - 1/4 Fender	2
12	W-179	Washer - M6 Lock	2
13	B-269	Bolt - M6X1.00X16 HHCS FT Zinc	2
14	200033	Tank - Hydraulic LT	1
15	B-137	Bolt - 3/8-16X3/4 HHCS FT Gr.5	3
16	W-104	Flat Washer, 3/8	3
17	N-108	Nut - 3/8"-16 Flange Whiz, Gr.2	3
18	2006B64R	Belt, Drive System	1

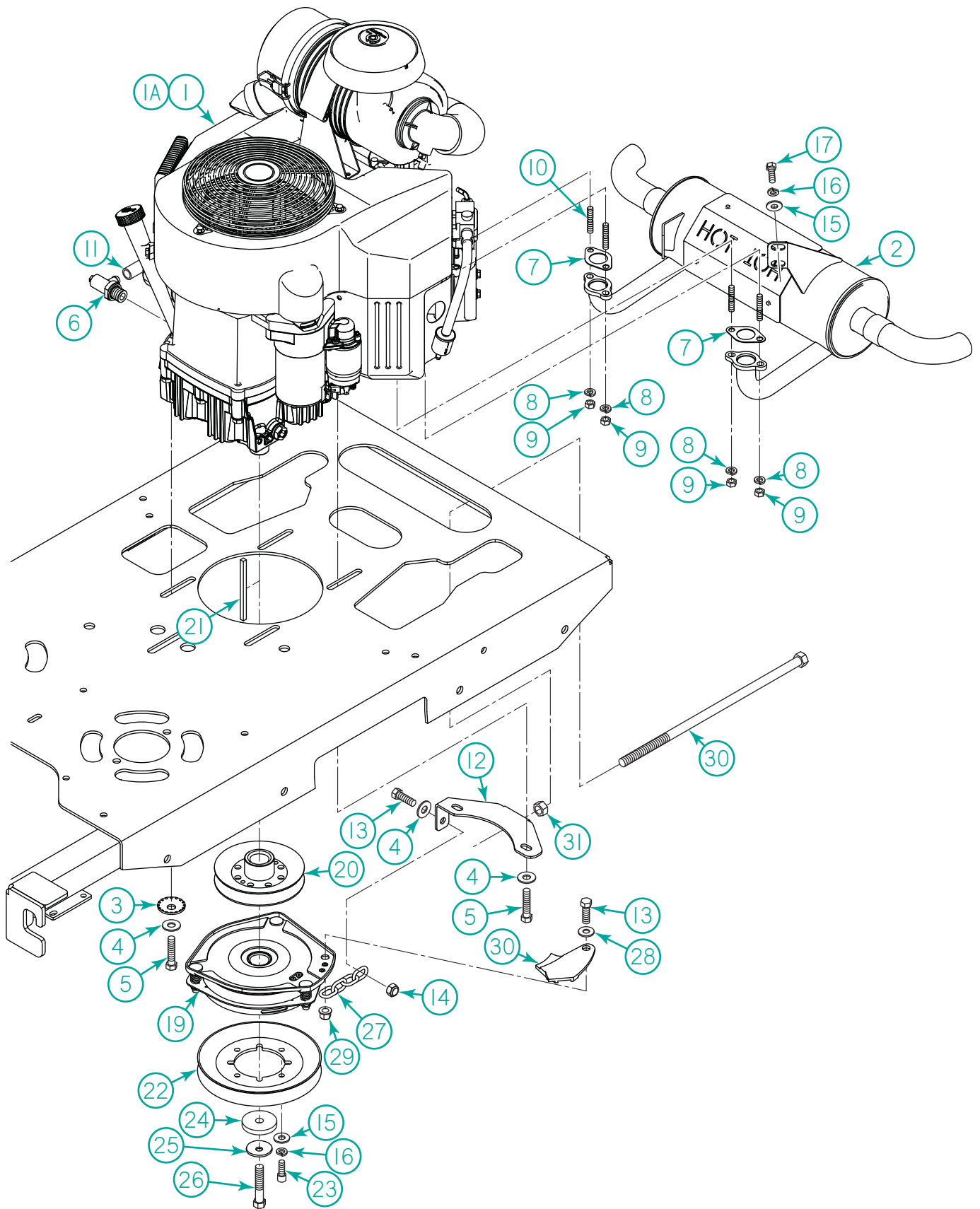
Hydraulic System



Hydraulic System

Item	Part No.	Description	Qty.
1	200033	Tank - Hydraulic LT	1
2	40117-R	Cap - Hydraulic Tank w/Rubber Seal	1
3	68140	Filter - Hyro Zinga 40 Micron	2
4	60125	Fitting - 90 3/8 Pipe Thread 3/8 Barb	2
5	DUP-67014	Fitting - 90 3/8 Barbed Insert x 1/4 MPT	2
6	65072	Fitting - 3/8 O-Ring - 3/8 Bead	2
7	DUP-67015	Fitting - 3/8 O-Ring - -3/8" Bead 90°	2
8	200358	Adapter - 8 JIC - 8 ORB	4
9	200308	Adapter - 5/8" SAE - 1/2" JIC	4
10	200452	Asm-Hyd Hose -8JICF -8JICF 45deg	4
11	72012	Clamp - Hose 5/16" f/9/16" Line	1
12	97374	Hose - 5/16 Black/Inches	/IN
13	DUP-67013	Clamp - Spring 3/8	10
14	60109	Hose - 3/8 Black Oil Line	/IN
15	200027	Hose - Hydro Black Ext Braid 3/8"	/IN

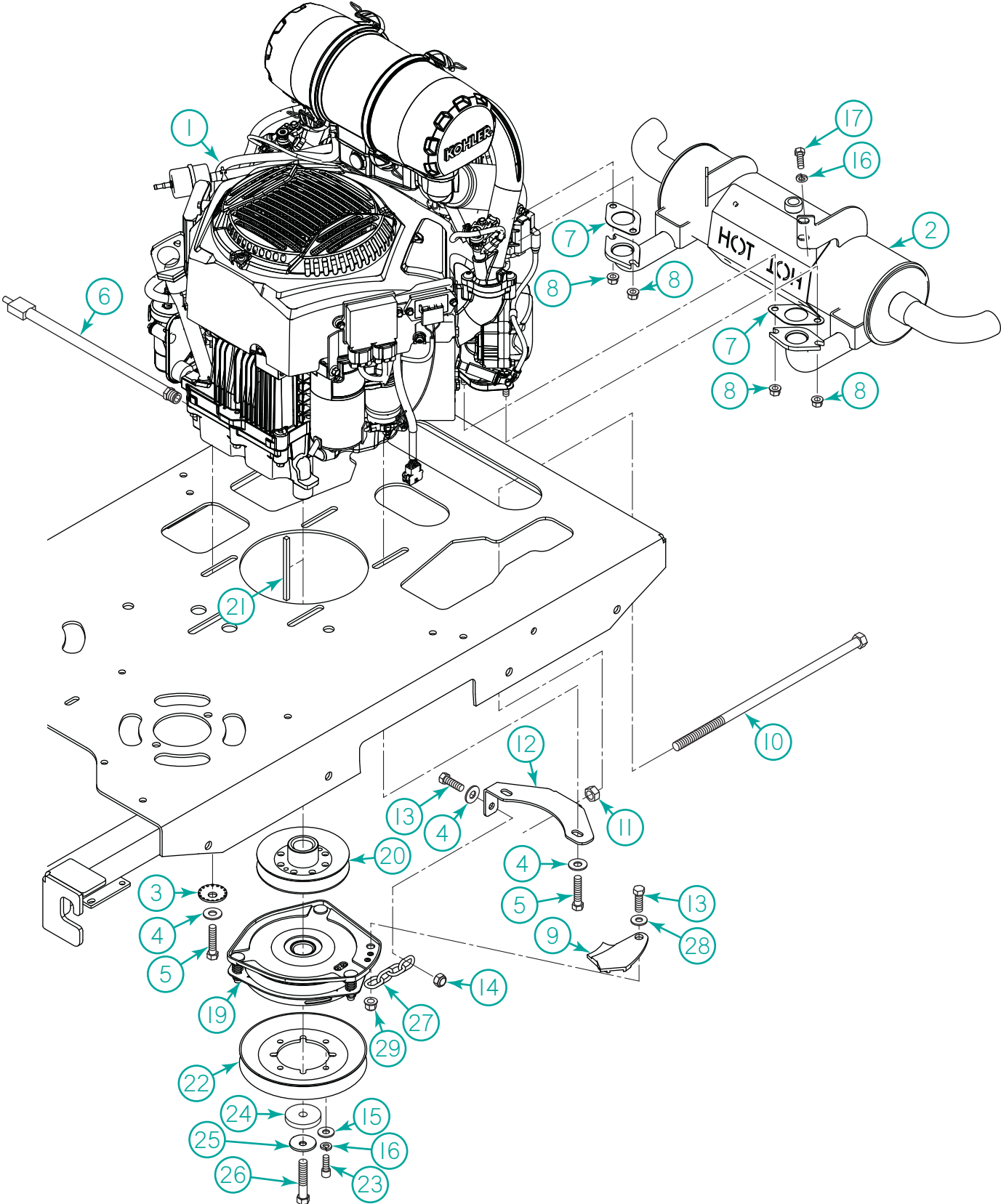
Kawasaki Engine



Kawasaki Engine

Item	Part No.	Description	Qty.
1	600536	Engine, Kawasaki 25 HP FX801V	1
1A	600415	Engine, Kawasaki 27 HP FX850V	1
2	600559	Muffler, Kawasaki 852cc Dual	1
3	W-158	Washer, 1/2 ID x 1-5/8 OD Tooth Belleville	1
4	W-104	Washer, 3/8 Flat	5
5	B-158	Bolt, 3/8-16 x 1-1/2" HHCS PT Gr. 5 Clear Zinc	4
6	902018	Valve, Drain Assembly Kawasaki	1
7	902038	Gasket, Muffler	2
8	902547	Washer, Spring 8mm	4
9	902548	Nut, M8-1.25 Hex	4
10	902669	Bolt, Stud M8-1.25 x 18 mm	4
11	600030	Hose, 1/2 ID x 3/4 OD Fuel Line/Inches	1
12	600442	Weld, Bracket Engine Pullback Black	1
13	B-108	Bolt, 3/8-16 x 1" HHCS FT Gr. 5 Clear Zinc	2
14	N-107	Nut, 3/8-16 Nyloc Gr. A Clear Zinc	1
15	W-161	Washer, M8 Flat	8
16	W-163	Washer, M8 Lock	8
17	B-220	Bolt, M8-1.25 x 20 HHCS FT Gr. 8.8 Clear Zinc	4
18	500128	Harness, Wiring Kawasaki Adapter (Not Shown)	1
19	500095	Clutch, Ogura GT 3.5-DC01	1
20	600448	Pulley, 4.867EDB x 1-1/8" Bore	1
21	K-116	Key, 1/4 Square x 3-3/4"	1
22	600361	Pulley, Clutch Ogura 6.75	1
23	B-221	Bolt, M8-1.25 x 20 SHCS Gr. 12.9	4
24	600422	Spacer, .460 ID x 2.00 OD x .25 Th Zinc Plated	1
25	W-144	Washer, 7/16 SS Belleville	1
26	B-199	Bolt, 7/16-20 x 2" HHCS PT Gr. 8 Yellow Zinc	1
27	500136	Chain, Passing, 2/0 5 Link Plated	1
28	W-113	Washer, 5/16 Flat	1
29	N-216	Nut, 3/8-16 Flange Nyloc	1
30	500117	Cover, Wire Ogura Clutch	1
31	B-279	Bolt, 1/2-13 x 12" HHCS PT Gr. 2 Clear Zinc	1
32	N-110	Nut, 1/2-13 Hex	1

Kohler Engine

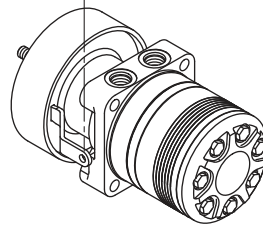
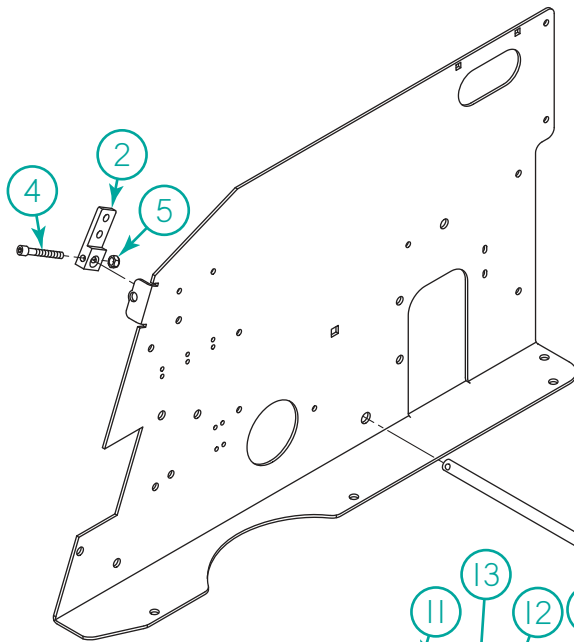
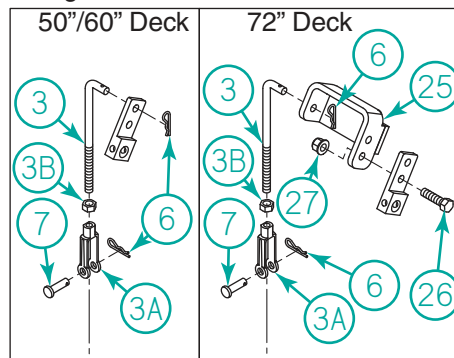


Kohler Engine

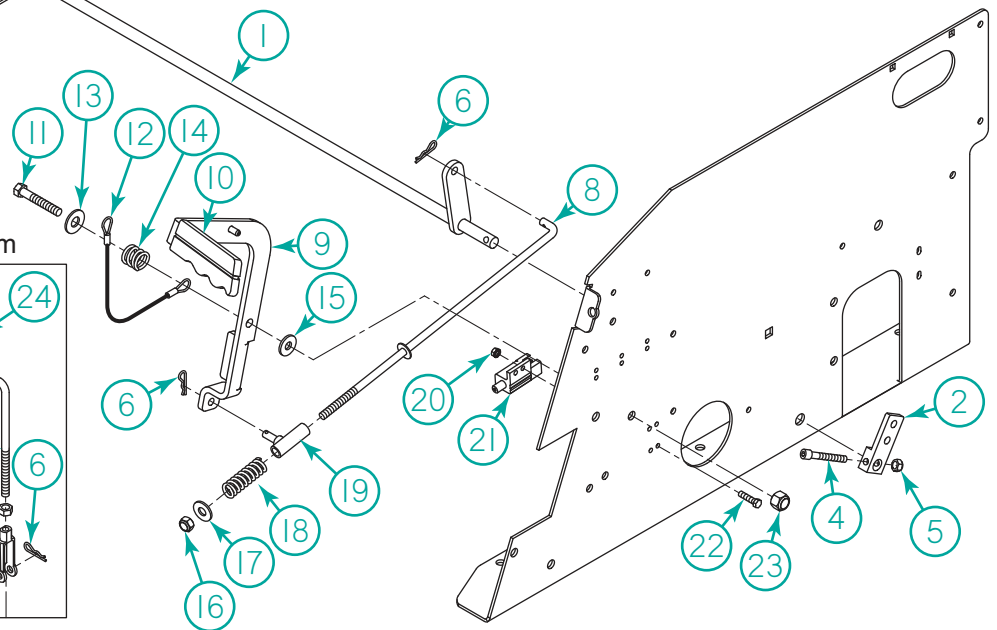
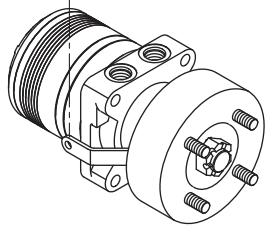
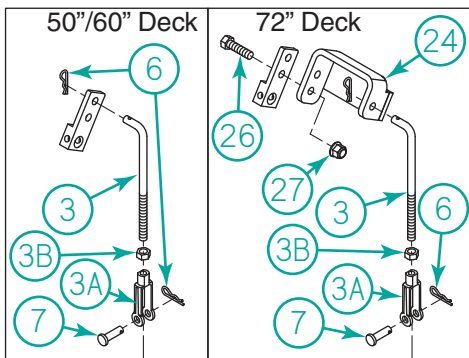
Item	Part No.	Description	Qty.
1	600537	Engine, Kohler 27 HP ECV850 EFI	1
2	DUP-600554	Muffler, Kohler 842cc EFI Dual	1
3	W-158	Washer, 1/2 ID x 1-5/8 OD Tooth Belleville	1
4	W-104	Washer, 3/8 Flat	5
5	B-109	Bolt, 3/8-16 x 1-1/4" HHCS PT Gr. 5 Clear Zinc	4
6	600436	Hose, Drain Pan Oil W/ EZ Valve	1
7	902949	Gasket, Muffler	2
8	901277	Nut, M8-1.25 Flange	4
9	500117	Cover, Wire Ogura Clutch	1
10	B-279	Bolt, 1/2-13 x 12" HHCS PT Gr. 2 Clear Zinc	1
11	N-110	Nut, 1/2-13 Hex	1
12	600442	Weld, Bracket Engine Pullback Black	1
13	B-108	Bolt, 3/8-16 x 1" HHCS FT Gr. 5 Clear Zinc	2
14	N-107	Nut, 3/8-16 Nyloc Gr. A Clear Zinc	1
15	W-161	Washer, M8 Flat	4
16	W-163	Washer, M8 Lock	8
17	B-220	Bolt, M8-1.25 x 20 HHCS FT Gr. 8.8 Clear Zinc	4
18	500129	Harness, Wiring Kohler Adapter (Not Shown)	1
19	500095	Clutch, Ogura GT 3.5-DC01	1
20	600448	Pulley, 4.867EDB x 1-1/8" Bore	1
21	K-116	Key, 1/4 Square x 3-3/4"	1
22	600361	Pulley, Clutch Ogura 6.75	1
23	B-221	Bolt, M8-1.25 x 20 SHCS Gr. 12.9	4
24	600422	Spacer, .460 ID x 2.00 OD x .25 Th Zinc Plated	1
25	W-144	Washer, 7/16 SS Belleville	1
26	B-199	Bolt, 7/16-20 x 2" HHCS PT Gr. 8 Yellow Zinc	1
27	500136	Chain, Passing, 2/0 5 Link Plated	1
28	W-113	Washer, 5/16 Flat	1
29	N-216	Nut, 3/8-16 Flange Nyloc	1

Brake Components

Right Side Brake Shaft Pivot Arm



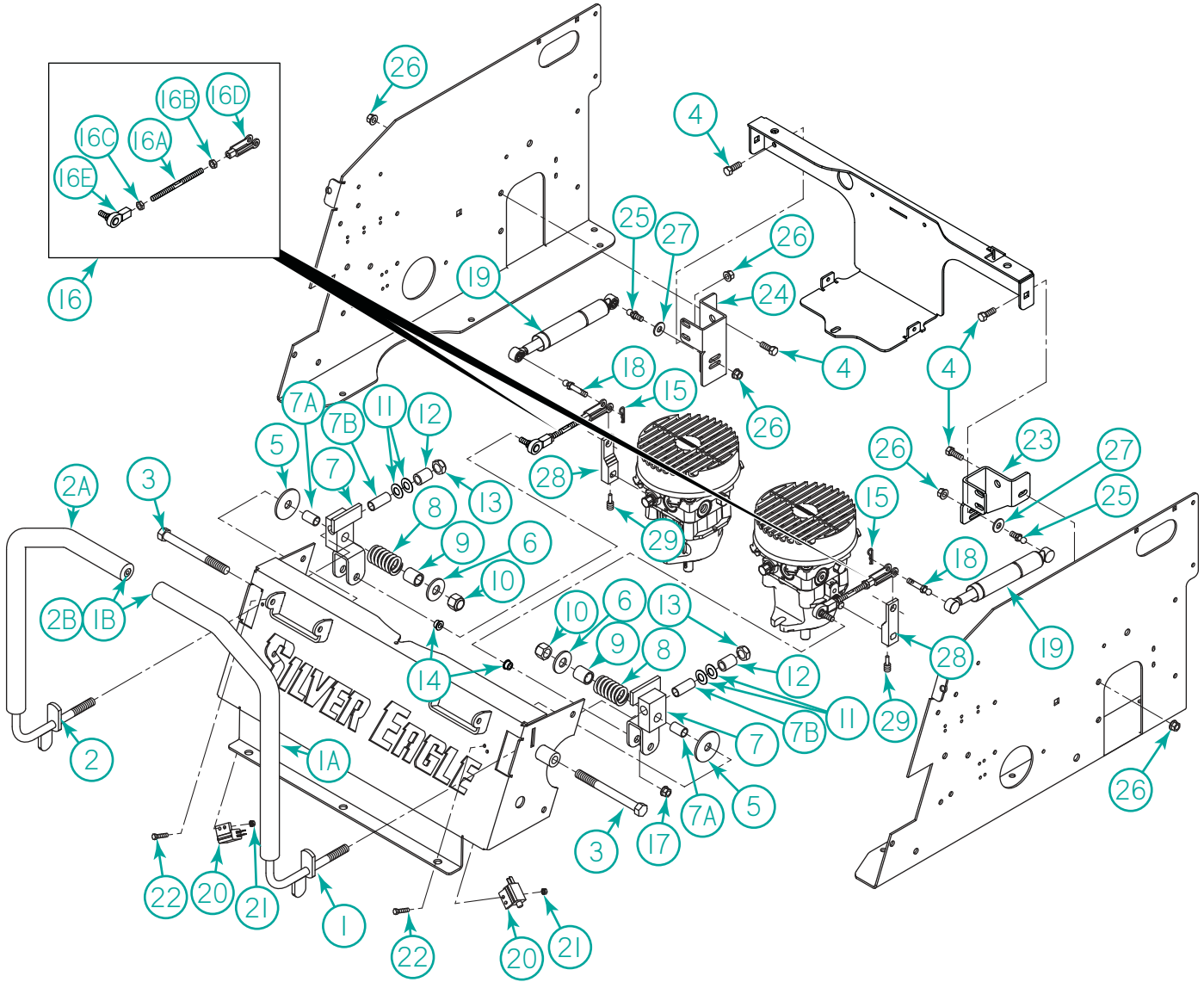
Left Side Brake Shaft Pivot Arm



Brake Components

Item	Part No.	Description	Qty.
1	DUP-400095	Weldment - Rod Brake Pivot Cr	1
2	DUP-400094	Arm - Pivot Shaft Brake	2
3	400443	Rod - Linkage Brake w/Nut & Yoke	2
3A	20214	Nut - Yoke - 5/16"-24 Adjustable	
3B	N-105	Nut - 5/16 - 24 HHCS	
4	B-268	Bolt - 1/4-20X1-1/2 SHCS	2
5	N-176	Nut - 1/4 - 20 Nyloc	2
6	20224	Clip - Pin Hair #13	6
7	P-101	Pin - 5/16 X 1 Clevis	2
8	DUP-400093	Rod - Brake - Cross	1
9	DUP-400089	Weldment-Brake Handle	1
10	67258-R	Grip - 1/4 x 1 Red	1
11	B-124	Bolt - 3/8-16 X 1 3/4 HHCS Gr.5 Bolt	1
12	40218	Cable - SEAT	1
13	W-104	Washer - 3/8 Flat	1
14	DUP-400090	Spring - Brake Handle	1
15	W-125	Washer - 3/8 x 7/8 Nylon	1
16	N-204	Nut - 5/16-24 Nyloc Jam	1
17	W-113	Washer - 5/16 Flat	1
18	DUP-400096	Spring - Brake Tension	1
19	100042	Trunnion - Linkage Brake	1
20	N-210	Nut-M5-.8 HH w/Star Washer	2
21	500019	Switch - Brake	1
22	B-258	Bolt - M5X.8X16 HHCS FT 8.8	2
23	N-107	Nut - 3/8"-16 Nyloc	1
24	402029	Bracket, Brake LH Clear Zinc	1
25	402028	Bracket, Brake RH Clear Zinc	1
26	B-258	Bolt, 5/16-18 x 1" HHCS Gr. 5 Zinc	4
27	N-217	Nut, 5/16-18 Flange Nyloc	4

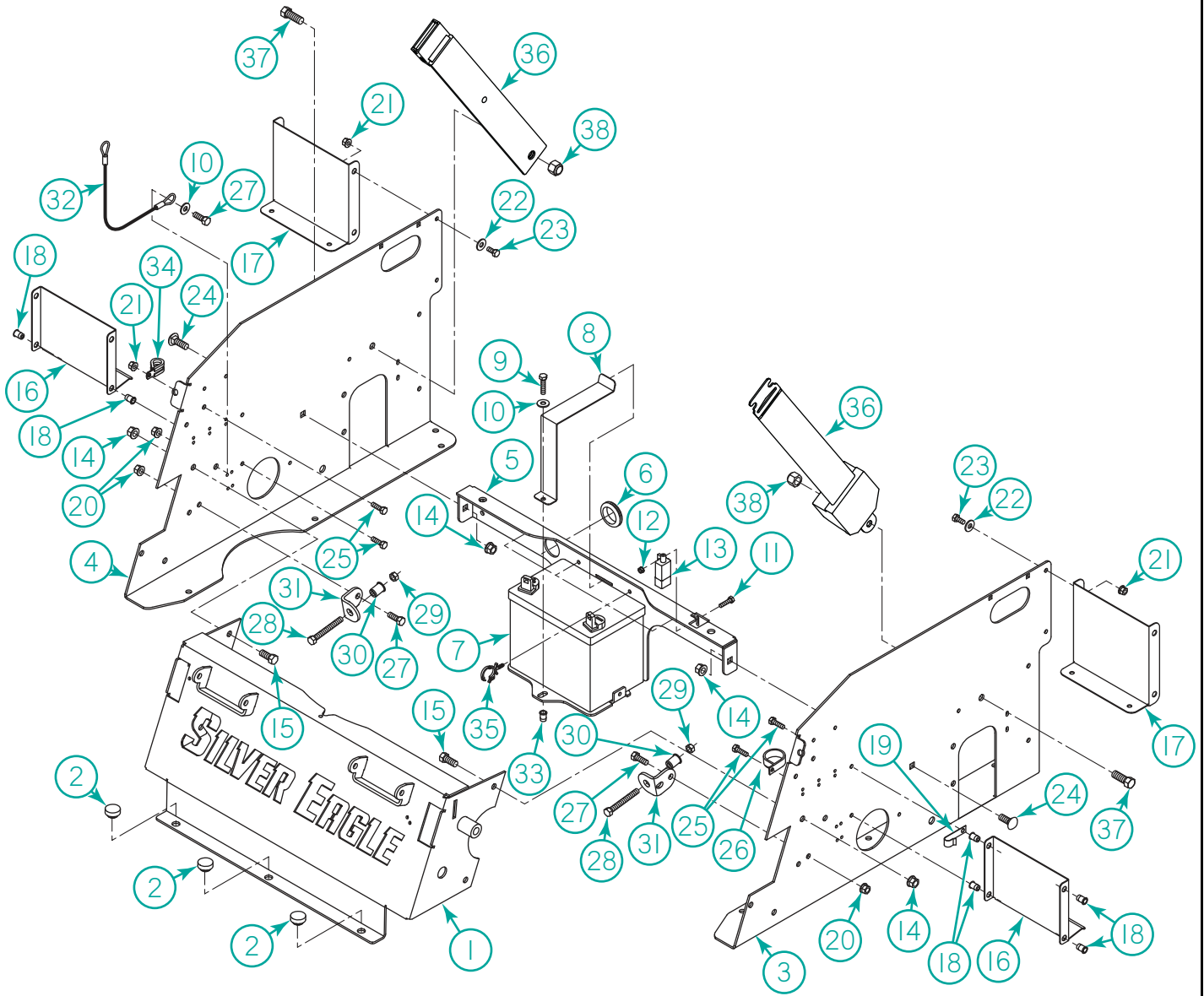
Steering Components



Steering Components

Item	Part No.	Description	Qty.
1	400281	Assembly - Lever Steering LH	1
1A/2A	400201	Grip - Foam	1
1B/2B	DUP-400228	Cap - End Plastic	2
2	DUP-400280	Assembly - Lever Steering RH	1
3	B-402	Bolt-1/2-3x4.5 HHCS PT Gr.5, Knurled	8
4	B-107	Bolt - 5/16-18X3/4 HHCS FT Gr.5	
5	W-204	Washer, 1/2 ID x 2.00 OD Nylon	2
6	W-109	Washer - 1/2 Flat	2
7	200037	Weldment - Block Lever Steering	2
7A	20238	Bushing, 1/2 x 5/8 x 1" Bronze	2
7B	20276	Bushing, 1/2 x 5/8 x 1-1/2" Bronze	2
8	100107	Spring, Suspension	2
9	10203	Spacer - Wheel Front	2
10	N-143	Nut - 1/2 - 13 Nyloc	2
11	W-192	Washer - Belleville 1.0x.505x.072	4
12	200232	Bushing - 3/4" OD. X 1/2" ID X 1" Length	2
13	N-126	Nut - 1/2 - 13 Nyloc Jam	2
14	20222	Bushing - Nylon .312 ID	4
15	20224	Clip - Pin Hair #13	2
16	200938	Adjustable Steering Linkage	2
16A	200939	Rod - Adjustable Steering Linkage Clear Zinc	2
16B	N-226	Nut, 5/16-24 Half Jam RH Thread Gr. 4 Clear Zinc	2
16C	N-225	Nut, 5/16-24 Half Jam LH Thread Gr. 4 Clear Zinc	2
16D	20214	Yoke-5/16-24 Adjustable	2
16E	200709	Rod End, Spherical Stud, Female LH Thread	2
17	N-204	Nut, 5/16-24 Nyloc Gr. A Clear Zinc	2
18	200115	Pin - Ballvis 5/16"x1.0"	2
19	200114	Damper - AVM P7062	2
20	500013	Switch - Steering Arm SE	2
21	N-210	Nut-M5-.8 HH w/Star Washer Zinc	4
22	B-258	Bolt - M5X.8X16 HHCS FT 8.8 Zinc	4
23	200965	Bracket - Damper Left	1
24	200112	Bracket - Damper Right	1
25	200116	Ball Stud - AVM PC477-2	2
26	N-103-W	Nut - 5/16 - 18 Whiz	10
27	W-161	Washer - M8 Flat	2
28	200280	Arm - Control Pump	2
29	B-322	Bolt-5/16-18X3/8 Socket Head Dog Point	2

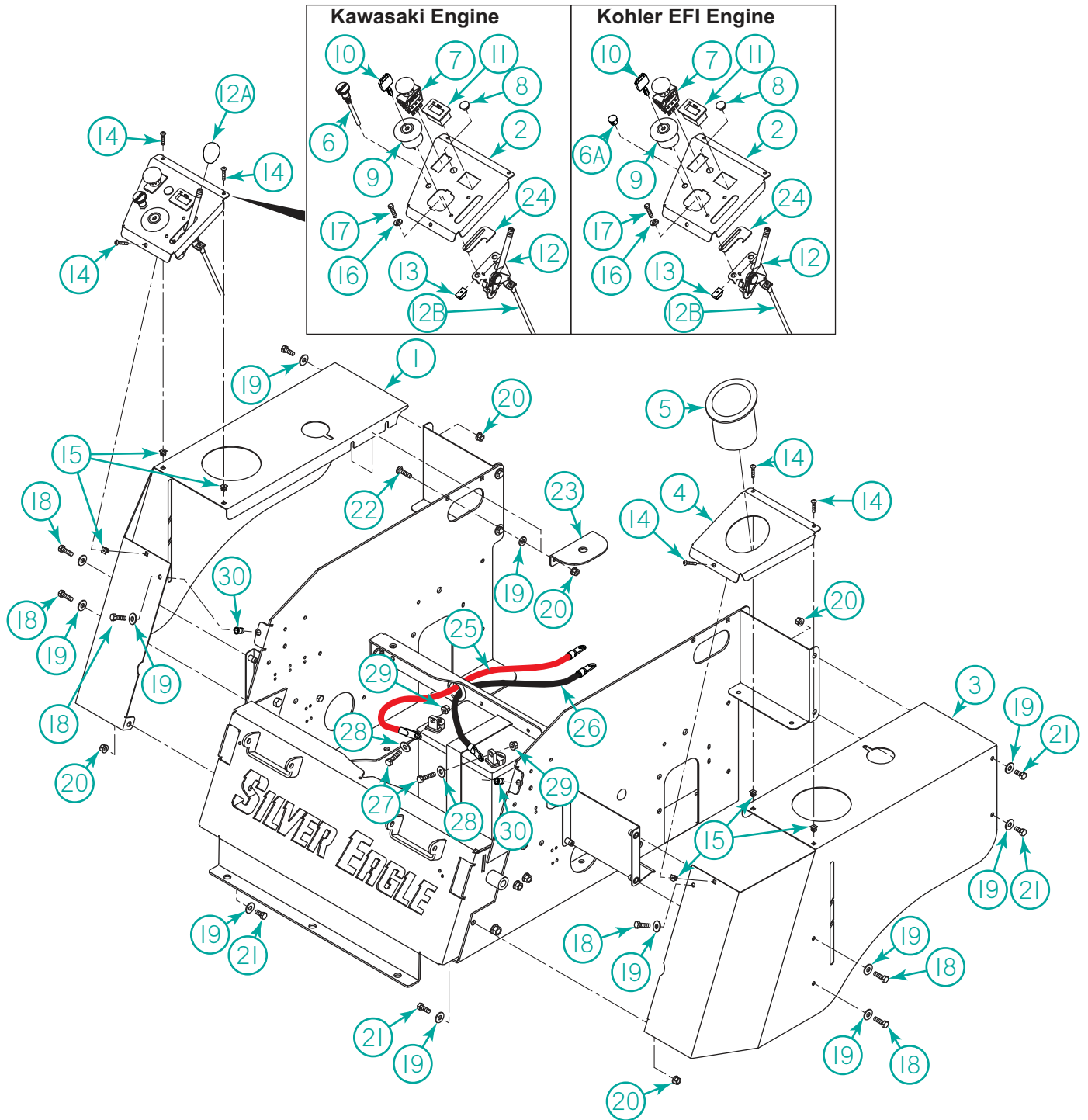
Inner Fender



Inner Fender

Item	Part No.	Description	Qty.
1	401973	Weldment, Front Pan Black	1
2	900068	Pad, Rubber	3
3	400937	Bracket, Inner Fender LH Black	1
4	400938	Bracket, Inner Fender RH Black	1
5	400092	Bracket, Battery Crossmember	1
6	900069	Grommet, Rubber	1
7	20225	Battery, Standard	1
8	DUP-400098	Strap, Battery	1
9	B-172	Bolt, 1/4-20 x 1" HHCS FT Gr. 5 Zinc	1
10	W-102	Washer, 1/4 Flat	2
11	B-258	Bolt, M5-0.8 x 16 mm HHCS FT 8.8 Zinc	2
12	N-210	Nut, M5-0.8 Hex w/ Star Washer	2
13	500019	Switch, Brake SE	1
14	N-108	Nut, 3/8-16 Whizlock Flange	6
15	B-137	Bolt, 3/8-16 x 3/4" HHCS FT Gr. 5 Zinc	4
16	400464	Bracket, Support Fuel Tank 2 Gal. SE	2
17	400466	Bracket, Fuel Tank 4 Gal. Rear	2
18	N-152S	Nut, 1/4-20 Insert Flange SS	10
19	C-101	Clip, Wire J Hook	1
20	N-103-W	Nut, 5/16-18 Whizlock Flange	5
21	N-101	Nut, 1/4-20 SS Whizlock Flange	5
22	W-153	Washer, 1/4 SS Flat	4
23	B-103	Bolt, 1/4-20 x 1/2" HHCS Stainless	4
24	B-110	Bolt, 3/8-16 x 3/4" Carriage	2
25	B-102	Bolt, 1/4-20 x 3/4" HHCS FT Gr. 5 Zinc	5
26	C-113	Clamp, 1" Rubber Coated	1
27	B-107	Bolt, 5/16-18 x 3/4 HHCS FT Gr. 5 Zinc	5
28	B-129	Bolt, 5/16-18 x 2-1/4" HHCS FT LCS Zinc	2
29	N-103	Nut, 5/16-18 HHCS	2
30	N-153	Nut, 5/16-18 Insert Flange	2
31	DUP-400083	Bracket, Stop Steering	2
32	40218	Cable, Seat	1
33	N-152	Nut, 1/4-20 Flange Insert Zinc	2
34	C-112	Clamp, 1/2" Rubber Coated	1
35	401113	Clip, Reclosable Harness	4
36	900387	Belt - Seat Retractable	1
37	B-312	Bolt - 7/16-20X1 HHCS FT Gr.5 Zinc	2
38	N-135	Nut - 7/16 - 20 Nyloc	3
39	500146	Harness, Wiring Main Rope (Not Shown, Incl 39A and 39B)	1
39A	40229	Switch, Tilt	1
39B	500160	Module, Safety Control	

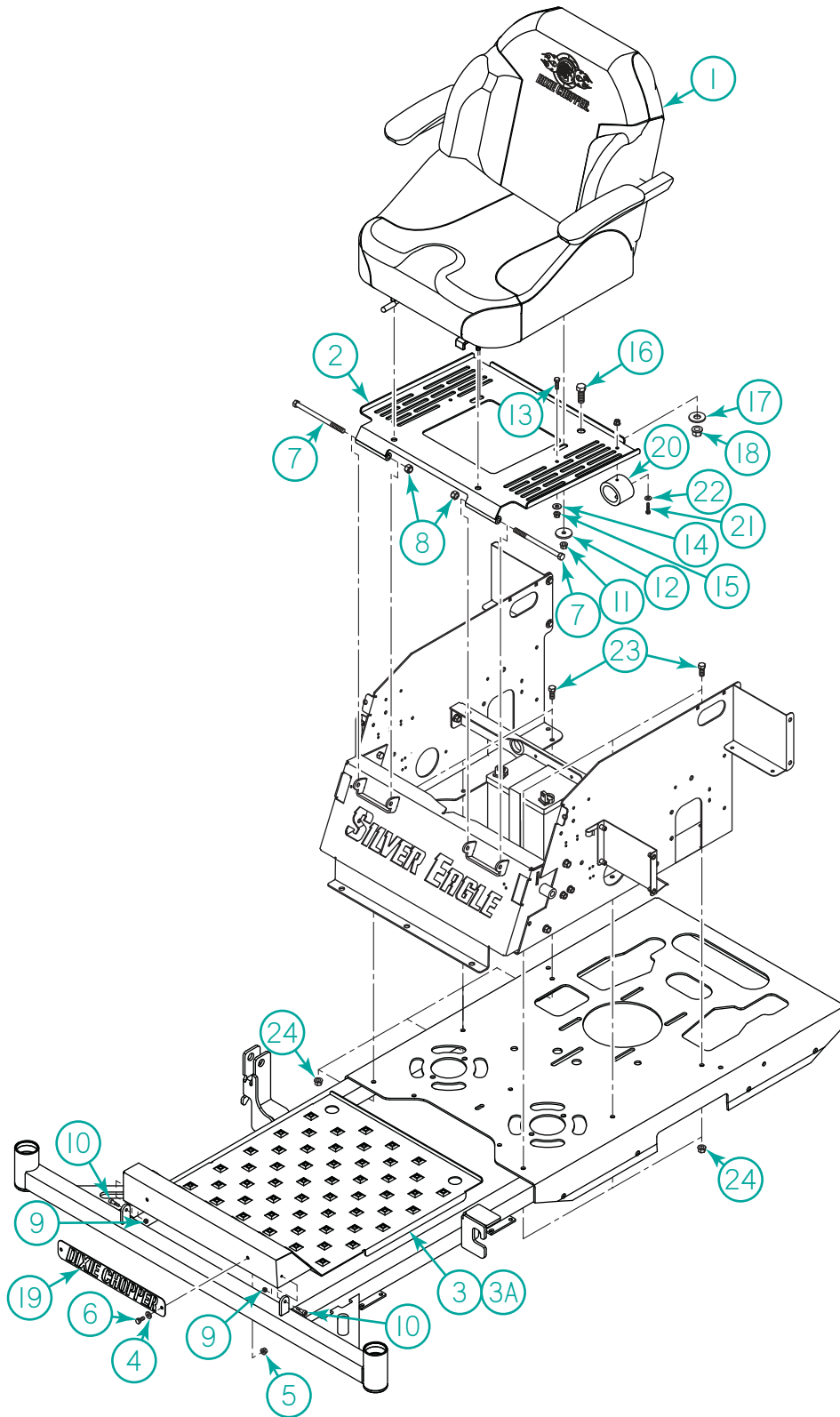
Outer Fenders and Controls



Outer Fenders and Controls

Item	Part No.	Description	Qty.
1	401830	Fender, Outer Shell RH	1
2	400579	Panel, Gauge and Throttle	1
3	401831	Fender, Outer Shell LH	1
4	400463	Holder, Cup 4 Gal. Fender	1
5	400112	Holder, Cup Plastic	1
6	600072	Cable, Choke 63" Long	1
6A	400227	Plug, Finishing 3/8 x 15/32" Plastic (Kohler EFI Engines)	1
7	4174684	Switch, PTO	1
8	400266	Plug, Snap In Plastic Black	1
9	500017	Switch, Ignition	1
10	500018	Key, Ignition	1
11	DUP-500193	Meter, Hour/Tach/Volt Non EFI	1
11A	500195	Meter, Hour/Tach/Volt EFI	1
12	401590	Assembly, Throttle Handle w/ Knob	1
12A	902794	Knob	1
12B	902926	Cable, Throttle w/ Clip	1
13	C-105	Clip, #10-24 Nut	2
14	S-118	Screw, #8 x 1/2 SS Round Head Phlp Screw	6
15	N-190	Nut, #8 Plastic Insert	6
16	W-152	Washer, #10 Flat SS	2
17	B-203	Bolt, #10-24 x 3/4 HHCS FT SS	2
18	B-209	Bolt, 1/4-20 x 3/4" SS Bolt	6
19	W-153	Washer, 1/4 SS Flat	14
20	N-101	Nut, 1/4-20 SS Whizlock Flange	8
21	B-103	Bolt, 1/4-20 x 1/2" HHCS Stainless	6
22	B-346	Nolt, 1/4-20 x 3/4" Flat Head Carriage	2
23	400584	Bracket, Mount Ball Valve	1
24	401833	Stop, Throttle	1
25	500020	Cable, Red Positive 28" LT	1
26	500075	Cable, Battery Black 16"	1
27	B-102	Bolt, 1/4-20 x 3/4" HHCS FT Gr. 5 Zinc	2
28	W-102	Washer, 1/4 Flat	4
29	N-102	Nut, 1/4-20 Whizlock Flange	2
30	N-152S	Nut, 1/4-20 SS Insert Flange	2

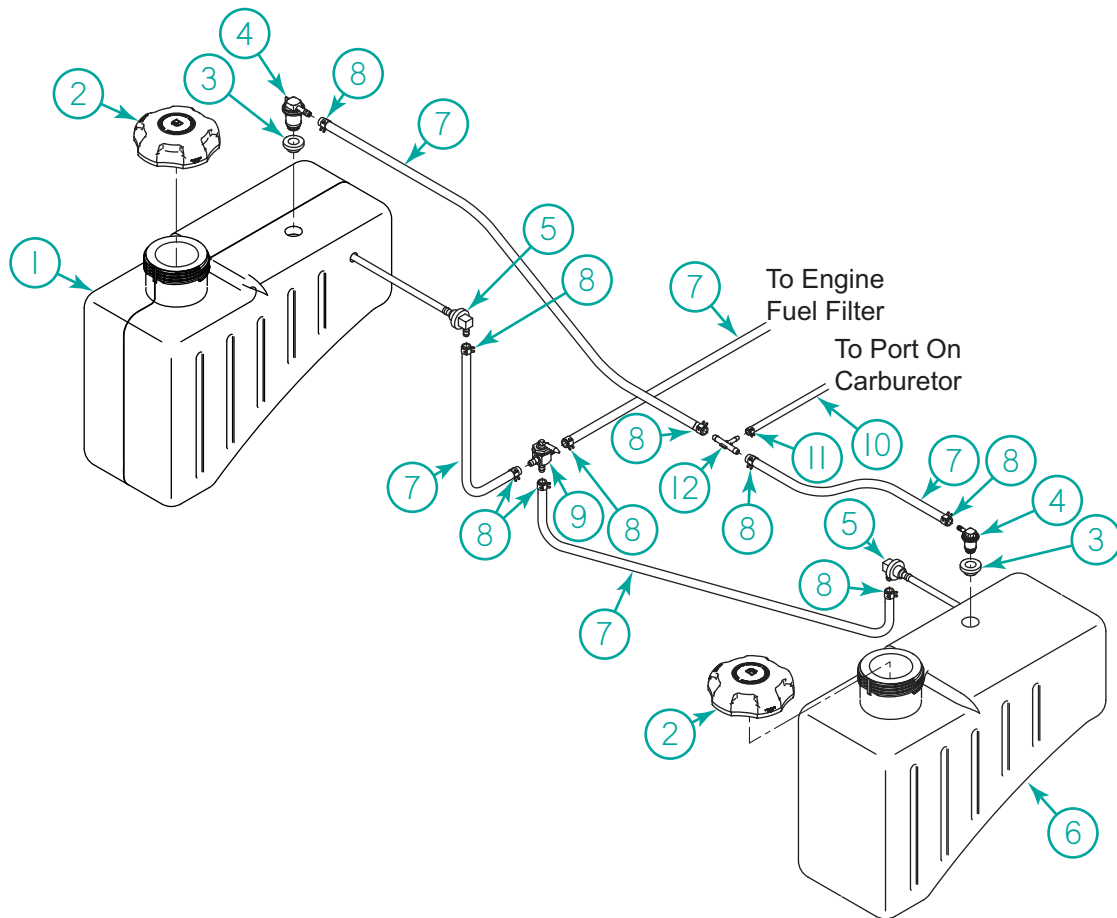
Body



Body

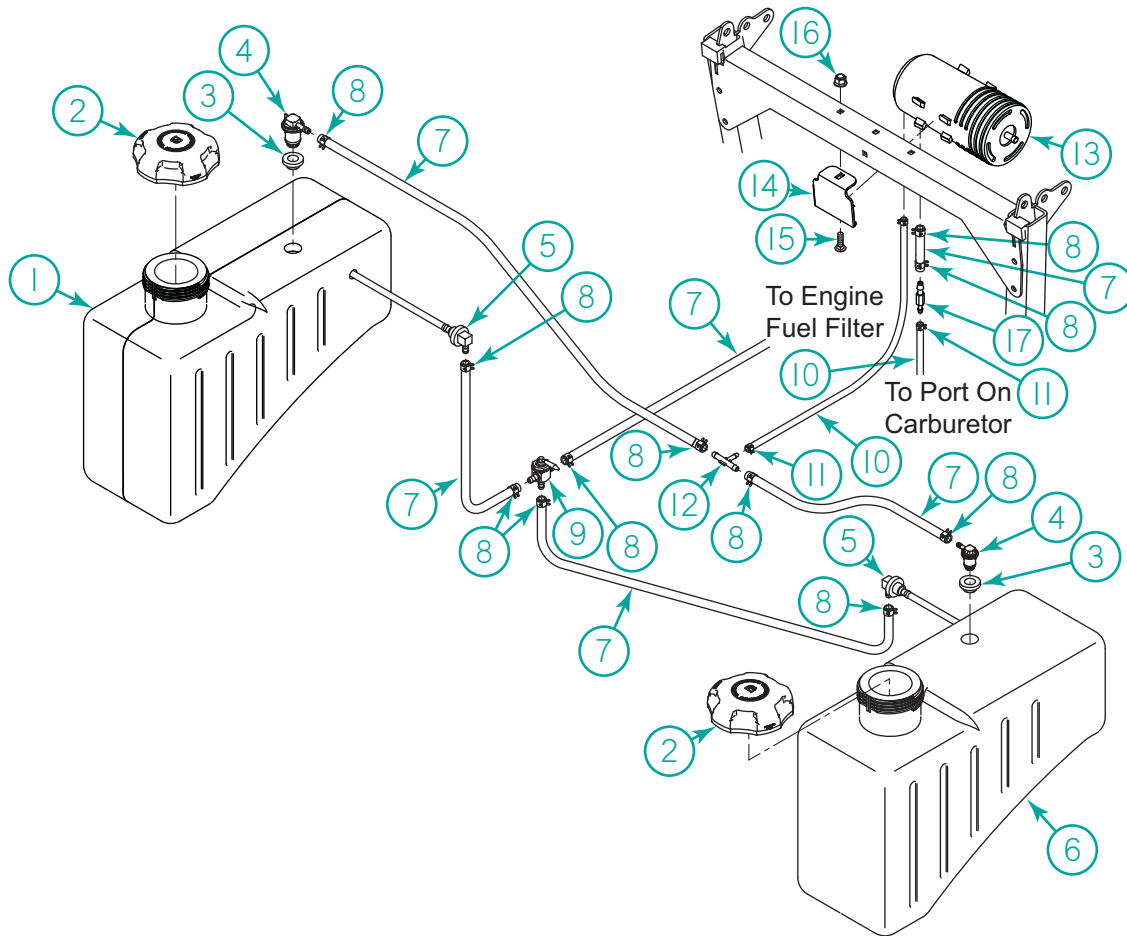
Item	Part No.	Description	Qty.
1	401962	Seat, SK261 Dixie Chopper	1
2	401860	Pan, Seat Suspension	1
3	401986	Bracket, Floor Pan Turret Black (50/60" Decks)	1
3A	401989	Bracket, Floor Pan Turret Black (72" Decks)	1
4	W-153	Washer, 1/4 SS Flat	2
5	N-101	Nut, 1/4-20 SS Whizlock Flange	2
6	B-103	Bolt, 1/4-20 x 1/2" HHCS Stainless	2
7	B-229	Bolt, 3/8-16 x 5" HHCS PT	2
8	N-107	Nut, 3/8-16 Nyloc	2
9	N-173	Nut, #10-24 Nyloc	2
10	B-425	Bolt, 1/4 x 3/8 x #10-24 x 3/8 Shoulder SCHS Alloy	2
11	N-103-W	Nut, 5/16-18 Whizlock Flange	4
12	W-118	Washer, 5/16 x 1-1/2" Fender	4
13	B-102	Bolt, 1/4-20 x 3/4" HHCS FT Gr. 5 Zinc	2
14	W-102	Washer, 1/4 Flat	4
15	N-102	Nut, 1/4-20 Whizlock Flange	2
16	B-117	Bolt, 1/2-13 x 1-1/4" HHCS	1
17	W-109	Washer, 1/2 Flat	1
18	N-157	Nut, 1/2-13 Whizlock Flange	1
19	401985	Bracket, Back Plate	1
20	402005	Bumper, GBR 6 Seat Suspension	2
21	B-172	Bolt, 1/4-20 x 1" HHCS FT Gr. 5 Clear Zinc	2
22	N-219	Nut, 1/4-20 Flange Nyloc	2
23	B-137	Bolt, 3/8-16 x 3/4" HHCS Gr. 5 Clear Zinc	6
24	N-108	Nut, 3/8-16 Whizlock Flange	6

Fuel System - 49 State



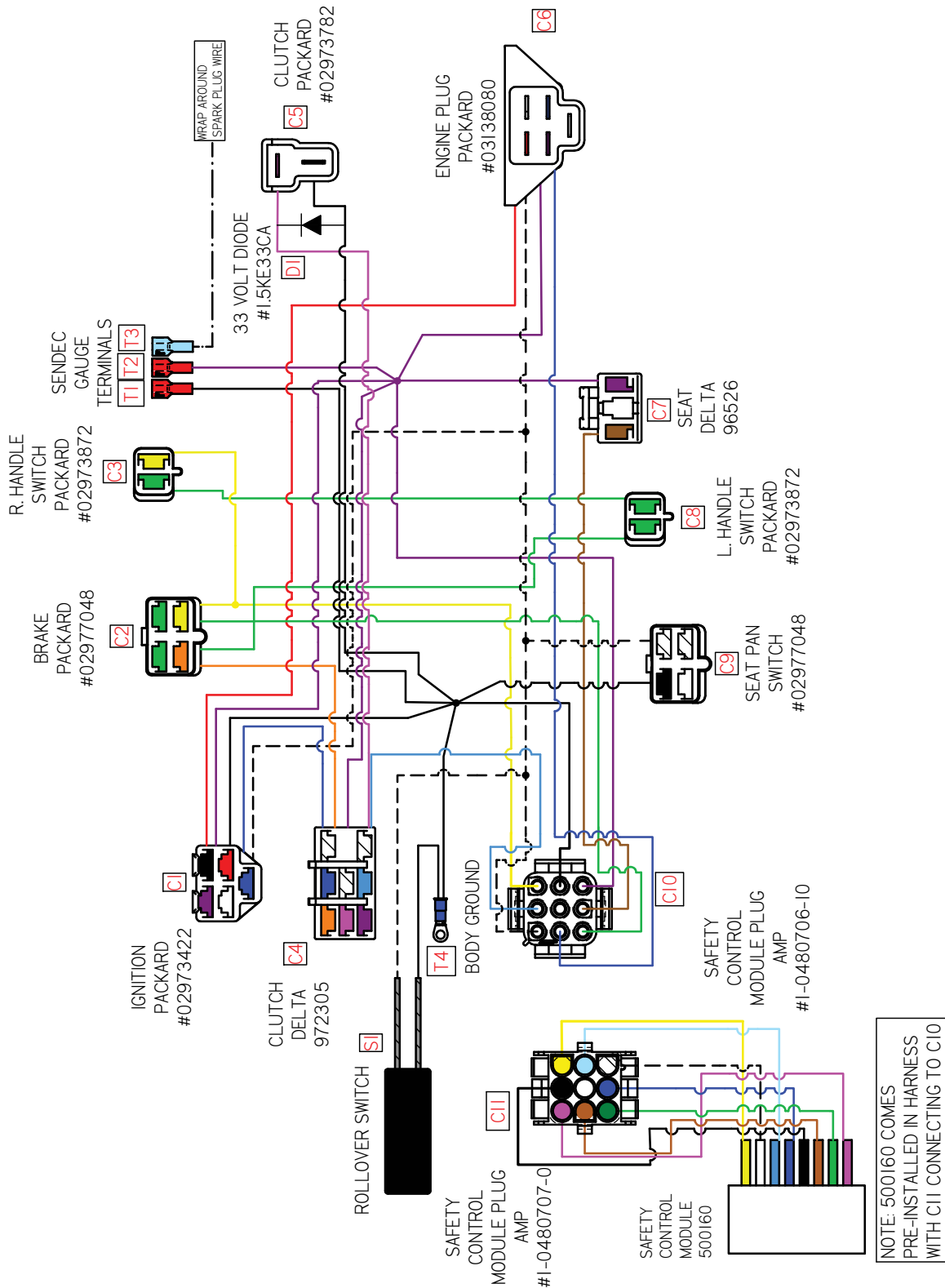
Item	Part No.	Description	Qty.
1	401122	Asm, Fuel Tank RH 4 Gal. (Incl Items 2-5)	1
2	400885	Cap, Fuel Tank, 3.5" Ratchet, 1 Way Check	2
3	600500	Valve, Rollover 1/4" Barb	2
4	600456	Grommet, Rollover Nitrile	2
5	400360	Asm, Tank Adapter 20"	2
6	401809	Asm, Fuel Tank LH 4 Gal. (Incl Items 2-5)	1
7	600398	Hose, Gas Line 1/4" EPA 15 g/m ² /24h	/IN
8	40213	Clamp, 1/4" Hose (Red)	9
9	400358	Valve, Ball Reserve	1
10	600399	Hose, Gas Line 3/16" EPA 15g/m ² /24h	/IN
11	C-125	Clamp, Spring Hose 3/16	2
12	902982	Fitting, Plastic Tee 1/4 x 1/4 On Run by 3/16	1

Fuel System -CA Models



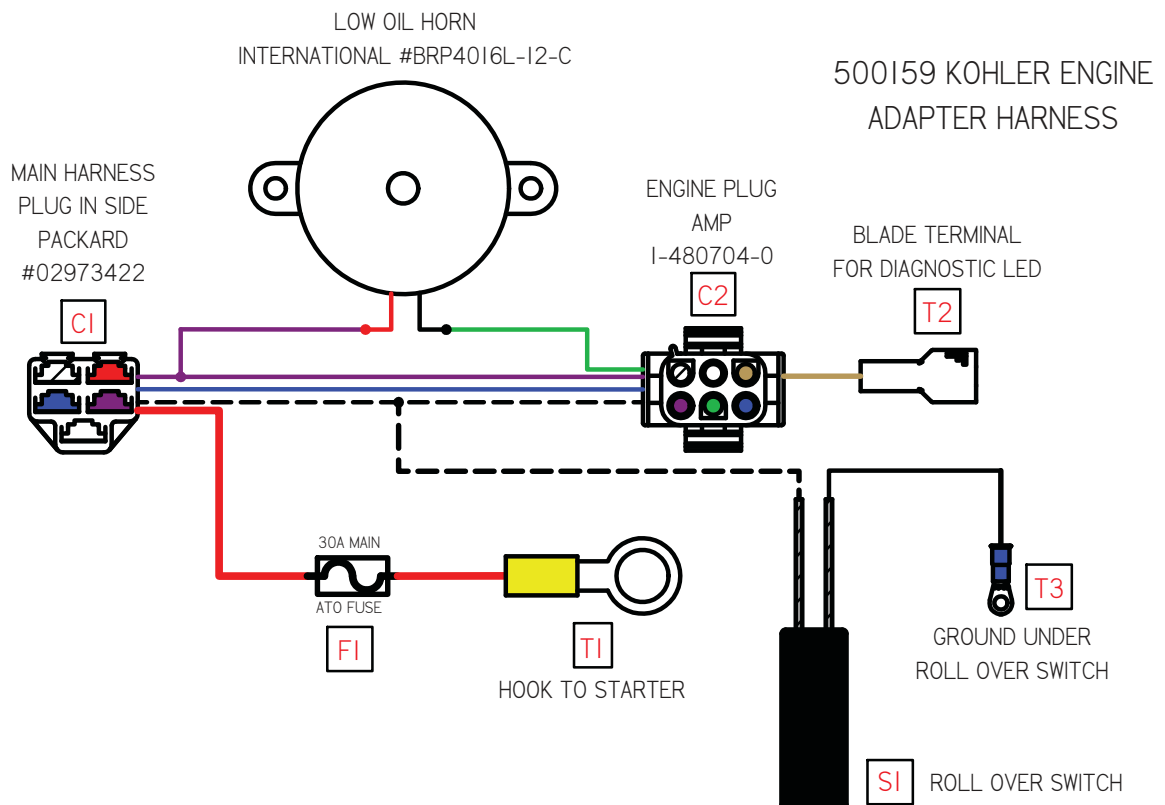
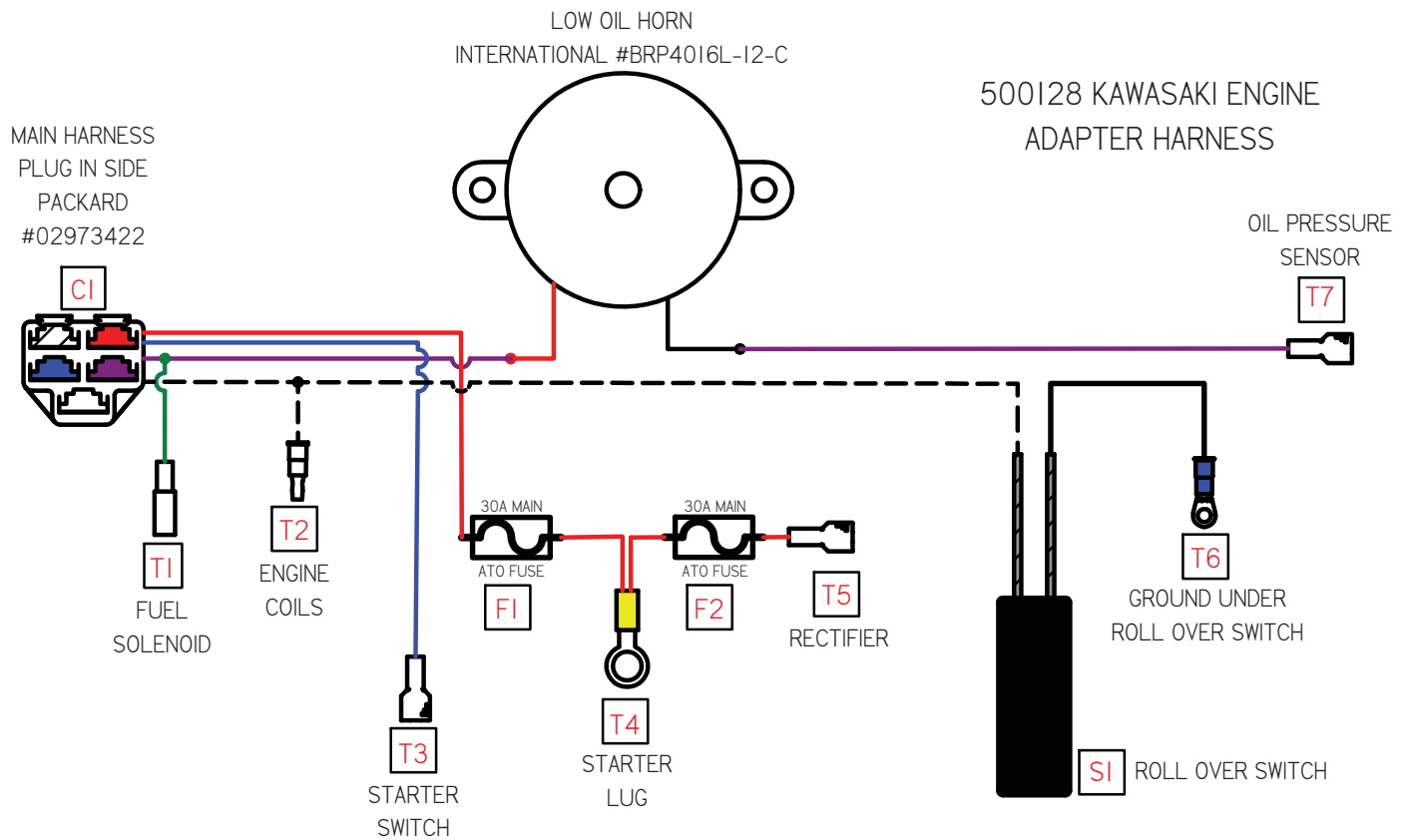
Item	Part No.	Description	Qty.
1	401122	Asm, Fuel Tank RH 4 Gal. (Incl Items 2-5)	1
2	400885	Cap, Fuel Tank, 3.5" Ratchet, 1 Way Check	2
3	600500	Valve, Rollover 1/4" Barb	2
4	600456	Grommet, Rollover Nitrile	2
5	400360	Asm, Tank Adapter 20"	2
6	401809	Asm, Fuel Tank LH 4 Gal. (Incl Items 2-5)	1
7	600398	Hose, Gas Line 1/4" EPA 15 g/m ² /24h	/IN
8	40213	Clamp, 1/4" Hose (Red)	9
9	400358	Valve, Ball Reserve	1
10	600399	Hose, Gas Line 3/16" EPA 15g/m ² /24h	/IN
11	C-125	Clamp, Spring Hose 3/16	2
12	902982	Fitting, Plastic Tee 1/4 x 1/4 On Run by 3/16	1
13	4221120	Canister, 800cc Carbon	1
14	402014	Weldment, Canister Mount Black	1
15	B-104	Bolt, 5/16-18 x 3/4" Carriage	1
16	N-217	Nut, 5/16-18 Flange Nyloc	1
17	600454	Valve, Anti-Backfire 1/4 x 3/16"	1

Wiring Diagram (Main)

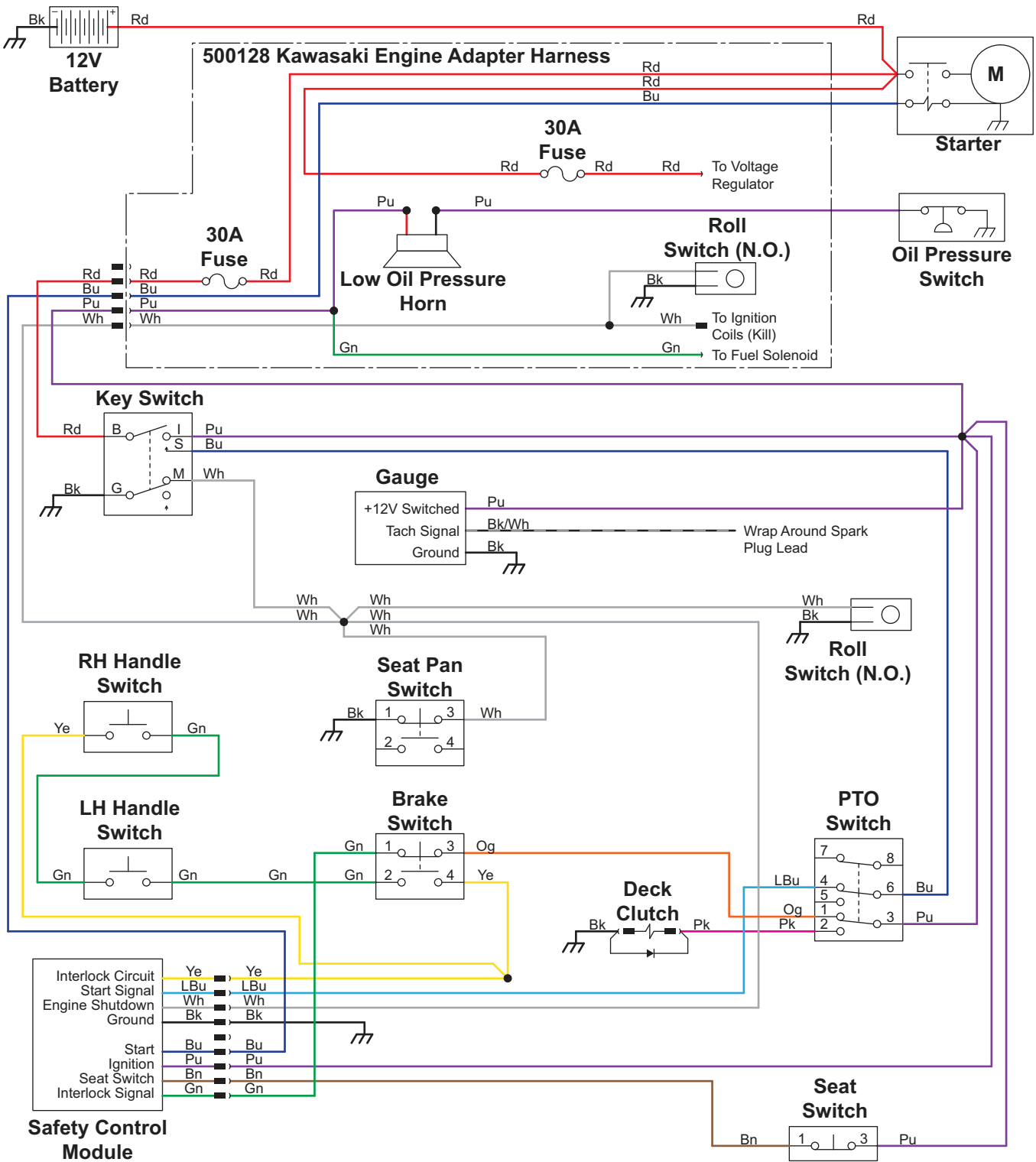


NOTE: 500160 COMES
 PRE-INSTALLED IN HARNESS
 WITH C11 CONNECTING TO C10

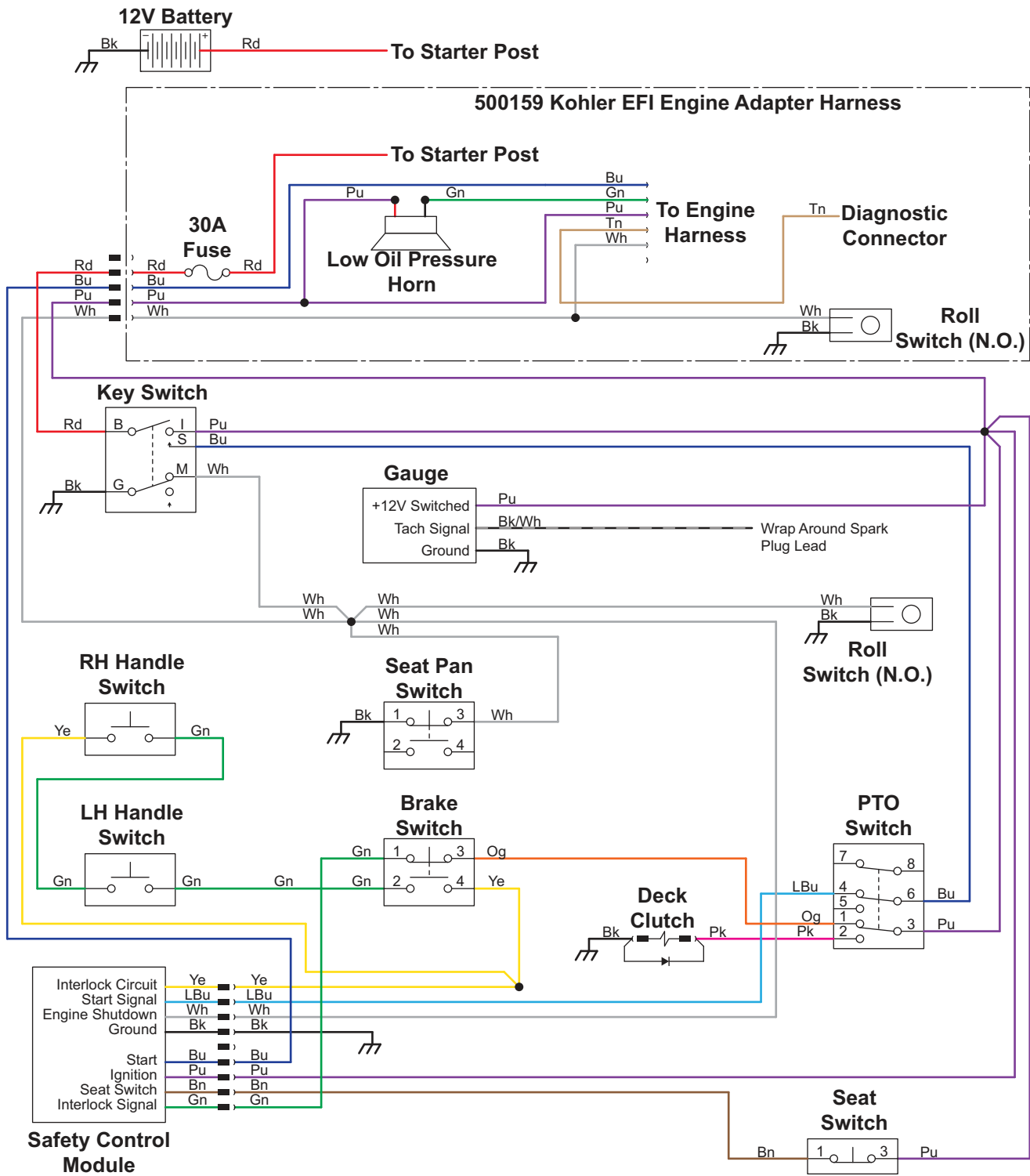
Engine Adapter Harnesses



Electrical Schematic (Kawasaki)



Electrical Schematic (Kohler)



General Bolt Torque Specifications

Bolt Size Inches	Coarse Thread /Inches	SAE 0-1-2 Low Carbon Steel	SAE Grd. 3 Medium Carbon Steel	SAE Grd. 5 Med. Carbon Heat T. Steel	SAE Grd. 6 Med. Carbon Treat Steel	SAE Grd. 7 Med. Carbon Alloy Steel	SAE 0-1-2 Med. Carbon Alloy Steel
1/4	20	6	9	10	12.5	13	14
5/16	18	12	17	19	24	25	29
3/8	16	20	30	33	43	44	47
7/16	14	32	47	54	69	71	78
1/2	13	47	69	78	106	110	119
9/16	12	69	103	114	150	154	169
5/8	11	96	145	154	209	215	230
3/4	10	155	234	257	350	360	380
7/8	9	206	372	382	550	570	600
1	8	310	551	587	825	700	840
1-1/8	7	480	794	872	1304	1325	1430
1-1/8	7	675	1105	1211	1815	1825	1975

To determine the torque for a fine thread bolt, increase the above coarse thread ratings by 9%.

Index

01653-00	22	20252	22	30227-50X	20
01681-03	22	20276	34	30227-52X	20
100042	32	300027	12	30227-62X	20
100043	8	300028	12	30240-0	14, 16, 18
100107	34	300030	12	302553	20
100169	10	300031	12	400092	36
100170	10	300032	12	400112	38
100171	10	300033	12	400201	34
100174	10	300035	12	400227	38
100200	8	300037	20	400266	38
100493	6	300039	14, 16, 18	400281	34
100976	6	300040	14, 16, 18	400339	8
100999	6	300042	12	400373	8
10203	34	300043	12	400443	32
10206	8	300044	14	400463	38
10207	8	300045	12	400464	36
10208	8	300057	18	400466	36
200027	26	300058	20	400579	38
200031	24	300059	20	400584	38
200032	6	300184	10	400937	36
200033	24, 26	300324	14, 16, 18	400938	36
200037	34	300333	16	400956	8
200112	34	300344	16	401113	36
200114	34	300345	16	40117-R	26
200115	34	300350	22	401410	8
200116	34	300356	18	401590	38
200232	34	300357	18	401830	38
200280	24, 34	300358	18	401831	38
200295	8	300359	18	401833	38
200296	8	300385	14	401860	40
200308	26	300386	14	401906	10
200358	26	300387	14	401962	40
200452	26	300441	16, 20	401973	36
2006B112R	14	300443	20	401985	40
2006B130R	16	300448	20	401986	40
2006B160R	18	300510	14, 16	401989	40
2006B64R	24	300571	18	402005	40
200709	34	30112	10	402028	32
200759	8	301372	20	402029	32
200923	24	301972	16	402037	12
200924	24	302011	18	40218	32, 36
200938	34	302012	18	40229	36
200939	34	302106	18	4174684	38
200965	34	302147	8, 14	500013	34
200967	8	302148	14	500017	38
2010B81W	10	302163	12	500018	38
2010B85W	10	30217	20	500019	32, 36
2010B92W	10	302171	12	500020	38
20214	32, 34	302172	12	500075	38
20222	24, 34	302173	12	500095	28, 30
20224	22, 32, 34	30218	20	500117	28, 30
20225	36	30219	20	500128	28
20238	34	30224	6, 10, 14, 16, 18	500129	30

Index

500136	28, 30	902548	28	B-270	6
500146	36	902669	28	B-271	6
500160	36	902794	38	B-275	12
500195	38	902926	38	B-278	14
600030	28	902949	30	B-279	28, 30
600072	38	902970	10, 14, 16, 18	B-286	12
600095	6	97122	22	B-296	14
600361	28, 30	97139	18	B-297	10
600415	28	97171	8	B-312	36
600422	28, 30	97374	26	B-322	24, 34
600436	30	97390	10	B-344	8
600442	28, 30	9907525X100S	20	B-346	38
600448	28, 30	9907675X100S	20	B-402	34
600454	42	B-102	36, 38, 40	B-424	14, 16, 18
600536	28	B-103	36, 38, 40	B-425	40
600537	30	B-105	12	C-101	36
600559	28	B-107	12, 34, 36	C-104	12
60109	26	B-108	8, 28, 30	C-105	38
60125	26	B-109	30	C-112	36
65072	26	B-110	14, 16, 18, 22, 36	C-113	36
65276	14, 16	B-117	6, 8, 10, 18, 40	C-116	12
65278	10	B-118	14, 16	DUP-100035	6
65308	18	B-121-L	20	DUP-100036	6
65308-L	16	B-122	8	DUP-100038	6
65408	5	B-124	32	DUP-300343	16
65409	5	B-129	36	DUP-300379	14
65437	5	B-131	12	DUP-301736	12
67225	20	B-135	14, 16, 18, 22	DUP-400083	36
67240	14, 16, 18	B-136	14, 16, 18	DUP-400089	32
67258	12, 22	B-137	10, 24, 36, 40	DUP-400090	32
67258-R	32	B-138	6, 8	DUP-400093	32
68122-50	22	B-140	8	DUP-400094	32
68122-50W	22	B-153	24	DUP-400095	32
68140	26	B-158	28	DUP-400096	32
68142	22	B-172	36, 40	DUP-400098	36
68225	18	B-179	22	DUP-400228	34
68280	6	B-181	6	DUP-400280	34
72012	26	B-185	14, 16, 18	DUP-400285	8
72122	22	B-190	18	DUP-400338	8
788080	20	B-199	28, 30	DUP-400438	8
800913	5	B-203	38	DUP-500193	38
900068	36	B-209	38	DUP-600554	30
900069	36	B-220	28, 30	DUP-67013	26
900070	14, 16, 18	B-221	28, 30	DUP-67014	26
900098	22	B-223	18	DUP-67015	26
900387	36	B-229	40	DUP-68130	22
900391	6, 8	B-253	16	DUP-900014	22
900410	8	B-254	16, 18	F-100	8
901277	30	B-255	14, 16, 18	F-102	20
902018	28	B-258	32, 34, 36	K-112	24
902038	28	B-264	6, 10, 14, 16	K-116	28, 30
902147	8	B-268	32	N-101	36, 38, 40
902547	28	B-269	24	N-102	38, 40

N-103	12, 36	W-111	6, 12, 14, 16
N-103-W	34, 36, 40	W-112	18
N-105	32	W-113	28, 30, 32
N-107	6, 10, 22, 28, 30, 32, 40	W-118	40
N-108	6, 8, 10, 14, 16, 24, 36, 40	W-125	32
N-109	12	W-134	24
N-110	28, 30	W-135	6, 16, 18
N-113	8	W-137	20
N-115	6, 10	W-140	6, 10, 18
N-120	12	W-144	28, 30
N-126	34	W-146	20
N-135	36	W-149	18
N-136	12	W-152	38
N-143	34	W-153	36, 38, 40
N-146	6, 8	W-158	28, 30
N-147	12	W-160	8
N-152	36	W-161	28, 30, 34
N-152S	36	W-163	28, 30
N-153	36	W-177	12
N-154	12, 24	W-179	24
N-155	22	W-181	12
N-156	8, 14, 16, 18	W-182	20
N-157	6, 8, 40	W-192	34
N-167	20	W-197	6, 8
N-173	40	W-204	34
N-176	14, 32		
N-183	8		
N-184	22		
N-190	38		
N-191	14, 16, 18		
N-204	32, 34		
N-206	8		
N-210	32, 34, 36		
N-216	18, 22, 28, 30		
N-217	12, 32		
N-218	10		
N-219	40		
N-222	14, 16, 18		
N-223	8		
N-225	34		
N-226	34		
P-101	32		
P-102	22		
P-135	12		
P-136	12		
S-108	24		
S-118	38		
W-100	20		
W-101	20		
W-102	36, 38, 40		
W-104	6, 10, 14, 16, 18, 22, 24, 28, 30, 32		
W-109	34, 40		



DIXIE CHOPPER
6302 E. County Road 100 N.
Coatesville, Indiana 46121
www.dixiechopper.com

Specifications and instructions subject to change without notice.

Dixie Chopper and Magic Circle, are registered trademarks of Magic Circle Corporation
any and all use and/or reproductions are strictly prohibited.

Printed In USA