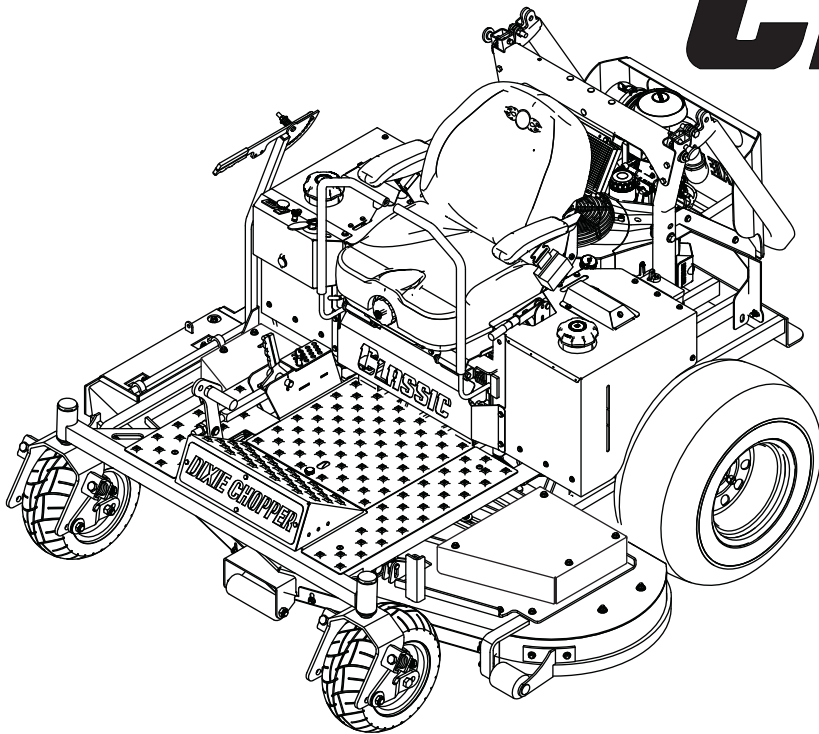




2021 Classic Parts Manual

CLASSIC



2750KW
2760KW
3360KOE
3560KW
3572KW
3572KOE

About This Manual

Congratulations on the purchase of your new Dixie Chopper mower! When operated and maintained as directed, Dixie Chopper is confident that this mower will provide you with years of excellent performance, durability, and trouble free service.

Should you ever have any questions regarding the operation, maintenance, or safety of your mower, please contact your authorized Dixie Chopper dealer who has been specially trained in the operation and service of Dixie Chopper mowers.

Please take time to record the information about your new Dixie Chopper mower in the space below for future reference. Such information may be needed when you contact your authorized Dixie Chopper dealer with questions.

Your Dixie Chopper dealer is the best source for genuine parts and accessories to keep your mower running and cutting its best. The replacement parts found within this manual are available through all authorized dealers.

Illustrations and photographs used in this manual were current as of date of print. Despite this effort, production changes may have occurred after the time of the purchase of your Dixie Chopper; therefore, your unit may vary slightly from what is depicted in this manual.

All information, illustrations, and specifications contained in this manual were in effect at the time of publication. Dixie Chopper reserves the right to change, modify, and/or discontinue specifications and/or design without notice. If there is a change that has been made to your mower which is not shown or reflected in this manual, please see your authorized Dixie Chopper dealer before operating and/or servicing equipment.

Authorized Dealer:

Model #: _____ Engine Model #: _____

Serial #: _____ Engine Serial #: _____

Date purchased: _____

Table of Contents

<i>Topic</i>	<i>Page#</i>
Quick Reference Parts	1-3
Decals.....	4-5
Belt Routing.....	6
Frame	7-8
50" and 60" Deck Lift Pivot	9-10
72" Deck Lift Pivot	11-12
Deck Lift Pedal and Deck Linkage.....	13-14
Transmission Frame	15-16
Steering Controls.....	17-18
Transmission Pumps (50/60" Decks).....	19-20
Transmission Pumps (72" Decks).....	21-22
Hydraulic Routing (50/60" Deck)	23-24
Hydraulic Routing (72" Deck)	25-26
50" Deck	27-28
60" Deck	29-30
72" Deck	31-32
Deck Spindles.....	33-34
OCDC	35-36
Kawasaki Engine	37-38
Kohler EFI Engine	39-40
Clutch Stack	41-42
50/60 in. Fenders.....	43-44
72 in. Model Fenders.....	45-46
Seat Pan.....	47-48
Roll Bar.....	49-50
Fuel System - 49 State	51
Wiring Diagram (Main).....	52
Engine Adapter Harnesses	53
Electrical Schematic (Kawasaki)	54
Electrical Schematic (Kohler)	55
General Bolt Torque Specifications	56

Quick Reference Parts

Classic with 27HP and 35HP Kawasaki Engine	2750KW	2760KW	3560KW	3572KW
Spark Plug	902453		902033	
Air Filter Primary	902497			
Air Filter Secondary	902498			
Fuel Filter	902657			
Oil Filter	902494			
Engine Oil	902873			
Drive System Oil	902873			
Drive System Filter	68140 (2 Required)			
Drive System Belt	200919			
LH Pump	200013		200313	
RH Pump	200012		200312	
LH Wheel Motor	200637		200771	
RH Wheel Motor	200638		200772	
Blade Standard X (Factory Equipped)	30227-50X	30227-60X		30227-72X
Blade Twist	30227-50T	30227-60T		30227-72T
Spindle Drive Belt	2006B112R	2006B130R		2006B160R
Engine to Deck Belt	672767	2010B88W		2010B89W
3-3/4" Anti-Scalp Roller	67240			
7-1/2" Anti-Scalp Roller	30240-0			
O.C.D.C. Complete	68122-50	300350		72122
Complete Spindle Assembly (Short)	300441			
Complete Spindle Assembly (Long)	300442			
Seat	401962		402006	
Fuel Cap	400885			
Throttle Cable Assembly	401590			
Choke Cable Assembly	600072			
Front Tire Assembly	Tire - 400234 Rim - 401402 Bearing Kit - 900339 Assembly 400439			
Rear Tire Assembly	Tire - 400744 Rim - 400745 Assembly 400743		Tire - 400747 Rim - 401212 Assembly 401745	

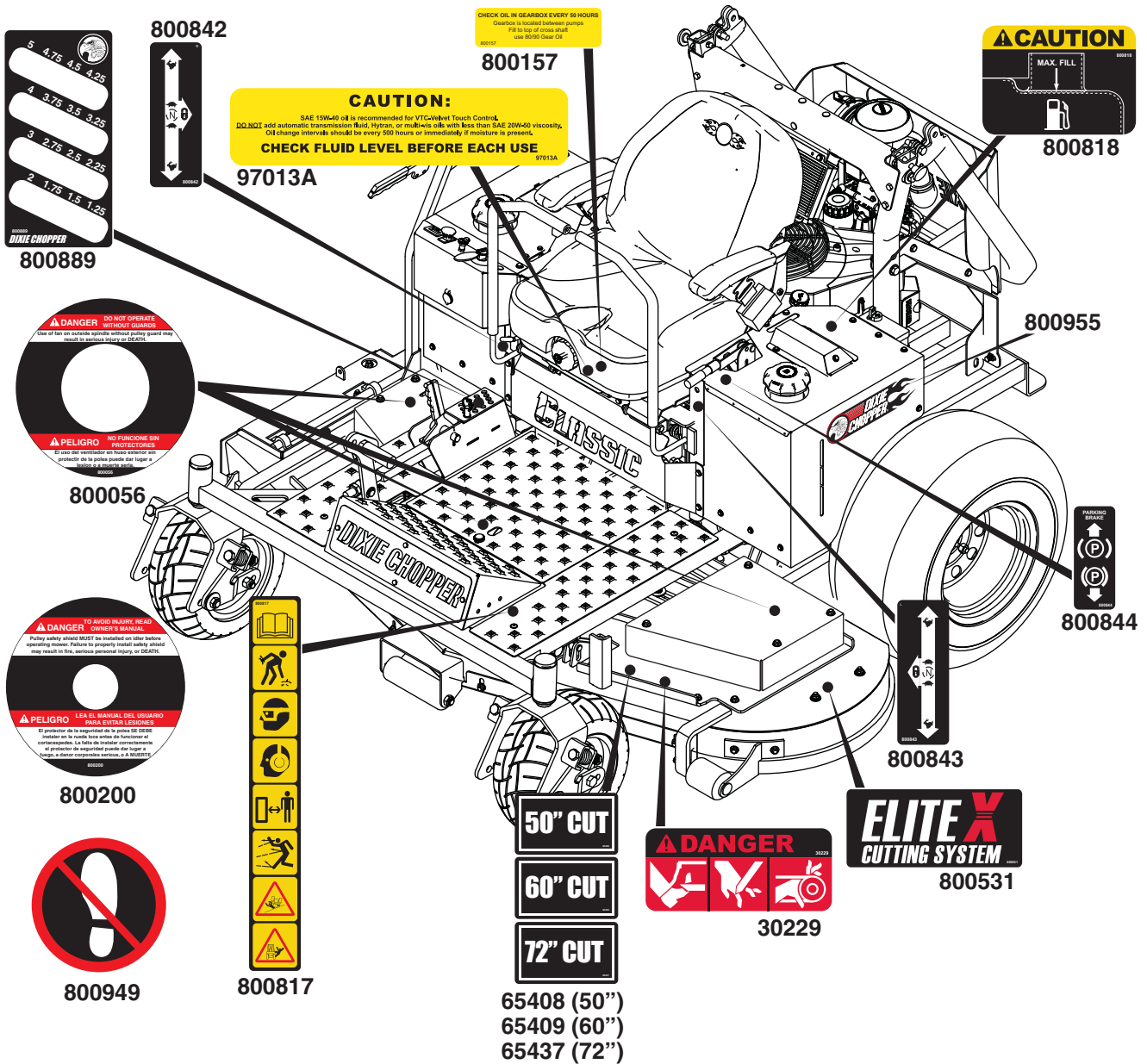
Quick Reference Parts

Classic with 33HP or 35HP Kohler EFI Engine	3360EFI		3572EFI	
Spark Plug	902521			
Pre-Filter (Air)	901392			
Air Filter Primary	901395			
Fuel Filter	901246			
Oil Filter	901513			
Engine Oil	902873			
Drive System Oil	902873			
Drive System Filter	68140	200598		
Drive System Belt	200919			
LH Pump	200013	200313		
RH Pump	200012	200312		
LH Wheel Motor	200637	200771		
RH Wheel Motor	200638	200772		
Blade Standard X (Factory Equipped)	30227-60X	30227-72X		
Blade Twist	30227-60T	30227-72T		
Spindle Drive Belt	2006B130R	2006B160R		
Engine to Deck Belt	2010B88W	2010B89W		
3-3/4" Anti-Scalp Roller	67240			
7-1/2" Anti-Scalp Roller	30240-0			
O.C.D.C.	300350	72122		
Complete Spindle Assembly (Short)	300441			
Complete Spindle Assembly (Long)	300442			
Seat	401962	402006		
Fuel Cap	400885			
Charcoal Canister	N/A	4221120	N/A	4221120
Throttle Cable Assembly	401590			
Choke Cable Assembly	N/A			
Front Tire Assembly	Tire - 400234 Rim - 401402 Bearing Kit - 900339 Assembly 400439			
Rear Tire Assembly	Tire - 400744 Rim - 400745 Assembly 400743	Tire - 400747 Rim - 401212 Assembly 401745		

Quick Reference Parts

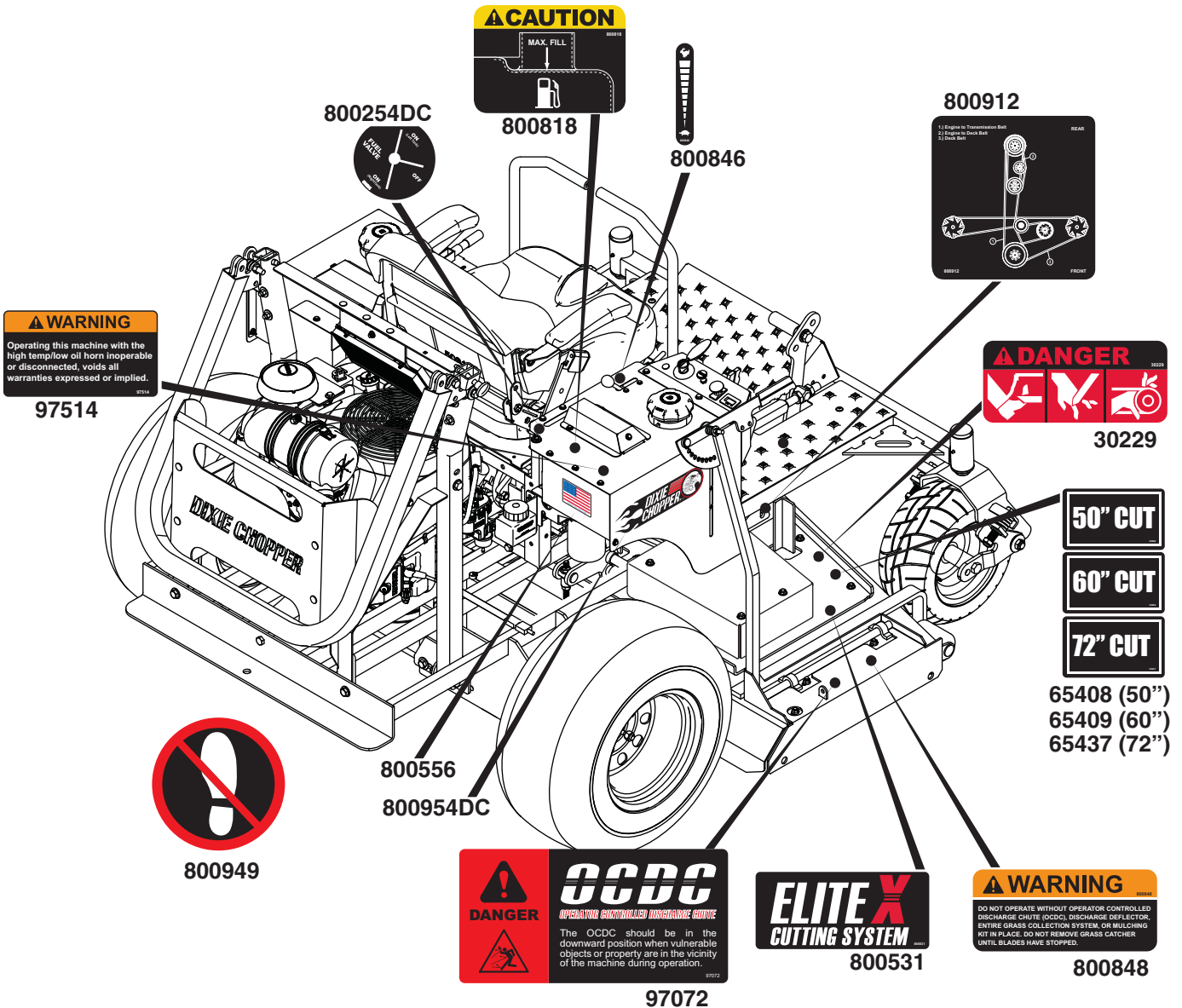
This page intentionally left blank

Decals



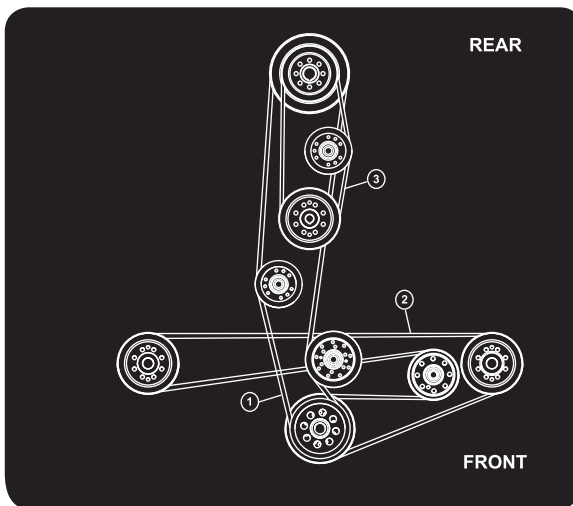
Part No.	Description
800925	Decal Kit
65408	Decal, 50" Cut
65409	Decal, 60" Cut
65437	Decal, 72" Cut

Decals

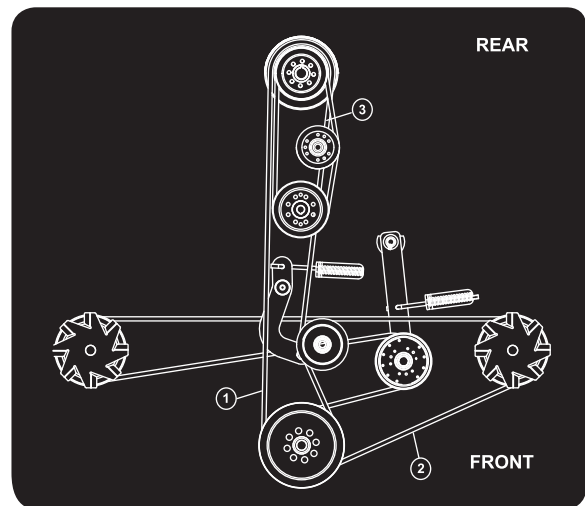


Belt Routing

50 inch deck

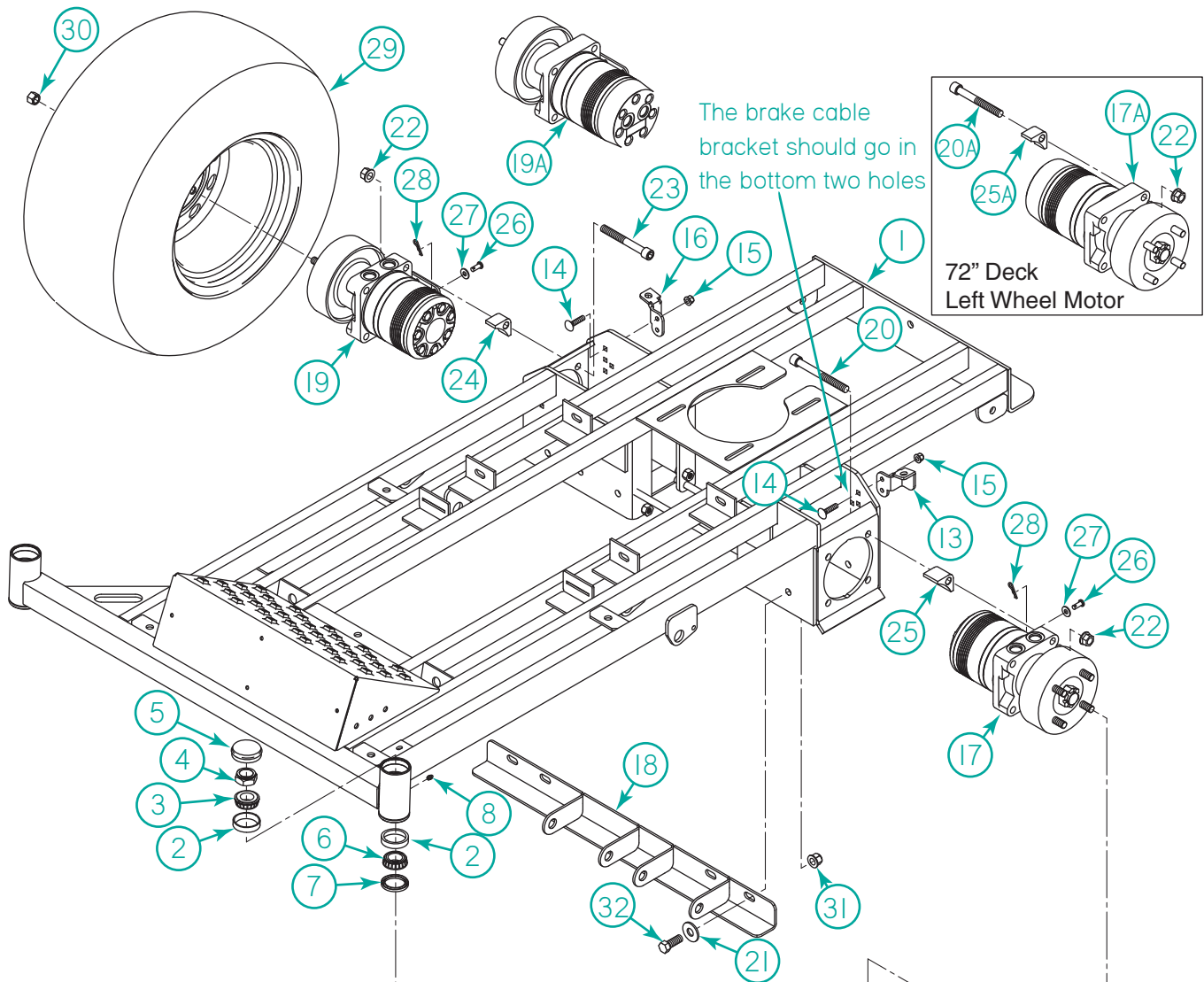


60/72 inch deck

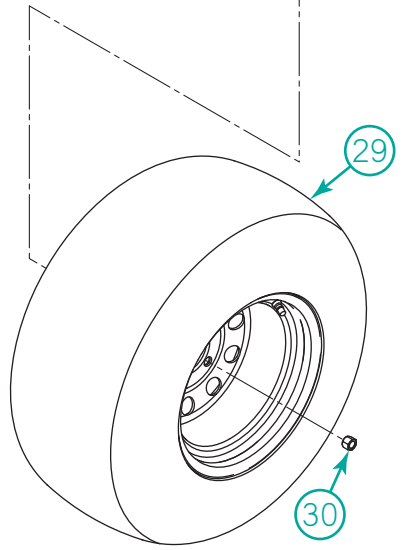
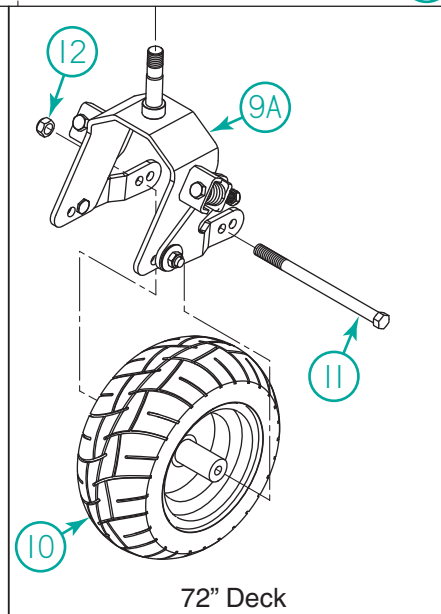
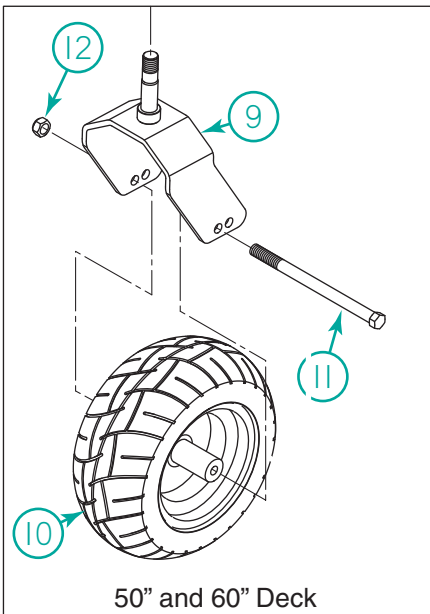
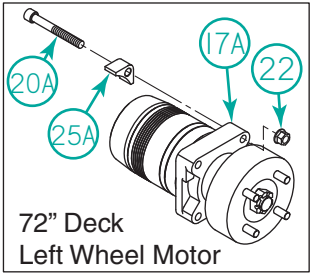


Item	Part No.	Description	Qty.
1	672767	Belt, Engine to Deck (50" Deck)	1
1A	2010B88W	Belt, Engine to Deck (60" Deck)	1
1B	2010B89W	Belt, Engine to Deck (72" Deck)	1
2	2006B112R	Belt, Deck Spindle (50" Deck)	1
2A	2006B130R	Belt, Deck Spindle (60" Deck)	1
2B	2006B160R	Belt, Deck Spindle (72" Deck)	1
3	200919	Belt, Drive System	1

Frame



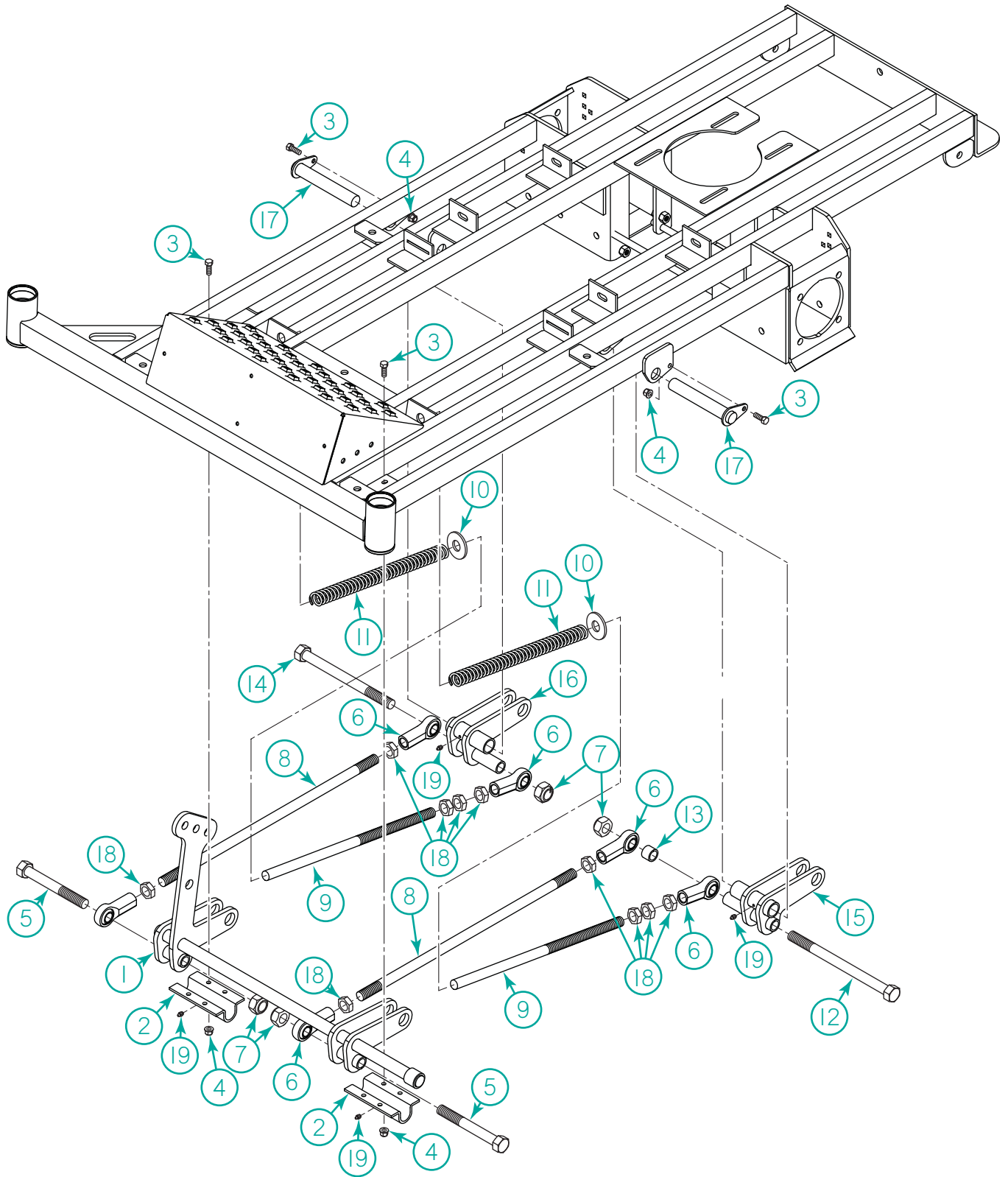
The brake cable bracket should go in the bottom two holes



Frame

Item	Part No.	Description	Qty.
1	101006	Weldment, Frame Black (50/60" Deck)	1
1A	101009	Weldment, Frame Black (72" Deck)	1
2	10206DC	Bearing, Race Front Fork	4
3	10207	Bearing, Upper Front Fork	2
4	N-183	Nut, 1-14 Nyloc Jam	2
5	401410	Cap, Dust Front Fork	2
6	97171	Bearing, Bottom	2
7	10208DC	Seal, Front Fork	2
8	F-100	Fitting, 3/16 Drive-In Grease	2
9	100397	Weld, Front Fork Two Hole Black (50/60" Deck)	2
9A	100964	Assembly, FF Springer Cantilever HD (72" Deck)	2
10	400439	Assembly, Wheel Front	2
10A	400234	Tire	2
10B	401402	Rim	2
10C	900339	Bearing Kit	2
11	B-235	Bolt, 5/8-11 x 9" HHCS PT Gr. 5 PT Zinc	2
12	N-115	Nut, 5/8-11 Nyloc Gr. A Zinc	2
13	100595	Bracket, Cable Brake LH Black	1
14	B-259	Bolt, 5/16-18 Carriage	4
15	N-217	Nut, 5/16-18 Flange Nyloc	4
16	100594	Bracket, Cable Brake RH Black	1
17	200637	Motor, DG280 LH (50/60" Deck)	1
17A	200771	Motor, DG335 LH Axial (72" Deck)	1
18	401756	Weld Stabilizer Support Black (50/60" Deck)	1
18A	100760	Weldment, Crossmember (72" Deck)	1
19	200638	Motor, DG280 RH (50/60" Deck)	1
19A	200772	Motor, DG335 RH (72" Deck)	1
20	B-380	Bolt, 1/2-13 x 4" SHCS (50/60" Deck)	4
20A	B-344	Bolt, 1/2-13 x 3-1/2" SHCS (72" Deck)	4
21	W-109	Washer, 1/2" Flat	4
22	N-223	Nut, 1/2-13 Flange Top Lock	8
23	B-344	Bolt, 1/2-13 x 3-1/2" SHCS	4
24	200758	Spacer, Wheel Motor.53 ID x 1" Long	4
25	200756	Spacer, Wheel Motor.53 ID x 1-1/2" Long (50/60" Deck)	4
25A	200758	Spacer, Wheel Motor.53 ID x 1" Long (72" Deck)	4
26	P-112	Pin, 5/16 x 3/4 Clevis	2
27	W-102	Washer, 1/4 Flat	2
28	20224DC	Clip, Hair Pin #13	2
29	400743	Complete Rear Wheel 25 x 9-12 (Includes 29B and 29C) (50" Deck)	2
29A	401745	Complete Rear Wheel 25 x 12-12 (Includes 29D and 29E) (60/72" Deck)	2
29B	400744	Tire, 25 x 9-12 Turf Tread (50" Deck)	2
29C	400745	Rim, 12 x 7, +.75" Offset (50" Deck)	2
29D	400747	Tire, 25 x 12-12 Grass Master (60/72" Deck)	2
29E	401212	Rim, 12 x 10.5 (60/72" Deck)	2
30	N-113	Nut, 1/2-20 Wheel Lug	8
31	N-218	Nut, 1/2-13 Flange Nyloc	4
32	B-117	Bolt, 1/2-13 x 1-1/4" HHCS Gr. 5 Zinc	4

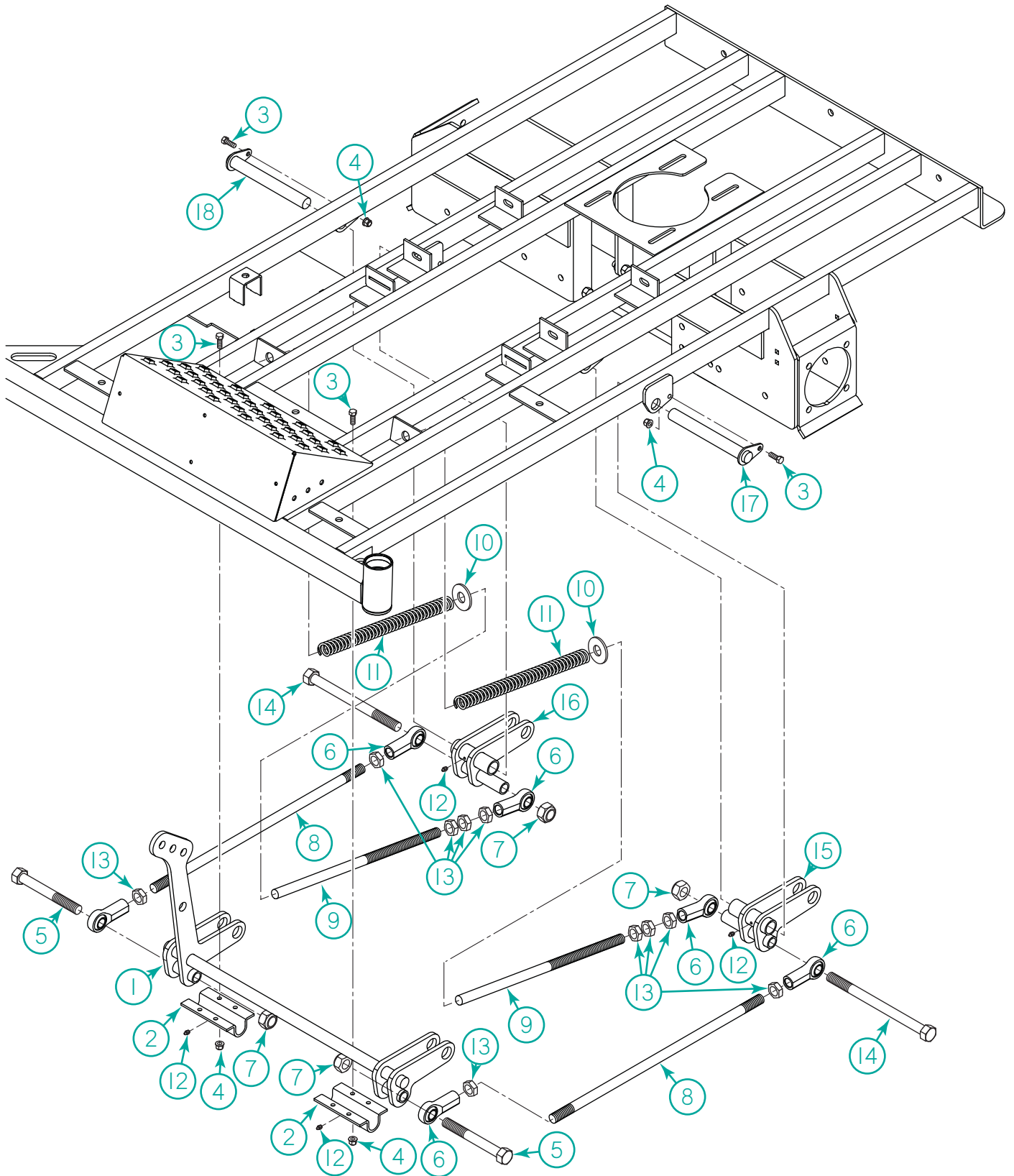
50" and 60" Deck Lift Pivot



50" and 60" Deck Lift Pivot

Item	Part No.	Description	Qty.
1	302311	Weldment, Front Deck Lift Cross Shaft (50/60" Decks)	1
2	302313	Bracket, Cross Shaft Saddle	2
3	B-107	Bolt, 5/16-18 x 3/4" HHCS FT Gr. 5 Clear Zinc	10
4	N-217	Nut, 5/16-18 Flange Nyloc	10
5	B-351	Bolt, 3/4-10 x 5" HHCS PT Gr. 5 Clear Zinc	2
6	301389	Rod End, 3/4-16 Female Thread Hyme Clear Zinc	6
7	N-197	Nut, 3/4-10 Nyloc Jam Gr. A Clear Zinc	4
8	301753	Rod, Deck Lift Link, Clear Zinc	2
9	301742	Rod, Deck Lift Spring Mount Clear Zinc	2
10	W-154	Washer, 3/4 Flat	2
11	301929DC	Spring, Compression Clear Zinc	2
12	B-238	Bolt, 3/4-10 x 8-1/2" HHCS PT Gr. 2 Clear Zinc	1
13	302320	Tube, Deck Link Spacer	1
14	B-237	Bolt, 3/4-10 x 7-1/2" HHCS PT Gr. 2 Clear Zinc	1
15	302319	Weld, Rear Deck Lift LH Clear Zinc	1
16	302318	Weld, Rear Deck Lift RH Clear Zinc	1
17	100897	Weld, Deck Lift Pin Clear Zinc	2
18	N-114	Nut, 3/4-16 Jam Gr. 2 Clear Zinc	10
19	F-109	Fitting - 3/16 x .1 Drive In. Grease, Clear Zinc	4

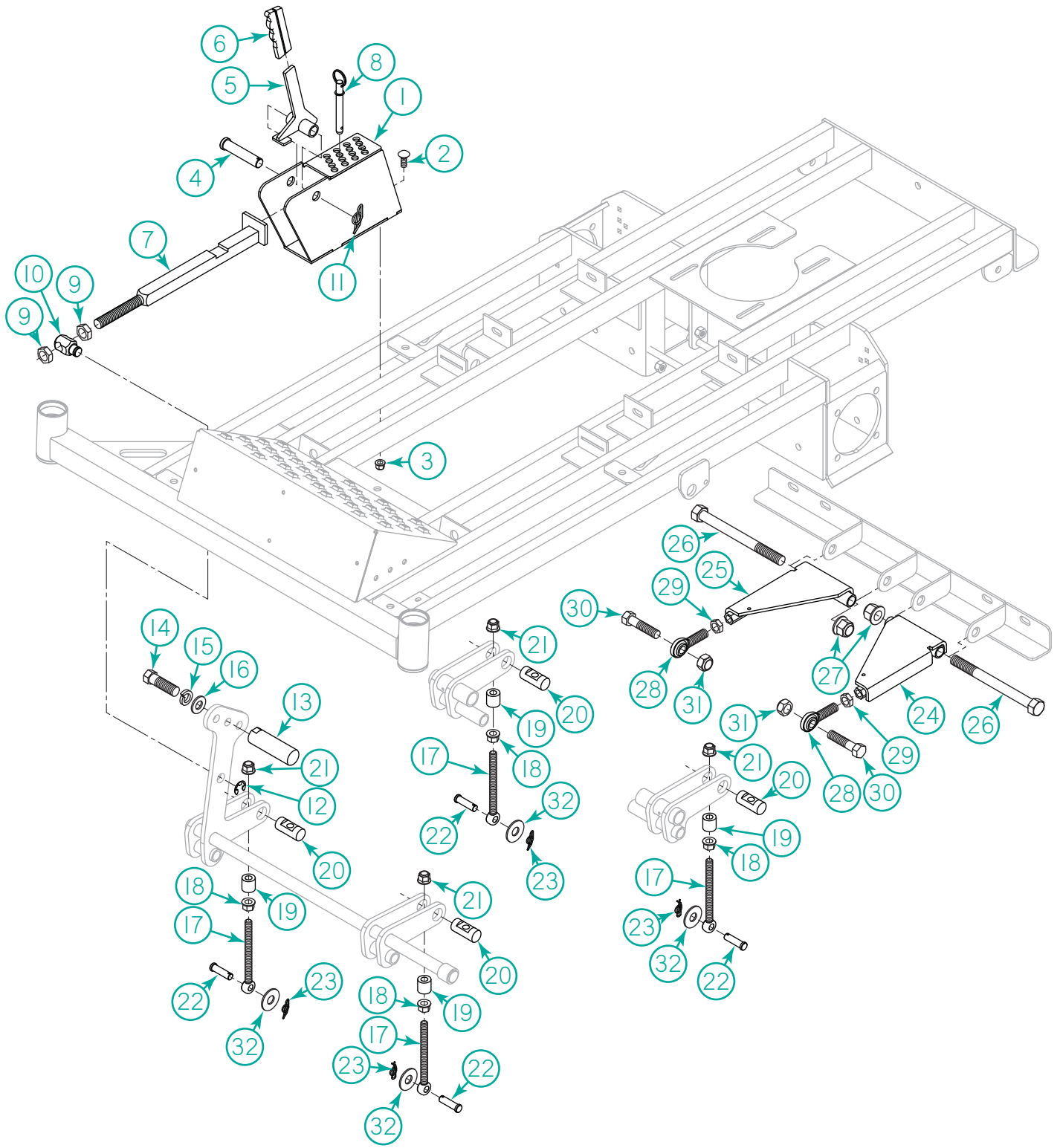
72" Deck Lift Pivot



72" Deck Lift Pivot

Item	Part No.	Description	Qty.
1	302346	Weldment, Front Deck Lift Cross Shaft (72" Deck)	1
2	302313	Bracket, Cross Shaft Saddle	2
3	B-107	Bolt, 5/16-18 x 3/4" HHCS FT Gr. 5 Clear Zinc	10
4	N-217	Nut, 5/16-18 Flange Nyloc	10
5	B-351	Bolt, 3/4-10 x 5" HHCS PT Gr. 5 Clear Zinc	2
6	301389	Rod End, 3/4-16 Female Thread Hyme Clear Zinc	6
7	N-197	Nut, 3/4-10 Nyloc Jam Gr. A Clear Zinc	4
8	301753	Rod, Deck Lift Link, Clear Zinc	2
9	301742	Rod, Deck Lift Spring Mount Clear Zinc	2
10	W-154	Washer, 3/4 Flat	2
11	301929DC	Spring, Compression Clear Zinc	2
12	F-109	Fitting - 3/16 x .1 Drive In. Grease, Clear Zinc	4
13	N-114	Nut, 3/4-16 Jam Gr. 2 Clear Zinc	10
14	B-237	Bolt, 3/4-10 x 7-1/2" HHCS PT Gr. 2 Clear Zinc	2
15	302319	Weld, Rear Deck Lift LH Clear Zinc	1
16	302318	Weld, Rear Deck Lift RH Clear Zinc	1
17	100898	Weld, Deck Lift Pin, Clear Zinc	1
18	100876	Weld, Rear Deck Lift Pin, Clear Zinc	1

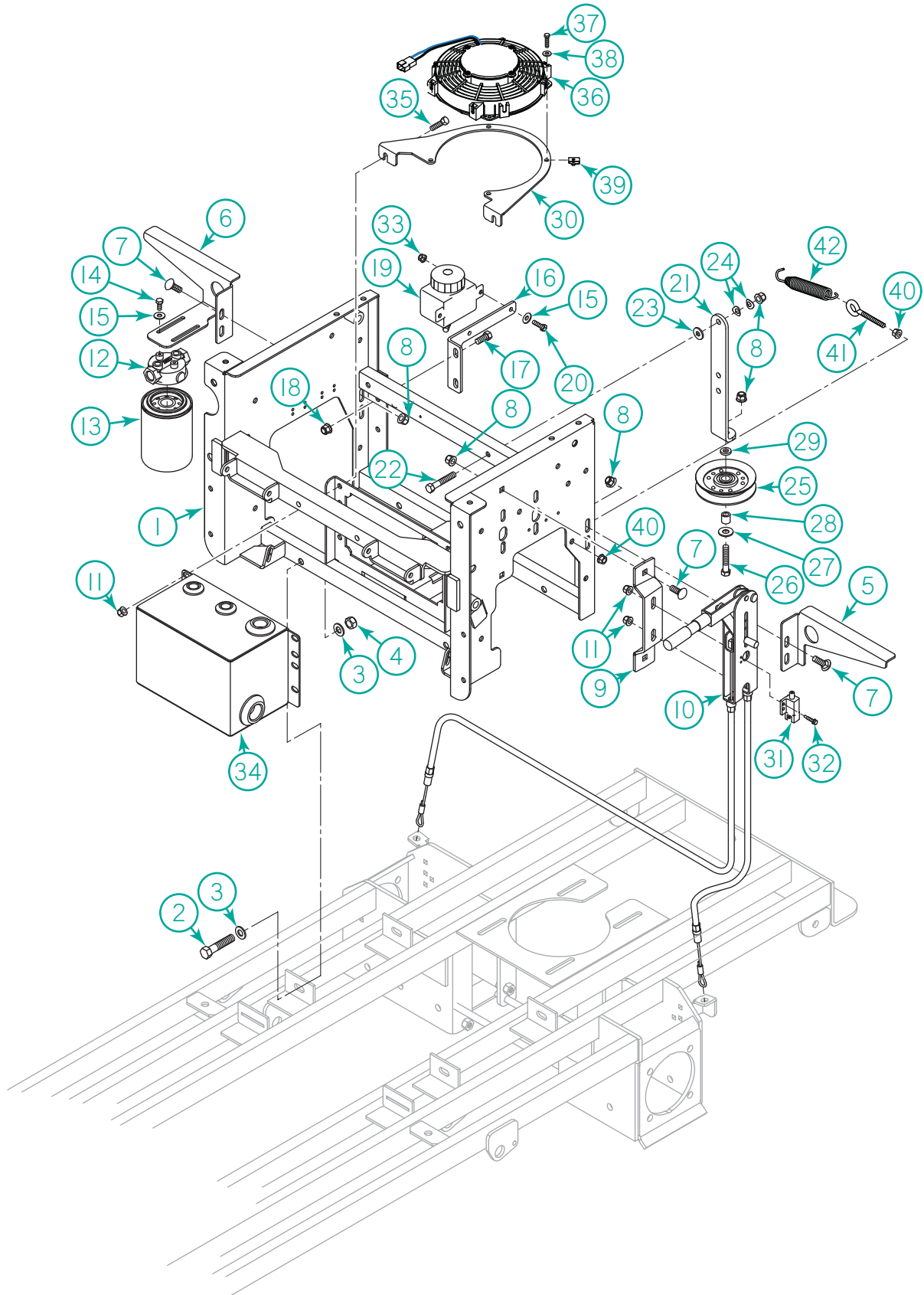
Deck Lift Pedal and Deck Linkage



Deck Lift Pedal and Deck Linkage

Item	Part No.	Description	Qty.
1	100924DC	Weld, Deck Height Indicator	1
2	B-135	Bolt, 3/8-16 x 3/4" Carriage	2
3	N-216	Nut, 3/8-16 Flange Nyloc	2
4	P-165	Pin, 3/4 x 3-1/4" Clevis Clear Zinc	1
5	301951	Weld, Deck Lift Handle	1
6	67258	Grip, 1/4 x 1 Black	1
7	301757	Weld, Deck Lift Selector Rod Clear Zinc	1
8	P-174	Pin, 1/2 x 3" Shoulder Style Quick Release	1
9	N-114	Nut, 3/4-16 Jam Gr. 2 Clear Zinc	2
10	300031	Trunnion, 3/4-10 x 1-1/8"	1
11	C-133	Clip-3/4x2-1/4 Locking Cotter, Clear Zinc	1
12	C-116	Clip, E 3/4" I.D.	1
13	301736	Rod, Foot Pedal Clear Zinc	1
14	B-275	Bolt, 5/8-18 x 2" HHCS Gr. 5 Clear Zinc	1
15	W-111	Washer, 5/8 Lock	1
16	W-181	Washer, 5/8 Flat	1
17	B-388	Rod End, 1/2-13 x 6" FT Clear Zinc	4
18	N-157	Nut, 1/2-13 Whizlock Flange	4
19	301931DC	Tube, Deck Adjustment Spacer Clear Zinc (72" Deck Only)	4
20	301740	Rod, Deck Lift Mount Bushing	4
21	N-218	Nut, 1/2-13 Flange Nyloc	4
22	P-167	Pin, 1/2 x 1-3/4 Clevis	4
23	C-131	Clip, 1/2" Shaft Locking Hairpin Clear Zinc	4
24	300039	Stabilizer, LH Deck (Incl 28 and 29)	1
25	300040	Stabilizer, RH Deck (Incl 28 and 29)	1
26	B-424	Bolt, 3/4-10 x 7" HHCS PT Gr. 5 Clear Zinc	2
27	N-222	Nut, 3/4-10 Flange Nyloc	2
28	900070	Joint, 5/8-18 x 1-3/4 Hyme Spherical	2
29	N-191	Nut, 5/8-18 Jam Gr. 2 Clear Zinc	2
30	B-185	Bolt, 5/8-11 x 2" HHCS PT Gr. 5 Clear Zinc	2
31	N-156	Nut, 5/8-11 Nyloc Jam Clear Zinc	2
32	W-166	Washer-7/16 Flat, Clear Zinc	1

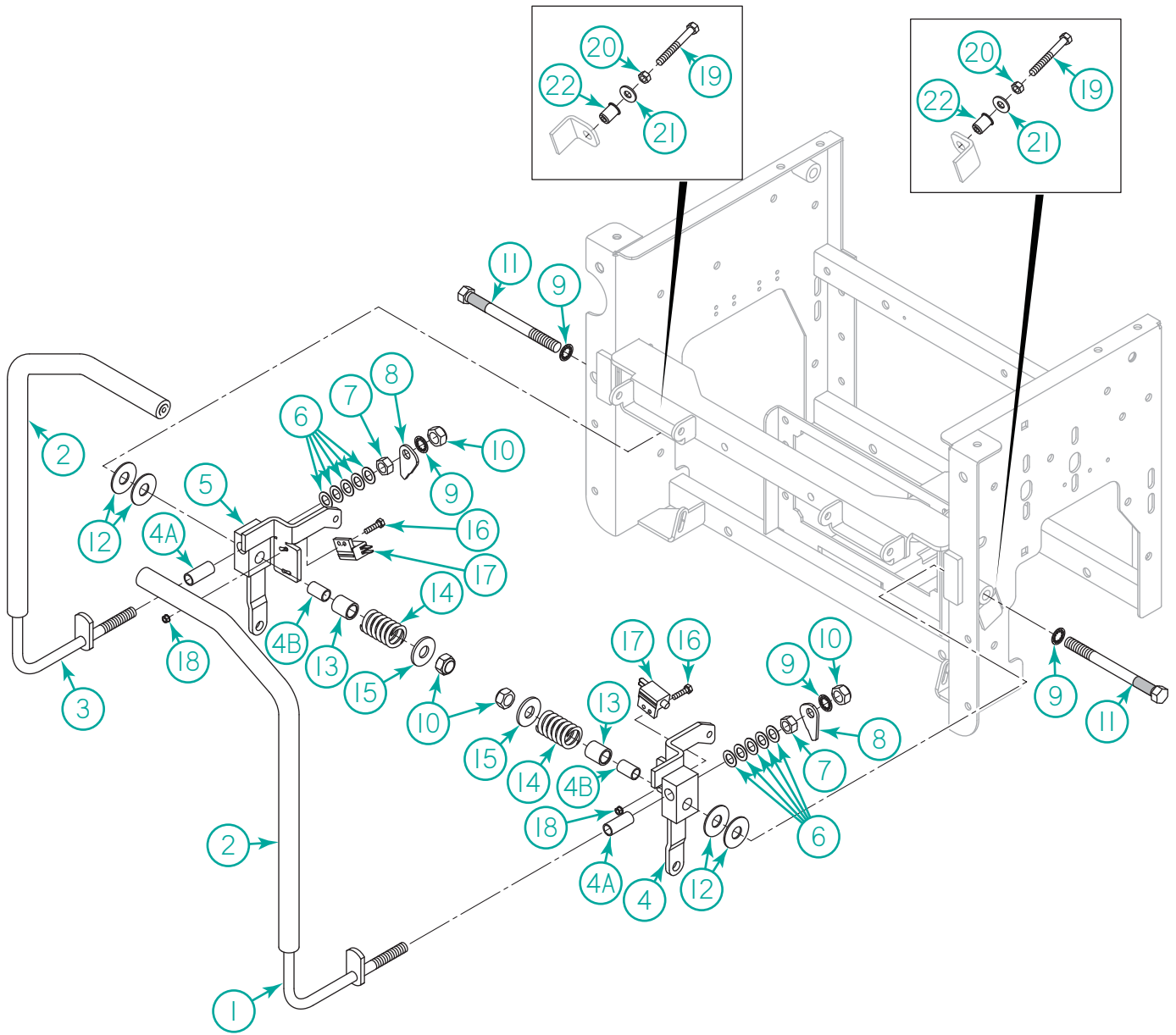
Transmission Frame



Transmission Frame

Item	Part No.	Description	Qty.
1	100285	Weldment, Sheet Metal Transmission Frame	1
2	B-199	Bolt, 7/16-20 x 2" HHCS PT Gr. 8 Yellow Zinc	4
3	W-168	Washer, 7/16 Flat	8
4	N-135	Nut, 7/16-20 Nyloc Gr. A Clear Zinc	4
5	100279	Bracket, Tank Support LH	1
6	100566	Bracket, Fender Brace Filter Mount RH	1
7	B-110	Bolt, 3/8-16 x 3/4" Carriage	6
8	N-216	Nut, 3/8-16 Flange Nyloc	10
9	401743	Bracket, Brake Spacer Black	1
10	400349DC	Assembly, Lever/Cable Brake	1
11	N-217	Nut, 5/16-18 Flange Nyloc	6
12	200597	Head, Filter Zinga	1
13	200598	Filter, 25 Micron	1
14	B-101	Bolt, 1/4-20 x 1/2" HHCS FT Gr. 5 Clear Zinc	2
15	W-102	Washer, 1/4 Flat	2
16	200891	Bracket, Mount Overflow Tank Black	1
17	B-108	Bolt, 3/8-16 x 1" HHCS FT Gr. 5 Clear Zinc	2
18	W-153	Washer, 1/4 Flat	2
19	200234	Tank, Overflow w/ cap	1
20	B-102	Bolt, 1/4-20 x 3/4" HHCS FT Gr. 5 Clear Zinc	2
21	100288DC	Bracket, Idler Arm 110L	1
22	B-165	Bolt, 3/8-16 x 2" HHCS PT Gr. 5 Clear Zinc	1
23	W-125	Washer, 3/8 x 7/8" Nylon	1
24	W-126	Washer, 3/8 Dish Spring	2
25	30234DC	Pulley, V-Idler	1
26	B-124	Bolt, 3/8-16 x 1-3/4" HHCS PT Gr. 5 Clear Zinc	1
27	W-104	Washer, 3/8 Flat	1
28	97415DC	Spacer, 3/8 ID x 5/8 OD x 5/8" L	1
29	W-124	Washer, 3/8 Machine	1
30	200042DC	Mount, Electric Fan (72" Deck)	1
31	500019	Switch, Brake	1
32	S-128	Screw, #10-16 x 3/4" Self Tapping Whizlock	2
33	N-102	Nut, 1/4-20 Whizlock Flange	2
34	200624	Weldment, Hydraulic Tank No Filter	1
35	B-131	Bolt, 5/16-18 x 1" HHCS FT Gr. 5 Clear Zinc	4
36	200043	Fan, 7.5 Electric (72" Models)	1
37	B-203	Bolt, #10-24 x 3/4" HHCS FT SS (72" Models)	4
38	W-152	Washer, #10 Flat SS (72" Models)	4
39	C-105	Clip, #10-24 Nut (72" Models)	4
40	N-103-W	Nut-5/16-18 Flange Whiz Gr.5, Clear Zinc	1
41	B-150A	Bolt - 5/16-18x2-1/2 Eye Gr.2, Clear Zinc	1
42	300324	Spring - Ext., 21.463 lb/in, 0.895" OD, 6" FLIH, 1S, Clear Zinc	1

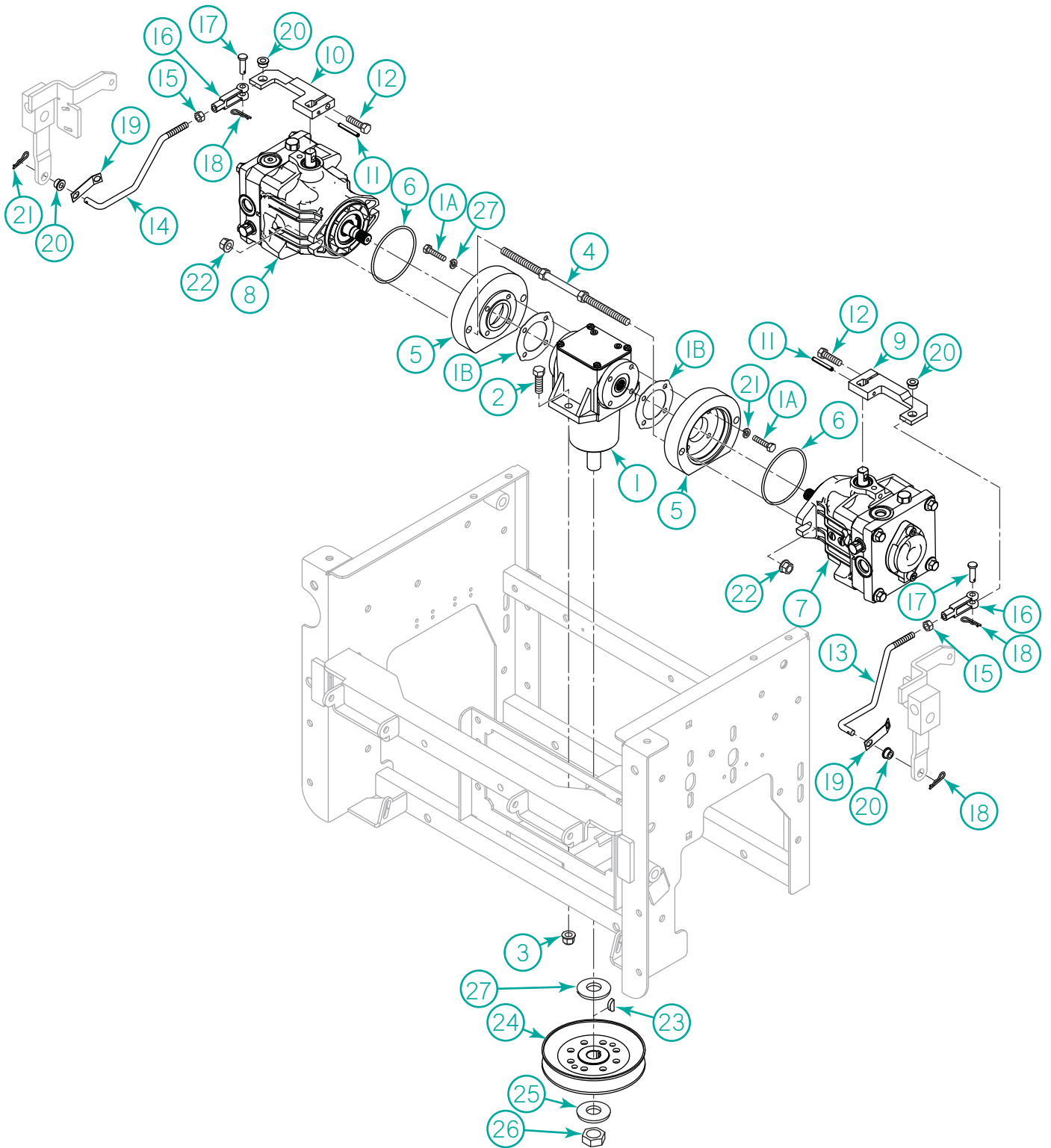
Steering Controls



Steering Controls

Item	Part No.	Description	Qty.
1	400497	Lever, LH Steering	1
2	400201	Grip, Foam	2
3	400496	Lever, RH Steering	1
4	200331	Block, Steering Long LH (Incl 4A and 4B)	1
4A	20276	Bushing, 1/2 x 5/8 x 1-1/2" Bronze	2
4B	20238	Bushing, 1/2 x 5/8 x 1" Bronze	2
5	200330	Block, Steering Long RH (Incl 4A and 4B)	1
6	W-110	Washer, 1/2 Machine	10
7	N-198	Nut, 1/2-13 Two Way Lock Gr. 2 Clear Zinc	2
8	200247	Actuator, Steering Switch	2
9	W-157	Washer, 1/2 Star Tooth	4
10	N-143	Nut, 1/2-13 Nyloc Gr. A Clear Zinc	4
11	B-402	Bolt, 1/2-13 x 5" HHCS PT Gr. 5 Zinc Knurled	2
12	W-140	Washer, 5/8 ID x 1-5/8" OD Nylon	4
13	10203	Spacer	2
14	100107DC	Spring, Suspension	2
15	W-109	Washer, 1/2 Flat	2
16	B-258	Bolt, M5-0.8 x 16 mm HHCS FT 8.8 Clear Zinc	4
17	500013	Switch, Steering Arm	2
18	N-210	Nut, M5-0.8 Hex w/ Star Washer	4
19	B-129	Bolt, 5/16-18 x 2-1/4" HHCS FT Gr. 2 Clear Zinc	2
20	N-103	Nut, 5/16-18 HHCS Gr. 2 Clear Zinc	2
21	W-113	Washer, 5/16 Flat	2
22	N-153	Nut, 5/16-18 Insert	2

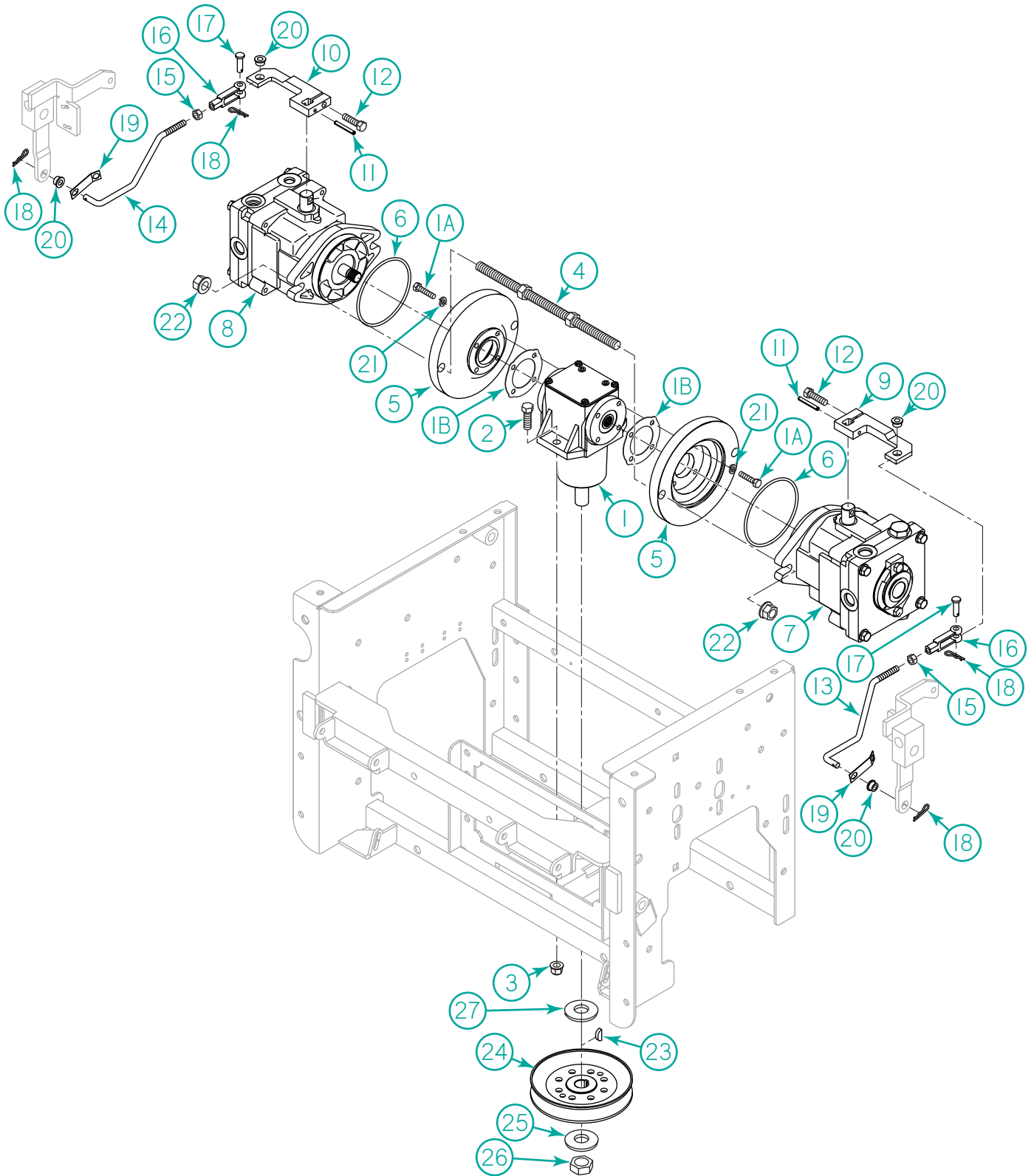
Transmission Pumps (50/60" Decks)



Transmission Pumps (50/60" Decks)

Item	Part No.	Description	Qty.
1	200107	Kit, Gear Box	1
1A	792026	Screw, Gear Box	8
1B	788030B	Gasket, T-Box	2
1C	788101	Gasket, Gear Box Cover	1
1D	772150	Cover, Gear Box	1
1E	792025	Screw, #10-24 x 1/2"	4
2	B-109	Bolt, 3/8-16 x 1-1/4" HHCS FT Gr. 5 Clear Zinc	2
3	N-216	Nut, 3/8-16 Flange Nyloc	2
4	65206	Stud Assembly, 3/8-24 x 8" (Incl 4A and 4B)	2
4A	N-184	Nut, 3/8-24 Hex	2
5	200003	Bell Housing, Gear Pump Flange	2
6	4421221	O-Ring, 4-1/4"	2
7	200013DC	Pump, Hydro-Gear 16CC LH	1
8	200012DC	Pump, Hydro Gear 16CC RH	1
9	200315	Arm, Control Pump LH	1
10	200314	Arm, Control Pump RH	1
11	P-118	Pin, 3/16 x 1-1/2" Roll	2
12	B-131	Bolt, 5/16-18 x 1" HHCS Gr. 5 Zinc	2
13	200323	Rod, Control Pump LH (Incl 15 and 16)	1
14	200324	Rod, Control Pump RH (Incl 15 and 16)	1
15	N-105	Nut, 5/16-24 Hex	2
16	20214	Yoke, 5/16-24 Adjustable	2
17	P-101	Pin, 5/16 x 1" Clevis Zinc	2
18	20224DC	Clip, Hair Pin #13	4
19	20223	Clip, Backing	2
20	20222	Bushing, Nylon	4
21	W-122	Washer, 1/4 Lock	8
22	N-168	Nut, 3/8-24 Whizlock Flange	4
23	K-102	Key, 3/16 x 3/4" Woodruff	1
24	200041DC	Pulley, 4.809 EDB x 3/4" Bore	1
25	W-132	Washer, 3/4 Belleville	1
26	N-114	Nut, 3/4-16 Jam Gr. 2 Clear Zinc	1
27	W-167	Washer, 3/4 x 1-1/4 x .085 Flat	1

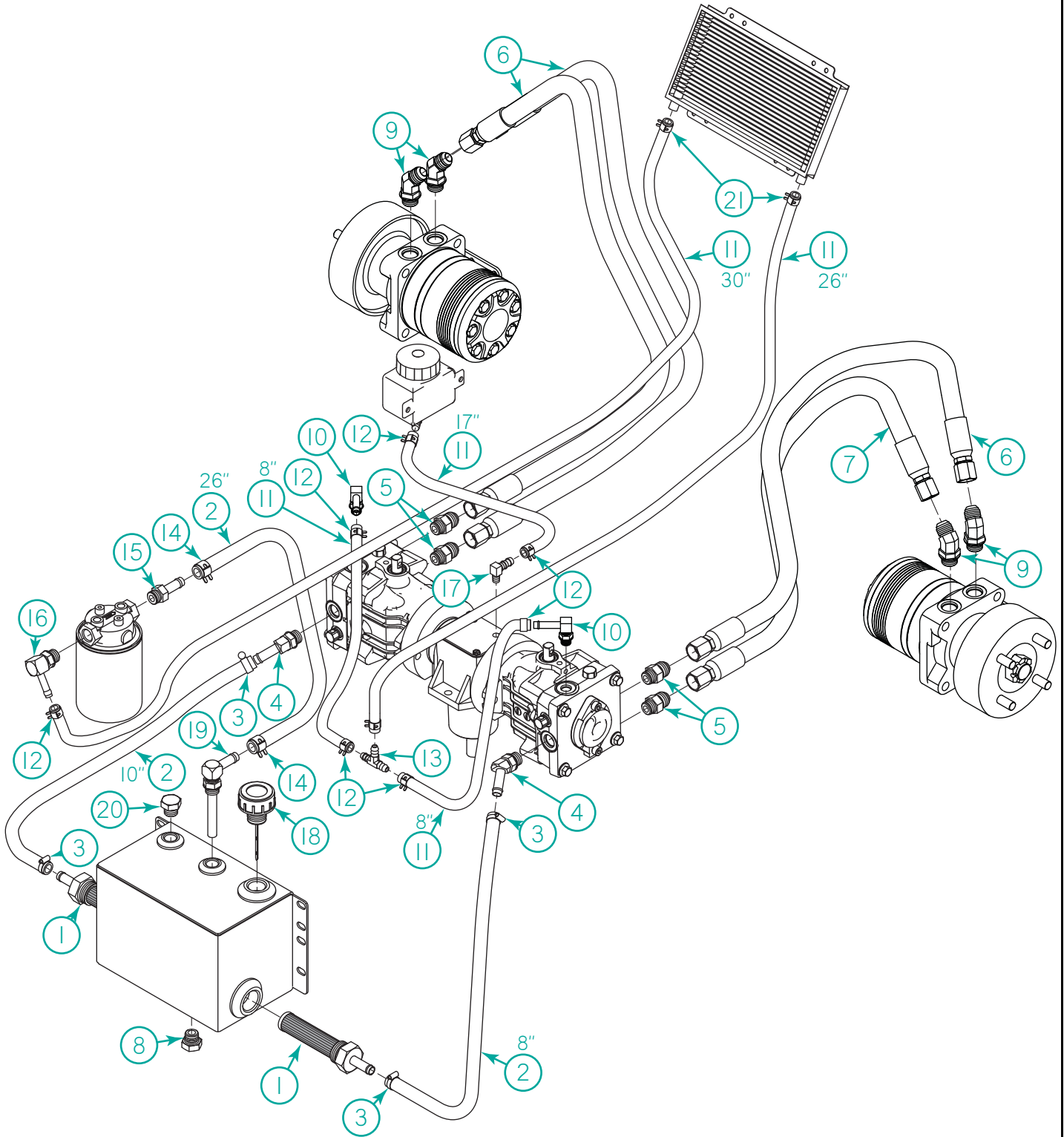
Transmission Pumps (72" Decks)



Transmission Pumps (72" Decks)

Item	Part No.	Description	Qty.
1	200107	Kit, Gear Box	1
1A	792026	Screw, Gear Box	8
1B	788030B	Gasket, T-Box	2
1C	788101	Gasket, Gear Box Cover	1
1D	772150	Cover, Gear Box	1
1E	792025	Screw, #10-24 x 1/2"	4
2	B-109	Bolt, 3/8-16 x 1-1/4" HHCS FT Gr. 5 Clear Zinc	2
3	N-216	Nut, 3/8-16 Flange Nyloc	2
4	S-133	Stud Assembly (Incl 4A and 4B)	2
4A	S-121	Stud, 1/2-13 x 9"	2
4B	N-185	Nut, 1/2-13 Hex	4
5	72001	Bell Housing, Gear Pump Flange	2
6	72024	O-Ring, 4-1/4"	2
7	200313	Pump, Hydro-Gear 21CC LH	1
8	200312	Pump, Hydro Gear 21CC RH	1
9	200315	Arm, Control Pump LH	1
10	200314	Arm, Control Pump RH	1
11	P-118	Pin, 3/16 x 1-1/2" Roll	2
12	B-131	Bolt, 5/16-18 x 1" HHCS Gr. 5 Zinc	2
13	200323	Rod, Control Pump LH (Incl 15 and 16)	1
14	200324	Rod, Control Pump RH (Incl 15 and 16)	1
15	N-105	Nut, 5/16-24 Hex	2
16	20214	Yoke, 5/16-24 Adjustable	2
17	P-101	Pin, 5/16 x 1" Clevis Zinc	2
18	20224DC	Clip, Hair Pin #13	4
19	20223	Clip, Backing	2
20	20222	Bushing, Nylon	4
21	W-122	Washer, 1/4 Lock	8
22	N-157	Nut, 1/2-13 Whizlock Flange	4
23	K-102	Key, 3/16 x 3/4" Woodruff	1
24	200041DC	Pulley, 4.809 EDB x 3/4" Bore	1
25	W-132	Washer, 3/4 Belleville	1
26	N-114	Nut, 3/4-16 Jam Gr. 2 Clear Zinc	1
27	W-167	Washer, 3/4 x 1-1/4 x .085 Flat	1

Hydraulic Routing (50/60" Deck)



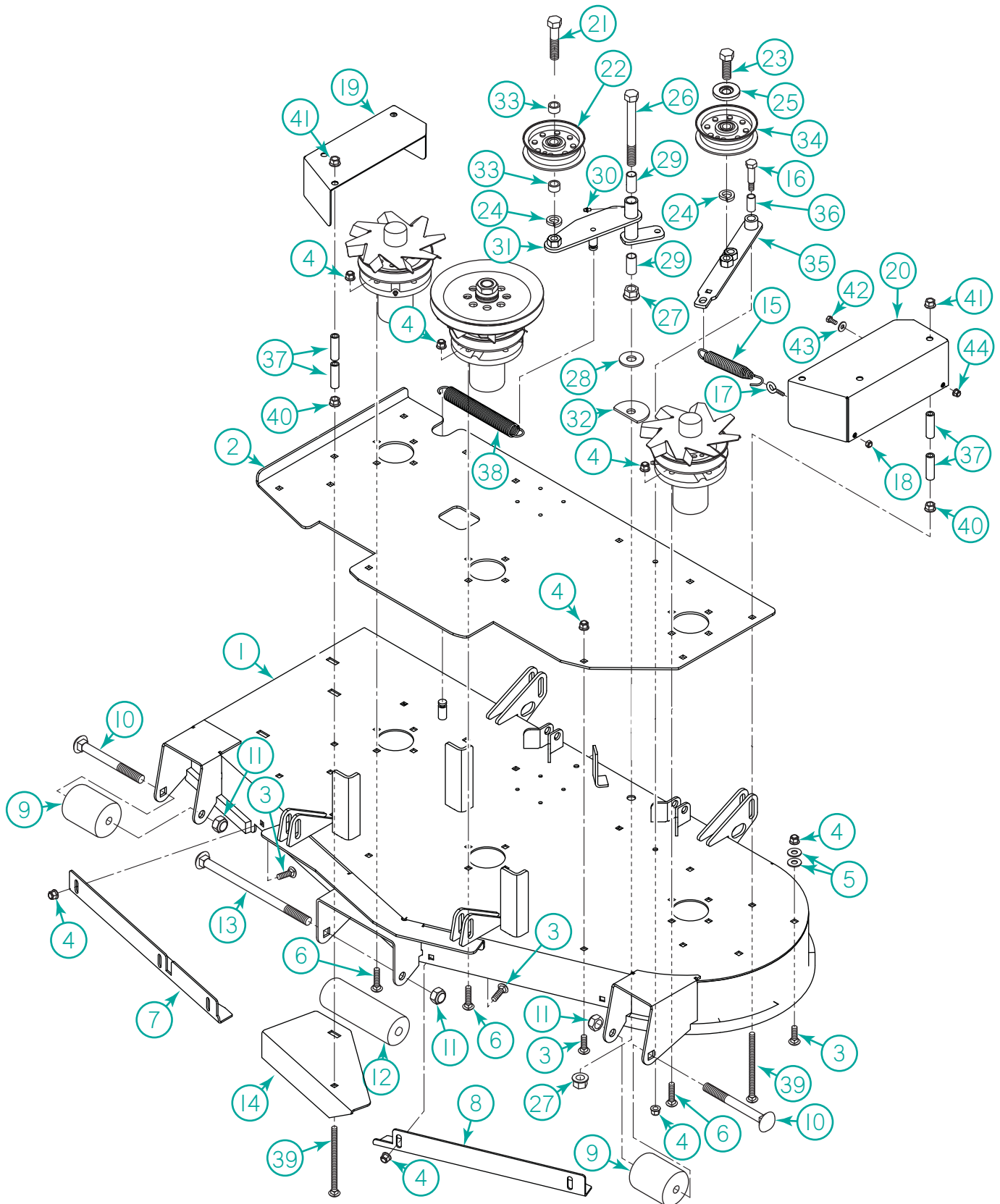
Hydraulic Routing (50/60" Deck)

Item	Part No.	Description	Qty.
1	200366	Fitting, -16 ORB x 1/2" Hose Barb Screen	2
2	200025	Hose, Hydro Black Ext Braid 1/2" ID (One ea: 8", 10", 26")	/in
3	97098DC	Clamp, Worm Gear	4
4	200311	Fitting, -8 ORB x 1/2" Hose Bead 45°	2
5	65004	Fitting, -8 ORB x -10 JIC Straight	4
6	200640DC	Asm, Hydraulic Hose -10 JIC 19"	3
7	200639	Asm, Hydraulic Hose, -10 JIC 14"	1
8	200365	Plug, -8 ORB Magnetic Drain	1
9	200479	Fitting, -10 ORB x -10 JIC 45°	4
10	67015	Fitting, -8 ORB x 3/8" Hose Bead	2
11	60109	Hose, 3/8" ID Black Oil Line (Two 8", One ea: 17", 26", 30")	/in
12	67013	Clamp, Spring 3/8"	10
13	67008	Tee, 3/8" Hose Barb	1
14	C-118	Clamp, Spring 1/2"	2
15	200089	Fitting, -8 ORB x 1/2" Hose Bead	1
16	72071	Fitting, -8 ORB x 3/8" Hose Bead	1
17	68031DC	Fitting, 1/8 NPT x 3/8" Hose Barb	1
18	200888	Breather, Dipstick	1
19	200594	Fitting, -8 ORB x 1/2" Hose Bead 90°	1
20	200747	Plug, -8 ORB Hex	1
21	68231	Clamp, Worm, 0.25 R x 5/16" Wide	2

Hydraulic Routing (72" Deck)

Item	Part No.	Description	Qty.
1	200366	Fitting, -16 ORB x 1/2" Hose Barb Screen	2
2	200025	Hose, Hydro Black Ext Braid 1/2" ID	/in
3	97098DC	Clamp, Worm Gear	4
4	200311	Fitting, -8 ORB x 1/2" Hose Bead 45°	2
5	65004	Fitting, -8 ORB x -10 JIC Straight	4
6	200644	Asm, Hydraulic Hose, -10 JIC 18" Straight/90°	1
7	200664	Asm, Hydraulic Hose, -10 JIC 20" Straight/90°	2
8	200665	Asm, Hydraulic Hose -10 JIC 22" Straight/90°	1
9	87104	Fitting, -10 ORB x -10 JIC Straight	
10	72071	Fitting, -8 ORB x 3/8" Hose Bead	2
11	60109	Hose, 3/8" ID Black Oil Line (One ea: 12", 17", 24", 26", 36", 37")	/in
12	67013	Clamp, Spring 3/8"	10
13	67008	Tee, 3/8" Hose Barb	1
14	C-118	Clamp, Spring 1/2"	2
15	200089	Fitting, -8 ORB x 1/2" Hose Bead	1
16	72021	Fitting, -8 ORB x 3/8" Hose Bead	1
17	68031DC	Fitting, 1/8 NPT x 3/8" Hose Barb	1
18	200888	Breather, Dipstick	1
19	200594	Fitting, -8 ORB x 1/2" Hose Bead 90°	1
20	200747	Plug, -8 ORB Hex	1
21	200365	Plug, -8 ORB Magnetic Drain	1
22	68231	Clamp, Worm .25R x 5/16" Wide	4

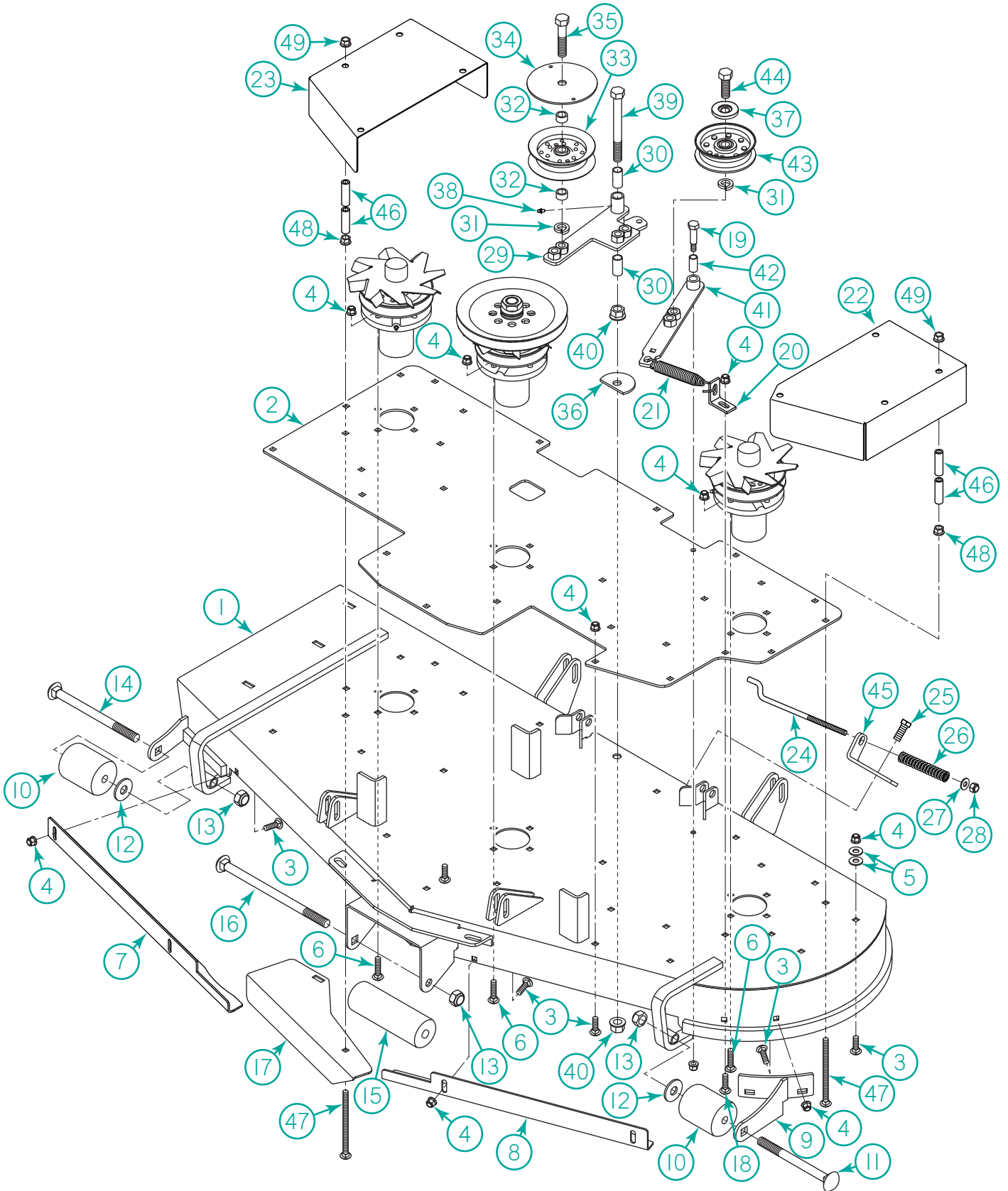
50" Deck



50" Deck

Item	Part No.	Description	Qty.
1	301863	Weld, Deck 50" Black	1
2	100868	Plate, Top 50" Black	1
3	B-135	Bolt, 3/8-16 x 1" Carriage FT Gr. 5 Clear Zinc	15
4	N-216	Nut, 3/8-16 Flange Nyloc	33
5	W-104	Washer, 3/8 Flat	4
6	B-190	Bolt, 3/8-16 x 1-1/3" Carriage FT Gr. 5 Clear Zinc	12
7	300386	Baffle, Bolt-On Deck RH	1
8	300387	Baffle, Bolt-On Deck LH	1
9	67240	Roller, 3-3/4" Nylon Deck	1
10	B-278	Bolt, 5/8-11 x 5" Carriage PT Gr. 5 Clear Zinc	2
11	N-156	Nut, 5/8-11 Nyloc Jam Gr. A Clear Zinc	3
12	30240-0	Roller, 7-1/2" Nylon Deck	1
13	B-255	Bolt, 5/8-11 x 9" Carriage PT Gr. 5 Clear Zinc	1
14	300385	Baffle, Deck Wiper	1
15	300324	Spring, Extension Swivel Hook 18.25 lb.	1
16	B-118	Bolt, 1/2 x 1-1/2 x 3/8-16 x 5/8" HHCS Shoulder	1
17	B-296	Bolt, 1/4-20 x 1" Eye	1
18	N-176	Nut, 1/4-20 Nyloc Gr. A Clear Zinc	1
19	302606	Pulley Guard - 50" RH Black with No-Step Decal	1
20	302611	Pulley Guard - 50" LH Black with No-Step Decal	1
21	B-275	Bolt, 5/8-11 x 2" HHCS PT Gr. 5 Clear Zinc	1
22	300633	Pulley, Flat Idler 3.5"	1
23	B-264	Bolt, 5/8-11 x 1-1/2" HHCS FT Gr. 5 Clear Zinc	1
24	W-111	Washer, 5/8 Lock	1
25	902970	Dust Shield, .655 ID x 2.00 OD	1
26	B-306	Bolt, 5/8-11 x 5-1/2" HHCS PT Gr. 5 Clear Zinc	1
27	N-195	Nut, 5/8-11 Whizlock Flange	2
28	W-135	Washer, 5/8 Flat	1
29	30206DC	Bushing, 5/8 x 3/4 x 1-1/2" Bronze	2
30	F-102	Fitting, 1/4-28 Grease Fitting	1
31	DC4D0004	Weld, Engine Deck Idler	1
32	300471	Shim, Deck Idler	1
33	65278	Bushing, Brake Spacer 1/2 Long	2
34	30224DC	Pulley, 4-3/4" Flat Idler	1
35	02114-01	Weldment, Deck Idler Arm	1
36	65276	Bushing, 1/2 x 5/8 x 1-1/4" Bronze	1
37	302604	Tube-0.625" OD X 0.385" ID X 2.106" L, Clear Zinc	12
38	97390	Spring	1
39	B-391	Bolt - 3/8-16X5-1/2" CARR FT Gr.5	6
40	N-108	Nut, 3/8-16 Whiz	6
41	N-241	Nut, 3/8-16 Hex Flange Spiralock Gr.8, Clear Zinc	6
42	B-101	Bolt - 1/4-20 x 1/2" HHCS FT Gr.5	1
43	W-102	Flat Washer, 5/16	1
44	N-219	Nut, 1/4-20 Flange Nyloc Gr. A Clear Zinc	1
45	300393	Brkt, Tension Spring Idler	1
46	300184DC	Rod, Tension Deck Idler	1

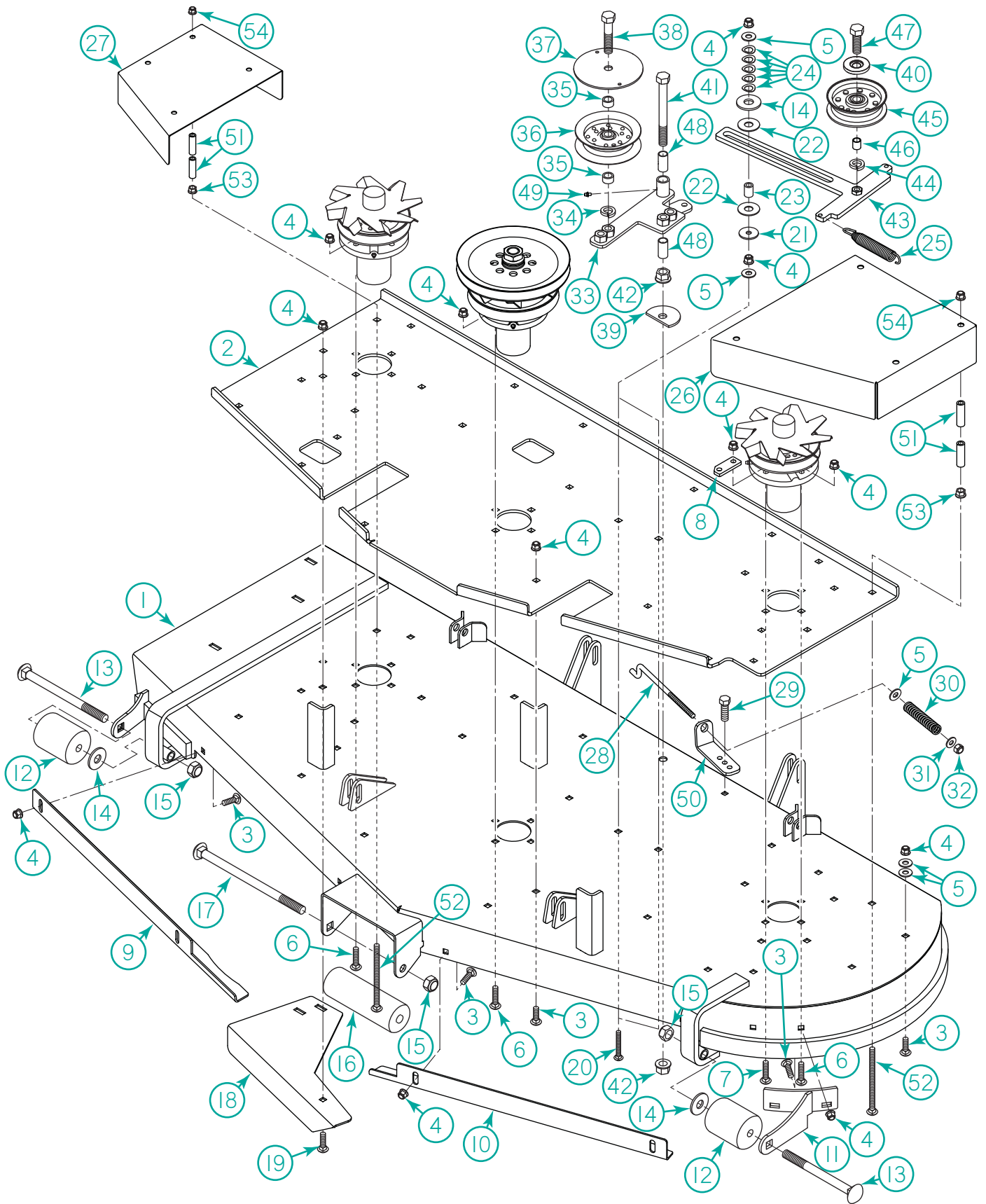
60" Deck



60" Deck

Item	Part No.	Description	Qty.
1	301901	Weld, Deck 60" Black	1
2	301898	Plate, Top 60" Black	1
3	B-135	Bolt, 3/8-16 x 1" Carriage FT Gr. 5 Clear Zinc	23
4	N-216	Nut, 3/8-16 Flange Nyloc	39
5	W-104	Washer, 3/8 Flat	5
6	B-190	Bolt, 3/8-16 x 1-1/2" Carriage FT Gr. 5 Clear Zinc	12
7	300344DC	Baffle, Bolt-On Deck RH	1
8	300345DC	Baffle, Bolt-On Deck LH	1
9	300333	Bracket, Roller Left Deck	1
10	67240	Roller, 3-3/4" Nylon Deck	1
11	B-253	Bolt, 5/8-11 x 6" Carriage PT Gr. 5 Clear Zinc	1
12	W-135	Washer, 5/8 Flat	2
13	N-156	Nut, 5/8-11 Nyloc Jam Gr. A Clear Zinc	3
14	B-254	Bolt, 5/8-11 x 7" Carriage PT Gr. 5 Clear Zinc	1
15	30240-0	Roller, 7-1/2" Nylon Deck	1
16	B-255	Bolt, 5/8-11 x 9" Carriage PT Gr. 5 Clear Zinc	1
17	300332	Baffle, Deck Wiper	1
18	B-136	Bolt, 3/8-16 x 1" Carriage FT Gr. 5 Clear Zinc	2
19	B-118	Bolt, 1/2 x 1-1/2 x 3/8-16 x 5/8" HHCS Shoulder	1
20	65308-L	Tab, Angle	1
21	300324	Spring, Extension Swivel Hook 18.25 lb.	1
22	302613	Pulley Guard - 60" LH Black with No-Step Decal	1
23	302610DC	Pulley Guard - 60" RH Black with No-Step Decal	1
24	300184DC	Rod, Deck Idler Tension	1
25	B-108	Bolt, 3/8-16 x 1" HHCS Gr. 5 Clear Zinc	1
26	97390	Spring, 40 lb.	1
27	W-113	Washer, 5/16 Flat	1
28	N-107	Nut, 3/8-16 Nyloc Gr. A Clear Zinc	1
29	02311-00	Weld, Engine Deck Idler	1
30	30206DC	Bushing, 5/8 x 3/4 x 1-1/2" Bronze	2
31	W-111	Washer, 5/8 Lock	2
32	65278	Bushing, Brake Spacer 1/2 Long	2
33	301564	Pulley, 4.00" Flat Idler	1
34	300531DC	Washer, Safety Pulley Idler	1
35	B-181	Bolt, 5/8-11 x 2-1/2" HHCS PT Gr. 5 Clear Zinc	1
36	300471	Shim, Deck Idler	1
37	902970	Dust Shield, .655 ID x 2.00 IOD	1
38	F-102	Fitting, 1/4-28 Grease Fitting	1
39	B-306	Bolt, 5/8-11 x 5-1/2" HHCS PT Gr. 5 Clear Zinc	1
40	N-195	Nut, 5/8-11 Whizlock Flange	2
41	02114-01	Weldment, Deck Idler Arm	1
42	65276DC	Bushing, 1/2 x 5/8 x 1-1/4" Bronze	1
43	30224DC	Pulley, 4-3/4" Flat Idler	1
44	B-264	Bolt, 5/8-11 x 1-1/2" HHCS FT Gr. 5 Clear Zinc	1
45	300393	Bracket, Tension Spring	1
46	302604	Tube-0.625" OD X 0.385" ID X 2.106" L, Clear Zinc	16
47	B-391	Bolt - 3/8-16X5-1/2" CARR FT Gr.5	8
48	N-108	Nut, 3/8-16 Whiz	8
49	N-241	Nut, 3/8-16 Hex Flange Spiralock Gr.8, Clear Zinc	8

72" Deck

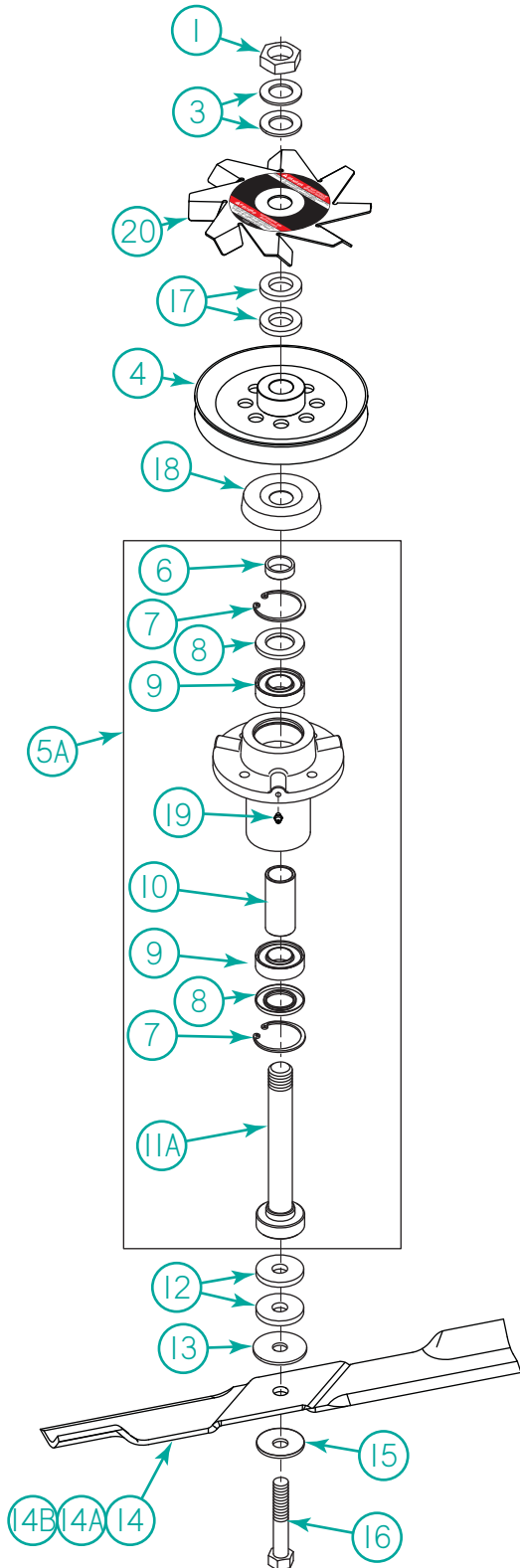


72" Deck

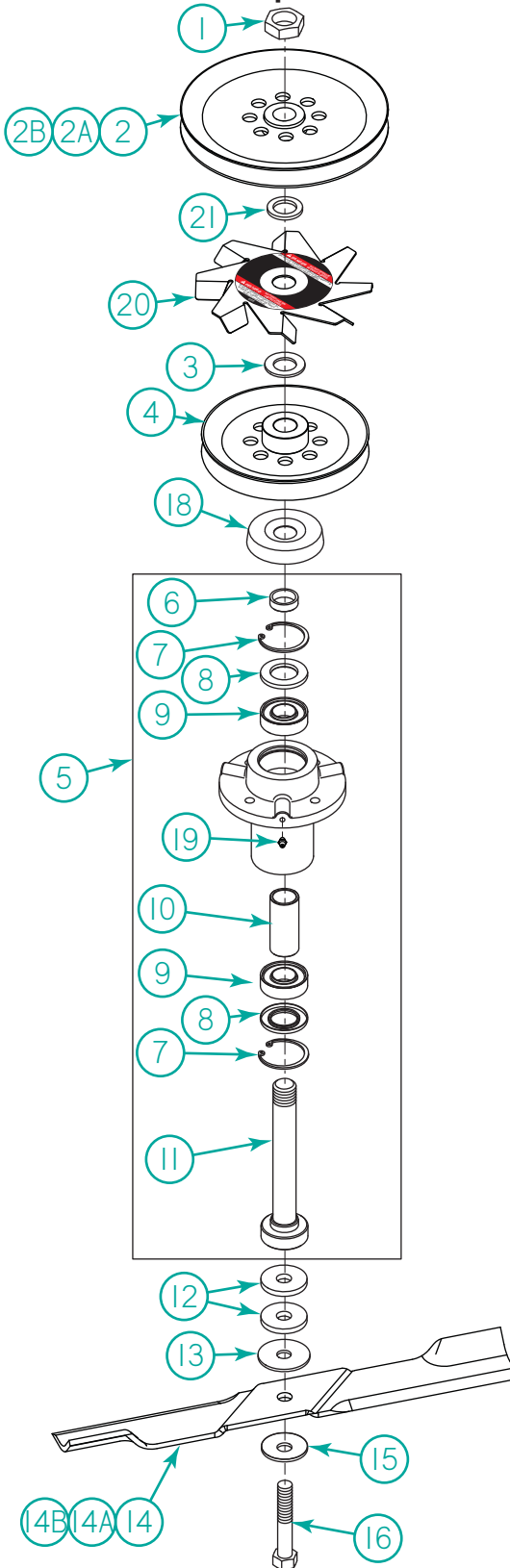
Item	Part No.	Description	Qty.
1	301891	Weld, Deck 72" Black	1
2	301893	Plate, Top 72" Black	1
3	B-135	Bolt, 3/8-16 x 1" Carriage FT Gr. 5 Clear Zinc	30
4	N-216	Nut, 3/8-16 Flange Nyloc	53
5	W-104	Washer, 3/8 Flat	9
6	B-190	Bolt, 3/8-16 x 1-1/2" Carriage FT Gr. 5 Clear Zinc	10
7	B-430	Bolt, 3/8-16 x 1-3/4" Carriage FT Gr. 5 Clear Zinc	2
8	65308	Tab, Spring Casting Connecting	2
9	300358DC	Baffle, Bolt-On Deck RH	1
10	300357DC	Baffle, Bolt-On Deck LH	1
11	300359	Bracket, Roller Left Deck	1
12	67240	Roller, 3-3/4" Nylon Deck	1
13	B-254	Bolt, 5/8-11 x 7" Carriage PT Gr. 5 Clear Zinc	2
14	W-135	Washer, 5/8 Flat	2
15	N-156	Nut, 5/8-11 Nyloc Jam Gr. A Clear Zinc	3
16	30240-0	Roller, 7-1/2" Nylon Deck	1
17	B-255	Bolt, 5/8-11 x 9" Carriage PT Gr. 5 Clear Zinc	1
18	300356DC	Baffle, Deck Wiper	1
19	B-136	Bolt, 3/8-16 x 1-1/4" Carriage FT Gr. 5 Clear Zinc	1
20	B-223	Bolt, 3/8-16 x 2-1/4" Carriage FT Gr. 5 Clear Zinc	2
21	W-106	Washer, 3/8 Thick Fender	2
22	W-140	Washer, 5/8 ID x 1-5/8" OD Nylon	4
23	97139	Bushing, 3/8 x 5/8 x 3/4"	2
24	W-149	Washer, 5/8 Dish Spring	10
25	300324	Spring, Extension Swivel Hook 18.25 lb.	2
26	302615	Pulley Guard - 50" LH Black with No-Step Decal	1
27	302612	Pulley Guard - 50" RH Black with No-Step Decal	1
28	300184DC	Rod, Deck Idler Tension	1
29	B-108	Bolt, 3/8-16 x 1" HHCS Gr. 5 Clear Zinc	1
30	97390	Spring, 40 lb.	1
31	W-113	Washer, 5/16 Flat	1
32	N-107	Nut, 3/8-16 Nyloc Gr. A Clear Zinc	1
33	02311-00	Weld, Engine Deck Idler	1
34	W-111	Washer, 5/8 Lock	2
35	65278	Bushing, Brake Spacer 1/2 Long	2
36	301564	Pulley, 4.00" Flat Idler	1
37	300531DC	Washer, Safety Pulley Idler	1
38	B-181	Bolt, 5/8-11 x 2-1/2" HHCS PT Gr. 5 Clear Zinc	1
39	300471	Shim, Deck Idler	1
40	902970	Dust Shield, .655 ID x 2.00 IOD	1
41	B-306	Bolt, 5/8-11 x 5-1/2" HHCS PT Gr. 5 Clear Zinc	1
42	N-195	Nut, 5/8-11 Whizlock Flange	2
43	68225	Idler, Slide	1
44	W-112	Washer, 1/2" Lock	1
45	30224DC	Pulley, Flat Idler 4-3/4"	1
46	300571	Bushing, 1/2 x 5/8 x 11/16" Pulley	1
47	B-117	Bolt, 1/2-13 x 1-1/4" HHCS FT Gr. 5 Clear Zinc	1
48	30206DC	Bushing, 5/8 x 3/4 x 1-1/2" Bronze	2
49	F-102	Fitting, 1/4-28 Grease Fitting	1
50	300393	Bracket, Tension Spring	1
51	302604	Tube-0.625" OD X 0.385" ID X 2.106" L, Clear Zinc	16
52	B-391	Bolt - 3/8-16X5-1/2" CARR FT Gr.5	8
53	N-108	Nut, 3/8-16 Whiz	8
54	N-241	Nut, 3/8-16 Hex Flange Spirallock Gr.8, Clear Zinc	8

Deck Spindles

Outer Spindles



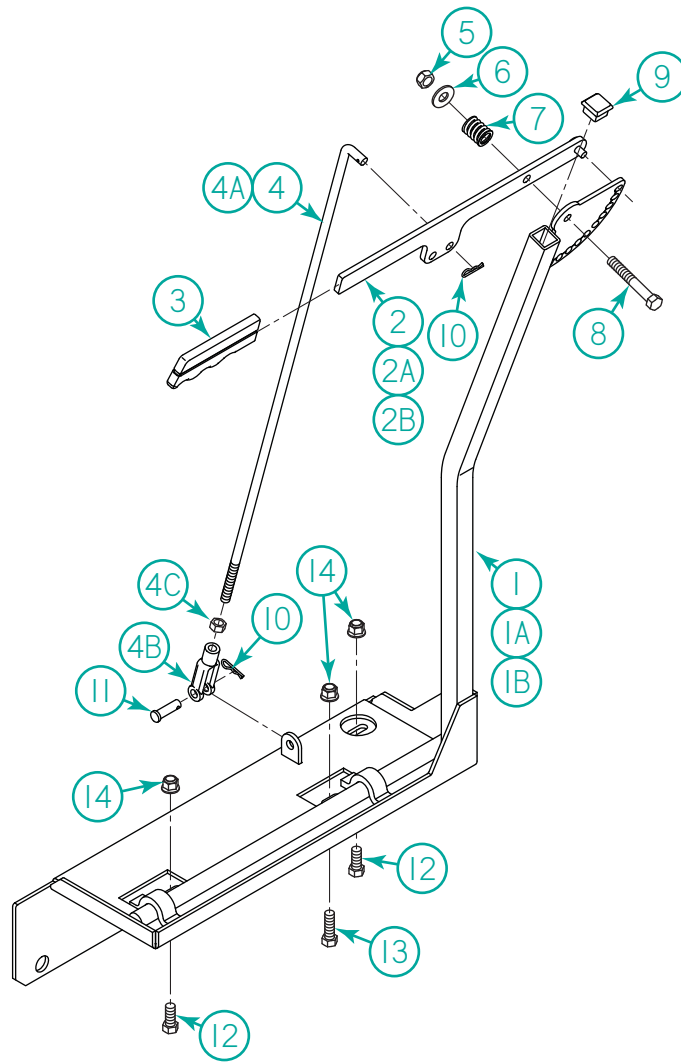
Inner Spindle



Deck Spindles

Item	Part No.	Description	Qty.
1	N-167	Nut, 1-14 Hex Jam	2
2	300470	Pulley, 8.5" x 1.00" Bore (72" Deck)	1
2A	9907750X100S	Pulley, 7.50 x 1.00" Bore (60" Deck)	1
2B	9907600X100S	Pulley, 6" x 1.00" Bore (50" Deck)	1
3	W-137	Washer, 1" ID x 2" OD Belleville	6
4	9907525X100S	Pulley, 5.25 x 1.00" Bore Split (50"/60" Deck)	3
4A	9907675X100S	Pulley, 6.75 x 1.00" Bore Split (72" Deck)	3
5	300442DC	Assembly, Hub Deck Sealed Long (Inner Spindle)	1
5A	300441DC	Assembly, Hub Deck Sealed (Outer Spindle)	2
6	300448	Bushing, Seal Hub Deck	3
7	788080	Ring, Retaining	6
8	300443	Seal, Oil Hub Deck	6
9	30218	Bearing, Hub	6
10	30219	Spacer, Hub Deck	3
11	30217-L	Shaft, Mower Long (Inner Spindle)	1
11A	30217	Shaft, Mower Short (Outer Spindles)	2
12	W-182	Washer, .656 ID x 2 OD x 1/4" Blade Spacer	6
13	W-101	Washer, 5/8" ID x 2-1/4" OD Fiber	3
14	30227-72X	Blade, X Style (72" Deck)	3
14A	30227-60X	Blade, X Style (60" Deck)	3
14B	30227-50X	Blade, X Style (50" Deck)	3
15	W-100	Washer, 5/8 ID x 2" OD Belleville	3
16	B-121-L	Bolt, 5/8-18 x 3" Blade	3
17	W-146	Washer, 1" ID x 1.75" OD x .25"	4
18	301372	Shield, Blade Spindle	3
19	F-102	Fitting, 1/4-28 Grease	3
20	300058	Fan (Includes 800056 Decal)	3
21	W-131	Washer, 1 ID x 1-1/2 OD x 1/8" Thick	1

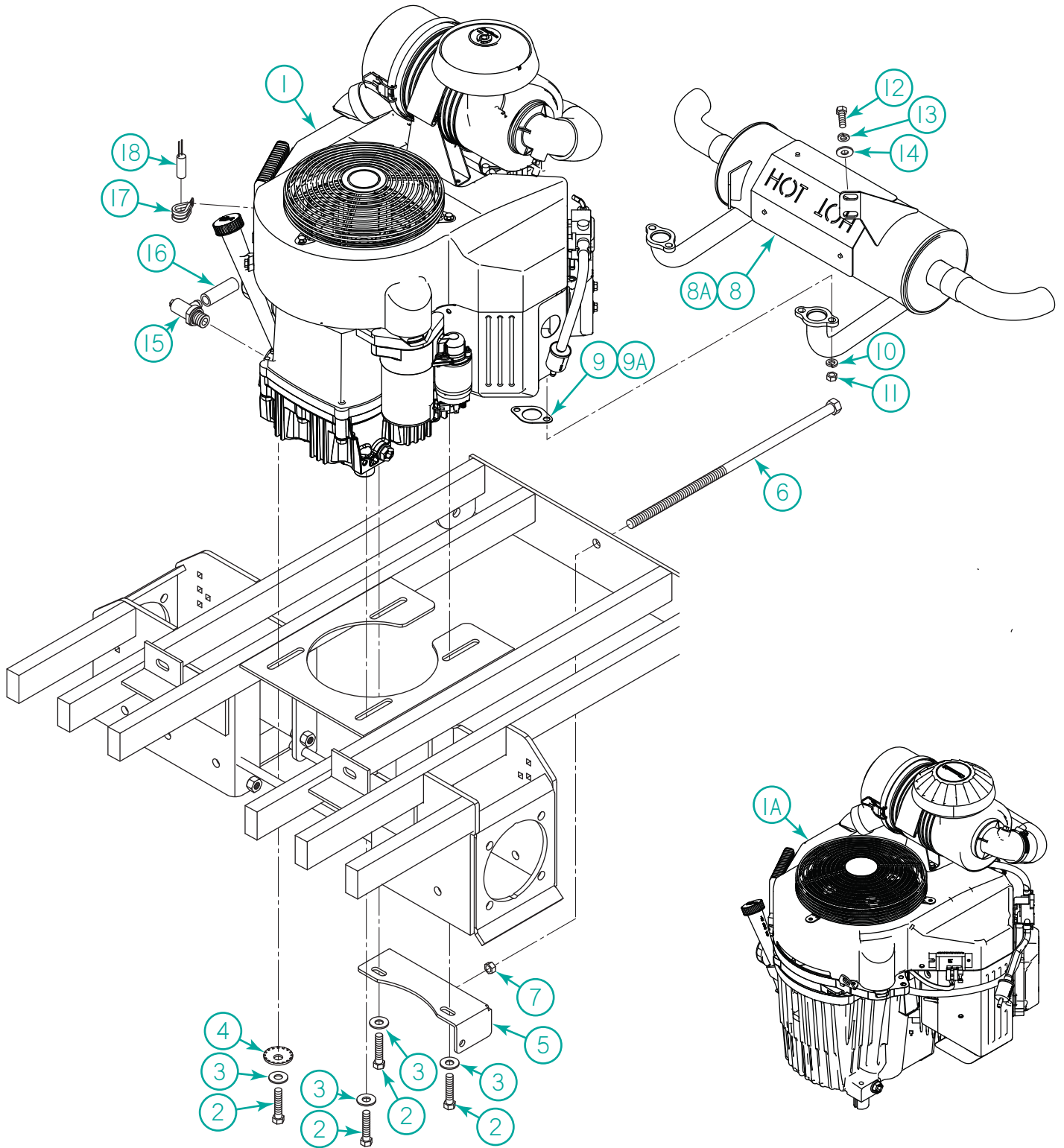
OCDC



OCDC

Item	Part No.	Description	Qty.
1	68122-50	Assembly, 50" OCDC (Incl 1, 2, 3, 4 and 5~11)	1
1A	300350DC	Assembly, 60" OCDC (Incl 1A, 2A, 3, 4A and 5~11)	1
1B	72122	Assembly, 72" OCDC (Incl 1B, 2A, 3, 4B and 5~11)	1
2	900098	Weldment, 50" OCDC Handle	1
2A	900014	Weldment, 60/72" OCDC Handle	1
3	67258	Grip, 1/4 x 1" Black	1
4	97122DC	Assembly, Adjustment Rod 50" (Incl 4B and 4C)	1
4A	68130DC	Assembly, Adjustment Rod 60/72" (Incl 4B and 4C)	1
4B	N-155	Nut, 3/8-24 Yoke	1
4C	N-184	Nut, 3/8-24 HHCS	1
5	N-107	Nut, 3/8-16 Nyloc	1
6	W-104	Washer, 3/8 Flat	1
7	20252DC	Spring	1
8	B-179	Bolt, 3/8-16 x 2-1/2" HHCS PT	1
9	68142	Plug, 1" Square Plug	1
10	20224DC	Clip, Pin Hair #13	2
11	P-102	Pin, 3/8 x 1-1/4" Clevis	1
12	B-135	Bolt, 3/8-16 x 1" HHCS FT Gr. 5	2
13	B-136	Bolt, 3/8-16 x 1-1/4" HHCS FT Gr. 5	1
14	N-216	Nut, 3/8-16 Flange Nyloc	3

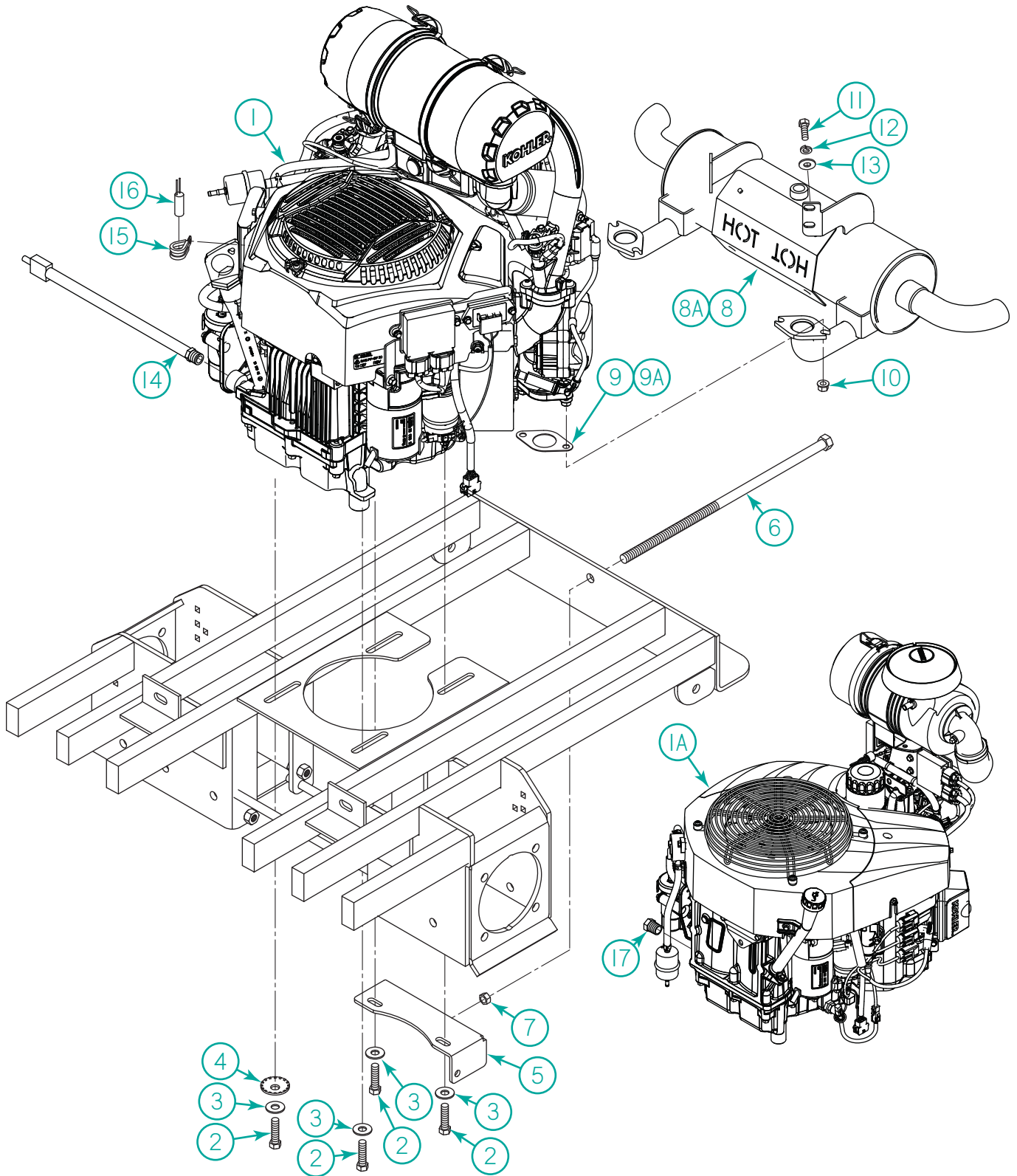
Kawasaki Engine



Kawasaki Engine

Item	Part No.	Description	Qty.
1	600415	Engine, Kawasaki 27 HP FX850V	1
1A	600416DC	Engine, Kawasaki 35 HP FX1000V	1
2	B-436	Bolt, 3/8-16 x 1-1/2" HHCS FT Gr. 5 Clear Zinc	4
3	W-104	Washer, 3/8 Flat	4
4	W-158	Washer, 1/2 ID x 1-5/8" OD Tooth Belleville	1
5	600129	Weldment, Angle Engine Pull Back	1
6	B-354	Bolt, 1/2-13 x 13" HHCS PT Gr. 2 Clear Zinc	1
7	N-110	Nut, 1/2-13 Hex	1
8	600559	Muffler, Kawasaki Dual (27 HP)	1
8A	600558	Muffler, Kawasaki Dual (35 HP)	1
9	902038	Gasket, Muffler (27 HP)	2
9A	902543	Gasket, Muffler (35 HP)	2
10	902547	Washer, 8 mm Spring	4
11	902548	Nut, M8 Hex	4
12	B-220	N-M8-1.25 x 20 HHCS FT Gr. 8.8 Clear Zinc	4
13	W-163	Washer, M8 Lock	4
14	W-161	Washer, M8 Flat	4
15	902018	Valve, Drain Assembly Kawasaki	1
16	600030	Hose, 1/2 ID x 3/4 OD Fuel Line/Inches	1
17	C-112	Clamp, 1/2" Rubber Coated	1
	500128	Harness, Kawasaki Engine Adapter (Not Shown, Incl 18)	1
18	40229	Switch, Tilt (Non Hg)	1

Kohler EFI Engine



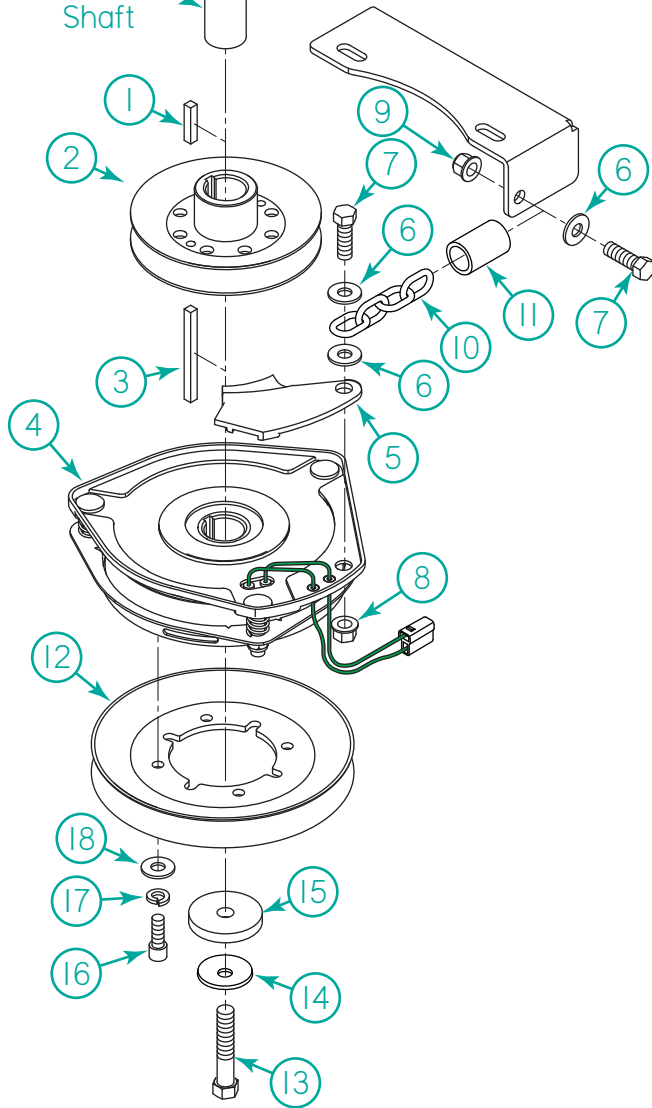
Kohler EFI Engine

Item	Part No.	Description	Qty.
1	600546	Engine, Kohler 33 HP EFI Command Pro ECV870	1
1A	600547	Engine, Kohler 35 HP EFI Command Pro ECV940	1
2	B-109	Bolt, 3/8-16 x 1-1/4" HHCS FT Gr. 5 Clear Zinc	4
3	W-104	Washer, 3/8 Flat	4
4	W-158	Washer, 1/2 ID x 1-5/8" OD Tooth Belleville	1
5	600129	Weldment, Angle Engine Pull Back	1
6	B-279	Bolt, 1/2-13 x 12" HHCS PT Gr. 2 Clear Zinc	1
7	N-110	Nut, 1/2-13 Hex	1
8	600554	Muffler, Kohler 824cc EFI Dual (33 HP Engine)	1
8A	600553	Muffler, Kohler 999cc EFI Dual (35 HP Engine)	1
9	902949	Gasket, Muffler (33 HP Engine)	2
9A	902950	Gasket, 999cc Muffler (35 HP Engine)	2
10	901277	Nut, M8-1.25 Hex Flange	4
11	B-220	Screw, M8-1.25 x 20 HHCS FT Gr. 8.8 Clear Zinc (33 HP Engine Only)	4
12	W-163	Washer, M8 Lock (33 HP Engine Only)	4
13	W-161	Washer, M8 Flat (33 HP Engine Only)	4
14	600436	Hose, Oil Pan Drain w/ E-Z Valve	1
15	C-112	Clamp, 1/2" Rubber Coated	1
	500159	Harness, Kohler EFI Engine Adapter (Not Shown, Incl 16)	1
16	40229	Switch, Tilt (Non Hg)	1
17	200269	Fitting, 1/2" MPT x 3/8" FPT (35 HP Engine Only)	1

Clutch Stack

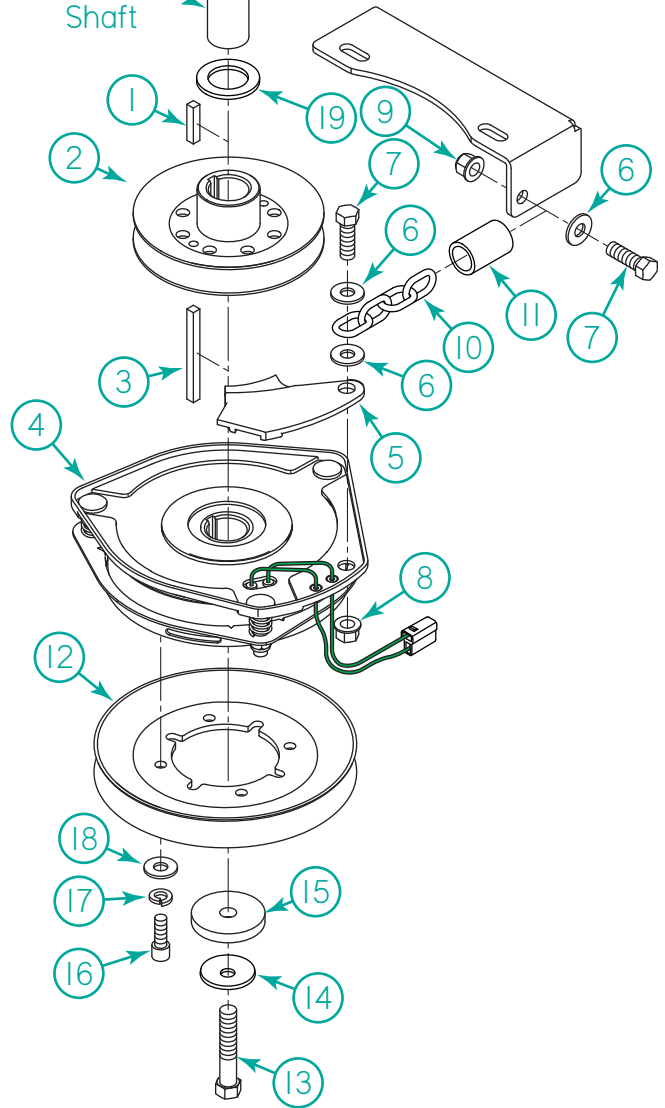
All Engines Except 35 HP Kohler

Engine Shaft



35 HP Kohler Engine

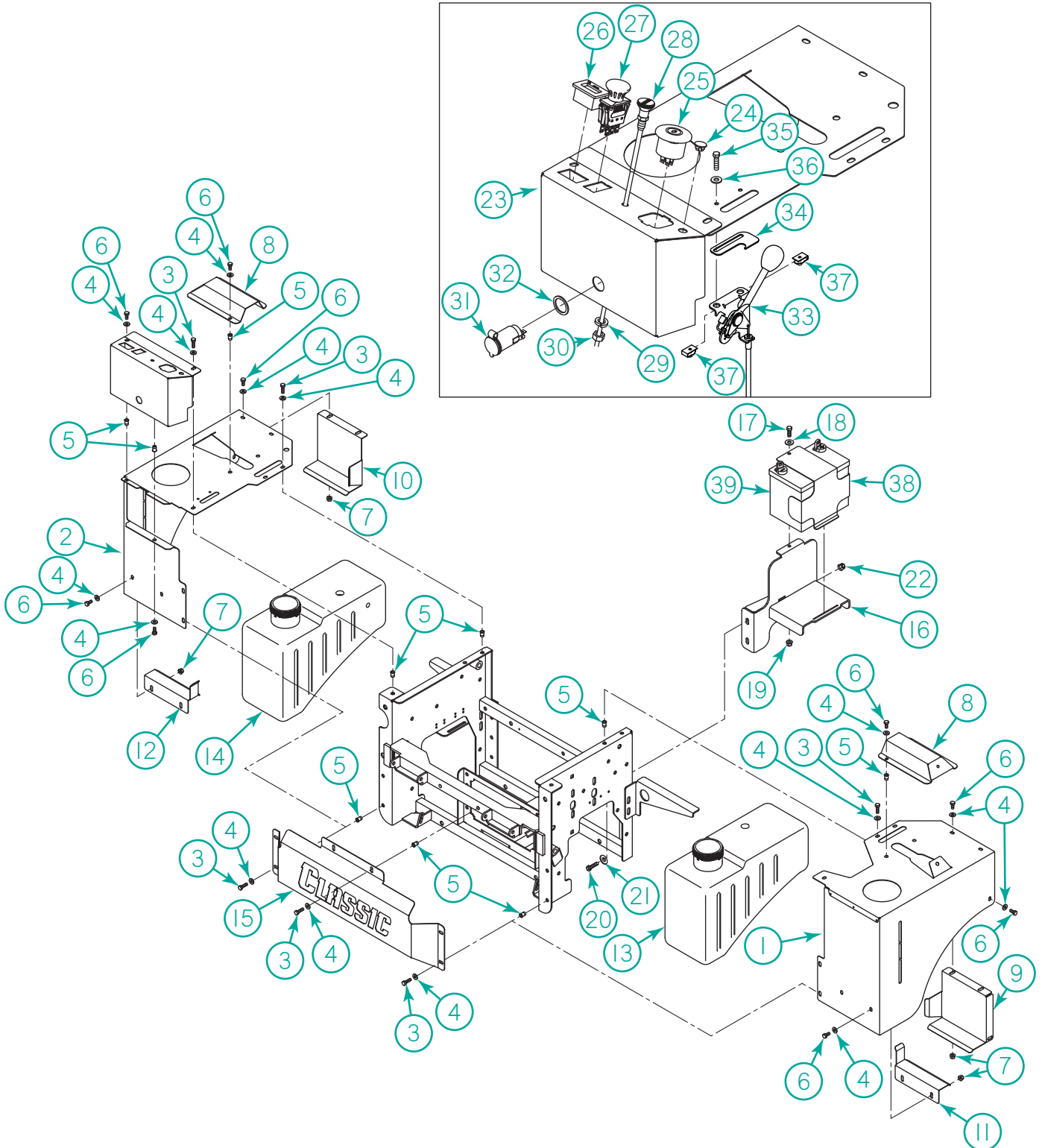
Engine Shaft



Clutch Stack

Item	Part No.	Description	Qty.
1	K-103	Key, 1/4 x 1" Square	1
2	200911	Pulley, 4.867 EDB x 1-1/8" Bore	1
3	K-100	Key Stock, 1/4 x 2-1/2"	1
4	500095	Clutch, Ogura GT3.5-DC01	1
5	500117DC	Cover, Ogura Clutch Wire	1
6	W-113	Washer, 5/16 Flat	3
7	B-108	Bolt, 3/8-16 x 1" HHCS FT Gr. 5, Clear Zinc	2
8	N-108	Nut, 3/8-16 Whizlock Flange	1
9	N-216	Nut, 3/8-16 Flange Nyloc Gr. A Clear Zinc	1
10	500118DC	Chain, Passing 2/0 4 Link Plated	1
11	600379	Hose, Clear 3/4" ID x 1" OD	/IN
12	600361	Pulley, 6.75" Ogura Clutch	1
13	B-273	Bolt, 7/16-20 x 2-1/2" HHCS PT Gr. 8 Yellow Zinc	1
14	W-144	Washer, 7/16 SS Belleville	1
15	600422DC	Spacer, .460 ID x 2.00 OD x .25 Th	1
16	B-221	Bolt, M8-1.25 x 20 mm SHCS Gr. 12.9 No Plating	4
17	W-163	Washer, M8 Lock	4
18	W-161	Washer, M8 Flat	4
19	W-145	Washer, 1-1/8 x 1-3/4" Flat (35 HP Kohler Engine Only)	1

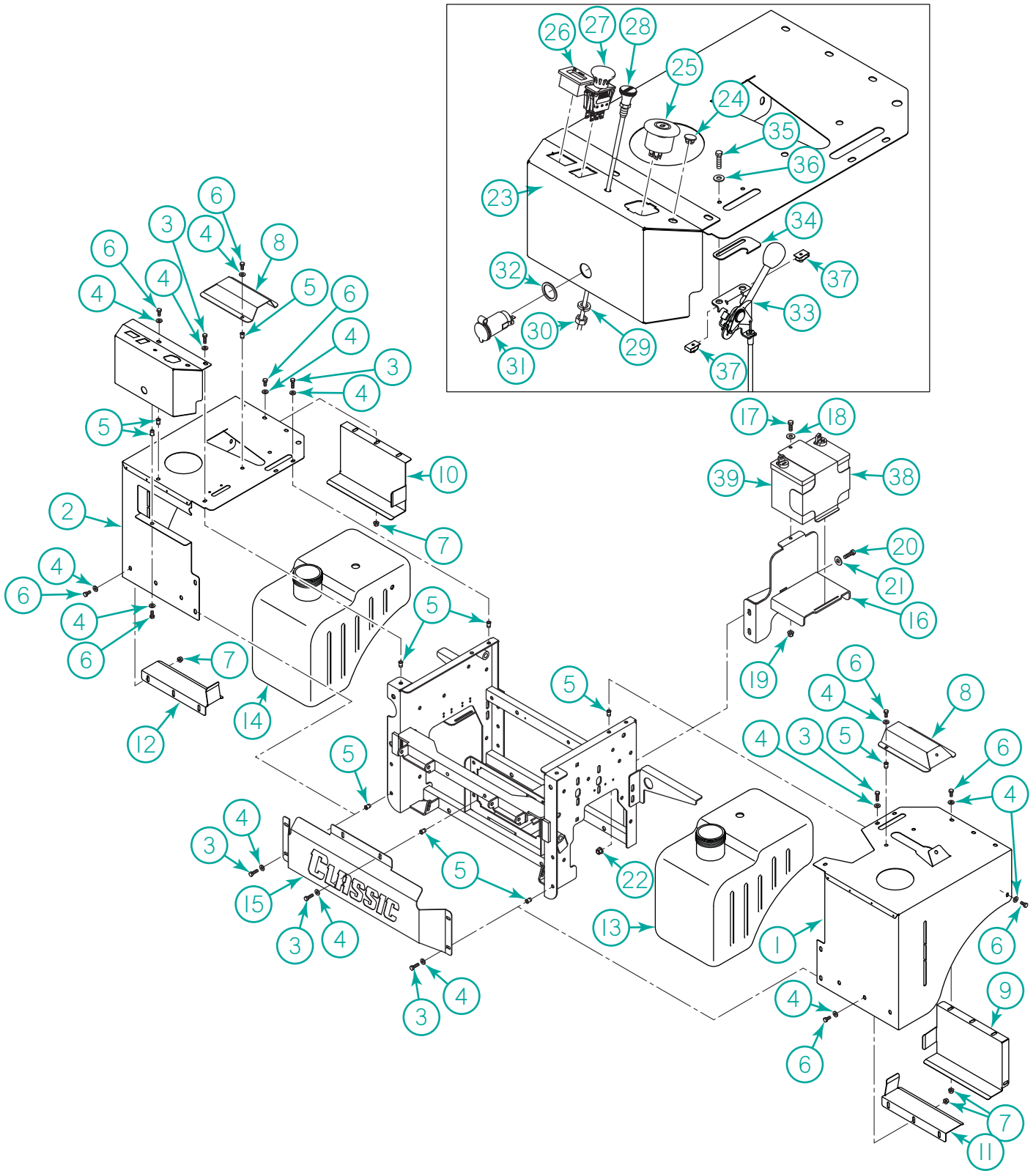
50/60 in. Fenders



50/60 in. Fenders

Item	Part No.	Description	Qty.
1	401785	Fender, Left Side 4 Gal. Tank	1
2	401786	Fender, Right Side 4 Gal. Tank	1
3	B-209	Bolt, 1/4-20 x 3/4" SS HHCS	12
4	W-153	Washer, 1/4 SS Flat	30
5	N-152S	Nutsert, 1/4-20 Flange (.027-165)	19
6	B-103	Bolt, 1/4-20 x 1/2" HHCS Stainless	18
7	N-101	Nut, 1/4-20 SS Whizlock Flange	8
8	401837	Bracket, Remote Vent Cover	2
9	400471	Bracket, Left Rear 4 Gal. Tank	1
10	400470	Bracket, Right Rear 4 Gal. Tank	1
11	400469	Bracket, Left Front 4 Gal. Tank	1
12	400468	Bracket, Right Front 4 Gal. Tank	1
13	401809	Assm, Left Side 4 Gal. Fuel Tank	1
14	401122DC	Assm, Right Side 4 Gal. Fuel Tank	1
15	402008	Panel, Classic Front	1
16	401791	Weld, Battery Holder Black	1
17	B-107	Bolt, 5/16-18 x 3/4" HHCS FT Gr. 5 Clear Zinc	1
18	W-113	Washer, 5/16 Flat	1
19	N-217	Nut, 5/16-18 Flange Nyloc Gr. A Clear Zinc	1
20	B-108	Bolt, 3/8-16 x 1" HHCS FT Gr. 5 Clear Zinc	2
21	W-104	Washer, 3/8 Flat	2
22	N-216	Nut, 3/8-16 Flange Nyloc Gr. A Clear Zinc	2
23	401794	Bracket, Gauge Panel 4 Gal. Tank	1
24	400266DC	Plug, Snap-In Plastic Black 1/2"	1
25	500017	Switch, Ignition	1
26	500193	Meter, Hour/Tach/Volt Non-EFI	1
26A	500195	Meter, Hour/Tach/Volt EFI	1
27	676997	Switch, PTO	1
28	600072	Cable, 63" Choke (Incl. 29-30) (Non-EFI Engine)	1
28A	400227DC	Plug, Panel (EFI Engines)	1
29	W-105	Washer, 3/8 Lock	1
30	N-184	Nut, 3/8-24 HHCS Gr. 2 Clear Zinc	1
31	500053DC	Plug, Accessory	1
32	400291	Washer, Receptacle	1
33	401590	Assembly, Full Detent Throttle	1
34	401833L	Bracket, Throttle Stop	1
35	B-203	Bolt, #10-24 x 3/4" HHCS FT SS	2
36	W-152	Washer, #10 Flat SS	2
37	C-105	Clip, #10-24 Nut	2
38	401792	Bracket, Battery Tie Down	1
39	500194	Battery, Small 350 CCA	1
40	500145	Harness-Wiring XC Main Rope (Not Shown)	1
41	500197	Cable - Battery, Negative, 14" (Not Shown)	1
42	500200	Asm - Cable - Battery, Positive, 18", Boot (Not Shown)	1
43	B-102	Bolt, 1/4 - 20 x 3/4 HHCS FT Gr. 5 (Not Shown)	1
44	W-102	Washer, Flat 5/16 Clear Zinc (Not Shown)	1
45	N-102	Nut, 1/4 - 20 Flange Whiz Gr. 5 (Not Shown)	1

72 in. Model Fenders



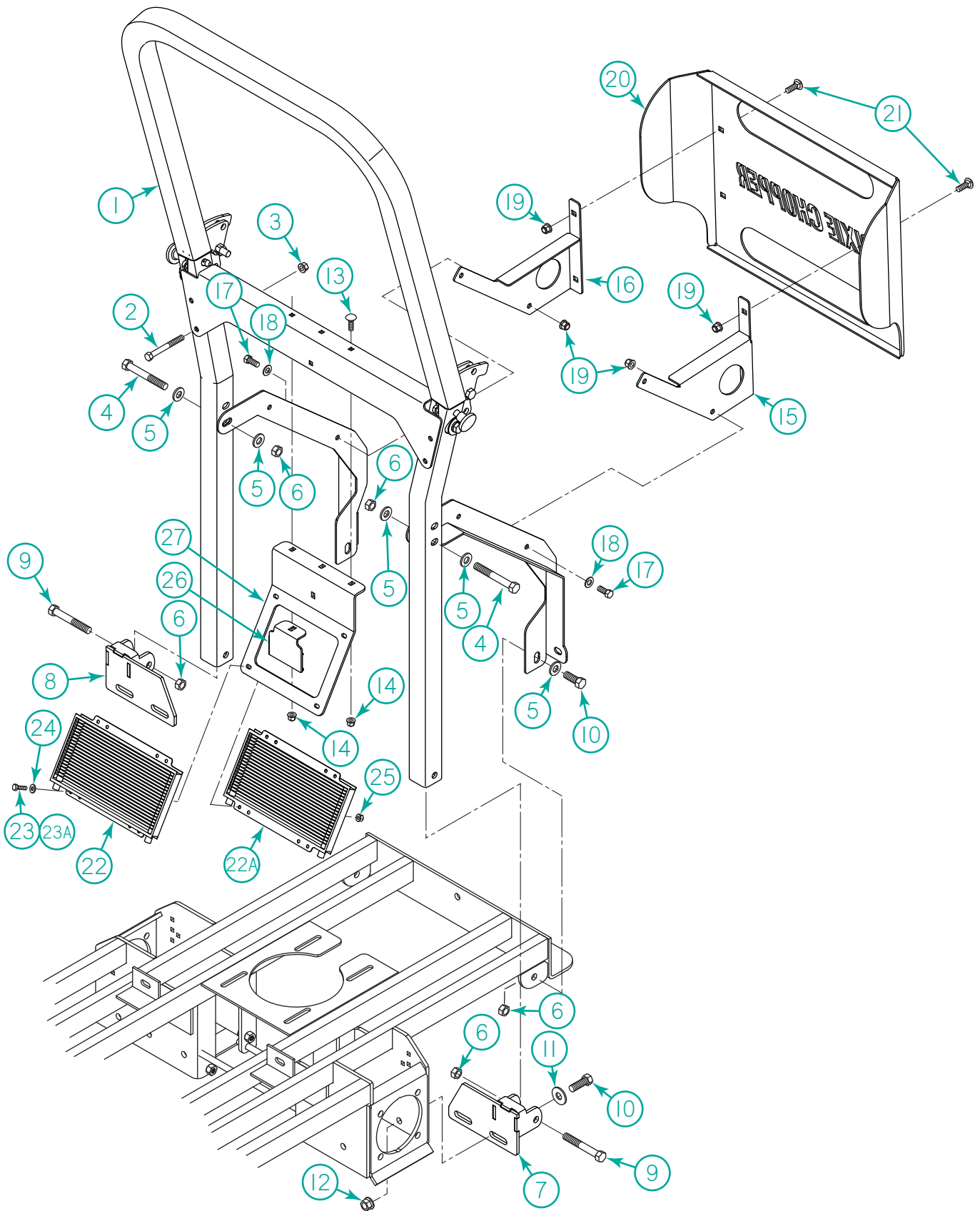
72 in. Model Fenders

Item	Part No.	Description	Qty.
1	401629	Fender, Left Side 7 Gal. Tank	1
2	401630	Fender, Right Side 7 Gal. Tank	1
3	B-209	Bolt, 1/4-20 x 3/4" SS HHCS	14
4	W-153	Washer, 1/4 SS Flat	30
5	N-152S	Nutsert, 1/4-20 Flange (.027-165)	19
6	B-103	Bolt, 1/4-20 x 1/2" HHCS Stainless	20
7	N-101	Nut, 1/4-20 SS Whizlock Flange	10
8	401837	Bracket, Remote Vent Cover	2
9	400505	Bracket, Left Rear 7 Gal. Tank	1
10	400504	Bracket, Right Rear 7 Gal. Tank	1
11	400503	Bracket, Left Front 7 Gal. Tank	1
12	400502DC	Bracket, Right Front 7 Gal. Tank	1
13	401569	Assm, Left Side 7 Gal. Fuel Tank	1
14	401568	Assm, Right Side 7 Gal. Fuel Tank	1
15	402008	Panel, Classic Front	1
16	401791	Weld, Battery Holder Black	1
17	B-107	Bolt, 5/16-18 x 3/4" HHCS FT Gr. 5 Clear Zinc	1
18	W-113	Washer, 5/16 Flat	1
19	N-217	Nut, 5/16-18 Flange Nyloc Gr. A Clear Zinc	1
20	B-108	Bolt, 3/8-16 x 1" HHCS FT Gr. 5 Clear Zinc	2
21	W-104	Washer, 3/8 Flat	2
22	N-216	Nut, 3/8-16 Flange Nyloc Gr. A Clear Zinc	2
23	400577	Bracket, Gauge Panel 7 Gal. Tank	1
24	400266DC	Plug, Snap-In Plastic Black 1/2"	1
25	500017	Switch, Ignition	1
26	500193	Meter, Hour/Tach/Volt Non-EFI	1
26A	500195	Meter, Hour/Tach/Volt EFI	1
27	676997	Switch, PTO	1
28	600072	Cable, 63" Choke (Incl. 29-30) (Non-EFI Engine)	1
28A	400227DC	Plug, Panel (EFI Engine)	1
29	W-105	Washer, 3/8 Lock	1
30	N-184	Nut, 3/8-24 HHCS Gr. 2 Clear Zinc	1
31	500053DC	Plug, Accessory	1
32	400291	Washer, Receptacle	1
33	401590	Assembly, Full Detent Throttle	1
34	401833L	Bracket, Throttle Stop	1
35	B-203	Bolt, #10-24 x 3/4" HHCS FT SS	2
36	W-152	Washer, #10 Flat SS	2
37	C-105	Clip, #10-24 Nut	2
38	401792	Bracket, Battery Tie Down	1
39	500194	Battery, Small 350 CCA	1
40	500145	Harness-Wiring XC Main Rope (Not Shown)	1
41	500197	Cable - Battery, Negative, 14" (Not Shown)	1
42	500200	Asm - Cable - Battery, Positive, 18", Boot (Not Shown)	1

Seat Pan

Item	Part No.	Description	Qty.
1	401962	Seat, SK261 Dixie Chopper (50 and 60" Models)	1
1A	402006	Seat w/ Suspension (72" Model)	1
2	W-118	Washer, 5/16 Fender	4
3	N-103-W	Nut, 5/16-18 Whizlock Flange	4
4	400420	Weld, Seat Pan	1
5	B-229	Bolt, 3/8-16 z 5" HHCS PT	2
6	N-112	Nut, 3/8-16 Nyloc	2
7	900388	Seat Belt (Incl Latching and Retracting Halves)	1
8	B-199	Bolt, 7/16-20 x 2" HHCS PT Gr. 8 Zinc	2
9	N-135	Nut, 7/16-20 Nyloc	2
10	401752	Plate, Center Floor Pan (50 and 60" Models)	1
10A	401798	Plate, Center Floor Pan (72" Models)	1
11	902959	Knob, 1" Round Knurled with 5/16-18 x 7/8" Stud	1
12	N-153	Nutsert, 5/16-18	5
13	401749	Plate, Left Floor Pan (50 and 60" Models)	1
13A	401797	Plate, Left Floor Pan (72" Models)	1
14	401748	Plate, Right Floor Pan (50 and 60" Models)	1
14A	401802	Plate, Right Floor Pan (72" Models)	1
15	B-338	Bolt, 5/16-18 x 1" SHCS Button Flange	4
16	401717L	Plate, Dixie Chopper Cutout	1
17	B-209	Bolt, 1/4-20 x 3/4" SS	4
18	N-219	Nut, 1/4-20 Flange Nyloc Gr. A Clear Zinc	4
19	B-102	Bolt, 1/4-20 x 3/4" HHCS FT Gr. 5 Zinc	4
20	W-102	Washer, 1/4 Flat	4
21	402018DC	Cable, Seat	2
22	N-102	Nut, 1/4-20 Whizlock Flange	4
23	65044	Foam, 1/2 x 3/4"	1
24	W-104	Washer, Flat 0.063" Thk, Clear Zinc	4

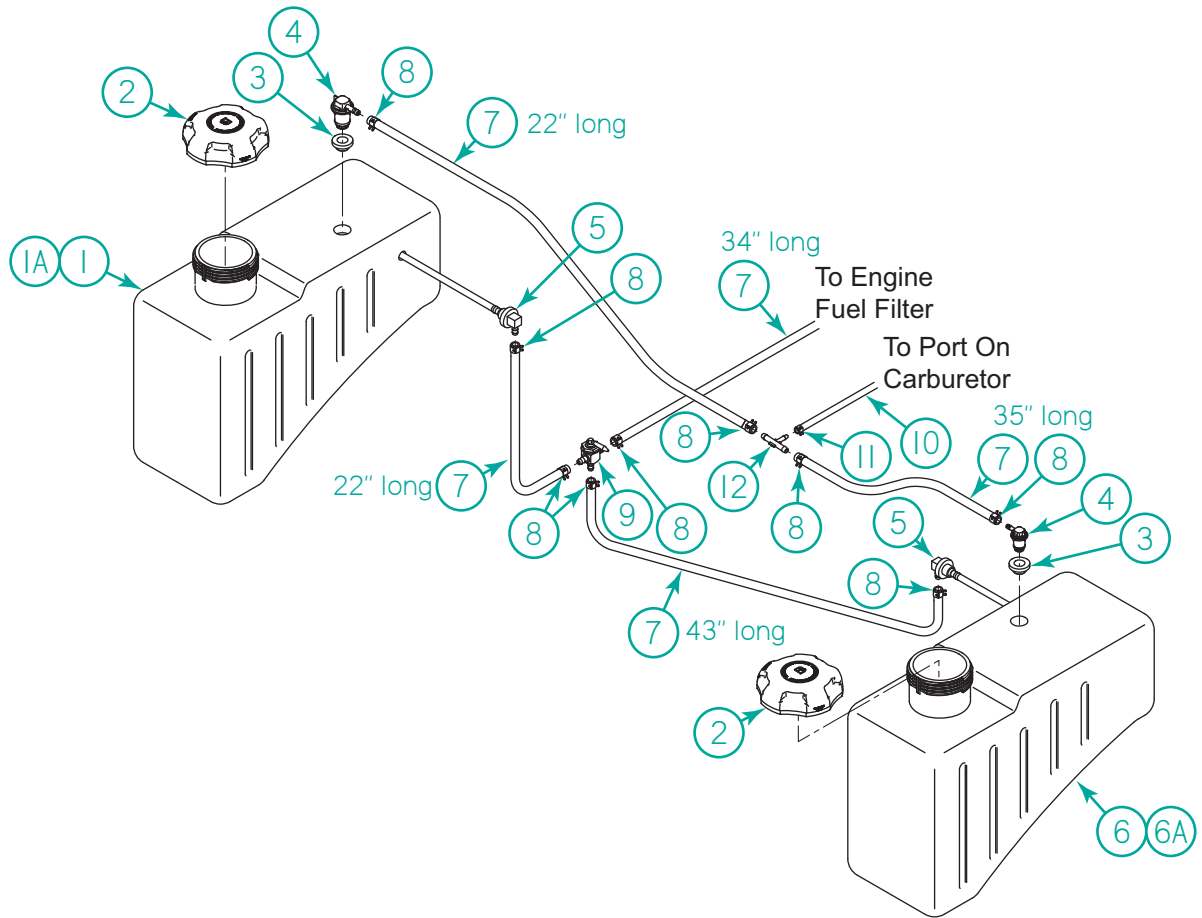
Roll Bar



Roll Bar

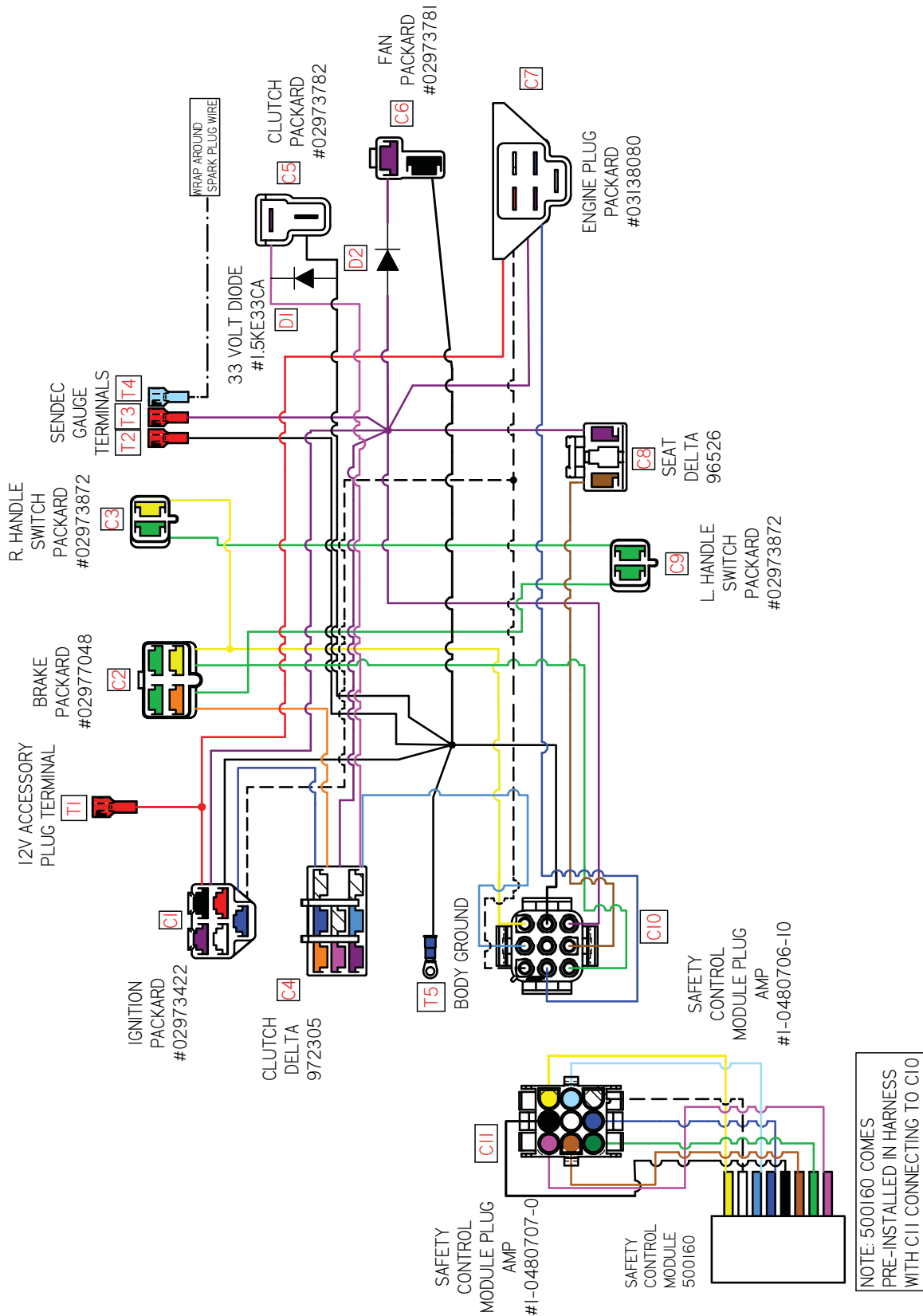
Item	Part No.	Description	Qty.
1	902967	Assembly, Roll Bar	1
2	B-179	Bolt, 3/8-16 x 2-1/2" HHCS PT Gr. 5 Zinc	4
3	N-206	Nut, 3/8-16 Reg Flange Top Zinc	4
4	B-348	Bolt, 1/2-13 x 3-1/4" HHCS PT	2
5	W-197	Washer, 1/2 Flat SAE Zinc	6
6	N-146	Nut, 1/2-13 Stover Lock	5
7	900321	Weld, LH Roll Bar Mounting Bracket	1
8	900320	Weld, RH Roll Bar Mounting Bracket	1
9	B-119	Bolt, 1/2-13 x 3" HHCS PT Gr. 5 Zinc	2
10	B-117	Bolt, 1/2-13 x 1-1/4" HHCS	6
11	W-109	Washer, 1/2 Flat	4
12	N-157	Nut, 1/2-13 Whizlock Flange	4
13	B-104	Bolt, 5/16-18 x 3/4" Gr. 5 Zinc Carriage	4
14	N-217	Nut, 5/16-18 Flange Nyloc Gr. A Clear Zinc	4
15	401111DC	Bracket, LH Crash Guard Mount	1
16	401112DC	Bracket, RH Crash Guard Mount	1
17	B-137	Bolt, 3/8-16 x 3/4" HHCS FT Gr. 5 Zinc	4
18	W-160	Washer, M10 Flat	4
19	N-216	Nut, 3/8-16 Flange Nyloc Gr. A Clear Zinc	8
20	400519	Guard, Bolt On Crash	1
21	B-110	Bolt, 3/8-16 x 3/4" FT Gr. 5 Zinc Carriage	4
22	60103-L	Cooler, Short Oil	1
22A	60103-L	Cooler, Short Oil (72" Models Only)	1
23	B-103	Bolt, 1/4-20 x 1/2" HHCS SS (50/60" Models)	4
23A	B-209	Bolt, 1/4-20 x 3/4" HHCS SS (72" Models)	4
24	W-153	Washer, 1/4 SS Flat	4
25	N-101	Nut, 1/4-20 SS Whizlock Flange	4
26	401998	Bracket, Charcoal Canister	1
27	200889	Bracket, Cooler	1

Fuel System

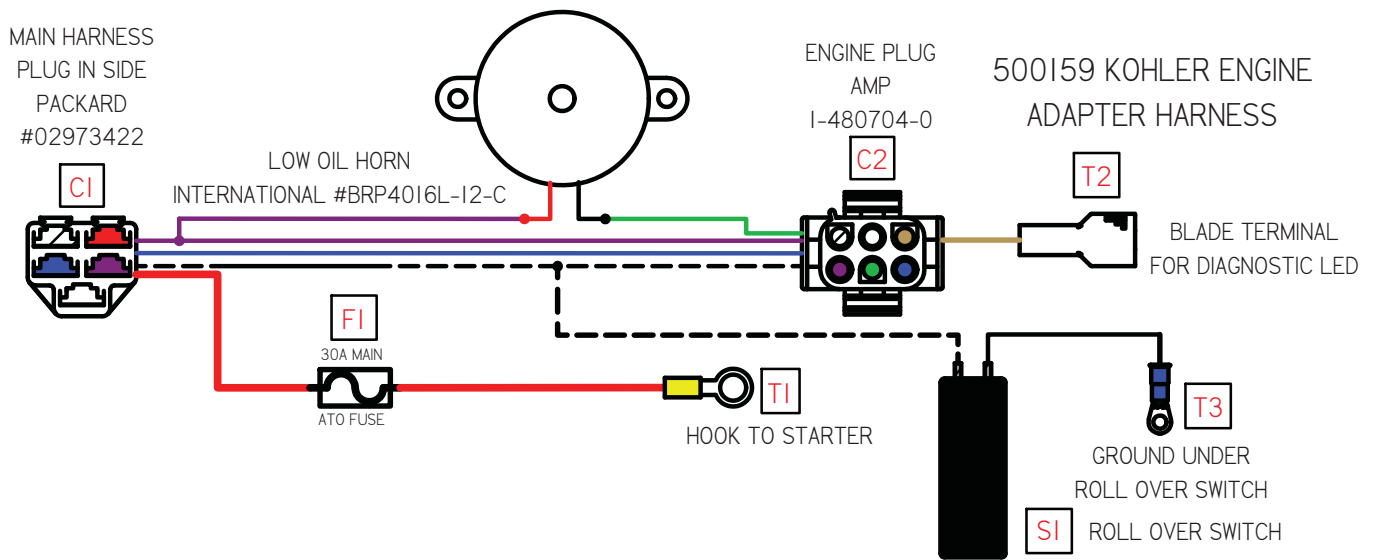
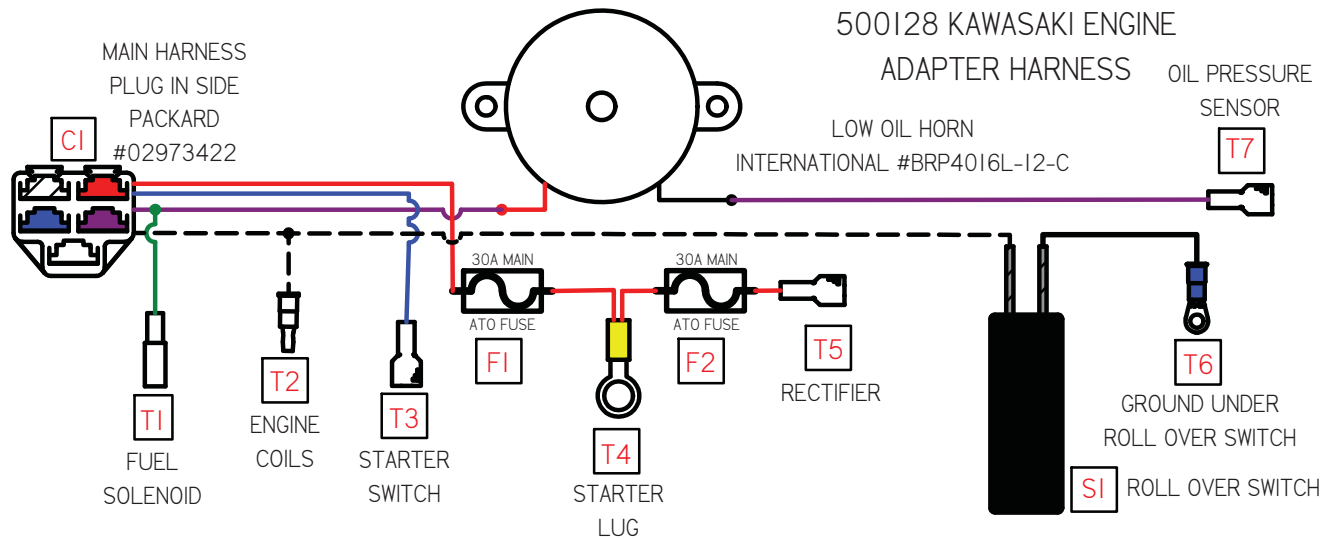


Item	Part No.	Description	Qty.
1	401122	Asm, Fuel Tank RH 4 Gal. (Incl Items 2-5) (50/60" Models)	1
1A	401568	Asm, Fuel Tank RH 7 Gal. (Incl Items 2-5) (72")	1
2	400885	Cap, Fuel Tank, 3.5" Ratchet, 1 Way Check	2
3	600595	Valve, Remote Vent, 1/4" Barb	2
4	600456	Grommet, Rollover Nitrile	2
5	400360	Asm, Tank Adapter 20"	2
6	401809	Asm, Fuel Tank LH 4 Gal. (Incl Items 2-5) (50/60" Models)	1
6A	401569	Asm, Fuel Tank LH 7 Gal. (Incl Items 2-5) (72")	1
7	600398	Hose, Gas Line 1/4" EPA 15 g/m ² /24h	/IN
8	40213	Clamp, 1/4" Hose (Red)	9
9	400358	Valve, Ball Reserve	1
10	600399DC	Hose, Gas Line 3/16" EPA 15g/m ² /24h (30" long)	/IN
11	C-125	Clamp, Spring Hose 3/16	2
12	902982	Fitting, Plastic Tee 1/4 x 1/4 On Run by 3/16	1

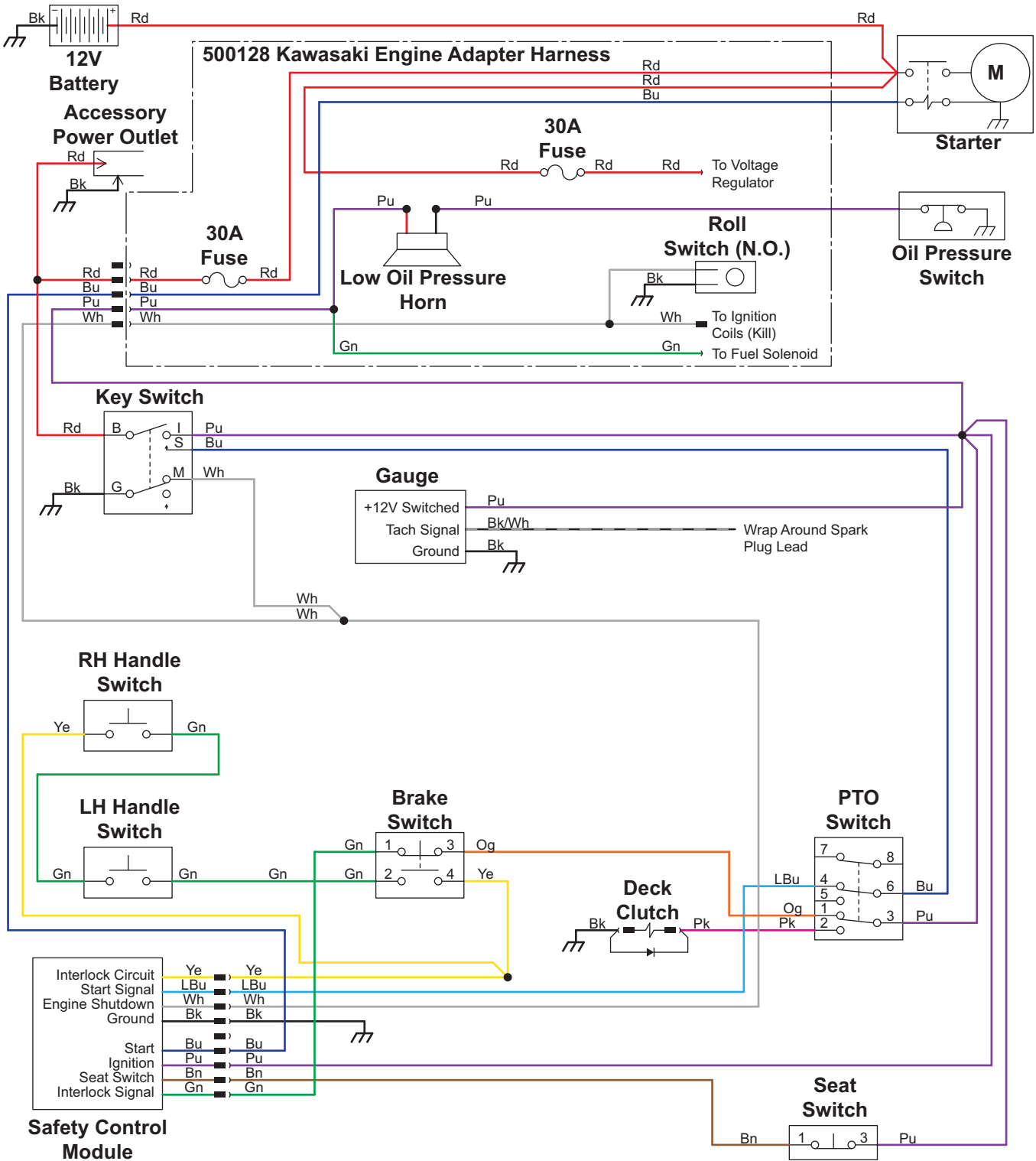
Wiring Diagram (Main)



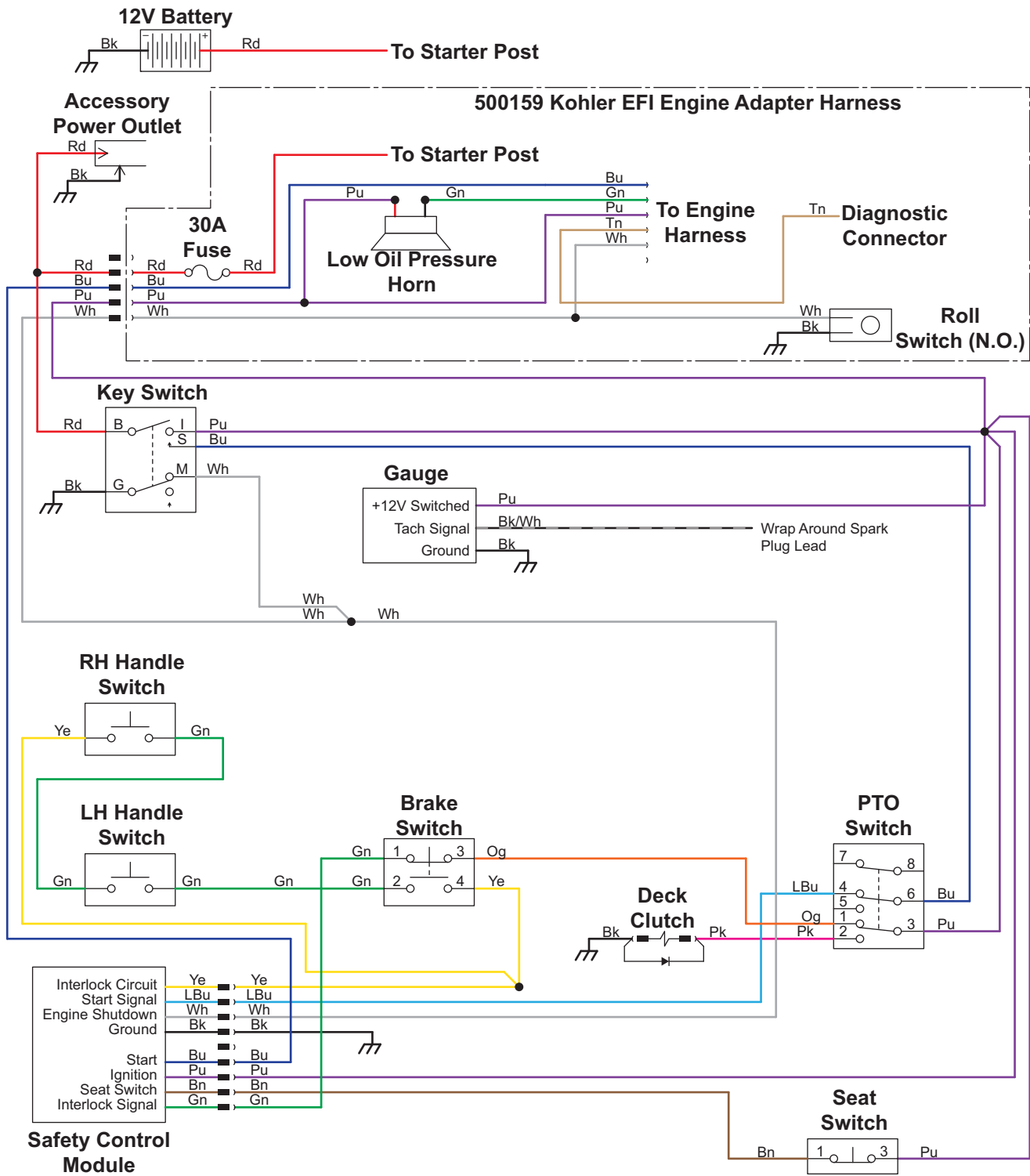
Engine Adapter Harnesses



Electrical Schematic (Kawasaki)



Electrical Schematic (Kohler)



General Bolt Torque Specifications

Bolt Size Inches	Coarse Thread /Inches	SAE 0-1-2 Low Carbon Steel	SAE Grd. 3 Medium Carbon Steel	SAE Grd. 5 Med. Carbon Heat T. Steel	SAE Grd. 6 Med. Carbon Treat Steel	SAE Grd. 7 Med. Carbon Alloy Steel	SAE 0-1-2 Med. Carbon Alloy Steel
1/4	20	6	9	10	12.5	13	14
5/16	18	12	17	19	24	25	29
3/8	16	20	30	33	43	44	47
7/16	14	32	47	54	69	71	78
1/2	13	47	69	78	106	110	119
9/16	12	69	103	114	150	154	169
5/8	11	96	145	154	209	215	230
3/4	10	155	234	257	350	360	380
7/8	9	206	372	382	550	570	600
1	8	310	551	587	825	700	840
1-1/8	7	480	794	872	1304	1325	1430
1-1/8	7	675	1105	1211	1815	1825	1975

To determine the torque for a fine thread bolt, increase the above coarse thread ratings by 9%.



DIXIE CHOPPER
2540 E. County Road 50 S.
Fillmore, Indiana 46128
www.dixiechopper.com

Specifications and instructions subject to change without notice.

Dixie Chopper is a registered trademark of RhinoAg, Inc.
any and all use and/or reproductions are strictly prohibited.

Printed In USA